

ROOM FINISH SCHEDULE

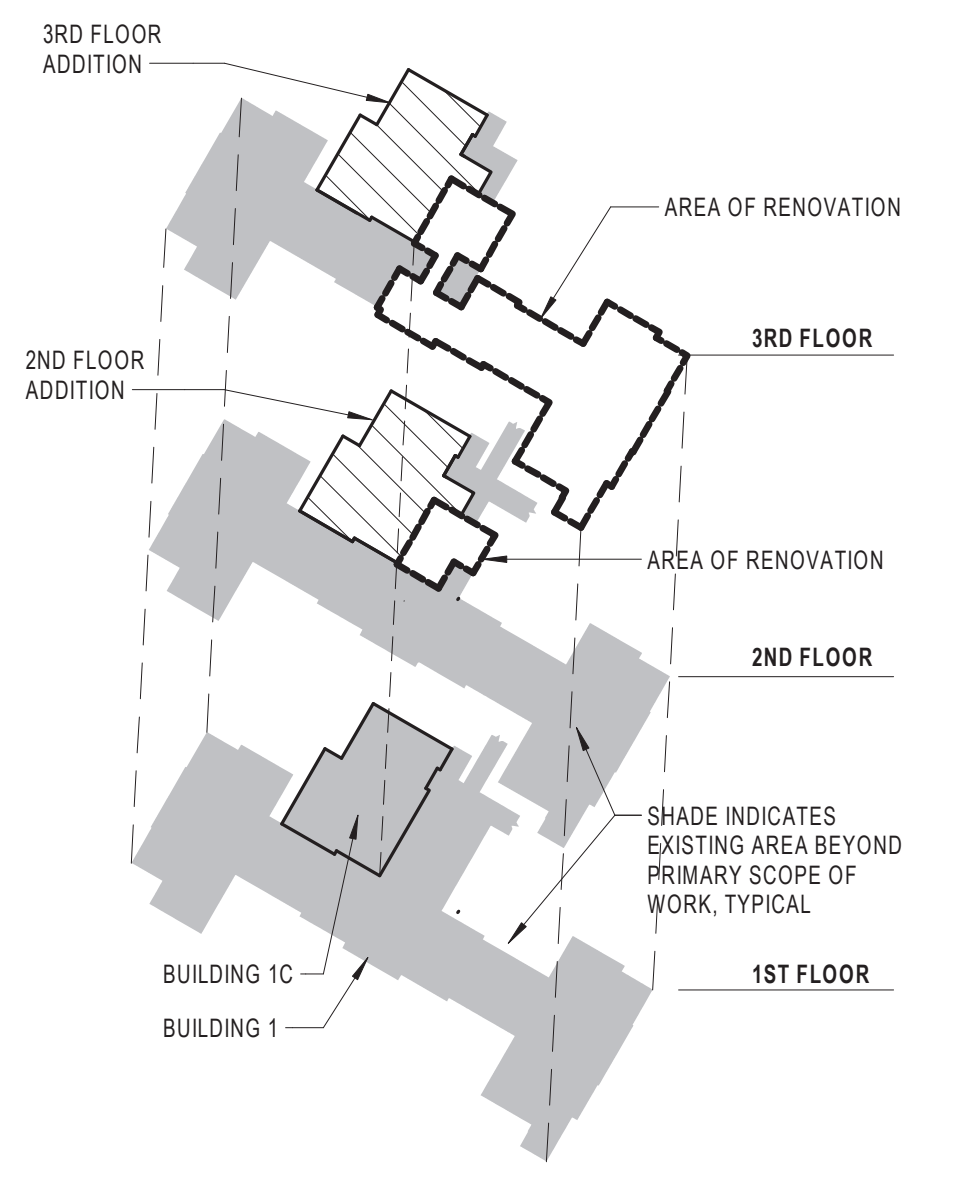
Vv	ROOM NAME	FLOOR	BASE	WALLS				MILLWORK		CEILING		Remarks	COMMENTS
				N	E	S	W	VERT.	HORIZ.	TYPE	COLOR		
2ND FLOOR													
220RR	CORR	WSF-1	RB-1	PT-1	PT-1	PT-1	PT-1			AP1			
228	STAFF LOUNGE (SU001)	WSF-2	RB-1	PT-1	PT-1	PT-1	PT-1			AP1			
228A	LOCKERS (LR001)	WSF-2	RB-1	PT-1	PT-1	PT-1	PT-1			AP1			
228B	STAFF TLT (TNPG1)	T-4	T-1	PT-2A	PT-2A	PT-2A	PT-2A	SS-1 (APRON)	SS-1	GYP	PT-8A		
229	HSKP (JANC1)	WSF-1	RB-1	PT-1A	PT-1A	PT-1A	PT-1A			AP1			
240	FAMILY LOUNGE (WRFO1)	WSF-2	RB-1	PT-1	PT-1	PT-1	PT-1			AP1			
241	PAINTRY (NCWD1)	WSF-1	RB-1	PT-1	PT-1	PT-1	PT-1			AP1			
242	CONSULT (CFCD2)	WSF-2	RB-1	PT-1	PT-1	PT-1	PT-1			AP1			
C2-01	CORR	WSF-1	RB-1	PT-1	PT-1	PT-1	PT-1			AP1			
C2-02	CORR	WSF-1	RB-1	PT-1	PT-1	PT-1	PT-1			AP1			
C2-03	CORR	WSF-1	RB-1	PT-1	PT-1	PT-1	PT-1			AP1			
C201	STORAGE (RSSE1)	WSF-2	RB-1	PT-1, IRWC-1	PT-1, IRWC-1	PT-1, IRWC-1	PT-1, IRWC-1			AP1			
C202	RT SHARED OFFICE (OFA07)	WSF-2	RB-1	PT-1	PT-1	PT-1	PT-1			AP1			
C203	RT OFFICE (OFA09)	WSF-2	RB-1	PT-1	PT-1	PT-1	PT-1			AP1			
C204	MED TEAM 2 (CFR02)	WSF-2	RB-1	PT-1	PT-1	PT-1	PT-1			AP1			
C205	MED TEAM 1 (CFR02)	WSF-2	RB-1	PT-1	PT-1	PT-1	PT-1			AP1			
C206	2ND FLR NURSE MAN. & ASSIST.	WSF-2	RB-1	PT-1	PT-1	PT-1	PT-1			AP1			
C207	ELEC	WSF-2	RB-1	PT-1	PT-1	PT-1	PT-1			AP1			
C208	DATA	WSF-2	RB-1	PT-1	PT-1	PT-1	PT-1			AP1			
C209	RT SOILED	WSF-1	RB-1	PT-1, IRWC-1	PT-1, IRWC-1	PT-1, IRWC-1	PT-1, IRWC-1			AP1			
C210	RT EQUIPMENT STORAGE	WSF-2	RB-1	PT-1, IRWC-7	PT-1, IRWC-7	PT-1, IRWC-7	PT-1, IRWC-7			AP1			
C211	RT CLEAN	WSF-2	RB-1	PT-1, IRWC-1	PT-1, IRWC-1	PT-1, IRWC-1	PT-1, IRWC-1			AP1			
C212	ICU NURSE MGR (OFA09)	WSF-2	RB-1	PT-1	PT-1	PT-1	PT-1			AP1			
C213	OFFICE ICU	WSF-2	RB-1	PT-1	PT-1	PT-1	PT-1			AP1			
C214	DAYURNIST (OFA09)	WSF-2	RB-1	PT-1	PT-1	PT-1	PT-1			AP1			
C215	NOCTURNIST (OFA09)	WSF-2	RB-1	PT-1	PT-1	PT-1	PT-1			AP1			
C215A	TOILET/SHOWER (TNPG1)	T-4	T-1	PT-2A	PT-2A	PT-2A	PT-2A	SS-1 (APRON)	SS-1	GYP	PT-8A		
C216	CLOSET	WSF-2	RB-1	PT-1	PT-1	PT-1	PT-1			AP1			
C217	OAA	WSF-2	RB-1	PT-1	PT-1	PT-1	PT-1			AP1			
C219	CHAPLAIN OFFICE (OFA07)	WSF-2	RB-1	PT-1	PT-1	PT-1	PT-1			AP1			
C219A	STOR												
C220	CHAPEL (RAS01)	WSF-2	RB-1	PT-1	PT-1	PT-1	PT-1			AP1			
3RD FLOOR													
3-1	CORR	WSF-1	RB-1	PT-1, PT-2	PT-1, PT-2	PT-1, PT-2	PT-1, PT-2			AP1, GYP	PT-1	NOT IN SCOPE	
3-2	CORR	WSF-1, WSF-2	RB-1	PT-1, PT-2, IRWC-7	PT-1, PT-2, IRWC-7	PT-1, PT-2, IRWC-7	PT-1, PT-2, IRWC-7			AP1, GYP	PT-1	NOT IN SCOPE	
3-3	CORR	WSF-1	RB-1	PT-1	PT-1	PT-1	PT-1			AP1			
3-3	CORR	WSF-1, WSF-2	RB-1	PT-1, PT-2, IRWC-7	PT-1, PT-2, IRWC-7	PT-1, PT-2, IRWC-7	PT-1, PT-2, IRWC-7			AP1, GYP	PT-1	NOT IN SCOPE	
3CORR	CORR	WSF-1	RB-1	PT-1	PT-1	PT-1	PT-1			AP1, GYP	PT-1		
328	CLEAN LINEN	WSF-1	RB-1	PT-1, IRWC-1	PT-1, IRWC-1	PT-1, IRWC-1	PT-1, IRWC-1			AP1			
329	PUBLIC TLT (TNPG1)	T-4	T-1	PT-2A	PT-2A	PT-2A	PT-2A	SS-1 (APRON)	SS-1	GYP	PT-8A		
337	STAFF LOUNGE (SU001)	WSF-2	RB-1	PT-1	PT-1	PT-1	PT-1			AP1			
337A	LOCKERS (LR001)	WSF-2	RB-1	PT-1	PT-1	PT-1	PT-1			AP1			
337B	STAFF TLT (TNPG1)	T-4	T-1	PT-2A	PT-2A	PT-2A	PT-2A	SS-1 (APRON)	SS-1	GYP	PT-8A		
338	HSKPG (JANC1)	WSF-1	RB-1	PT-1A, IRWC-1	PT-1A, IRWC-1	PT-1A, IRWC-1	PT-1A, IRWC-1			AP1			
341	FAMILY LOUNGE (WRFO1)	WSF-2	RB-1	PT-1	PT-1	PT-1	PT-1			AP1			
342	PAINTRY (NCWD1)	WSF-1	RB-1	PT-1	PT-1	PT-1	PT-1			AP1			
343	CONSULT (LR001)	WSF-2	RB-1	PT-1	PT-1	PT-1	PT-1			AP1			
349	EQUIP STOR	WSF-2	RB-1	PT-1, IRWC-7	PT-1, IRWC-7	PT-1, IRWC-7	PT-1, IRWC-7			AP1			
350	MOBILE X-RAY ALCOVE (XRM01)	WSF-3	RB-1	-	PT-2	PT-2	PT-2			AP1, GYP	PT-3		
351	WORKSTATION (OFA07)	WSF-3	RB-1	PT-1	PT-1	PT-1	PT-1	PL-1	SS-1	AP1, GYP	PT-1		
352	NURSE STATION (INSTA1)	WSF-3	RB-1	PT-1	PT-1	PT-1	PT-1	PL-1, WP-5	SS-1	AP1, GYP	PT-1		
353	NURSE WORK ROOM (WRWH1)	WSF-2	RB-1	PT-1	PT-1	PT-1	PT-1			AP1			
355	PATIENT ROOM (BRSM1)	WSF-2, WSF-3	RB-1	PT-1	PT-1	PT-1, IRWC-2, IRWC-6	PT-1	PL-2	SS-1	AP1, GYP	PT-7		
355A	TLT (TSPG1)	T-2	T-1	PT-2A	PT-2A	PT-2A	PT-2A	SS-1 (APRON)	SS-1	GYP	PT-8A		
356	PATIENT ROOM (BRSM1)	WSF-2, WSF-3	RB-1	PT-1	PT-1	PT-1, IRWC-2, IRWC-3	PT-1	PL-2	SS-1	AP1, GYP	PT-4		
356A	TLT (TSPG1)	T-2	T-1	PT-2A	PT-2A	PT-2A	PT-2A	SS-1 (APRON)	SS-1	GYP	PT-8A		
357	PATIENT ROOM (BRSM1)	WSF-2, WSF-3	RB-1	PT-1	PT-1	PT-1, IRWC-2, IRWC-6	PT-1	PL-2	SS-1	AP1, GYP	PT-7		
357A	TLT (TSPG1)	T-2	T-1	PT-2A	PT-2A	PT-2A	PT-2A	SS-1 (APRON)	SS-1	GYP	PT-8A		
358	STAFF TLT (TNPG1)	T-4	T-1	PT-2A	PT-2A	PT-2A	PT-2A	SS-1 (APRON)	SS-1	GYP	PT-8A		
359	HAC CLOSET												
361	MED RM (MEDP1)	WSF-3	RB-1	PT-1	PT-1	PT-1	PT-1	PL-1	SS-1	GYP	PT-1		
362	ELEC CLOSET	WSF-2	RB-1	PT-1	PT-1	PT-1	PT-1			AP1			
363	AIRBORNE INF. ISO. PT RM (BRSM1)	WSF-3	RB-1	PT-1A	PT-1A	PT-1A, IRWC-2, IRWC-3	PT-1A			AP1, GYP	PT-4		
363A	ANTE RM	WSF-2	RB-1	PT-1A	PT-1A	PT-1A	PT-1A			AP1			
363B	TLT (TSPG1)	T-2	T-1	PT-2A	PT-2A	PT-2A	PT-2A	SS-1 (APRON)	SS-1	GYP	PT-8A		
365	SOLED UTILITY (SRSE1)	WSF-1	RB-1	PT-1, IRWC-1	PT-1, IRWC-1	PT-1, IRWC-1	PT-1, IRWC-1			AP1			
366	PATIENT ROOM (BRSM1)	WSF-2, WSF-3	RB-1	PT-1	PT-1	PT-1A, IRWC-2, IRWC-6	PT-1	PL-2	SS-1	AP1, GYP	PT-7		
366A	TLT (TSPG1)	T-2	T-1	PT-2A	PT-2A	PT-2A	PT-2A	SS-1 (APRON)	SS-1	GYP	PT-8A		
367	PATIENT ROOM (BRSM1)	WSF-2, WSF-3	RB-1	PT-1A, IRWC-2, IRWC-3	PT-1	PT-1	PT-1	PL-2	SS-1	AP1, GYP	PT-4		
367A	TLT (TSPG1)	T-2	T-1	PT-2A	PT-2A	PT-2A	PT-2A	SS-1 (APRON)	SS-1	GYP	PT-8A		
368	PATIENT ROOM (BRSM1)	WSF-2, WSF-3	RB-1	PT-1A, IRWC-2, IRWC-6	PT-1	PT-1	PT-1	PL-2	SS-1	AP1, GYP	PT-7		
368A	TLT (TSPG1)	T-2	T-1	PT-2A	PT-2A	PT-2A	PT-2A	SS-1 (APRON)	SS-1	GYP	PT-8A		
369	PATIENT ROOM (BRSM1)	WSF-2, WSF-3	RB-1	PT-1A, IRWC-2, IRWC-3	PT-1	PT-1	PT-1	PL-2	SS-1	AP1, GYP	PT-4		
369A	TLT (TSPG1)	T-2	T-1	PT-2A	PT-2A	PT-2A	PT-2A	SS-1 (APRON)	SS-1	GYP	PT-8A		
370	CHARTING (OFA07)	WSF-1	RB-1	PT-1	PT-1	PT-1	PT-1	PL-1	SS-1	AP1			
371	BARIATRIC PATIENT ROOM (BRMS1)	WSF-2, WSF-3	RB-1	PT-1	PT-1	PT-1A, IRWC-2, IRWC-6	PT-1	PL-2	SS-1	AP1, GYP	PT-7		
371A	BARIATRIC TLT (TSPG1)	T-2	T-1	PT-2A	PT-2A	PT-2A	PT-2A	SS-1 (APRON)	SS-1	GYP	PT-8A		
372	PATIENT ROOM (BRSM1)	WSF-2, WSF-3	RB-1	PT-1	PT-1	PT-1A, IRWC-2, IRWC-3	PT-1	PL-2	SS-1	AP1, GYP	PT-4		
372A	TLT (TSPG1)	T-2	T-1	PT-2A	PT-2A	PT-2A	PT-2A	SS-1 (APRON)	SS-1	GYP	PT-8A		
C3-01	CORR	WSF-1	RB-1	PT-1	PT-1	PT-1	PT-1			AP1			
C3-02	CORR	WSF-1	RB-1	PT-1	PT-1	PT-1	PT-1			AP1			
C3-03	CORR	WSF-1	RB-1	PT-1	PT-1	PT-1	PT-1			AP1			
C301	STORAGE (RSSE1)	WSF-1	RB-1	PT-1, IRWC-1	PT-1, IRWC-1	PT-1, IRWC-1	PT-1, IRWC-1			AP1			
C302	OFFICE (OFA07)	WSF-2	RB-1	PT-1	PT-1	PT-1	PT-1			AP1			
C303	PSA OFFICE (OFA07)	WSF-2	RB-1	PT-1	PT-1	PT-1	PT-1			AP1			
C304	INPATIENT OFFICE (OFA07)	WSF-2	RB-1	PT-1	PT-1	PT-1	PT-1			AP1			
C305	GENERAL STORAGE	WSF-1	RB-1	PT-1, IRWC-1	PT-1, IRWC-1	PT-1, IRWC-1	PT-1, IRWC-1			AP1			
C306	OFFICE	WSF-1	RB-1	PT-1	PT-1	PT-1	PT-1			AP1			
C307	PT TREATMENT	WSF-3	RB-1	PT-1	PT-1	PT-1	PT-1			AP1			
C307A	PT WORKSTATIONS	WSF-3	RB-1	PT-1	PT-1	PT-1	PT-1	PL-1, WP-5	SS-1	AP1			
C308	PROSTHETICS/LOGISTICS STORAGE	WSF-2	RB-1	PT-1, IRWC-1	PT-1, IRWC-1	PT-1, IRWC-1	PT-1, IRWC-1			AP1			
C309	ELEC CLOSET	WSF-2	RB-1	PT-1	PT-1	PT-1	PT-1			AP1			
C310	DATA CLOSET	WSF-2	RB-1	PT-1	PT-1	PT-1	PT-1			AP1			
C311	OFFICE	WSF-2	RB-1	PT-1	PT-1	PT-1	PT-1			AP1			
C312	ASSIST. MAN.	WSF-2	RB-1	PT-1	PT-1	PT-1	PT-1			AP1			
C313	NURSE MAN.	WSF-2	RB-1	PT-1	PT-1	PT-1	PT-1			AP1			
C314	NOD SUPER/OA09	WSF-2	RB-1	PT-1	PT-1	PT-1	PT-1			AP1			
C315	NOD SHARED (OFA09)	WSF-2	RB-1	PT-1	PT-1	PT-1	PT-1			AP1			
C316	CONFERENCE (CFR02)	WSF-2	RB-1	PT-1	PT-1	PT-1	PT-1			AP1			
C317	OFFICE	WSF-2	RB-1	PT-1	PT-1	PT-1	PT-1			AP1			
C318	OFFICE	WSF-2	RB-1	PT-1	PT-1	PT-1	PT-1			AP1			
C319	OFFICE	WSF-2	RB-1										

SIGNAGE AND ARTWORK GENERAL NOTES

- A. THE SIGNAGE VENDOR SHALL PROVIDE SHOP DRAWINGS FOR ALL NEW SIGNS TO BE REVIEWED AND APPROVED BY THE VA PRIOR TO FABRICATION.
- B. ALL SIGNAGE INDICATED IS A BASIS OF DESIGN. ALL CONTENT, MODIFICATIONS, AND VERBIAGE ARE TO BE DETERMINED BY THE VA PRIOR TO FABRICATION.
- C. WHEN EXISTING SIGNAGE IS REMOVED CONTRACTOR SHALL REPAIR ANY DAMAGE TO SUBSTRATE AND MATCH FINISHES PRIOR TO THE INSTALLATION OF NEW OR SALVAGED SIGNAGE.
- D. SIGNAGE SHOULD BE INSTALLED TO COMPLY WITH ALL APPLICABLE CODES. ALL TACTILE ROOM NUMBER SIGNS OR OTHER TACTILE ROOM IDENTIFICATION SIGNS ARE REQUIRED TO MEET ABA/ADA REQUIREMENT FOR HEIGHT AND BRAILLE TEXT.
- E. PROVIDE BLOCKING FOR VA PROVIDED SIGNAGE.

SIGNAGE AND ARTWORK PLAN NOTES

- 1. EXISTING WAYFINDING SIGN TO BE REPLACED AND RENAMED PER VA'S REQUESTS. THIS WILL NEED TO BE MODIFIED TO ACCOMMODATE THE CHANGES AND ADDITIONS.
- 2. PROVIDE BLOCKING FOR VA PROVIDED ARTWORK. COORDINATE EXACT SIZE AND LOCATION WITH VA.
- 3. REINSTALL SALVAGED MODIFIED DIRECTIONAL SIGN.



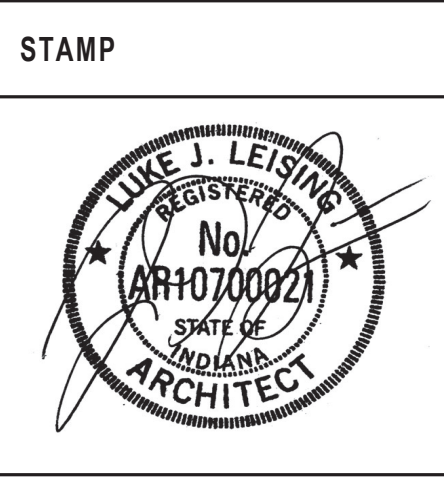
SECOND FLOOR SIGNAGE & ARTWORK PLAN
SCALE: 1/8" = 1'-0"

KEYPLAN ISOMETRIC
SCALE: 1" = 100'-0"

Revisions:	Date:

CONSULTANT
 Consultant:
 CMTA CONSULTING ENGINEERS
 10411 MEETING STREET
 PROSPECT, KY 40059
 (502)-326-3085

ARCHITECT/ENGINEER OF RECORD
 A/E:
 GUIDON DESIGN INC.
 1221 N PENNSYLVANIA STREET
 INDIANAPOLIS, IN 46202
 (317)-800-6388



Office of Construction and Facilities Management
 VA U.S. Department of Veterans Affairs

Drawing Title
2ND FLOOR SIGNAGE & ARTWORK PLAN
 Approved:

Phase
BID DOCUMENTS

Project Title
VA WICHITA - MED/SURG BEDS FOR PATIENT PRIVACY
 Location
WICHITA, KANSAS

Project Number
589-701
 Building Number
1 & 1C
 Drawing Number
A1901

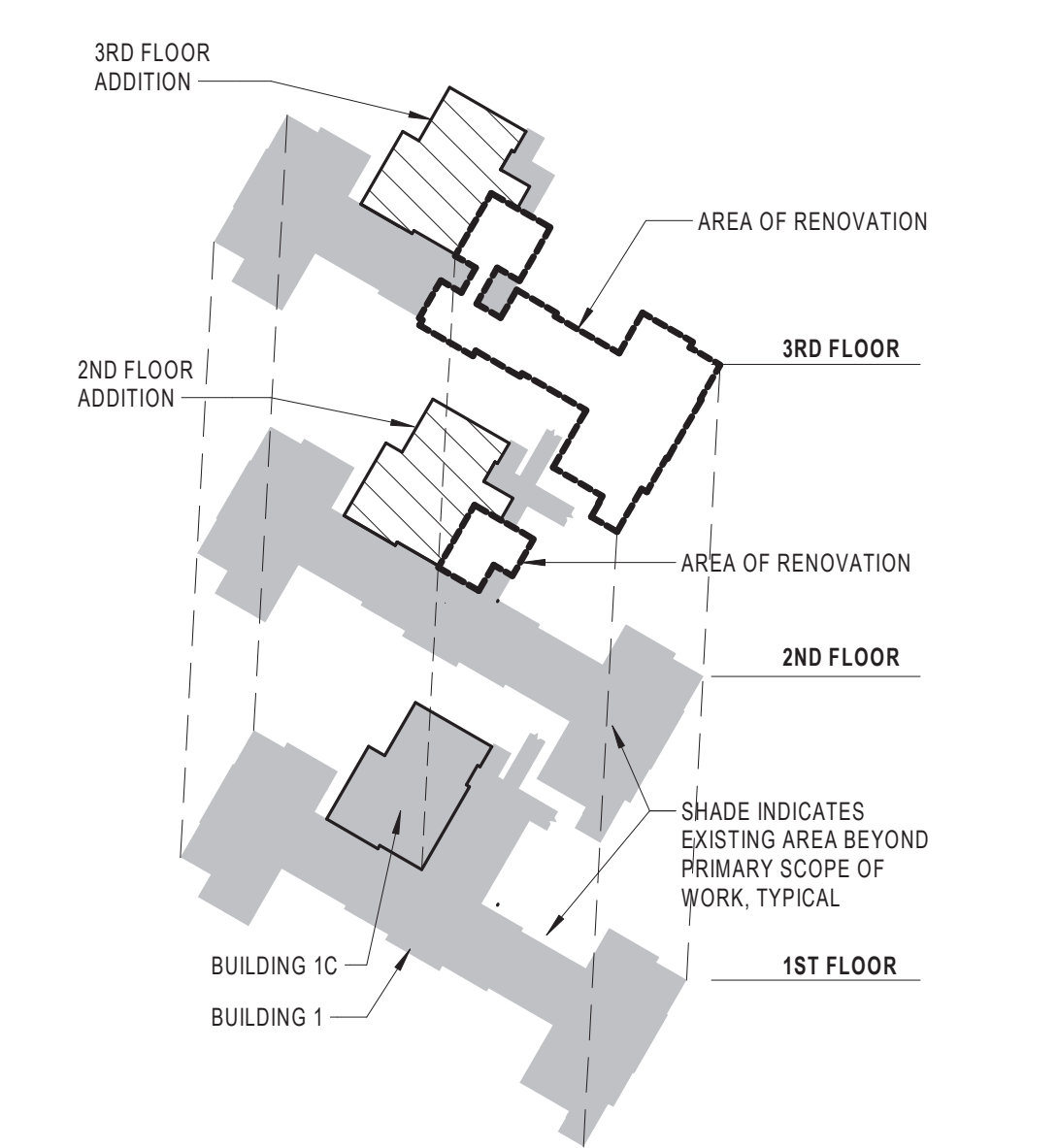
Issue Date
 5/22/2020
 Checked
 JDF
 Drawn
 DDJ

SIGNAGE AND ARTWORK GENERAL NOTES

- A. THE SIGNAGE VENDOR SHALL PROVIDE SHOP DRAWINGS FOR ALL NEW SIGNS TO BE REVIEWED AND APPROVED BY THE VA PRIOR TO FABRICATION.
- B. ALL SIGNAGE INDICATED IS A BASIS OF DESIGN. ALL CONTENT, MODIFICATIONS, AND VERBIAGE ARE TO BE DETERMINED BY THE VA PRIOR TO FABRICATION.
- C. WHEN EXISTING SIGNAGE IS REMOVED CONTRACTOR SHALL REPAIR ANY DAMAGE TO SUBSTRATE AND MATCH FINISHES PRIOR TO THE INSTALLATION OF NEW OR SALVAGED SIGNAGE.
- D. SIGNAGE SHOULD BE INSTALLED TO COMPLY WITH ALL APPLICABLE CODES. ALL TACTILE ROOM NUMBER SIGNS OR OTHER TACTILE ROOM IDENTIFICATION SIGNS ARE REQUIRED TO MEET ABA/ADA REQUIREMENT FOR HEIGHT AND BRAILLE TEXT.
- E. PROVIDE BLOCKING FOR VA PROVIDED SIGNAGE.

SIGNAGE AND ARTWORK PLAN NOTES

- 1. EXISTING WAYFINDING SIGN TO BE REPLACED AND RENAMED PER VA'S REQUESTS. THIS WILL NEED TO BE MODIFIED TO ACCOMMODATE THE CHANGES AND ADDITIONS.
- 2. PROVIDE BLOCKING FOR VA PROVIDED ARTWORK. COORDINATE EXACT SIZE AND LOCATION WITH VA.
- 3. REINSTALL SALVAGED MODIFIED DIRECTIONAL SIGN.



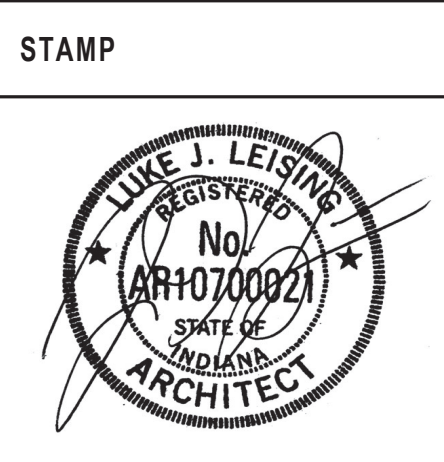
THIRD FLOOR SIGNAGE & ARTWORK PLAN
 1. A302 SCALE: 1/8" = 1'-0"

KEYPLAN ISOMETRIC
 SCALE: 1" = 100'-0"

Revisions:	Date:

CONSULTANT
 Consultant:
 CMTA CONSULTING ENGINEERS
 10411 MEETING STREET
 PROSPECT, KY 40059
 (502)-326-3085

ARCHITECT/ENGINEER OF RECORD
 A/E:
 GUIDON DESIGN INC.
 1221 N PENNSYLVANIA STREET
 INDIANAPOLIS, IN 46202
 (317)-800-6388



Office of Construction and Facilities Management
 VA U.S. Department of Veterans Affairs

Drawing Title
3RD FLOOR SIGNAGE & ARTWORK PLAN
 Approved:

Phase
BID DOCUMENTS

Project Title VA WICHITA - MED/SURG BEDS FOR PATIENT PRIVACY		Project Number 589-701	
Location WICHITA, KANSAS		Building Number 1 & 1C	
Issue Date 5/22/2020	Checked JDF	Drawn JDJ	Drawing Number A1902

C:\Users\jones\Documents\18_1019105 WICHITA MED/SURG A18_jones71JSC.rvt

A

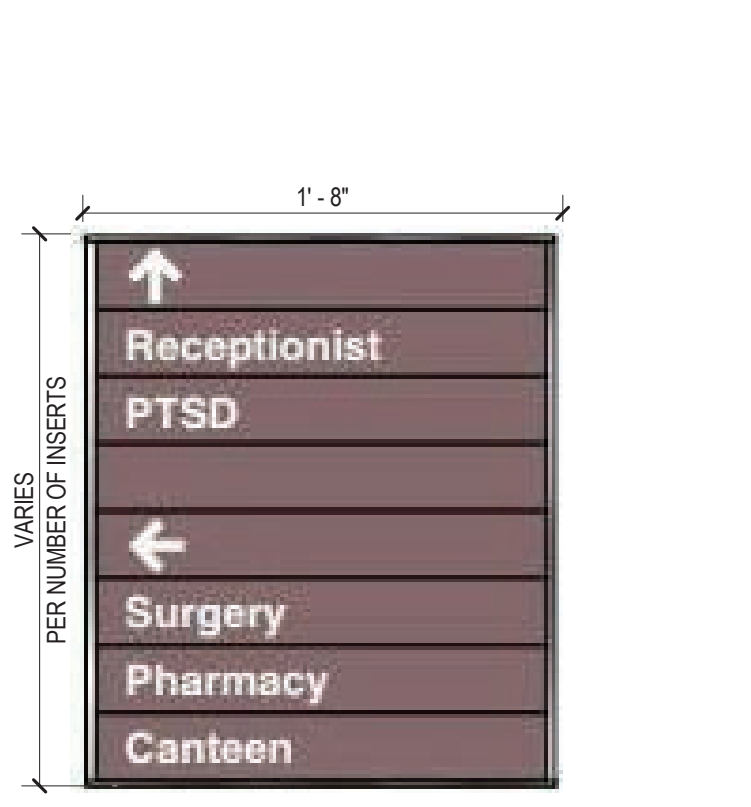
B

C

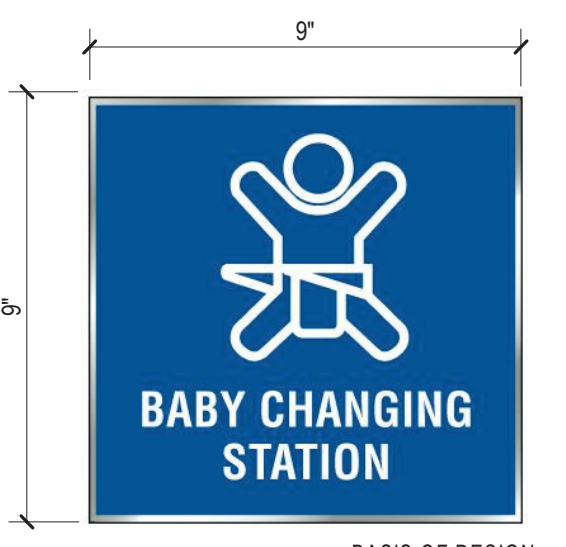
D

E

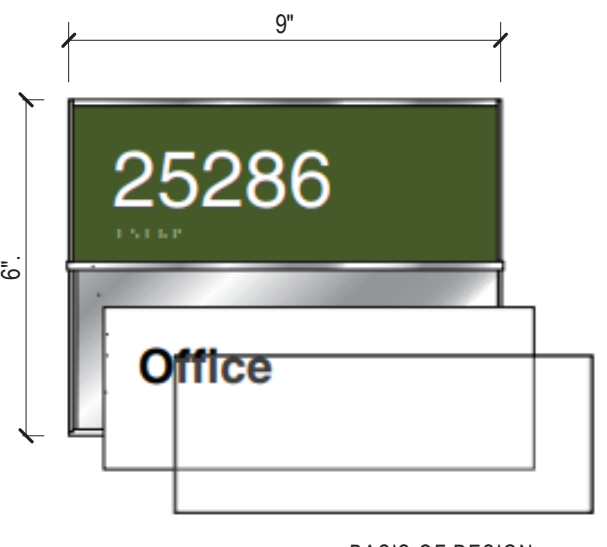
F



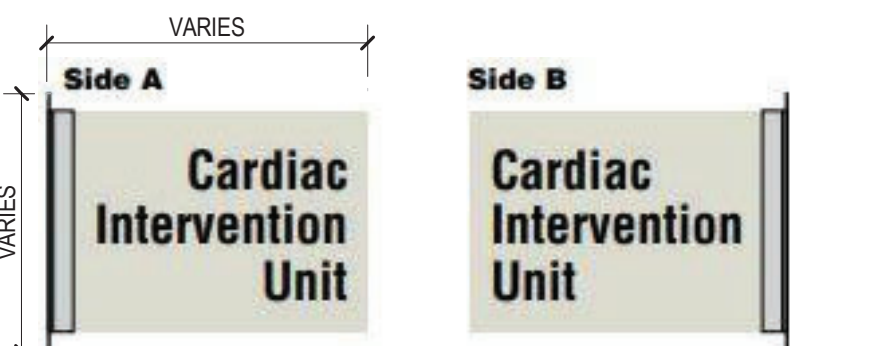
IN-14.01 NOT TO SCALE



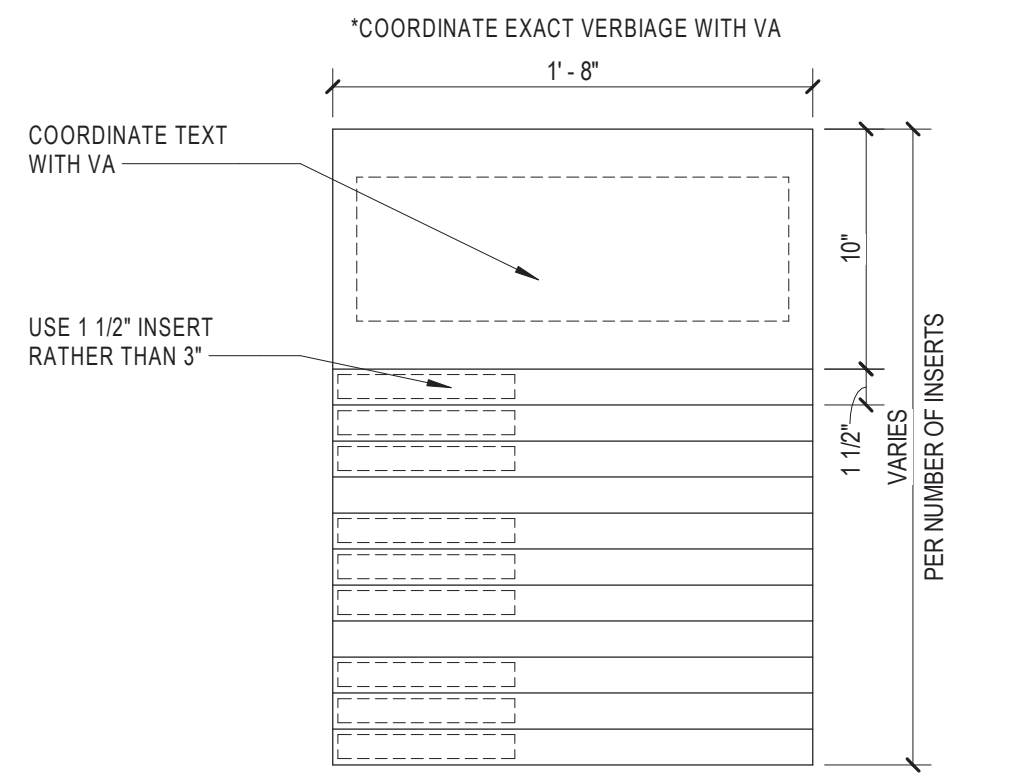
IN-09.08 NOT TO SCALE



IN-04.04 NOT TO SCALE



IN-13.01 NOT TO SCALE



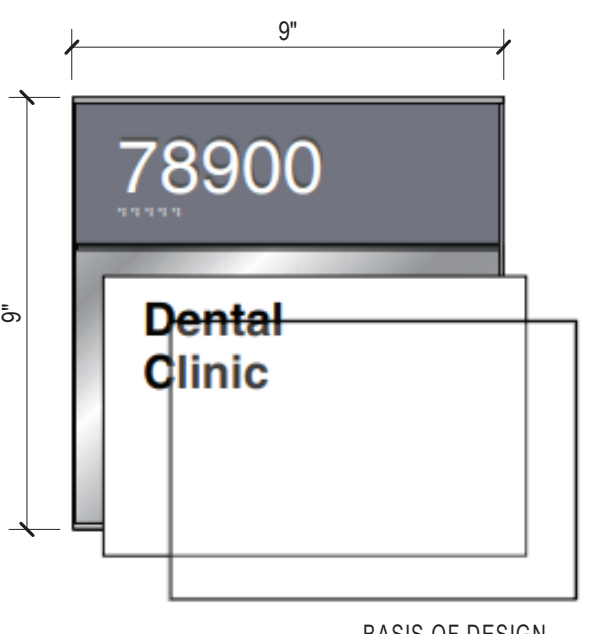
IN-14.13 NOT TO SCALE



IN-14.13 NOT TO SCALE



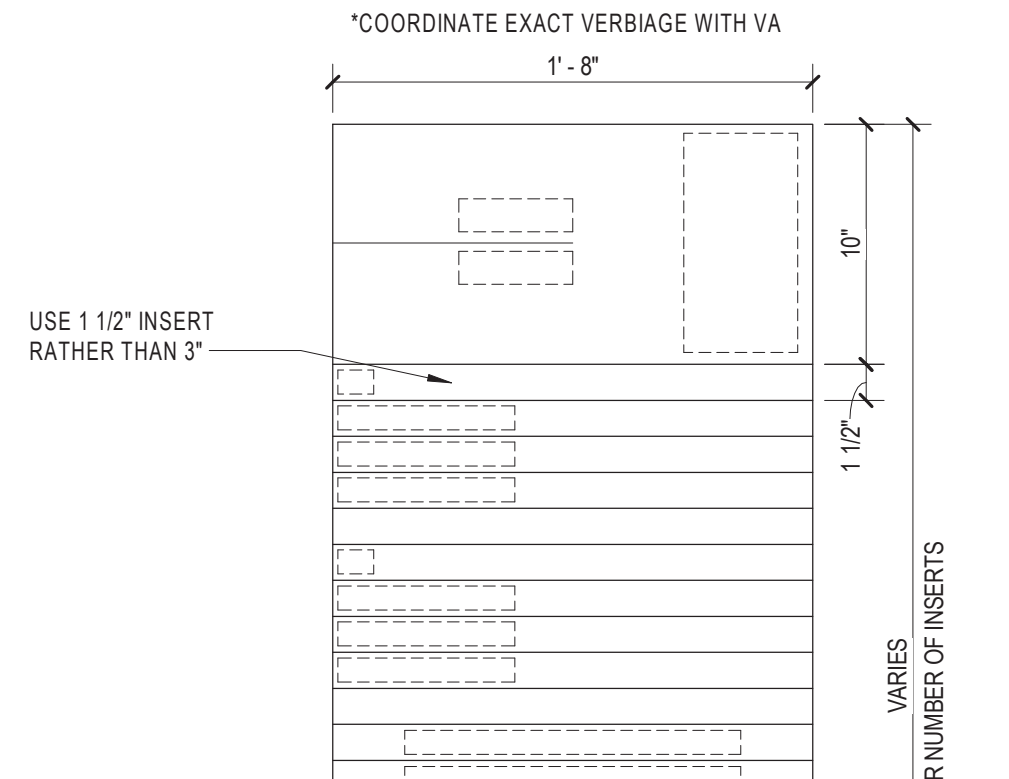
IN-09.03 NOT TO SCALE



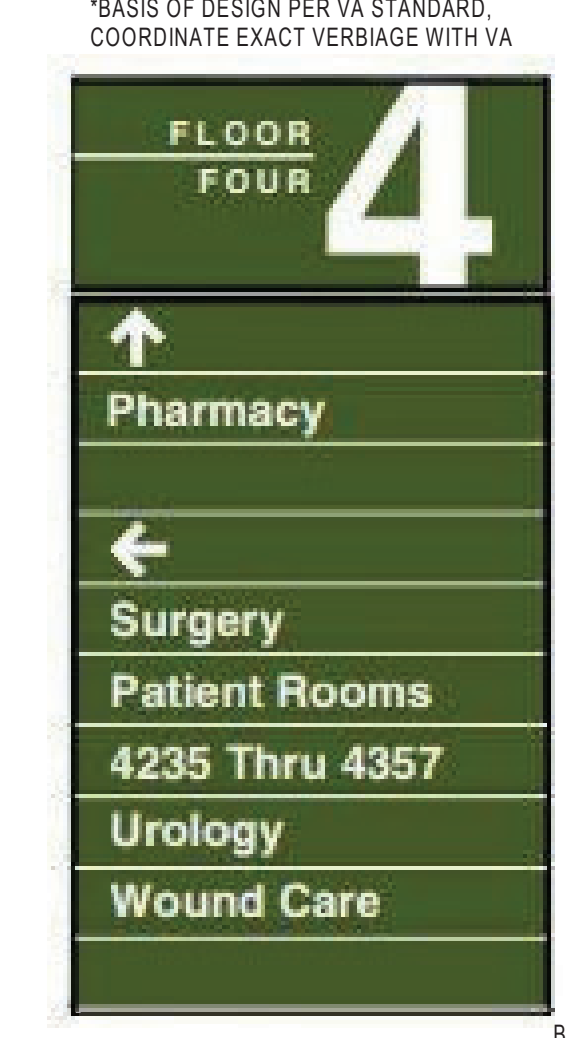
IN-04.03 NOT TO SCALE



STANDARD VA BUILDING 1 LOGO NOT TO SCALE



IN-14.14 NOT TO SCALE



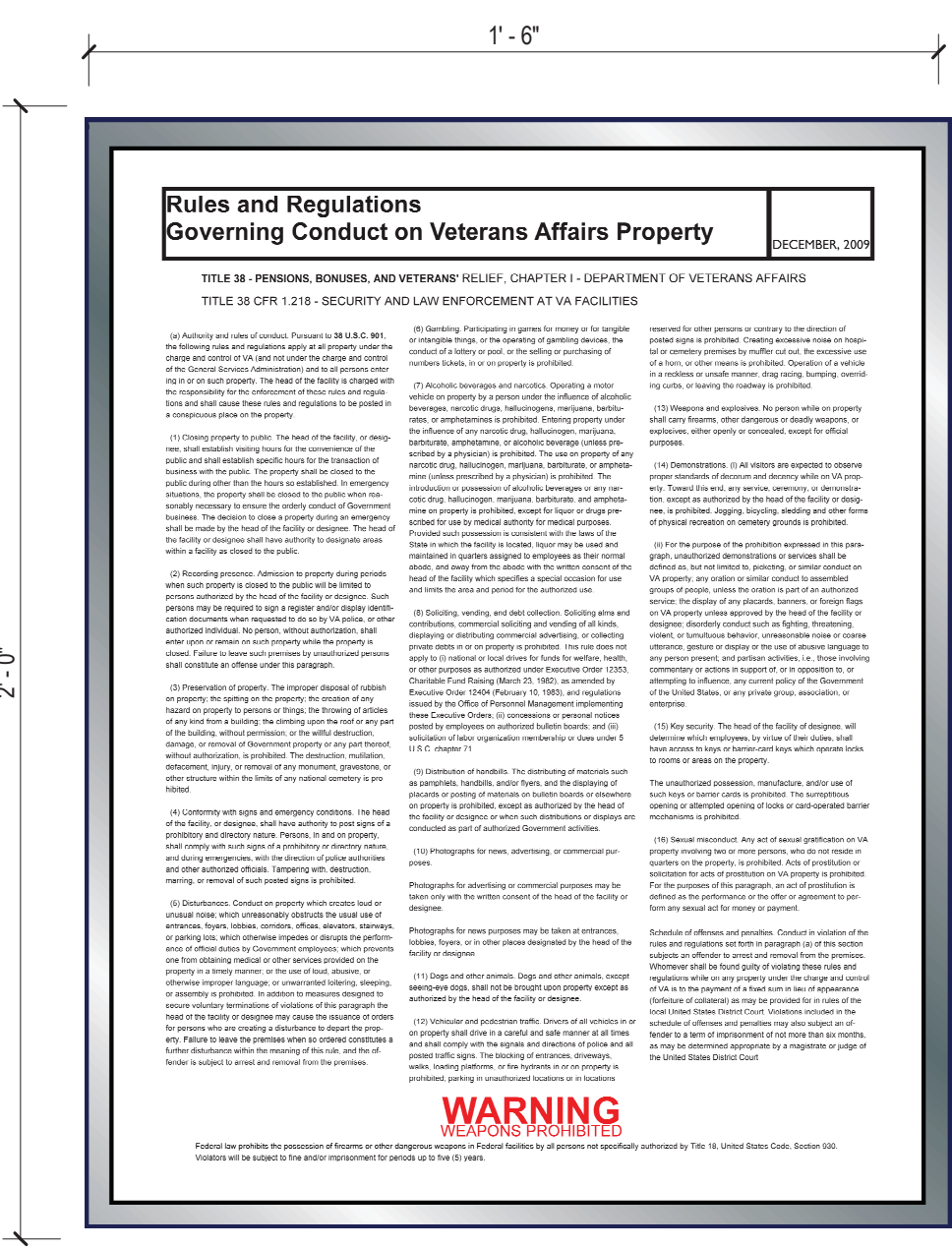
IN-14.14 NOT TO SCALE



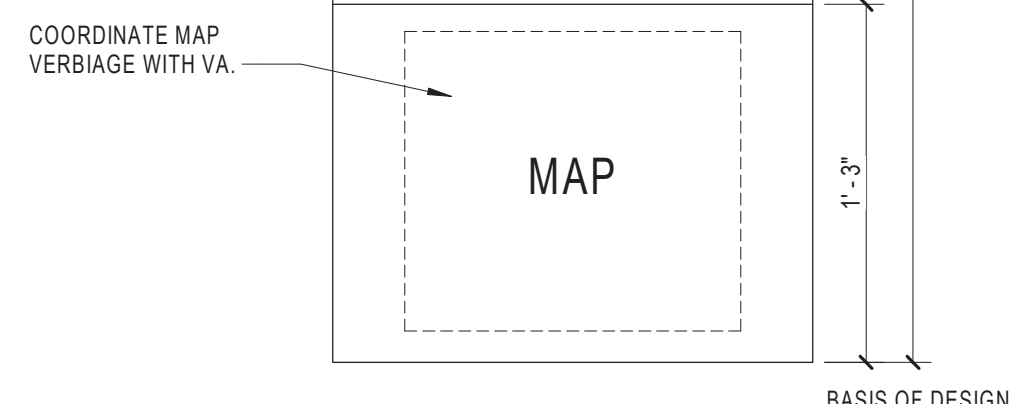
IN-09.02 NOT TO SCALE



IN-01.22 NOT TO SCALE



IN-02.08 NOT TO SCALE



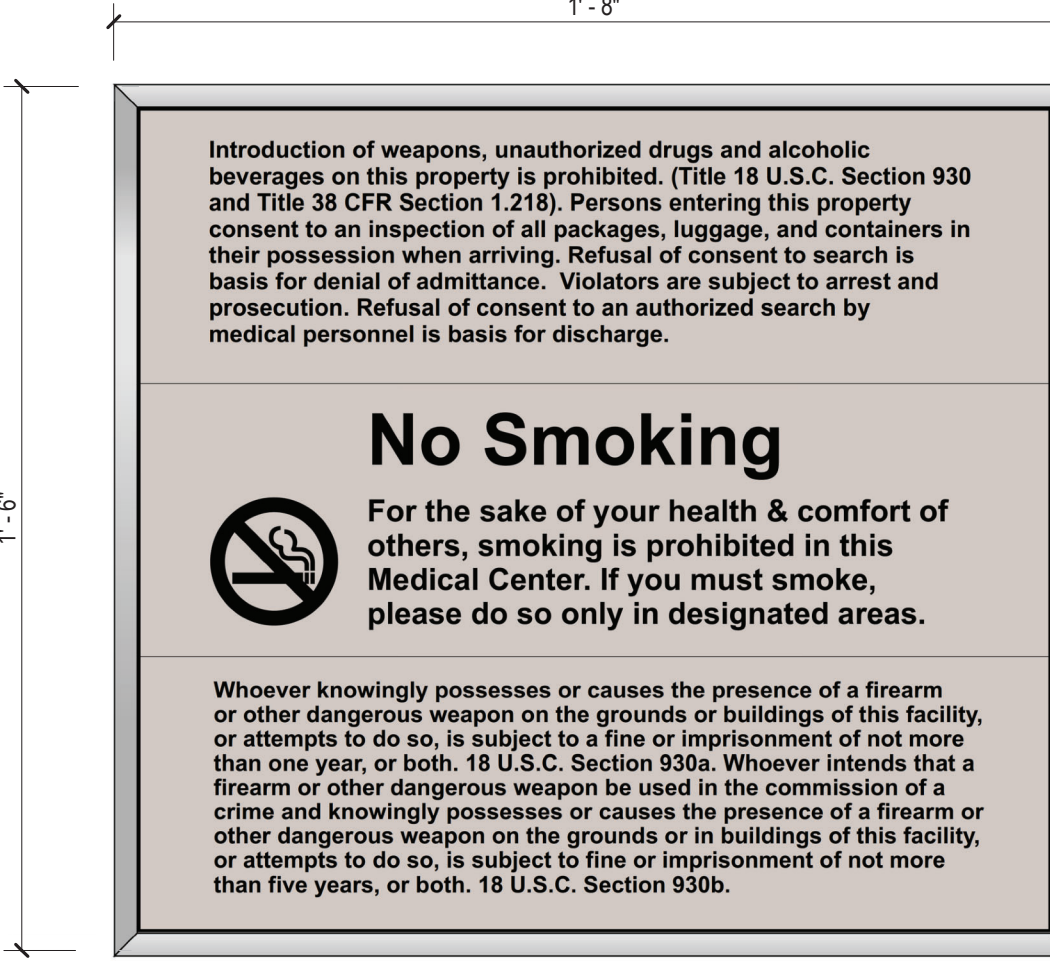
IN-14.14 NOT TO SCALE



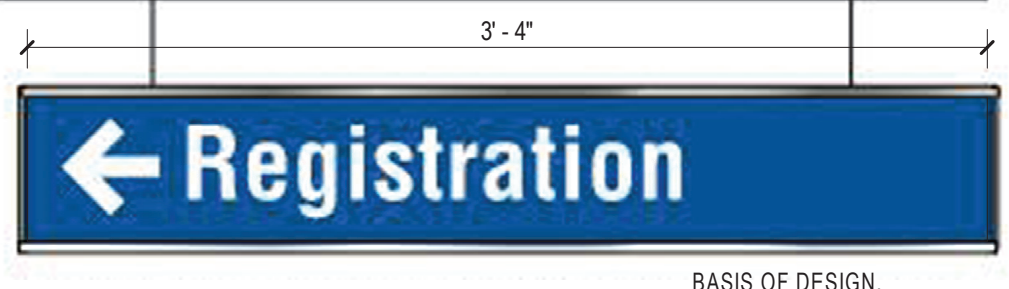
IN-09.01 NOT TO SCALE



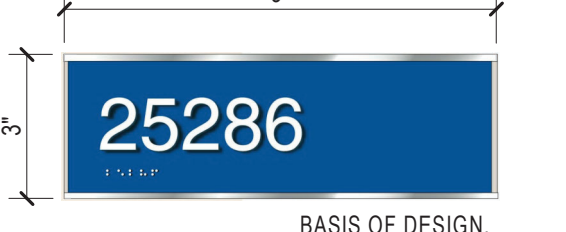
IN-08.02 NOT TO SCALE



IN-02.01 NOT TO SCALE



IN-15.51 NOT TO SCALE



IN-03.01 NOT TO SCALE



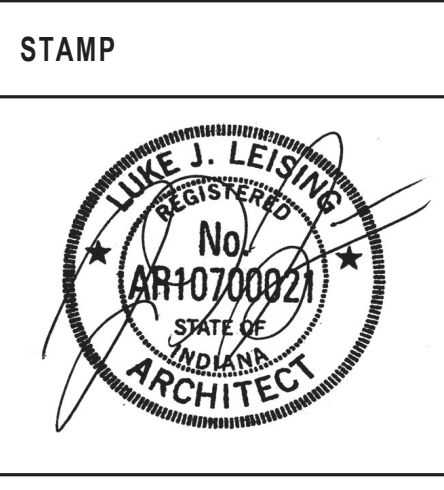
IN-01.02 NOT TO SCALE

C:\Users\jones\Documents\18_1019105 WICHITA MED/SURG A18_jones71251.rvt 5/22/2020 7:00:30 AM

Revisions:	Date:

CONSULTANT
 Consultant:
 CMTA CONSULTING ENGINEERS
 10411 MEETING STREET
 PROSPECT, KY 40059
 (502)-326-3085

ARCHITECT/ENGINEER OF RECORD
 A/E:
 GUIDON DESIGN INC.
 1221 N PENNSYLVANIA STREET
 INDIANAPOLIS, IN 46202
 (317)-800-6388



Office of Construction and Facilities Management
 VA U.S. Department of Veterans Affairs

Drawing Title
SIGNAGE TYPES
 Approved:

Phase
BID DOCUMENTS

Project Title
VA WICHITA - MED/SURG BEDS FOR PATIENT PRIVACY
 Location
WICHITA, KANSAS
 Issue Date
 5/22/2020
 Checked
 JDF
 Drawn
 JDJ

Project Number
 589-701
 Building Number
 1 & 1C
 Drawing Number
 A1903



EQUIPMENT SCHEDULE			
JSNMARK	DESCRIPTION	FFE FURNISHED	COMMENTS
CFCI - CONTRACTOR FURNISHED CONTRACTOR INSTALLED			
A1110	MODULAR HEADWALL SYSTEM	CFCI - CONTRACTOR FURNISHED CONTRACTOR INSTALLED	
A1111	HEADWALL MONITOR	CFCI - CONTRACTOR FURNISHED CONTRACTOR INSTALLED	
A1201	Ceiling Mounted	CFCI - CONTRACTOR FURNISHED CONTRACTOR INSTALLED	
A5030	SHOWER STALL BENCH	CFCI - CONTRACTOR FURNISHED CONTRACTOR INSTALLED	
A5030B	FOLDING SHOWER SEAT	CFCI - CONTRACTOR FURNISHED CONTRACTOR INSTALLED	PROVIDE IN WALL CARRIER FOR SECURE ATTACHMENT
GFCR - GOVERNMENT FURNISHED AND CONTRACTOR ROUGH-IN			
A5110	24" HORIZONTAL GRAB BAR	GFCR - CONTRACTOR FURNISHED CONTRACTOR INSTALLED	
A5170	WEIGHTED SHOWER CURTAIN AND SWINGING CURTAIN ROD	GFCR - CONTRACTOR FURNISHED CONTRACTOR INSTALLED	
A5180	CUBICLE CURTAIN AND CURTAIN TRACK	GFCR - CONTRACTOR FURNISHED CONTRACTOR INSTALLED	
M0515	TELEVISION AND MOUNTING BRACKET	GFCR - CONTRACTOR FURNISHED CONTRACTOR INSTALLED	
P5040	HAND-HELD SHOWER HEAD	GFCR - CONTRACTOR FURNISHED CONTRACTOR INSTALLED	
U0006	RECESSED DIALYSIS BOX, SEE PLUMBING DRAWINGS	CFCI - CONTRACTOR FURNISHED CONTRACTOR INSTALLED	
GFCR - GOVERNMENT FURNISHED AND CONTRACTOR ROUGH-IN			
A5175	SOAP DISH	GFCR - GOVERNMENT FURNISHED AND CONTRACTOR ROUGH-IN	
M1802	MOUNTED CHARTING WORKSTATION	GFCR - GOVERNMENT FURNISHED AND CONTRACTOR ROUGH-IN	
R4650	FOLLETT SYMPHONY PLUS 12 SERIES ICE AND WATER DISPENSER	GFCR - GOVERNMENT FURNISHED AND CONTRACTOR ROUGH-IN	WATER FILTER PROVIDED
GFI - GOVERNMENT FURNISHED AND INSTALLED			
A1015	DESK TELEPHONE	GFI - GOVERNMENT FURNISHED AND INSTALLED	
A1030	HALF HEIGHT PERSONAL LOCKER	GFI - GOVERNMENT FURNISHED AND INSTALLED	
A1067	WALL MIRROR	GFI - GOVERNMENT FURNISHED AND INSTALLED	
A5077	SOAP DISPENSER	GFI - GOVERNMENT FURNISHED AND INSTALLED	
A5090	NAPKIN DISPENSER	GFI - GOVERNMENT FURNISHED AND INSTALLED	
A5107	GLOVE DISPENSER	GFI - GOVERNMENT FURNISHED AND INSTALLED	
A5108	SHARPS WASTE UNIT	GFI - GOVERNMENT FURNISHED AND INSTALLED	
E0945	MOBILE COMPUTER CART	GFI - GOVERNMENT FURNISHED AND INSTALLED	
E0954	CRASH CART WITH LIFEPAK	GFI - GOVERNMENT FURNISHED AND INSTALLED	
F0205	SIDE CHAIR WITH ARMS	GFI - GOVERNMENT FURNISHED AND INSTALLED	
F0220	CHAIR, CONFERENCE	GFI - GOVERNMENT FURNISHED AND INSTALLED	
F0225	CHAIR, DINING	GFI - GOVERNMENT FURNISHED AND INSTALLED	
F0265	RECLINING CHAIR	GFI - GOVERNMENT FURNISHED AND INSTALLED	
F0275	CHAIR, OFFICE HIGH-BACK	GFI - GOVERNMENT FURNISHED AND INSTALLED	
F0280	DESK CHAIR - LOW BACK	GFI - GOVERNMENT FURNISHED AND INSTALLED	
F0305	CHAIR, WAITING ROOM	GFI - GOVERNMENT FURNISHED AND INSTALLED	
F0365	FOOTSTOOL	GFI - GOVERNMENT FURNISHED AND INSTALLED	

EQUIPMENT SCHEDULE			
JSNMARK	DESCRIPTION	FFE FURNISHED	COMMENTS
F0375	SOFA	GFI - GOVERNMENT FURNISHED AND INSTALLED	
F0400	BEDSIDE CABINET	GFI - GOVERNMENT FURNISHED AND INSTALLED	
F0420	FLING CABINET	GFI - GOVERNMENT FURNISHED AND INSTALLED	
F0515	LINEN SUPPLY CART	GFI - GOVERNMENT FURNISHED AND INSTALLED	
F0650	48" DESK	GFI - GOVERNMENT FURNISHED AND INSTALLED	
F0740	SIDE TABLE	GFI - GOVERNMENT FURNISHED AND INSTALLED	
F0755	CONFERENCE TABLE	GFI - GOVERNMENT FURNISHED AND INSTALLED	
F0775	WORK TABLE	GFI - GOVERNMENT FURNISHED AND INSTALLED	
F0795	DINING TABLE	GFI - GOVERNMENT FURNISHED AND INSTALLED	
F2017	WASTE BASKET	GFI - GOVERNMENT FURNISHED AND INSTALLED	
F3050	WHITEBOARD	GFI - GOVERNMENT FURNISHED AND INSTALLED	
F3065	PATIENT BOARD	GFI - GOVERNMENT FURNISHED AND INSTALLED	
F3200	WALL CLOCK	GFI - GOVERNMENT FURNISHED AND INSTALLED	
K1562	COFFEE MAKER	GFI - GOVERNMENT FURNISHED AND INSTALLED	
K4665	COUNTER MICROWAVE	GFI - GOVERNMENT FURNISHED AND INSTALLED	
M0507	VIDEO CONFERENCE UNIT	GFI - GOVERNMENT FURNISHED AND INSTALLED	
M1801	DESKTOP COMPUTER	GFI - GOVERNMENT FURNISHED AND INSTALLED	
M1840	MULTI-FUNCTIONAL PRINTER	GFI - GOVERNMENT FURNISHED AND INSTALLED	
M1865	FACSIMILE UNIT	GFI - GOVERNMENT FURNISHED AND INSTALLED	
N2055	WIRE SHELVING UNIT	GFI - GOVERNMENT FURNISHED AND INSTALLED	
M3025	PRESSURE REDUCTION MATTRESS	GFI - GOVERNMENT FURNISHED AND INSTALLED	
M3070	MOBILE LINEN HAMPER	GFI - GOVERNMENT FURNISHED AND INSTALLED	
M3110	LINEN WARMING CABINET	GFI - GOVERNMENT FURNISHED AND INSTALLED	
MA255	IV POLE	GFI - GOVERNMENT FURNISHED AND INSTALLED	
MA266	VOLUMETRIC INFUSION PUMP	GFI - GOVERNMENT FURNISHED AND INSTALLED	
MA705	FOLDING PATIENT WHEELCHAIR	GFI - GOVERNMENT FURNISHED AND INSTALLED	
MF010	ELECTRIC PATIENT BED	GFI - GOVERNMENT FURNISHED AND INSTALLED	
MF040	OVERBED TABLE	GFI - GOVERNMENT FURNISHED AND INSTALLED	
MF945	BEDSIDE MONITOR	GFI - GOVERNMENT FURNISHED AND INSTALLED	
ME240	PHYSICAL THERAPY PARALLEL BARS	GFI - GOVERNMENT FURNISHED AND INSTALLED	
MB315	PHYSICAL THERAPY TRACTION TABLE	GFI - GOVERNMENT FURNISHED AND INSTALLED	
PIX1	PIXSYS MACHINE	GFI - GOVERNMENT FURNISHED AND INSTALLED	
PIX2	PIXSYS MACHINE	GFI - GOVERNMENT FURNISHED AND INSTALLED	
PIX3	PIXSYS MACHINE	GFI - GOVERNMENT FURNISHED AND INSTALLED	
PIX4	PIXSYS MACHINE	GFI - GOVERNMENT FURNISHED AND INSTALLED	
RS000	VENDING MACHINE	GFI - GOVERNMENT FURNISHED AND INSTALLED	
RE070	REFRIGERATOR	GFI - GOVERNMENT FURNISHED AND INSTALLED	
RE200	REFRIGERATOR	GFI - GOVERNMENT FURNISHED AND INSTALLED	
RE900	RADIOPHARMACEUTICAL AND BIOLOGICAL REFRIGERATOR	GFI - GOVERNMENT FURNISHED AND INSTALLED	
R7000	REFRIGERATOR	GFI - GOVERNMENT FURNISHED AND INSTALLED	
U0004	MED GAS CYLINDERS AND CART STORAGE	GFI - GOVERNMENT FURNISHED AND INSTALLED	
X4112	DUAL MONITOR PACS	GFI - GOVERNMENT FURNISHED AND INSTALLED	
X4780	MOBILE X-RAY UNIT	GFI - GOVERNMENT FURNISHED AND INSTALLED	

EQUIPMENT GENERAL NOTES

A PROVIDE BLOCKING IN WALLS TO ACCOMMODATE EQUIPMENT, FURNISHINGS, TECHNOLOGY AND WALL MOUNTED ACCESSORIES.

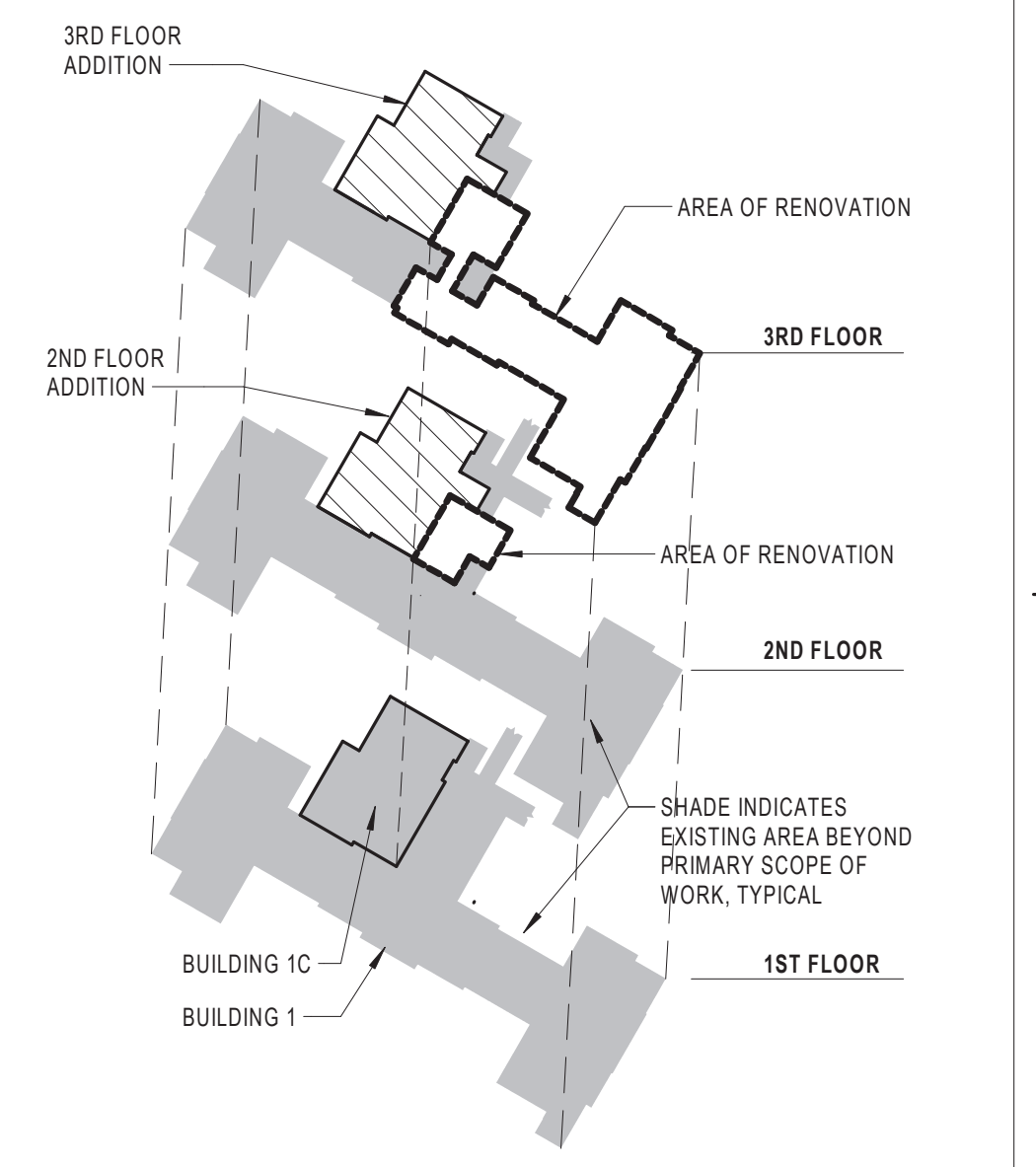
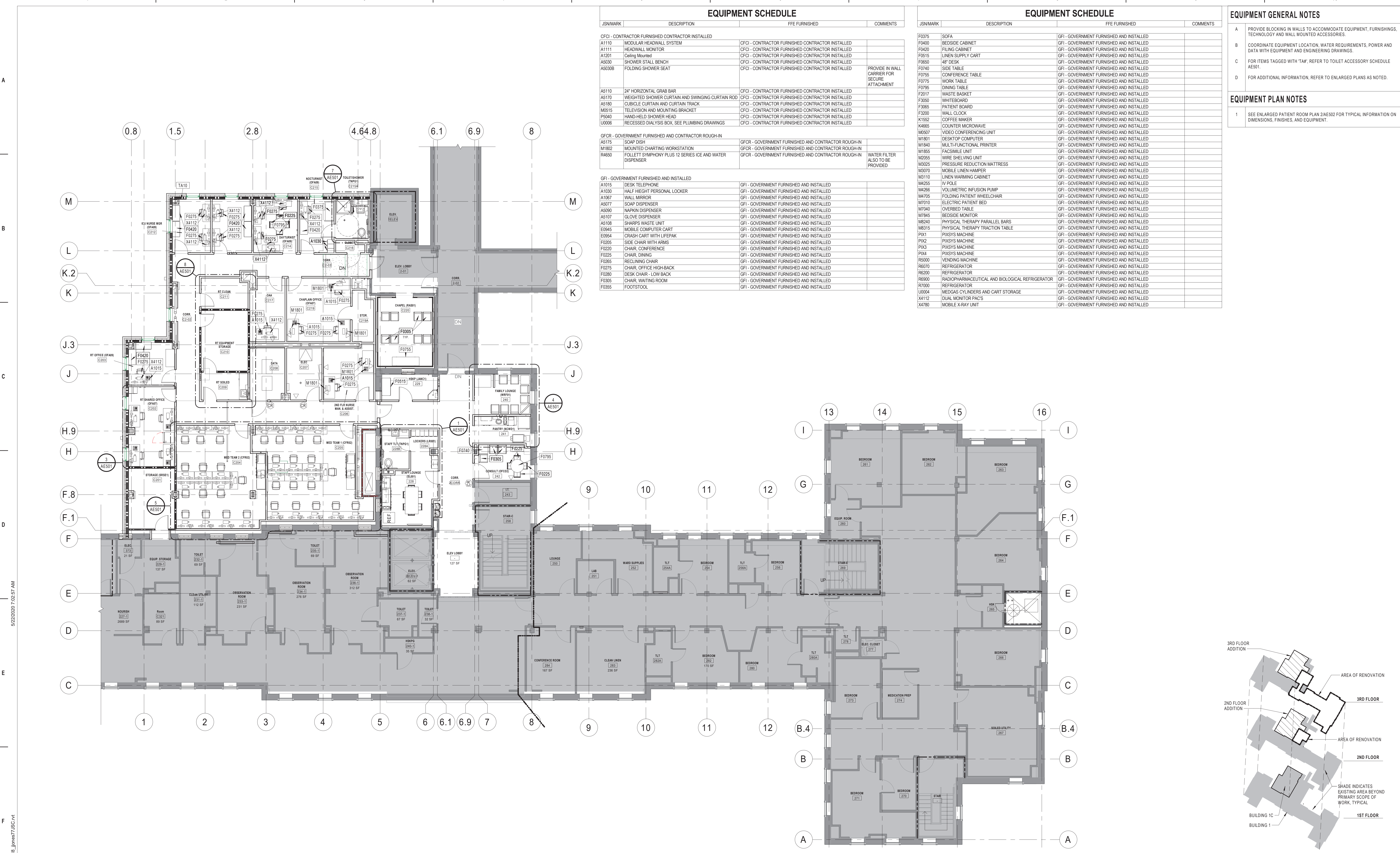
B COORDINATE EQUIPMENT LOCATION, WATER REQUIREMENTS, POWER AND DATA WITH EQUIPMENT AND ENGINEERING DRAWINGS.

C FOR ITEMS TAGGED WITH 'TAF', REFER TO TOILET ACCESSORY SCHEDULE A501.

D FOR ADDITIONAL INFORMATION, REFER TO ENLARGED PLANS AS NOTED.

EQUIPMENT PLAN NOTES

1 SEE ENLARGED PATIENT ROOM PLAN 2/AE502 FOR TYPICAL INFORMATION ON DIMENSIONS, FINISHES, AND EQUIPMENT.

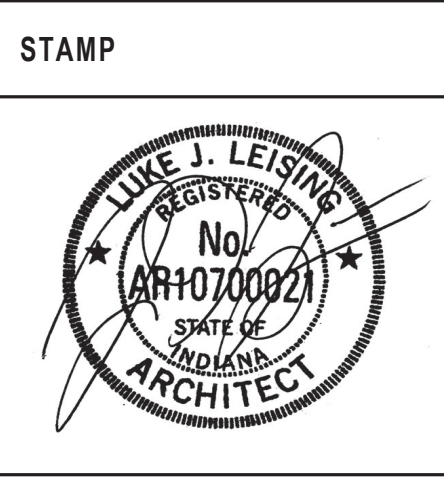


2ND FLOOR EQUIPMENT PLAN
SCALE: 1/8" = 1'-0"

Revisions:	Date:

CONSULTANT
 Consultant:
 CMTA CONSULTING ENGINEERS
 10411 MEETING STREET
 PROSPECT, KY 40059
 (502)-326-3085

ARCHITECT/ENGINEER OF RECORD
 A/E:
 GUIDON DESIGN INC.
 1221 N PENNSYLVANIA STREET
 INDIANAPOLIS, IN 46202
 (317)-800-6388



Office of Construction and Facilities Management
 VA U.S. Department of Veterans Affairs

Drawing Title
2ND FLOOR EQUIPMENT PLAN
 Approved:

Phase
BID DOCUMENTS

Project Title
VA WICHITA - MED/SURG BEDS FOR PATIENT PRIVACY
 Location
WICHITA, KANSAS
 Issue Date
 5/22/2020
 Checked
 JDF
 Drawn
 JDJ

Project Number
589-701
 Building Number
1 & 1C
 Drawing Number
QH101

EQUIPMENT SCHEDULE

JSNMARK	DESCRIPTION	FFE FURNISHED	COMMENTS
GFCI - CONTRACTOR FURNISHED CONTRACTOR INSTALLED			
A1110	MODULAR HEADWALL SYSTEM	GFCI - CONTRACTOR FURNISHED CONTRACTOR INSTALLED	
A1111	HEADWALL MONITOR	GFCI - CONTRACTOR FURNISHED CONTRACTOR INSTALLED	
A1201	Ceiling Mounted	GFCI - CONTRACTOR FURNISHED CONTRACTOR INSTALLED	
A5030	SHOWER STALL BENCH	GFCI - CONTRACTOR FURNISHED CONTRACTOR INSTALLED	
A5030B	FOLDING SHOWER SEAT	GFCI - CONTRACTOR FURNISHED CONTRACTOR INSTALLED	PROVIDE IN WALL CARRIER FOR SECURE ATTACHMENT
GFCI - CONTRACTOR FURNISHED CONTRACTOR INSTALLED			
A5110	24" HORIZONTAL GRAB BAR	GFCI - CONTRACTOR FURNISHED CONTRACTOR INSTALLED	
A5170	WEIGHTED SHOWER CURTAIN AND SWINGING CURTAIN ROD	GFCI - CONTRACTOR FURNISHED CONTRACTOR INSTALLED	
A5180	CURBLE CURTAIN AND CURTAIN TRACK	GFCI - CONTRACTOR FURNISHED CONTRACTOR INSTALLED	
M0515	TELEVISION AND MOUNTING BRACKET	GFCI - CONTRACTOR FURNISHED CONTRACTOR INSTALLED	
P5040	HAND-HELD SHOWER HEAD	GFCI - CONTRACTOR FURNISHED CONTRACTOR INSTALLED	
U0006	RECESSED DIALYSIS BOX, SEE PLUMBING DRAWINGS	GFCI - CONTRACTOR FURNISHED CONTRACTOR INSTALLED	
GFCI - GOVERNMENT FURNISHED AND CONTRACTOR ROUGH-IN			
A5175	SOAP DISH	GFCI - GOVERNMENT FURNISHED AND CONTRACTOR ROUGH-IN	
M1802	MOUNTED CHARTING WORKSTATION	GFCI - GOVERNMENT FURNISHED AND CONTRACTOR ROUGH-IN	
R4650	FOLLETT SYMPHONY PLUS 12 SERIES ICE AND WATER DISPENSER	GFCI - GOVERNMENT FURNISHED AND CONTRACTOR ROUGH-IN	WATER FILTER ALSO TO BE PROVIDED
GFCI - GOVERNMENT FURNISHED AND INSTALLED			
GFI - GOVERNMENT FURNISHED AND INSTALLED			
A1015	DESK TELEPHONE	GFI - GOVERNMENT FURNISHED AND INSTALLED	
A1030	HALF HEIGHT PERSONAL LOCKER	GFI - GOVERNMENT FURNISHED AND INSTALLED	
A1067	WALL MIRROR	GFI - GOVERNMENT FURNISHED AND INSTALLED	
A5077	SOAP DISPENSER	GFI - GOVERNMENT FURNISHED AND INSTALLED	
A5090	NAPKIN DISPENSER	GFI - GOVERNMENT FURNISHED AND INSTALLED	
A5107	GLOVE DISPENSER	GFI - GOVERNMENT FURNISHED AND INSTALLED	
A5108	SHARPS WASTE UNIT	GFI - GOVERNMENT FURNISHED AND INSTALLED	
E0945	MOBILE COMPUTER CART	GFI - GOVERNMENT FURNISHED AND INSTALLED	
E0954	CRASH CART WITH LIFEPAK	GFI - GOVERNMENT FURNISHED AND INSTALLED	
F0205	SIDE CHAIR WITH ARMS	GFI - GOVERNMENT FURNISHED AND INSTALLED	
F0220	CHAIR, CONFERENCE	GFI - GOVERNMENT FURNISHED AND INSTALLED	
F0225	CHAIR, DINING	GFI - GOVERNMENT FURNISHED AND INSTALLED	
F0265	RECLINING CHAIR	GFI - GOVERNMENT FURNISHED AND INSTALLED	
F0275	CHAIR, OFFICE HIGH-BACK	GFI - GOVERNMENT FURNISHED AND INSTALLED	
F0280	DESK CHAIR - LOW BACK	GFI - GOVERNMENT FURNISHED AND INSTALLED	
F0305	CHAIR, WAITING ROOM	GFI - GOVERNMENT FURNISHED AND INSTALLED	
F0355	FOOTSTOOL	GFI - GOVERNMENT FURNISHED AND INSTALLED	

EQUIPMENT SCHEDULE

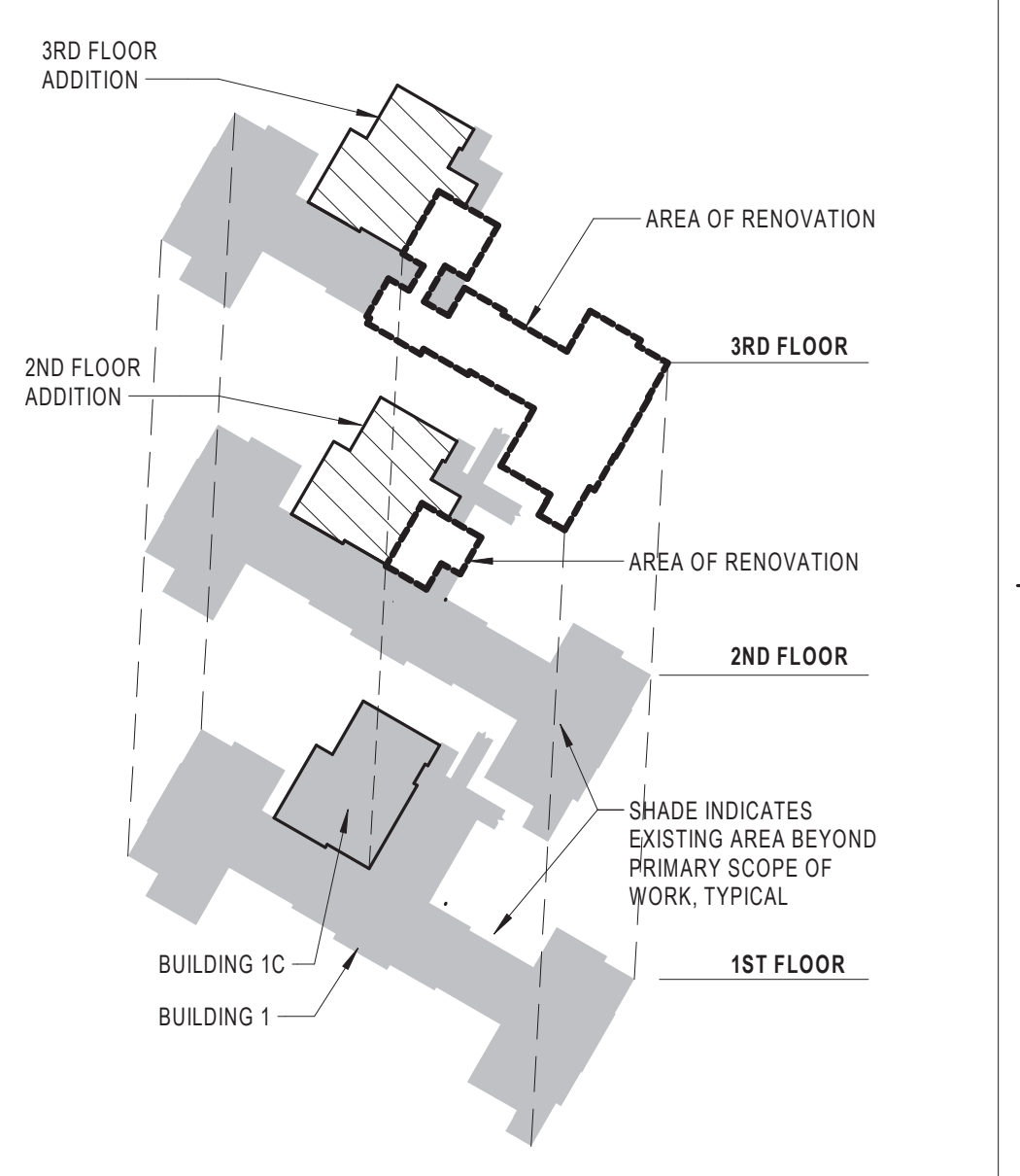
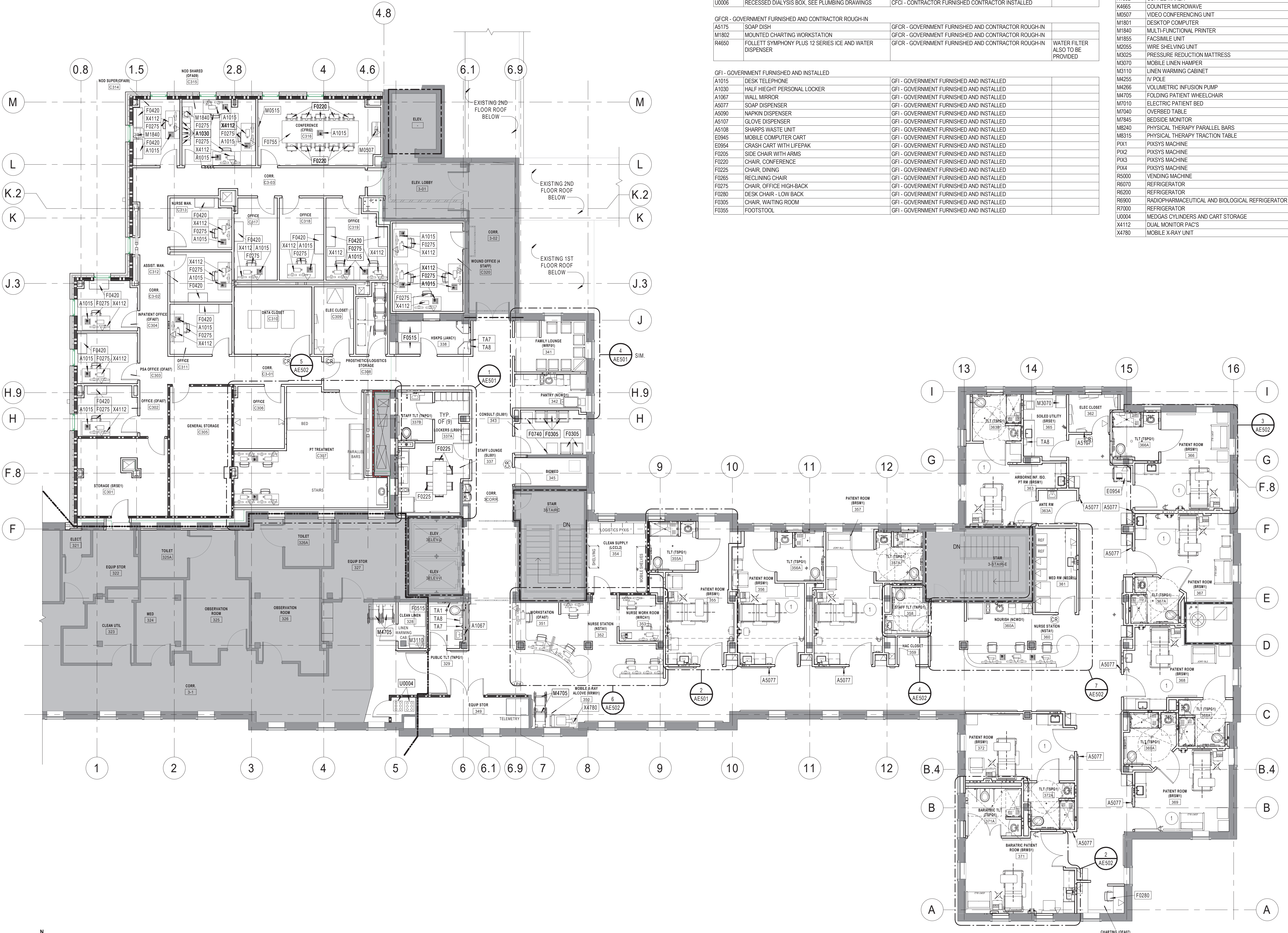
JSNMARK	DESCRIPTION	FFE FURNISHED	COMMENTS
F0375	SOFA	GFI - GOVERNMENT FURNISHED AND INSTALLED	
F0400	BEDSIDE CABINET	GFI - GOVERNMENT FURNISHED AND INSTALLED	
F0420	FILE CABINET	GFI - GOVERNMENT FURNISHED AND INSTALLED	
F0615	LINEN SUPPLY CART	GFI - GOVERNMENT FURNISHED AND INSTALLED	
F0650	48" DESK	GFI - GOVERNMENT FURNISHED AND INSTALLED	
F0740	SIDE TABLE	GFI - GOVERNMENT FURNISHED AND INSTALLED	
F0755	CONFERENCE TABLE	GFI - GOVERNMENT FURNISHED AND INSTALLED	
F0775	WORK TABLE	GFI - GOVERNMENT FURNISHED AND INSTALLED	
F0795	DINING TABLE	GFI - GOVERNMENT FURNISHED AND INSTALLED	
F2017	WASTE BASKET	GFI - GOVERNMENT FURNISHED AND INSTALLED	
F3050	WHITEBOARD	GFI - GOVERNMENT FURNISHED AND INSTALLED	
F3065	PATIENT BOARD	GFI - GOVERNMENT FURNISHED AND INSTALLED	
F3200	WALL CLOCK	GFI - GOVERNMENT FURNISHED AND INSTALLED	
K1552	COFFEE MAKER	GFI - GOVERNMENT FURNISHED AND INSTALLED	
K4665	COUNTER MICROWAVE	GFI - GOVERNMENT FURNISHED AND INSTALLED	
M0507	VIDEO CONFERENCE UNIT	GFI - GOVERNMENT FURNISHED AND INSTALLED	
M1801	DESKTOP COMPUTER	GFI - GOVERNMENT FURNISHED AND INSTALLED	
M1840	MULTI-FUNCTIONAL PRINTER	GFI - GOVERNMENT FURNISHED AND INSTALLED	
M1855	FACSIMILE UNIT	GFI - GOVERNMENT FURNISHED AND INSTALLED	
M2055	WIRE SHELVING UNIT	GFI - GOVERNMENT FURNISHED AND INSTALLED	
M3025	PRESSURE REDUCTION MATTRESS	GFI - GOVERNMENT FURNISHED AND INSTALLED	
M3070	MOBILE LINEN HAMPER	GFI - GOVERNMENT FURNISHED AND INSTALLED	
M3110	LINEN WARMING CABINET	GFI - GOVERNMENT FURNISHED AND INSTALLED	
M4255	IV POLE	GFI - GOVERNMENT FURNISHED AND INSTALLED	
M4265	VOLUMETRIC INFUSION PUMP	GFI - GOVERNMENT FURNISHED AND INSTALLED	
M4705	FOLDING PATIENT WHEELCHAIR	GFI - GOVERNMENT FURNISHED AND INSTALLED	
M7010	ELECTRIC PATIENT BED	GFI - GOVERNMENT FURNISHED AND INSTALLED	
M7040	OVERSED TABLE	GFI - GOVERNMENT FURNISHED AND INSTALLED	
M795	BEDSIDE MONITOR	GFI - GOVERNMENT FURNISHED AND INSTALLED	
M8240	PHYSICAL THERAPY PARALLEL BARS	GFI - GOVERNMENT FURNISHED AND INSTALLED	
M8315	PHYSICAL THERAPY TRACTION TABLE	GFI - GOVERNMENT FURNISHED AND INSTALLED	
P1X1	P1XSYS MACHINE	GFI - GOVERNMENT FURNISHED AND INSTALLED	
P1X2	P1XSYS MACHINE	GFI - GOVERNMENT FURNISHED AND INSTALLED	
P1X3	P1XSYS MACHINE	GFI - GOVERNMENT FURNISHED AND INSTALLED	
P1X4	P1XSYS MACHINE	GFI - GOVERNMENT FURNISHED AND INSTALLED	
R5000	VENDING MACHINE	GFI - GOVERNMENT FURNISHED AND INSTALLED	
R6070	REFRIGERATOR	GFI - GOVERNMENT FURNISHED AND INSTALLED	
R6200	REFRIGERATOR	GFI - GOVERNMENT FURNISHED AND INSTALLED	
R6500	RADIO-PHARMACEUTICAL AND BIOLOGICAL REFRIGERATOR	GFI - GOVERNMENT FURNISHED AND INSTALLED	
R7000	REFRIGERATOR	GFI - GOVERNMENT FURNISHED AND INSTALLED	
U0004	MED GAS CYLINDERS AND CART STORAGE	GFI - GOVERNMENT FURNISHED AND INSTALLED	
X4112	DUAL MONITOR PACS	GFI - GOVERNMENT FURNISHED AND INSTALLED	
X4780	MOBILE X-RAY UNIT	GFI - GOVERNMENT FURNISHED AND INSTALLED	

EQUIPMENT GENERAL NOTES

- A PROVIDE BLOCKING IN WALLS TO ACCOMMODATE EQUIPMENT, FURNISHINGS, TECHNOLOGY AND WALL MOUNTED ACCESSORIES.
- B COORDINATE EQUIPMENT LOCATION, WATER REQUIREMENTS, POWER AND DATA WITH EQUIPMENT AND ENGINEERING DRAWINGS.
- C FOR ITEMS TAGGED WITH 'TA', REFER TO TOILET ACCESSORY SCHEDULE A501.
- D FOR ADDITIONAL INFORMATION, REFER TO ENLARGED PLANS AS NOTED.

EQUIPMENT PLAN NOTES

- 1 SEE ENLARGED PATIENT ROOM PLAN 2AE502 FOR TYPICAL INFORMATION ON DIMENSIONS, FINISHES, AND EQUIPMENT.



3RD FLOOR EQUIPMENT PLAN - ADDITION
SCALE: 1/8" = 1'-0"

KEYPLAN ISOMETRIC
SCALE: 1/4" = 100'-0"

CONSULTANT
 Consultant:
 CMTA CONSULTING ENGINEERS
 10411 MEETING STREET
 PROSPECT, KY 40059
 (502)-326-3085

ARCHITECT/ENGINEER OF RECORD
 A/E:
 GUIDON DESIGN INC.
 1221 N PENNSYLVANIA STREET
 INDIANAPOLIS, IN 46202
 (317)-800-6388

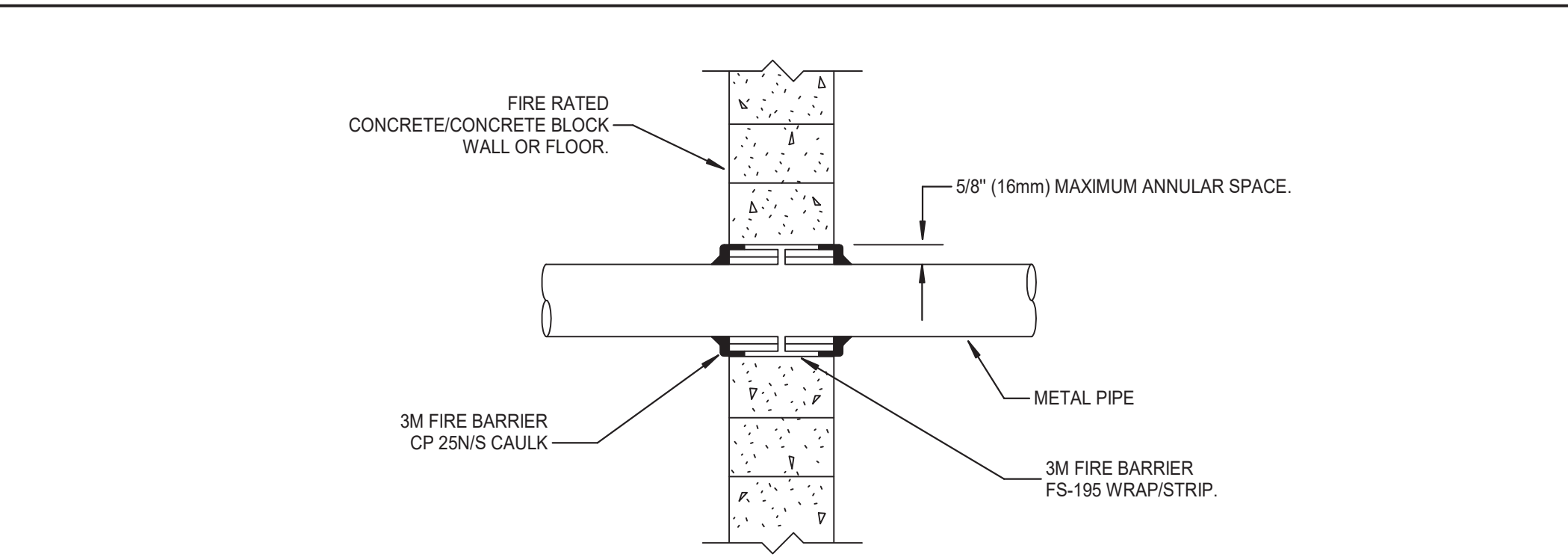
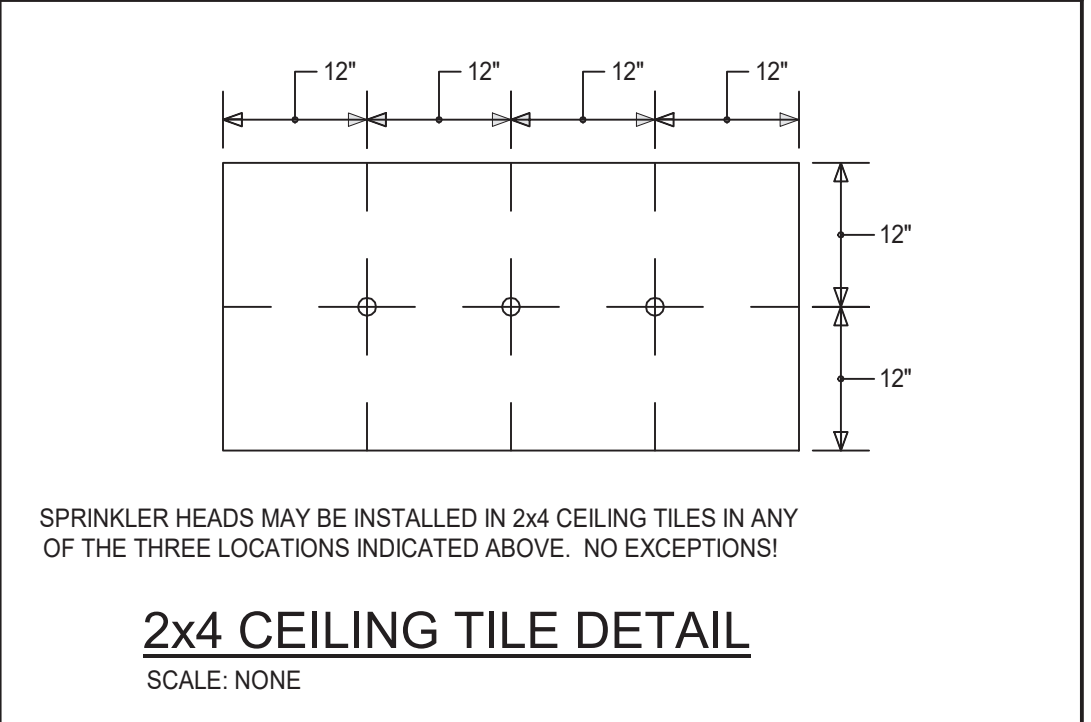
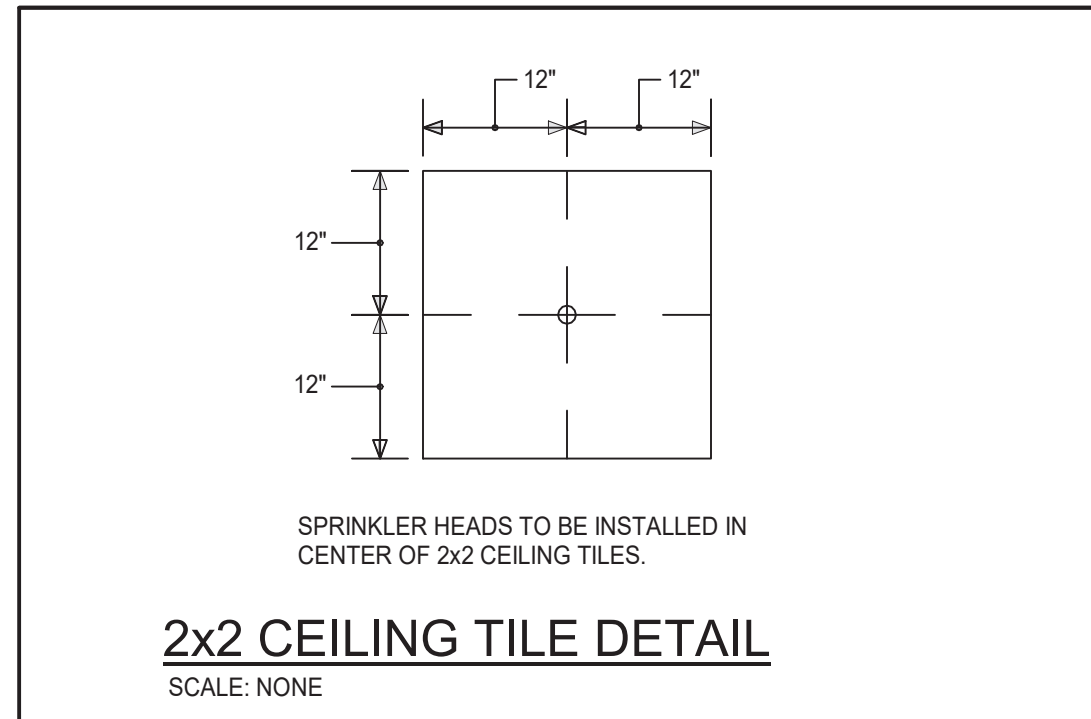


Office of
 Construction
 and Facilities
 Management
 VA U.S. Department
 of Veterans Affairs

Drawing Title
3RD FLOOR EQUIPMENT PLAN
 Approved:

Phase
BID DOCUMENTS

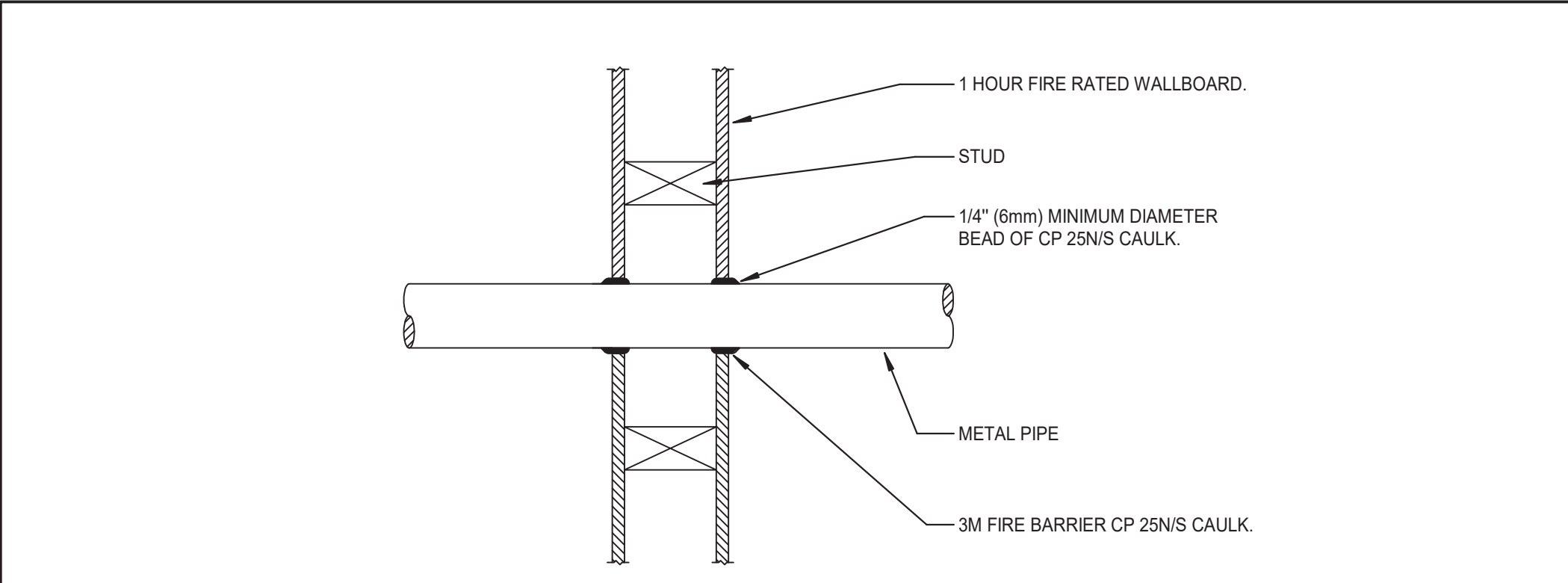
Project Title
**VA WICHITA - MED/SURG BEDS
 FOR PATIENT PRIVACY**
 Location
WICHITA, KANSAS
 Issue Date
 5/22/2020
 Checked
 JDF
 Drawn
 JDJ
 Project Number
589-701
 Building Number
1 & 1C
 Drawing Number
QH102



- NOTES:**
1. THE MAXIMUM ANNULAR SPACE AROUND THE METAL PIPE OR CONDUIT IS 5/8" (16mm). (IF THE ANNULAR SPACE EXCEEDS 5/8" PATCH THE WALL AND PENETRATE WALL AT ANOTHER LOCATION).
 2. WRAP THE 3M MODEL# FS-195 WRAP/STRIP AROUND THE PIPE/CONDUIT, FOIL SIDE OUT, TO FILL THE SPACE BETWEEN THE PIPE/CONDUIT AND THE WALL OPENING. THE 3M MODEL# FS-195 WRAP/STRIP SHOULD BE TIGHTLY SECURED WITH ALUMINUM FOIL TAPE OR STEEL TIE WIRE AND PUSHED INTO THE OPENING UNTIL THE TOP EDGE OF THE WRAP IS FLUSH WITH THE WALL SURFACE. THE IDENTICAL INSTALLATION SHOULD BE INSTALLED ON THE OTHER SIDE OF THE WALL.
 3. USE 3M MODEL# CP 25N/S(NQ SAQ) CAULK TO FILL THE AREA BETWEEN THE FS-195 WRAP/STRIP AND THE EDGES OF THE OPENING AND ANY VOIDS IN THE 3M MODEL# FS-195 WRAP/STRIP. A FILL OF CP 25 CAULK SHOULD COAT ALL EXPOSED EDGES OF THE FS-195 WRAP/STRIP AND COMPLETELY SEAL THE AREA BETWEEN THE FS-195 WRAP/STRIP, THE PIPE/CONDUIT AND THE WALL SURFACE.

PENETRATION FIRESTOP FOR METAL PIPE/CONDUIT THROUGH A CONCRETE WALL
NOT TO SCALE

- FIRE STOPPING NOTES:**
1. FIRE STOPPING IS CRITICAL AND MUST BE ACCOMPLISHED. ALL PIPES MUST BE FIRE STOPPED WHERE THEY PENETRATE FIRE RESISTIVE, FIRE RATED, AND SMOKE RESISTIVE WALLS OR FLOORS. ALL FLOORS CORRIDOR WALLS, STAIR WALLS, MECHANICAL ROOM WALLS, STORAGE ROOM WALLS AND OTHER HAZARDOUS ROOM WALLS ARE ONE HOUR RATED.
 2. A FOUR-HOUR TRAINING SESSION SHALL BE CONDUCTED BY MANUFACTURER OF THE FIRE STOPPING MATERIAL. THIS SHALL BE DONE PRIOR TO THE INSTALLATION OF THE MATERIAL. CONTACT HOSPITAL ENGINEER AND CMTA TO ADVISE OF DATE AND TIME OF THIS MEETING.
 3. ALL PENETRATIONS WILL BE REVIEWED BY THE HOSPITAL ENGINEER OR CMTA. PRIOR TO INSPECTION, ALL CEILING TILES BENEATH THE PENETRATIONS SHALL BE REMOVED BY THE CONTRACTOR.



- NOTES :**
1. FORCE THE 3M MODEL# CP 25N/S CAULK INTO THE ANNULAR SPACE TO THE MAXIMUM EXTENT POSSIBLE. FLUSH WITH THE EXTERIOR OF THE PENETRATION SURFACE.
 2. FINISH CAULKING WITH A 1/4" (6mm) MINIMUM BEAD OF CP 25N/S CAULK APPLIED TO THE PERIMETER OF THE CONDUIT/PIPE AT ITS EGRESS FROM THE WALL.
 3. THE MAXIMUM ANNULAR SPACE IS NOT TO EXCEED 3/16" (5mm). (IF IT DOES PATCH WALL AND PENETRATE WALL AT ANOTHER LOCATION).
 4. INSTALL THE 3M FIRESTOP ON BOTH SIDES OF THE WALL.

PENETRATION FIRESTOP FOR METAL PIPE/CONDUIT THROUGH ONE HOUR WALL
NOT TO SCALE

GENERAL NOTES - FIRE PROTECTION

- A. ALL AREAS SHALL BE PROTECTED BY A 100% WET PIPE FIRE SUPPRESSION SYSTEM INSTALLED IN STRICT ACCORDANCE WITH NFPA-13, THE KENTUCKY BUILDING CODES AND THE PROJECT SPECIFICATIONS.
- B. ALL AREAS ARE PRESENTLY PROTECTED BY A 100% WET PIPE FIRE SUPPRESSION SYSTEM. CONTRACTOR SHALL MODIFY THE SYSTEM AS REQUIRED TO MAINTAIN 100% PROTECTION, IN ACCORDANCE WITH NFPA 13, KENTUCKY BUILDING CODE AND SPECIFICATIONS.
- C. THE SUCCESSFUL FIRE PROTECTION CONTRACTOR SHALL OBTAIN AND UTILIZE THE ARCHITECTURAL REFLECTED CEILING PLAN FOR LAYING OUT THE SPRINKLER HEADS. THE REFLECTED CEILING PLANS SHOWN ARE TO COORDINATE CEILING TYPES AND LOCATIONS. REFER TO THE MECHANICAL AND ELECTRICAL DRAWINGS FOR CEILING DEVICE LOCATIONS. REFER TO THE SPECIFICATIONS FOR COORDINATION DRAWING REQUIREMENTS.
- D. INSTALL HEADS IN CENTER OF 2'x2' TILES. INSTALL HEADS ON 1/4 POINTS OF THE 4' DIMENSION AND CENTER OF THE 2' DIMENSION IN 2'x4' TILES. DO NOT MOUNT HEADS IN CENTER OF 2'x4' TILE IF IT IS SCORED TO LOOK LIKE TWO 2'x2' TILES.
- E. ALL SPRINKLER HEADS SHALL BE "SEMI-RECESSED", QUICK RESPONSE SPRINKLER HEADS (UNLESS OTHERWISE NOTED ON THE PLANS). HEADS SHALL BE FED FROM A RETURN BEND ARRANGEMENT.
- F. UTILIZE UPRIGHT AND/OR WALL-MOUNTED TYPE SPRINKLER HEADS IN AREAS WITHOUT CEILINGS.
- G. THE FIRE PROTECTION CONTRACTOR SHALL PERFORM HIS OWN FLOW TEST PRIOR TO SUBMITTING SHOP DRAWINGS.
- H. REFER TO A COMPLETE SET OF DOCUMENTS (ARCHITECTURAL, STRUCTURAL, MECHANICAL AND ELECTRICAL PLANS AND SPECIFICATIONS) FOR COORDINATION OF TRADES, ROOMS, STRUCTURE AND EQUIPMENT. HVAC DUCTWORK MAINS SHALL BE INSTALLED PRIOR TO FIRE PROTECTION PIPING. PROVIDE DRAIN VALVES IN THE FIRE PROTECTION SYSTEM WHERE REQUIRED TO COMPLETELY DRAIN THE SYSTEM.
- I. REFER TO THE SPECIFICATIONS FOR SPRINKLER HEAD TYPES.
- J. PROVIDE ALL REQUIRED DRAIN PIPING TO TEST FLOW SWITCHES. DISCHARGE DRAIN PIPING TO OUTDOORS OR A FLOOR DRAIN.
- K. SIZE ALL FIRE PROTECTION PIPING IN ACCORDANCE WITH NFPA 13. PIPE SIZING SHALL BE ACCOMPLISHED USING HYDRAULIC CALCULATIONS.
- L. SUBMIT HYDRAULIC CALCULATIONS AND SYSTEMS DESIGN FOR REVIEW TO THE MIE ENGINEER.
- M. THE CONTRACTOR SHALL EXERCISE EXTREME CARE IN THE COURSE OF THEIR WORK SO AS TO ENSURE THAT THEY DO NOT INTERRUPT ANY EXISTING SERVICE. FOR SAFETY PURPOSES, PAY PARTICULAR ATTENTION TO THIS PRECAUTION RELATIVE TO NATURAL GAS AND ELECTRICAL LINES. VERIFY THE LOCATION, SIZE, TYPE, ETC., OF EACH UNDERGROUND OR OVERHEAD UTILITY. ALL WORK SHALL BE PERFORMED IN ACCORD WITH ALL FEDERAL, STATE AND/OR LOCAL RULES, REGULATIONS, STANDARD AND SAFETY REQUIREMENTS.
- N. WHERE WORK IS REQUIRED ABOVE EXISTING LAY-IN, PLASTER OR GYPSUM BOARD CEILINGS, THE CONTRACTOR SHALL BE RESPONSIBLE FOR REMOVAL AND REINSTALLATION OR REPLACEMENT, IF DAMAGED) OF ALL CEILING OR TILE AND GRID MEMBERS NECESSARY TO PERFORM HIS WORK. NEW TILE AND GRID SHALL MATCH THE SURROUNDING AREAS. ALL PATCHING WORK SHALL MATCH ADJACENT SURFACES.
- O. ALL NEW WORK SHALL BE HUNG FROM STRUCTURE, NOT FROM THE WORK OF OTHER TRADES, WHETHER EXISTING OR NEW.
- P. COORDINATE ALL WORK WITH PROJECT PHASING REQUIREMENTS.
- Q. PATCH, REPAIR AND PAINT OR PROVIDE WALL COVERING FOR (TO OWNER'S STANDARDS) EXISTING WALLS, CEILINGS, ETC., THAT ARE TO REMAIN IF DAMAGED DURING CONSTRUCTION. REPAIRS SHALL MATCH ADJACENT SURFACES TO THE SATISFACTION OF THE ARCHITECT AND OWNER.
- R. OBSERVE ALL APPLICABLE CODES, RULES AND REGULATIONS THAT MAY APPLY TO THE WORK UNDER THIS CONTRACT. (CITY, COUNTY, LOCAL, FEDERAL, MUNICIPALITY, UTILITY COMPANY, COMMONWEALTH OF KENTUCKY, ETC.).
- S. CONTRACTOR SHALL BE AWARE OF UNSEEN PLUMBING, HVAC AND ELECTRICAL WORK DURING DEMOLITION. IF ITEMS ARE UNCOVERED DURING DEMOLITION THEN VERIFY THE USE OF THE ITEMS AND PLAN AN ALTERNATE ROUTE TO RUN THESE ITEMS. THEN CONTACT THE ENGINEERS TO REVIEW THE ROUTING.
- T. ALL PENETRATIONS OF FIRE AND SMOKE RATED ASSEMBLIES SHALL BE APPROPRIATELY FIRE STOPPED PER AN APPROVED U.L. LISTED STANDARD. CONTRACTOR SHALL PAY PARTICULAR ATTENTION TO INSULATED PIPING PENETRATIONS.
- U. ALL WORK REQUIRING DOWNTIME OF ANY AREA IN THE BUILDING SHALL BE SCHEDULED 2 WEEKS IN ADVANCE, AND SHALL COMPLY WITH INTERIM LIFE SAFETY MEASURES.
- V. WHERE CEILINGS ARE INDICATED ALL SPRINKLER PIPING MUST BE INSTALLED ABOVE CEILINGS. SPRINKLER PIPING MUST BE COORDINATED WITH OTHER TRADES. PIPING MUST BE OFFSET TO AVOID CONFLICTS WITH DUCTWORK, CONDUIT, ALL EQUIPMENT, ETC.
- W. LOCATIONS OF PIPING, DUCTS AND EQUIPMENT ARE APPROXIMATE AND SUBJECT TO MINOR ADJUSTMENTS IN THE FIELD. DO NOT SCALE THE DRAWINGS.
- X. ALL OFFSETS IN DUCTS AND PIPING ARE NOT NECESSARILY SHOWN. PROVIDE ADDITIONAL OFFSETS WHERE NECESSARY.
- Y. COORDINATE ALL HVAC WORK WITH ELECTRICAL, PLUMBING AND OTHER TRADES TO AVOID INTERFERENCE WITH PIPING, DUCTS, CONDUIT AND OTHER EQUIPMENT.
- Z. SEAL AIRTIGHT AROUND ALL DUCTS AND PIPING PENETRATIONS THROUGH WALLS, FLOORS AND ROOF. PROVIDE FIRE STOPPING IN FIRE PARTITION.
- AA. THE CONTRACTOR SHALL RELOCATE OR AVOID ANY EXISTING EQUIPMENT APPURTENANCES, ETC., THAT CONFLICT WITH NEW WORK.
- BB. VALVES, BALANCING DAMPERS OR ANY MECHANICAL/ELECTRICAL ITEM REQUIRING ACCESS SHALL NOT BE LOCATED ABOVE A HARD CEILING. IF THIS IS NOT POSSIBLE, THEN AN APPROPRIATELY SIZED ACCESS DOOR SHALL BE PLACED UNDER THE ITEM TO ALLOW EASY MAINTENANCE AND ADJUSTMENT. ADDITIONALLY ALL SUCH ITEMS SHALL NOT BE LOCATED AN UNREASONABLE DISTANCE ABOVE THE CEILING. IN GENERAL ALL SUCH ITEMS UNLESS INDICATED OTHERWISE SHALL BE MOUNTED SIX TO TWELVE INCHES ABOVE THE CEILING. IF IN DOUBT, CONTACT ENGINEER PRIOR TO INSTALLING.

PHASING NOTES

- A. THIS PROJECT INTERFACES EXTENSIVELY WITH EXISTING BUILDING SERVICES. IT SHALL BE THE CONTRACTOR'S RESPONSIBILITY TO COORDINATE AND PHASE ALL TIES AND INTERRUPTIONS OF EXISTING SERVICES TO MINIMIZE OR ELIMINATE DOWNTIME. AS AN EXAMPLE, MAIN GAS SERVICE, WATER SERVICE, ELECTRICAL SERVICE, HVAC SERVICES, STEAM GENERATION, ETC. WILL BE AFFECTED AND REPLACED OR MOVED DURING THIS PROJECT. THE CONTRACTOR SHALL INSTALL ALL NEW SERVICES AND EQUIPMENT AND HAVE THEM TESTED AND FULLY AND RELIABLY FUNCTIONAL PRIOR TO INTERRUPTING, RELOCATING OR REMOVING ANY EXISTING SERVICES. IT SHALL BE THE CONTRACTOR'S RESPONSIBILITY TO BARE ANY AND ALL COSTS ASSOCIATED WITH THIS PHASING, INCLUDING TEMPORARY SERVICES, TEMPORARY RELOCATION, PREMIUM TIME WORK, ETC. CONTRACTOR SHALL COORDINATE ALL SAID WORK WITH THE OWNER AND APPLICABLE UTILITIES PER THE CONTRACT DOCUMENTS.

HAZARDOUS MATERIALS NOTES

- A. THE CONTRACTOR IT IS HEREBY ADVISED THAT IS POSSIBLE THAT ASBESTOS AND/OR OTHER HAZARDOUS MATERIALS ARE OR WERE PRESENT IN THIS BUILDING(S). ANY WORKER, OCCUPANT, VISITOR, ETC., WHO ENCOUNTERS ANY MATERIAL OF WHOSE CONTENT THEY ARE NOT CERTAIN SHALL PROMPTLY REPORT THE EXISTENCE AND LOCATION OF THAT MATERIAL TO THE OWNER. FURTHERMORE, THE CONTRACTOR SHALL INSURE THAT NO ONE COMES NEAR TO OR IN CONTACT WITH ANY SUCH MATERIAL OR FUMES THEREFROM UNTIL ITS CONTENT CAN BE ASCERTAINED TO BE NON-HAZARDOUS.
- B. CMTA, INC. HAS NO EXPERTISE IN THE DETERMINATION OF THE PRESENCE OF ANY HAZARDOUS MATERIAL. THEREFORE, NO ATTEMPT HAS BEEN MADE BY CMTA TO IDENTIFY THE EXISTENCE OR LOCATION OF ANY SUCH HAZARDOUS MATERIAL. FURTHERMORE, CMTA NOR ANY AFFILIATE HEREOF WILL NOT OFFER OR MAKE ANY RECOMMENDATIONS RELATIVE TO THE REMOVAL, HANDLING OR DISPOSAL OF SUCH MATERIAL.
- C. IF THE WORK WHICH IS TO BE PERFORMED INTERFACES, CONNECTS OR RELATES IN ANY PHYSICAL WAY WITH OR TO EXISTING COMPONENTS WHICH CONTAIN OR BEAR ANY HAZARDOUS MATERIAL, ASBESTOS BEING ONE, THEN IT SHALL BE THE CONTRACTOR'S SOLE RESPONSIBILITY TO CONTACT THE OWNER AND SO ADVISE HIM/HER IMMEDIATELY.
- D. THE CONTRACTOR BY EXECUTION OF THE CONTRACT FOR ANY WORK AND/OR BY THE ACCOMPLISHMENT OF ANY WORK THEREBY AGREES TO BRING NO CLAIM RELATIVE TO HAZARDOUS MATERIALS FOR NEGLIGENCE, BREACH OF CONTRACT, INDEMNITY, OR ANY OTHER SUCH ITEM AGAINST CMTA, ITS PRINCIPALS, EMPLOYEES, AGENTS OR CONSULTANTS. ALSO, THE CONTRACTOR FURTHER AGREES TO DEFEND, INDEMNIFY AND HOLD CMTA, ITS PRINCIPALS, EMPLOYEES, AGENTS AND CONSULTANTS HARMLESS FROM ANY SUCH RELATED CLAIMS WHICH MAY BE BROUGHT BY ANY SUBCONTRACTORS, SUPPLIERS OR ANY OTHER THIRD PARTIES.
- E. THE CONTRACTOR IS DIRECTED TO THE SPECIFICATIONS FOR FURTHER INFORMATION.

ABBREVIATIONS

ADJ	ADJUSTABLE
AFB	ABOVE FINISHED FLOOR
AHJ	AUTHORITY HAVING JURISDICTION
ANSI	AMERICAN NATIONAL STANDARD INSTITUTE
CLG	CEILING
CLR	CLEAR
DN	DOWN
ENGR	ENGINEER
EQ	EQUAL
ETR	EXISTING TO REMAIN
EXT	EXTERIOR
FVC	FIRE VALVE CABINET
FL	FLOOR
FLA	FULL LOAD AMPS
FOB	FLAT ON BOTTOM
FOT	FLAT ON TOP
FPC	FIRE PROTECTION CONTRACTOR
FT	FEET OR FOOT
FUT	FUTURE
GA	GAGE/GAUGE
GAL	GALLON (-S)
GC	GENERAL CONTRACTOR
HORIZ	HORIZONTAL
ID	I (-IDENTIFICATION, -INSIDE DIAMETER, -INSIDE DIMENSION)
IN	INCH (-ES)
INT	INTER (-IOR, -ERVAL)
IPS	IRON PIPE SIZE
LBS	POUNDS
LF	LINEAR FEET/FOOT
MAX	MAXIMUM
MFG	MANUFACTURER
MIN	MIN (-IMUM, -UTE)
MISC	MISCELLANEOUS
MTG	MOUNTING
N/A	NOT APPLICABLE
NC	NOISE CRITERIA OR NORMALLY CLOSED
NIC	NOT IN CONTRACT
NO	NORMALLY OPEN OR NUMBER
NTS	NOT TO SCALE
OC	ON CENTER
OD	OUTSIDE DI (-AMETER, -MENSION)
CFCI	CONTRACTOR FURNISHED, CONTRACTOR INSTALLED
OFCI	OWNER FURNISHED, CONTRACTOR INSTALLED
OFOI	OWNER FURNISHED, OWNER INSTALLED
PC	PLUMBING CONTRACTOR
PLBG	PLUMBING
PRV	PRESSURE REDUCING VALVE (STEAM, WATER, GAS)
PSF	POUNDS PER SQUARE FOOT
PSI	POUNDS PER SQUARE INCH
PSIG	PPSI GAUGE
SQ FT	SQUARE FEET OR FOOT
TBD	TO BE DETERMINED

ABBREVIATIONS (CONTINUED)

TE	TOP ELEVATION
TYP	TYPICAL
UNO	UNLESS NOTED OTHERWISE
WT	WEIGHT
W/	WITH
W/O	WITHOUT
%	PERCENT
ℓ	CENTERLINE

GENERAL SYMBOLS

#	TAGGED NOTE DESIGNATOR
△	REVISION TRIANGLE
ROOM NAME (REV)	ROOM TAG
THE XXXX-E DISTANCE XXXX	EQUIPMENT TAG
⊙	POINT OF CONNECTION / CONNECT TO EXISTING
⊛	POINT OF DEMOLITION

MECHANICAL PIPING LEGEND

—○—	PIPE ELBOW TURNING UP
—○—	PIPE ELBOW TURNING DOWN
—○—	PIPE TEE; CONNECTION ON TOP
—○—	PIPE TEE; CONNECTION ON BOTTOM
— —	PIPE CAP
—FP—	FIRE PROTECTION PIPING
---D(XXX)---	PIPING TO BE DEMOLISHED - (XXX) DENOTES SYSTEM
—(XXX)—	EXISTING PIPING - (XXX) DENOTES SYSTEM
—A(XXX)—	ABANDONED IN PLACE PIPING - (XXX) DENOTES SYSTEM
⊥	STRAINER
⊥	MANUAL ISOLATION VALVE
⊥	GLOBE VALVE
⊥	OS&Y (GATE) VALVE
⊥	PRESSURE REDUCING VALVE (STEAM, GAS, WATER, ETC.)
⊥	CHECK VALVE
⊥	DOUBLE CHECK VALVE ASSEMBLY
⊥	FLEXIBLE PIPE CONNECTION
⊥	PIPING UNION
⊥	FLOW SWITCH
⊥	PRESSURE SWITCH
⊥	TAMPER SWITCH
⊥	PETE'S PLUG; TEMPERATURE/PRESSURE PORT
⊥	SEMI-RECESSED SPRINKLER HEAD WITH REMOVABLE ESCUTCHEON PLATE
⊥	UPRIGHT TYPE SPRINKLER HEAD
⊥	SIDEWALL TYPE SPRINKLER HEAD

FULLY SPRINKLERED

Revisions:	Date:
------------	-------

CONSULTANT
 Consultant:
 CMTA CONSULTING ENGINEERS, INC
 10411 MEETING STREET
 PROSPECT, KY 40059
 (502)326-3085

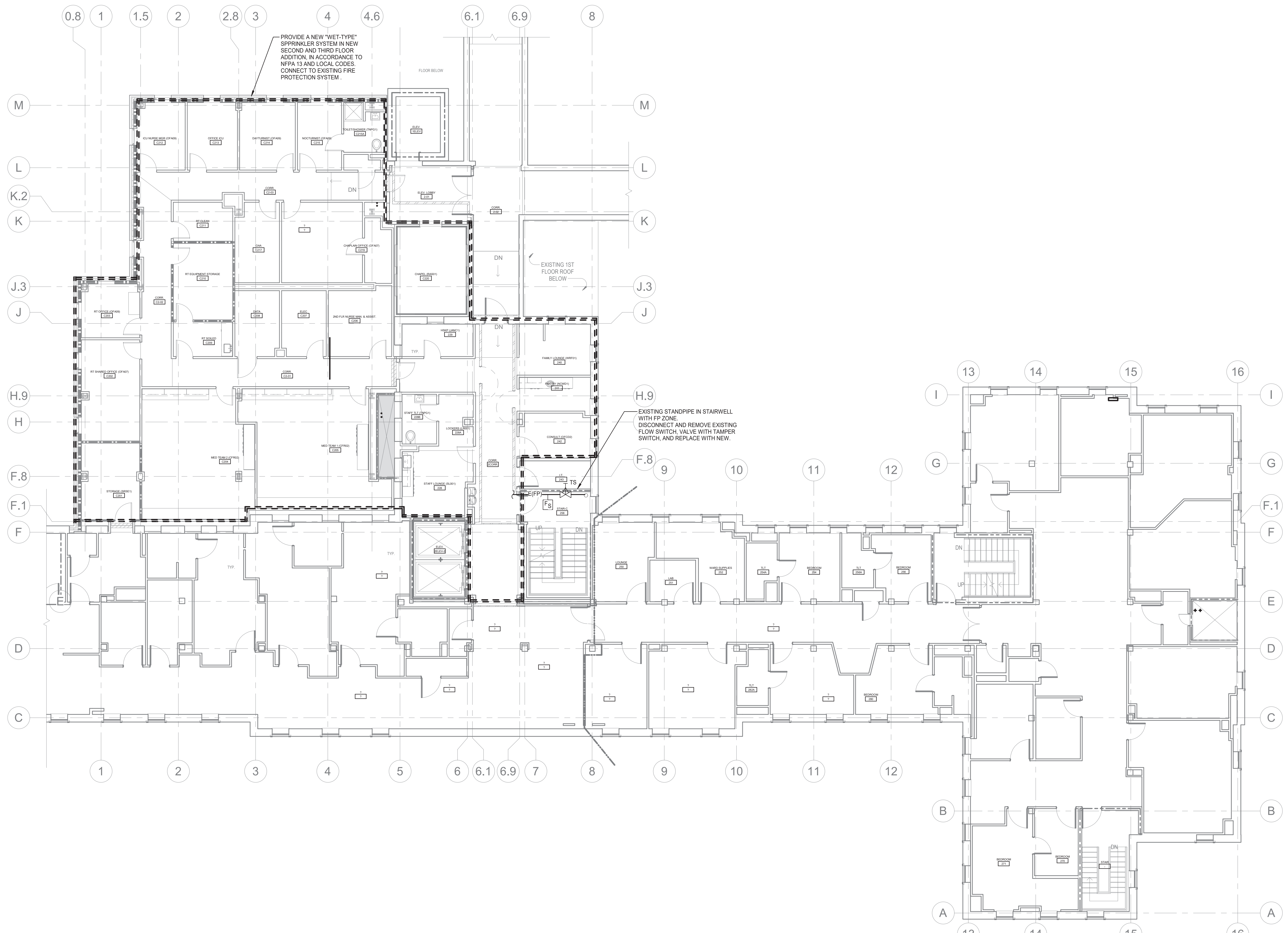
ARCHITECT/ENGINEER OF RECORD
 A/E:
 GUIDON DESIGN INC.
 1221 N PENNSYLVANIA STREET
 INDIANAPOLIS, IN 46202
 (502)326-3085

Office of Construction and Facilities Management
 VA U.S. Department of Veterans Affairs

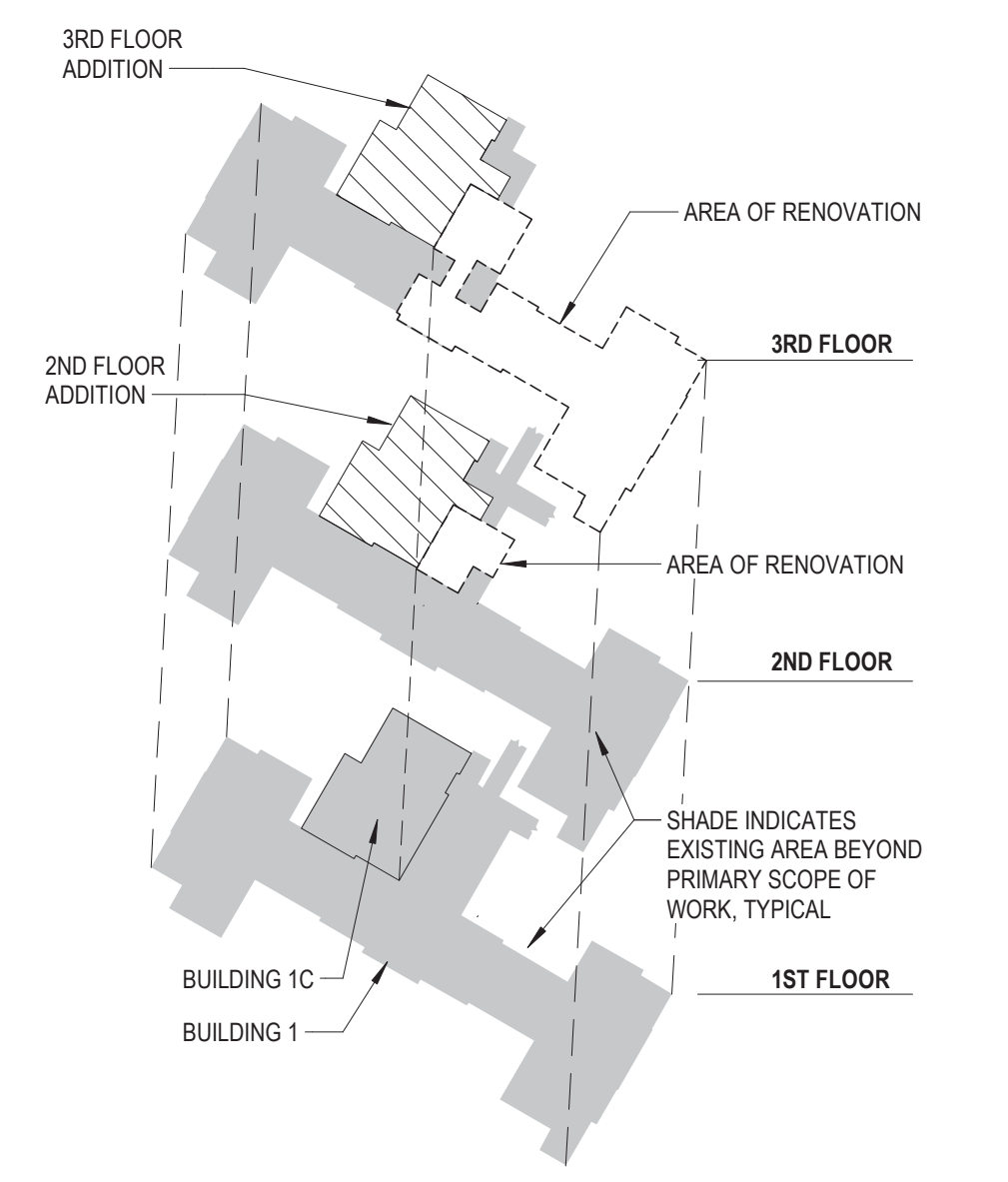
Drawing Title
FIRE SUPPRESSION LEGEND
 Approved:

Phase
BID DOCUMENTS

Project Title
VA WICHITA - MED/SURG BEDS FOR PATIENT PRIVACY
 Location
WICHITA, KANSAS
 Issue Date
 05/22/2020
 Checked
 Drawn
 Project Number
 589-701
 Building Number
 1 & 1C
 Drawing Number
 FA001



SECOND FLOOR FIRE PROTECTION PLAN
 SCALE: 1/8" = 1'-0"
 0 2 4 8 16 24 32 1/8" = 1'-0"



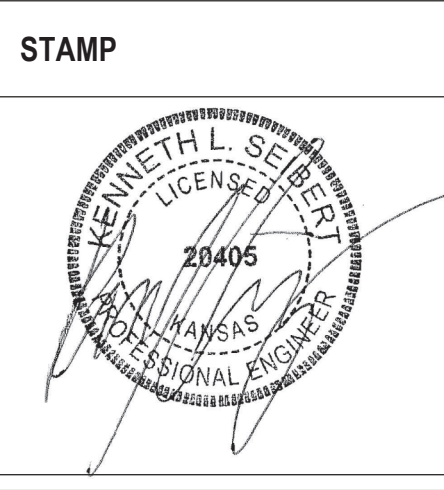
KEYPLAN
 SCALE: NONE

FULLY SPRINKLERED

Revisions:	Date:

CONSULTANT
 Consultant:
 CMTA CONSULTING ENGINEERS, INC.
 10411 MEETING STREET
 PROSPECT, KY 40059
 (502)326-3085

ARCHITECT/ENGINEER OF RECORD
 A/E:
 GUIDON DESIGN INC.
 1221 N PENNSYLVANIA STREET
 INDIANAPOLIS, IN 46202
 (502)326-3085



Office of
 Construction
 and Facilities
 Management

Drawing Title
SECOND FLOOR FIRE PROTECTION PLAN

Approved: _____

Phase
BID DOCUMENTS

Project Title
VA WICHITA - MED/SURG BEDS FOR PATIENT PRIVACY

Location
WICHITA, KANSAS

Issue Date
 05/22/2020

Checked _____

Drawn _____

Project Number
 589-701

Building Number
 1 & 1C

Drawing Number
FA102

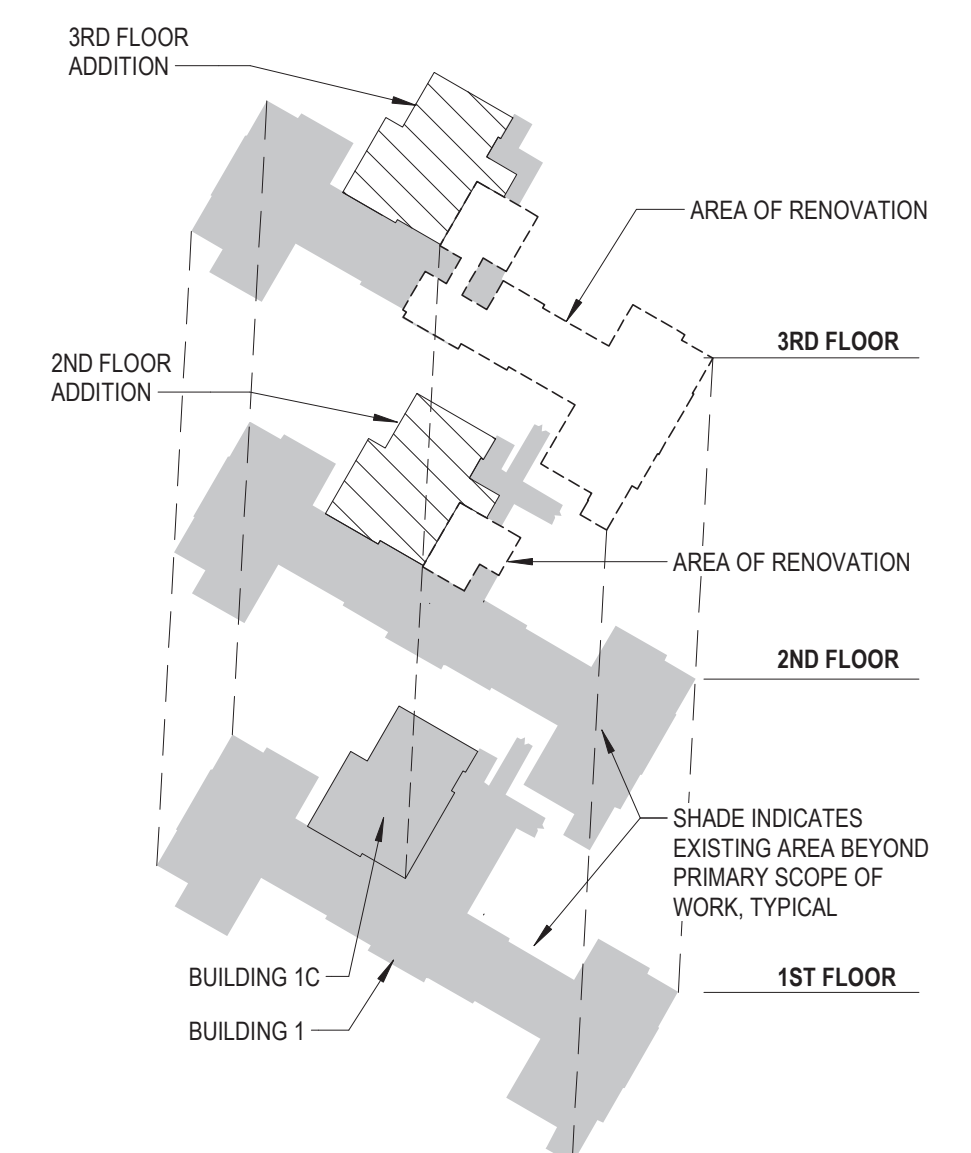
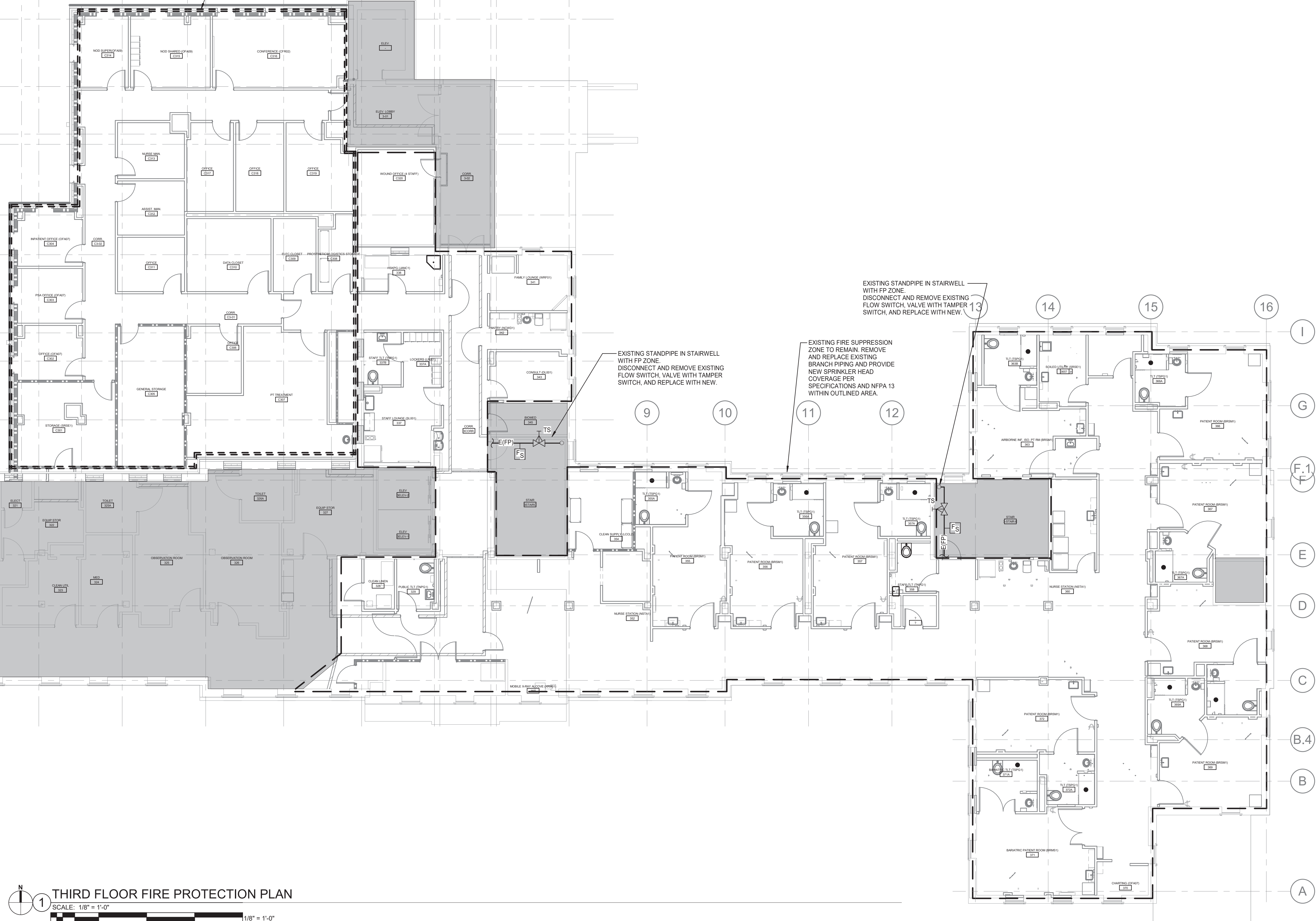
0.8 1 1.5 2 2.8 3 4 4.6 4.8 5 (6.7) (6.7) 8

PROVIDE A NEW "WET-TYPE" SPRINKLER SYSTEM IN NEW SECOND AND THIRD FLOOR ADDITION, IN ACCORDANCE TO NFPA 13 AND LOCAL CODES. CONNECT TO EXISTING FIRE PROTECTION SYSTEM.

EXISTING STANDPIPE IN STAIRWELL WITH FP ZONE. DISCONNECT AND REMOVE EXISTING FLOW SWITCH, VALVE WITH TAMPER SWITCH, AND REPLACE WITH NEW.

EXISTING STANDPIPE IN STAIRWELL WITH FP ZONE. DISCONNECT AND REMOVE EXISTING FLOW SWITCH, VALVE WITH TAMPER SWITCH, AND REPLACE WITH NEW.

EXISTING FIRE SUPPRESSION ZONE TO REMAIN. REMOVE AND REPLACE EXISTING BRANCH PIPING AND PROVIDE NEW SPRINKLER HEAD COVERAGE PER SPECIFICATIONS AND NFPA 13 WITHIN OUTLINED AREA.



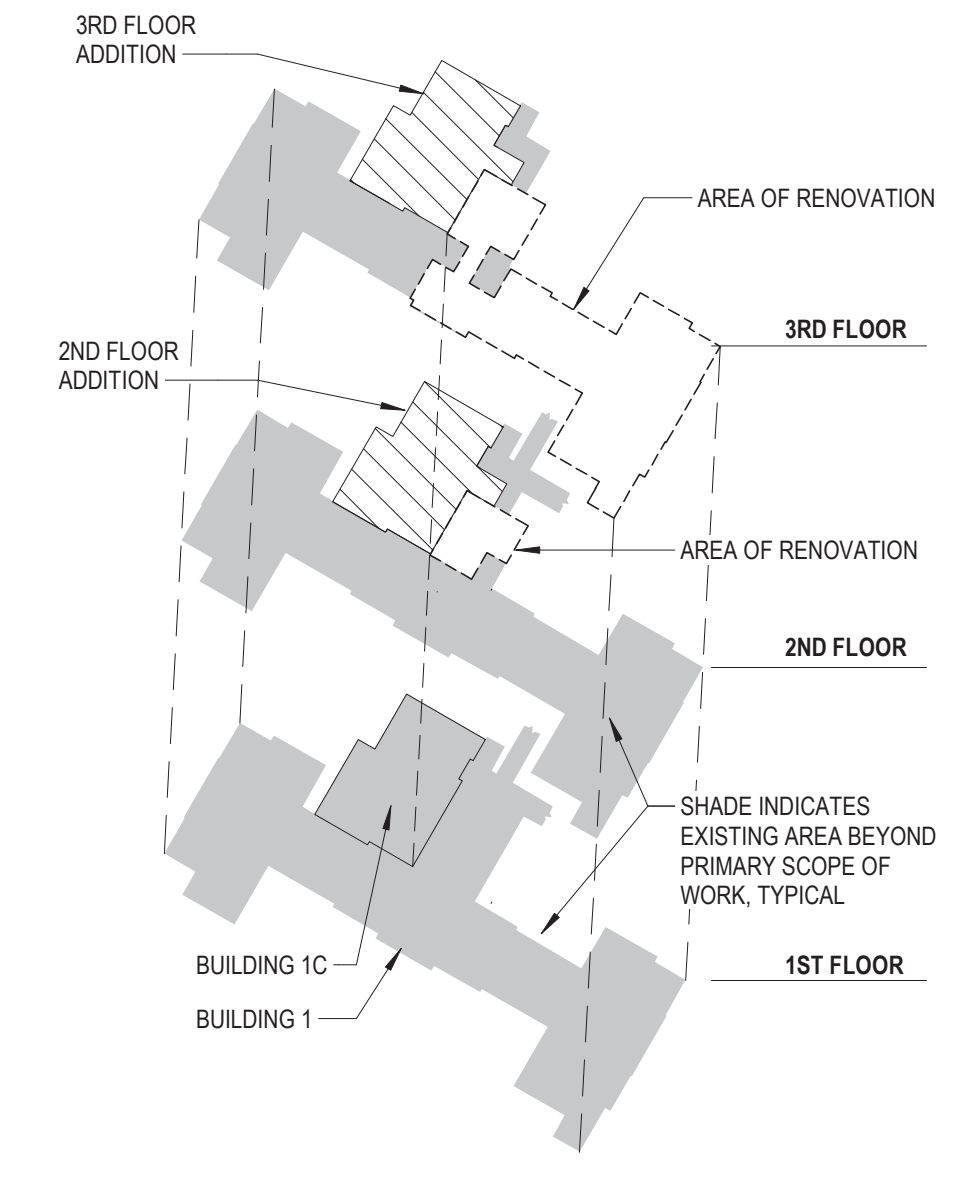
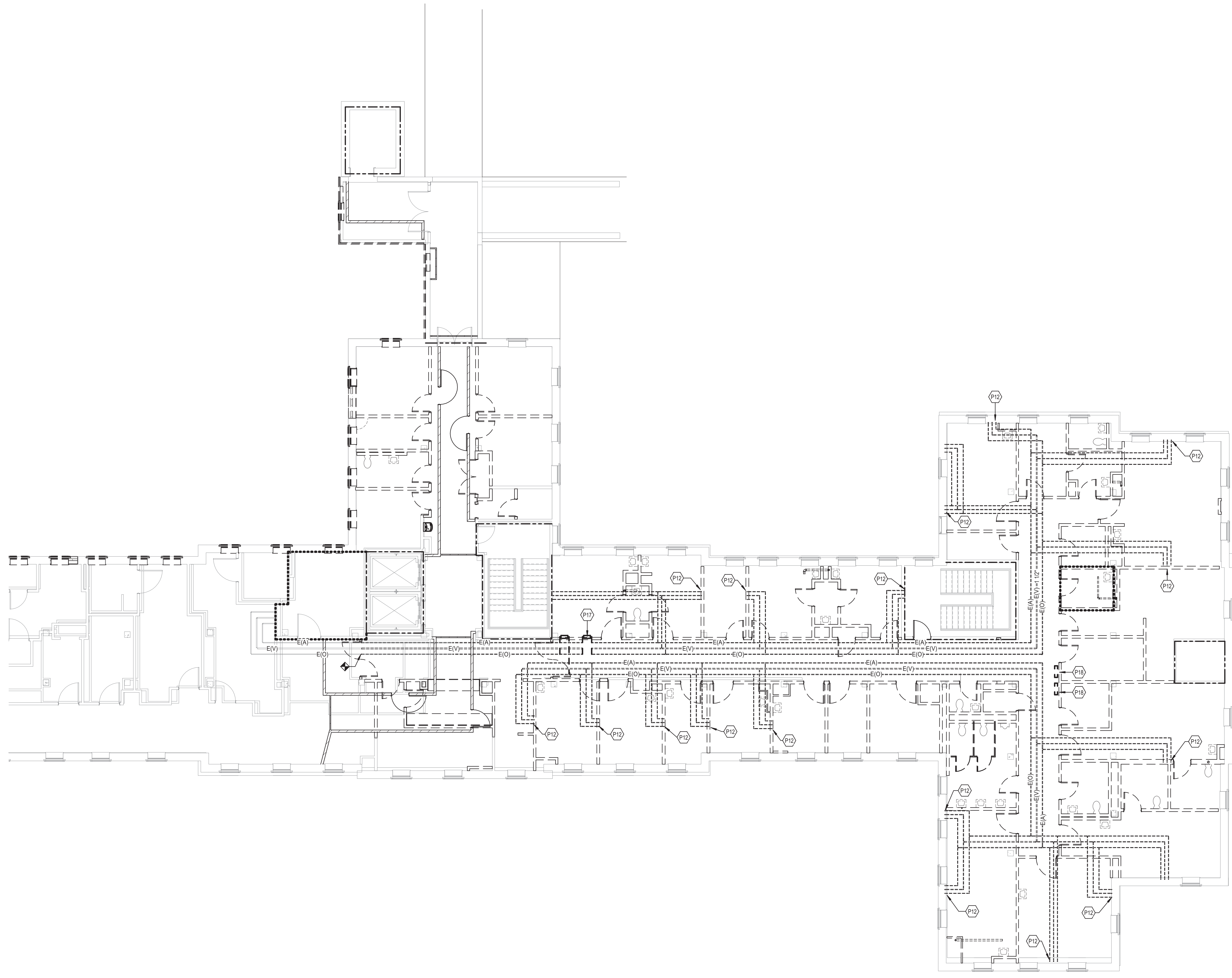
1 THIRD FLOOR FIRE PROTECTION PLAN
SCALE: 1/8" = 1'-0"

KEYPLAN
SCALE: NONE

FULLY SPRINKLERED

Revisions: _____ Date: _____	CONSULTANT Consultant: CMTA CONSULTING ENGINEERS, INC. 10411 MEETING STREET PROSPECT, KY 40059 (502)326-3085	ARCHITECT/ENGINEER OF RECORD A/E: GUIDON DESIGN INC. 1221 N PENNSYLVANIA STREET INDIANAPOLIS, IN 46202 (502)326-3085	STAMP 	Office of Construction and Facilities Management VA U.S. Department of Veterans Affairs	Drawing Title THIRD FLOOR FIRE PROTECTION PLAN Approved: _____	Phase BID DOCUMENTS	Project Title VA WICHITA - MED/SURG BEDS FOR PATIENT PRIVACY	Project Number 589-701 Building Number 1 & 1C	
			U.S. Department of Veterans Affairs		Location WICHITA, KANSAS	Issue Date 05/22/2020	Checked _____	Drawn _____	
							Drawing Number FA103		

TAGGED NOTES	
P12	DISCONNECT AND REMOVE EXISTING MEDICAL GAS OUTLETS AND RELATED PIPING COMPLETELY.
P17	DISCONNECT AND REMOVE EXISTING SHUT-OFF VALVE BOX AND ASSOCIATED PIPING WITHIN NORTH ZONE MEDICAL GAS SYSTEM.
P18	DISCONNECT AND REMOVE EXISTING LINE PRESSURE ALARM PANEL.



THIRD FLOOR PLAN - MEDICAL GAS DEMOLITION
 1 SCALE: 1/8" = 1'-0"
 0 2' 4' 8' 16' 24' 32' 1/8" = 1'-0"

KEYPLAN
 SCALE: NONE

FULLY SPRINKLERED

Revisions: _____ Date: _____	CONSULTANT Consultant: CMTA CONSULTING ENGINEERS, INC. 10411 MEETING STREET PROSPECT, KY 40059 (502)326-3085	ARCHITECT/ENGINEER OF RECORD A/E: GUIDON DESIGN INC. 1221 N PENNSYLVANIA STREET INDIANAPOLIS, IN 46202 (502)326-3085	STAMP 	Office of Construction and Facilities Management VA U.S. Department of Veterans Affairs	Drawing Title THIRD FLOOR MEDICAL GAS DEMOLITION PLAN Approved: _____	Phase BID DOCUMENTS	Project Title VA WICHITA - MED/SURG BEDS FOR PATIENT PRIVACY	Project Number 589-701
	Location WICHITA, KANSAS	Building Number 1 & 1C	Issue Date 05/22/2020	Checked _____	Drawn _____	Drawing Number MG101		