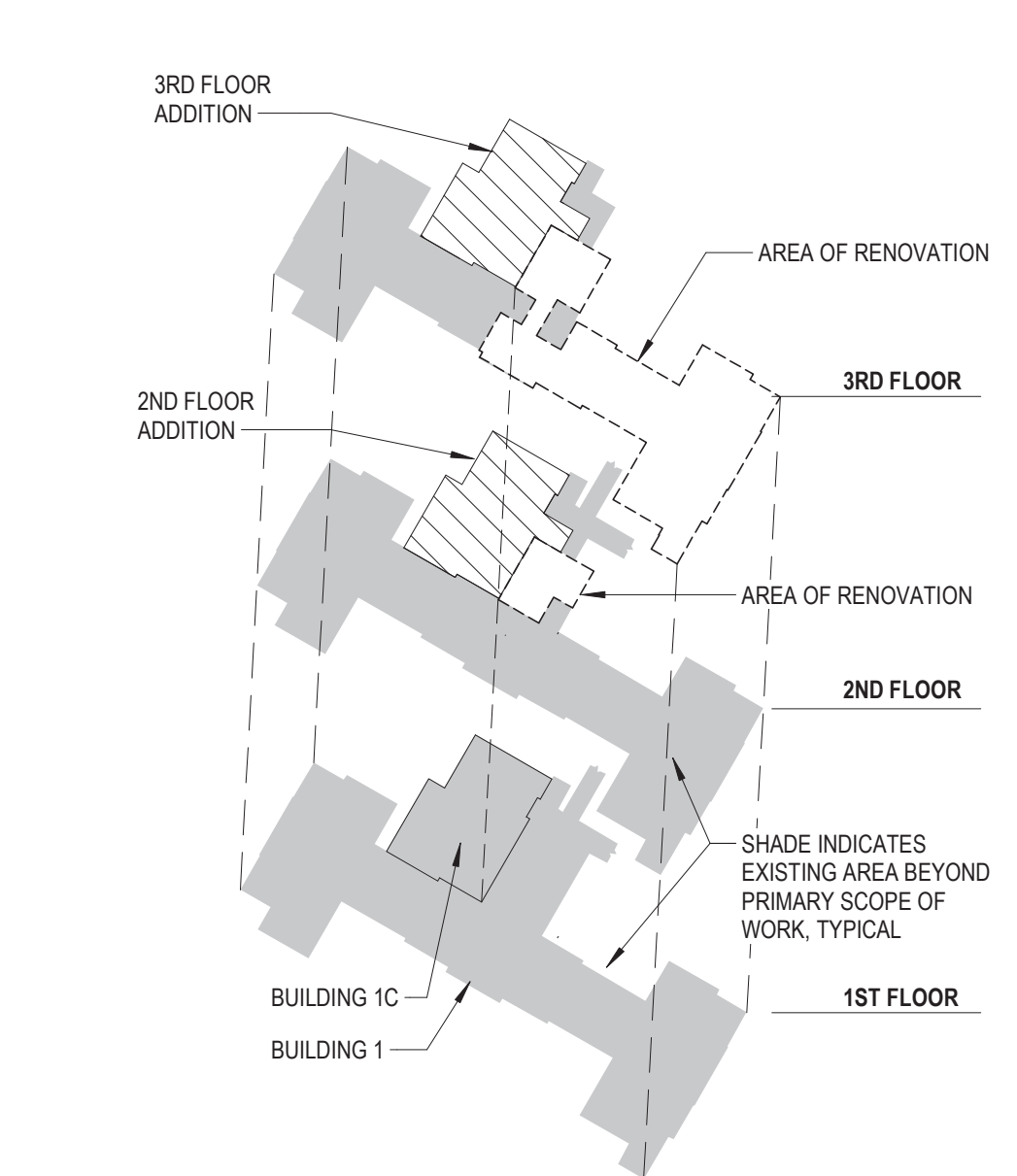
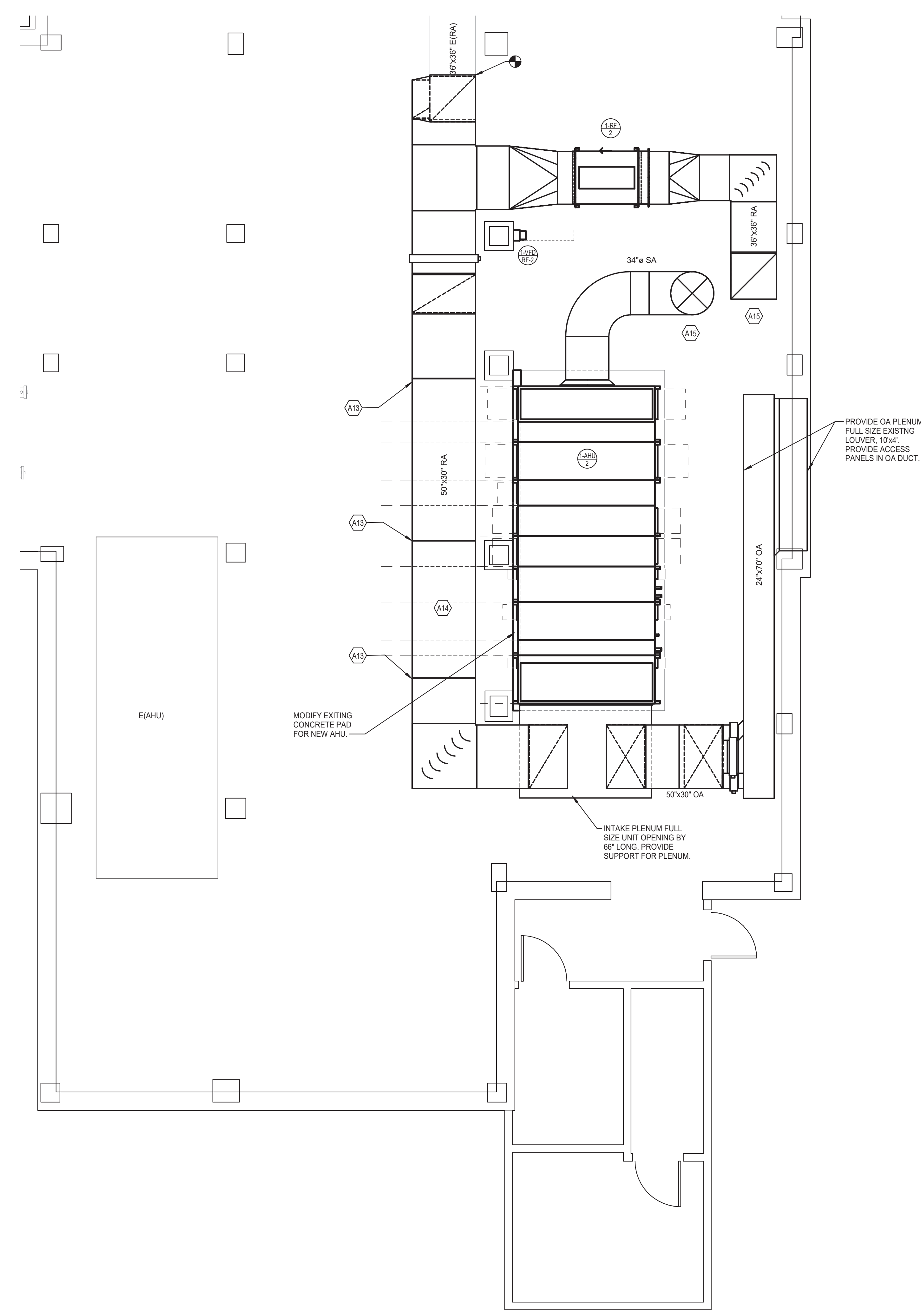


**GENERAL MECHANICAL NOTES:**  
A. REFER TO SHEET MM001 FOR GENERAL NOTES.

TAGGED NOTES	
A13	PROVIDE FLANGED CONNECTION TO ALLOW REMOVAL OF DUCT SECTIONS FOR AHU COIL AND FAN ACCESS.
A14	ROUTE DUCT TIGHT TO STRUCTURE.
A15	ROUTE DUCT UP IN CHASE. PROVIDE FIRE DAMPER AT FLOOR PENETRATION.

BID DEDUCTIVE ALTERNATE 2	
EXISTING AIR HANDLING UNIT AHU-2 AND RETURN FAN RF-2 SHALL REMAIN. EXISTING DUCTWORK, RPPING AND CONTROLS SERVING AHU SHALL REMAIN AS IS. DUCTWORK UP IN SHAFT SHALL REMAIN AS IS. TEMPORARY AHU SHALL BE DELETED.	



1 HVAC PLAN - BASEMENT  
SCALE: 1/4" = 1'-0"  
0 2' 4' 8' 16' 24' 32' 1/8" = 1'-0"

KEYPLAN  
SCALE: NONE

FULLY SPRINKLERED

Revisions: Date:	<b>CONSULTANT</b> Consultant: CMTA CONSULTING ENGINEERS, INC. 10411 MEETING STREET PROSPECT, KY 40059 (502)326-3085	<b>ARCHITECT/ENGINEER OF RECORD</b> A/E: GUIDON DESIGN INC. 1221 N PENNSYLVANIA STREET INDIANAPOLIS, IN 46202 (502)326-3085	STAMP 	Office of Construction and Facilities Management VA U.S. Department of Veterans Affairs	Drawing Title <b>HVAC PLAN - BASEMENT</b> Approved:	Phase <b>BID DOCUMENTS</b>	Project Title <b>VA WICHITA - MED/SURG BEDS          FOR PATIENT PRIVACY</b>	Project Number <b>589-701</b> Building Number <b>1 &amp; 1C</b> Drawing Number <b>MH100</b>
	Location <b>WICHITA, KANSAS</b> Issue Date <b>05/22/2020</b> Checked Drawn							

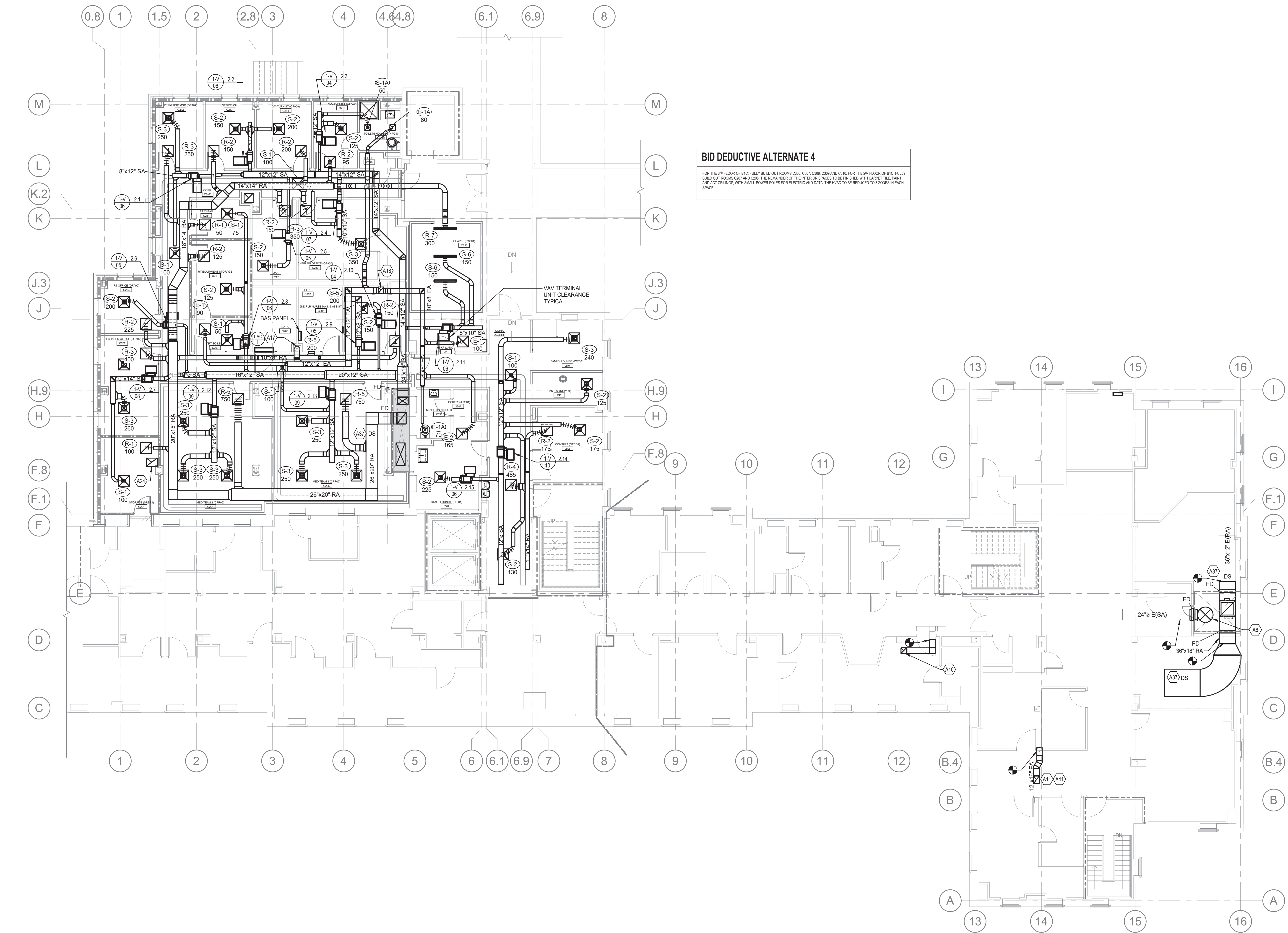
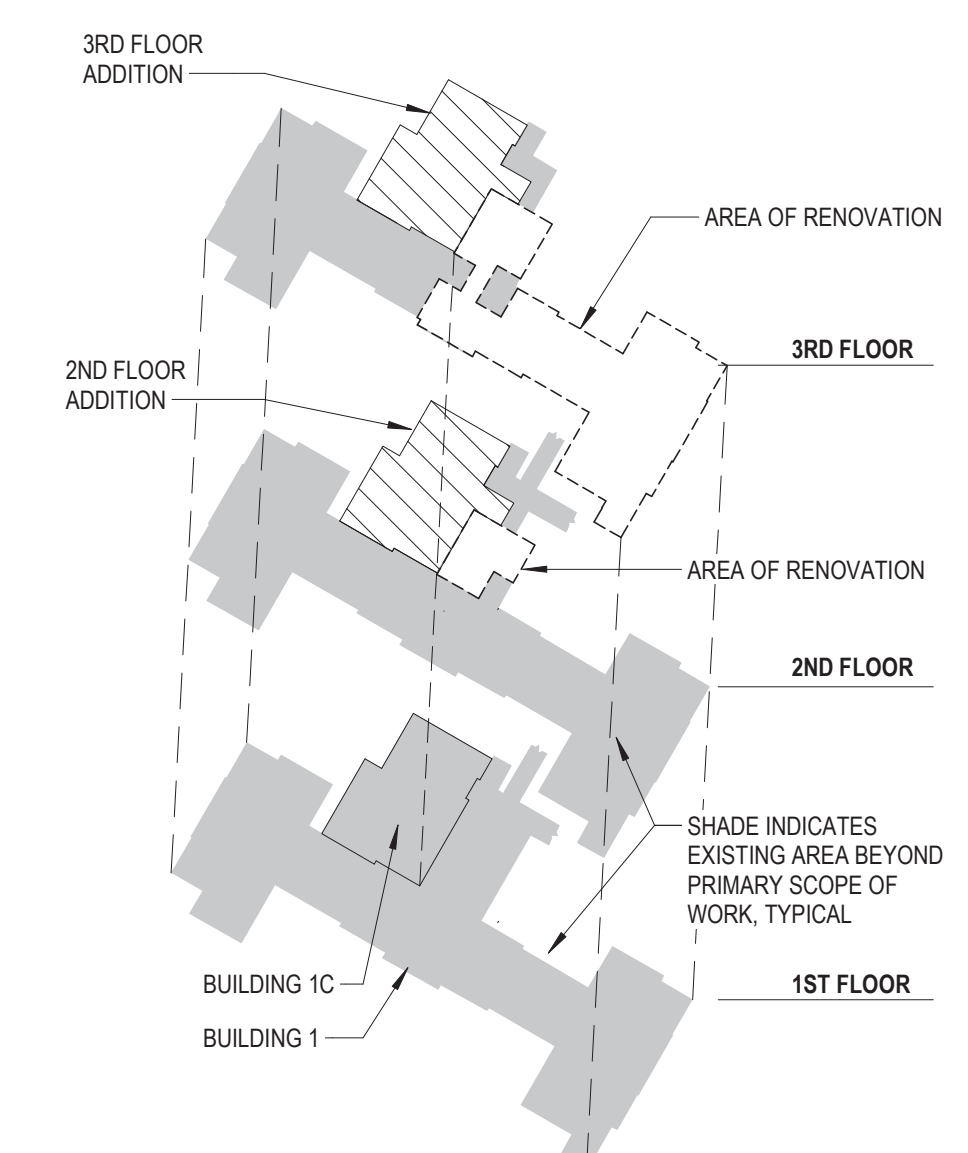
**GENERAL MECHANICAL NOTES:**  
A. REFER TO SHEET MM001 FOR GENERAL NOTES.

**BID DEDUCTIVE ALTERNATE 4**  
FOR THE 3RD FLOOR OF B1C, FULLY BUILD OUT ROOMS C206, C207, C208, C209 AND C210. FOR THE 2ND FLOOR OF B1C, FULLY BUILD OUT ROOMS C207 AND C208. THE REMAINDER OF THE INTERIOR SPACES TO BE FINISHED WITH CARPET TILE, PAINT AND ACCT CEILING WITH SMALL POWER POLES FOR ELECTRIC AND DATA. THE HVAC TO BE REDUCED TO 3 ZONES IN EACH SPACE.

**TAGGED NOTES**

#	DESCRIPTION
A6	3/4" DIA. UP FROM BASEMENT. TRANSITION TO 26" DIA. AFTER SECOND FLOOR TAKEOFF.
A10	CONNECT TO EXISTING 12"x12" EA DUCT. ROUTE 12"x12" EA UP THRU THIRD FLOOR.
A11	CONNECT TO EXISTING 16"x12" ISOLATION EXHAUST DUCT. ROUTE UP THRU THIRD FLOOR.
A17	12" DIA. EA DUCT UP FROM FIRST FLOOR. PROVIDE FIRE DAMPER AT FLOOR PENETRATION.
A18	14"x12" EA DUCT UP TO THIRD FLOOR. PROVIDE FIRE DAMPER AT FLOOR PENETRATION.
A24	24"x18" EX RELIEF DUCT UP FROM FIRST FLOOR. CONTINUE THRU THIRD FLOOR.
A37	DUCT SMOKE DETECTOR
A41	COORDINATE FLOOR PENETRATION WITH STRUCTURE. OFFSET/SHIFT DUCT AS REQUIRED TO PENETRATE BETWEEN STRUCTURAL JOISTS.

GRD RUNOUT SCHEDULE		TERMINAL UNIT DUCT RUNOUT SCHEDULE	
SYMBOL	RUNOUT DUCT SIZE	MARK	INLET DUCT SIZE
S-1	6"Ø	1-CV 08	8"
S-1A	6"Ø	1-CV 10	10"
S-2	8"Ø	1-V 04	4"
S-3	10"Ø	1-V 05	5"
S-4	12"Ø	1-V 06	6"
S-5	12"x8"	1-V 07	7"
S-6	8"Ø	1-V 08	8"
R-1	6"Ø	1-V 09	9"
R-2	8"Ø	1-V 10	10"
R-3	10"Ø	1-V 16	16"
R-4	12"Ø		
R-5	12"x8"		
R-6	14"Ø		
R-7	10"Ø		
E-1	6"Ø		
E-1A	6"Ø		
E-2	8"Ø		
E-2A	8"Ø		
E-4	12"Ø		



**HVAC PLAN - SECOND FLOOR**  
SCALE: 1/8" = 1'-0"  
0 2 4 8 16 24 32 1/8" = 1'-0"

**FULLY SPRINKLERED**

<b>CONSULTANT</b> Consultant: CMTA CONSULTING ENGINEERS, INC. 10411 MEETING STREET PROSPECT, KY 40059 (502)326-3085	<b>ARCHITECT/ENGINEER OF RECORD</b> A/E: GUIDON DESIGN INC. 1221 N PENNSYLVANIA STREET INDIANAPOLIS, IN 46202 (502)326-3085	STAMP 	Office of Construction and Facilities Management VA U.S. Department of Veterans Affairs	Drawing Title <b>HVAC PLAN - SECOND FLOOR</b>	Phase <b>BID DOCUMENTS</b>	Project Title <b>VA WICHITA - MED/SURG BEDS                  FOR PATIENT PRIVACY</b>	Project Number <b>589-701</b>
				Approved:	Location <b>WICHITA, KANSAS</b>	Building Number <b>1 &amp; 1C</b>	
Revisions:	Date:			Issue Date <b>05/22/2020</b>	Checked	Drawn	Drawing Number <b>MH101</b>

C:\Users\jggs\Documents\WVNR19 MECH R18 2 - jggs\SUBMIT.rvt 5/22/2020 10:01:25 AM VA FORM 08-6231

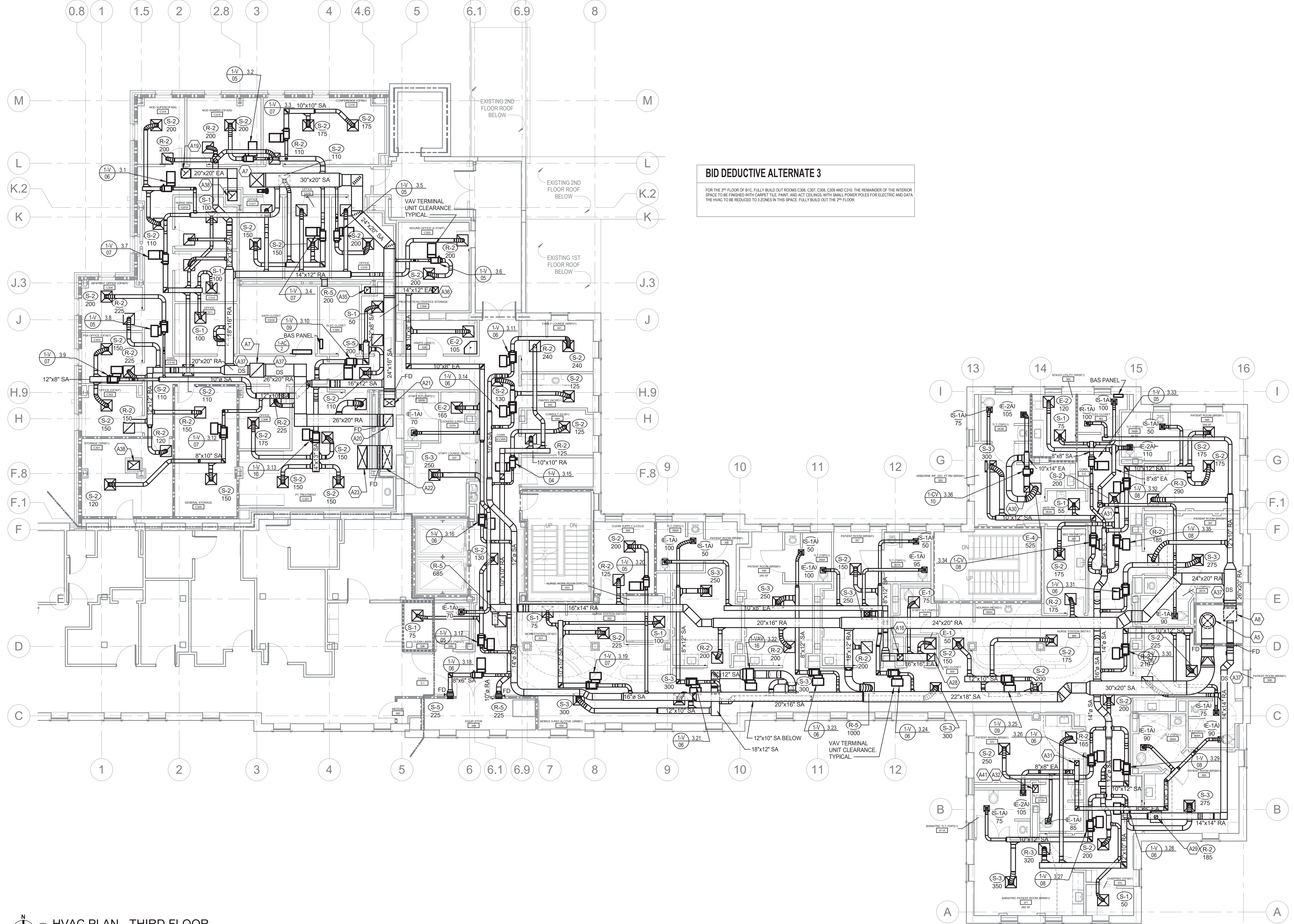
GENERAL MECHANICAL NOTES:  
A. REFER TO SHEET MM001 FOR GENERAL NOTES.

**TAGGED NOTES**

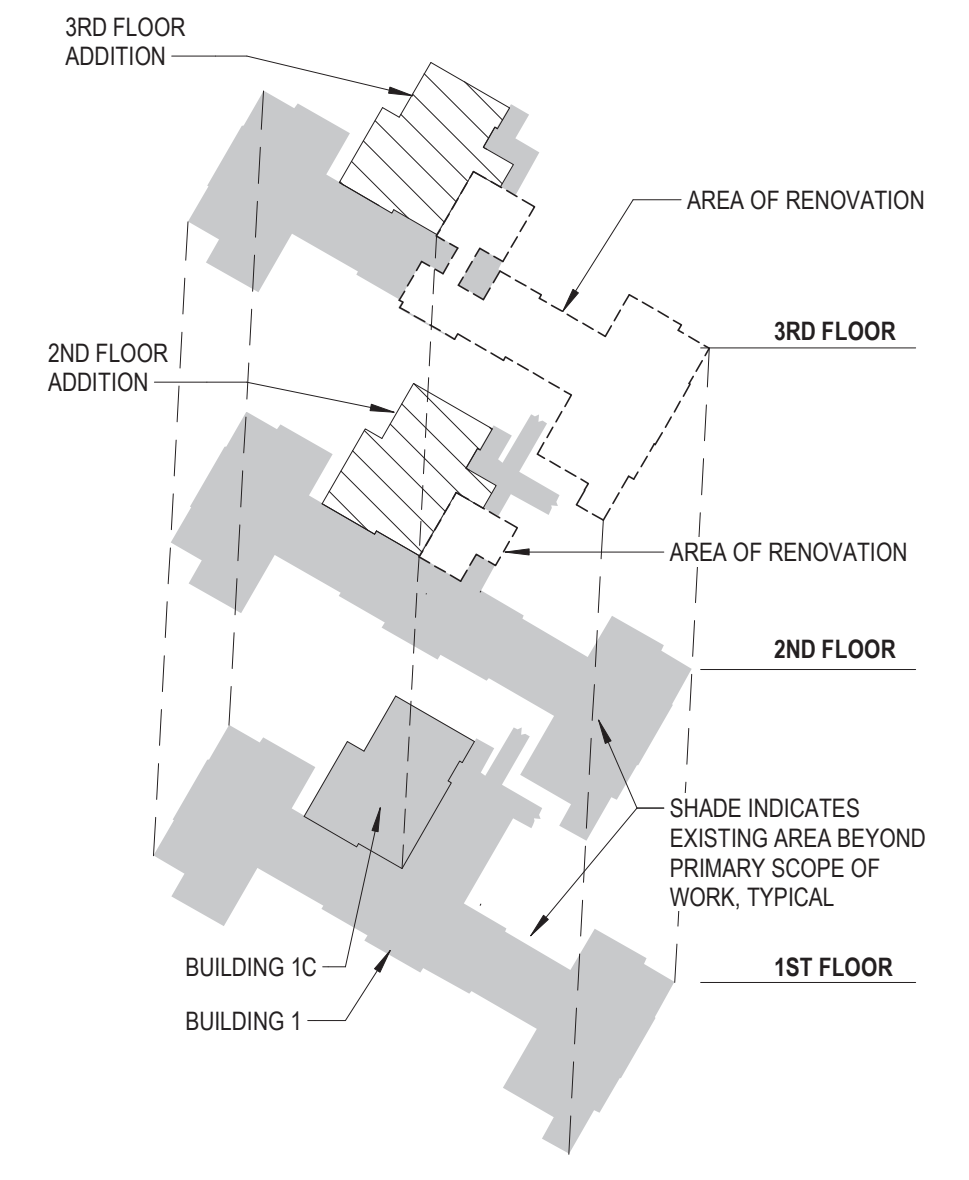
- A5 26" DIA. UP FROM SECOND FLOOR.
- A7 30"x30" RA DUCT UP TO 1-RU-1 ON ROOF.
- A8 28"x28" RA DUCT UP FROM SECOND FLOOR.
- A16 12"x12" EA DUCT UP FROM SECOND FLOOR. CONNECT TO 16"x16" EA.
- A19 20"x20" EA UP. TRANSITION TO 22" DIA. AND ROUTE THRU ROOF.
- A20 26"x20" RA DUCT DN TO SECOND FLOOR.
- A21 24"x16" SA DUCT DN TO SECOND FLOOR.
- A22 50"x20" OA DUCT UP FROM FIRST FLOOR.
- A23 ROUTE 60"x20" OVER AND UP THRU ROOF TO RELOCATED OA INTAKE HOOD.
- A28 16"x16" EA UP TO ATTIC. PROVIDE FIRE DAMPER AT FLOOR PENETRATION.
- A29 ROUTE 8" DIA. RA FROM BOTTOM OF DUCT TO RA GRILLE.
- A30 12"x12" ISOLATION EXHAUST UP TO ATTIC. PROVIDE FIRE DAMPER AT ATTIC FLOOR.
- A31 10"x10" EA UP TO ATTIC. PROVIDE FIRE DAMPER AT ATTIC FLOOR.
- A32 16"x12" ISOLATION EXHAUST UP FROM THIRD FLOOR. PROVIDE FIRE DAMPER AT ATTIC FLOOR.
- A35 14"x12" EA UP FROM SECOND FLOOR. PROVIDE FIRE DAMPER AT FLOOR PENETRATION.
- A36 14"x12" EA UP TO EF ON ROOF.
- A37 DUCT SMOKE DETECTOR
- A38 PROVIDE FIRE DAMPER AT FLOOR PENETRATION. PROVIDE ACCESS PANEL IN WALL FOR ACCESS TO DAMPER.
- A41 COORDINATE FLOOR PENETRATION WITH STRUCTURE. OFFSET/SHIFT DUCT AS REQUIRED TO PENETRATE BETWEEN STRUCTURAL JOISTS.

**BID DEDUCTIVE ALTERNATE 3**

FOR THE 3RD FLOOR OF BIC. FULLY BUILD-OUT ROOMS C200, C207, C208, C209 AND C210. THE REMAINDER OF THE INTERIOR SPACE TO BE FINISHED WITH CABINET TILE, PAINT, AND ACCT CEILING, WITH SMALL POWER POLES FOR ELECTRIC AND DATA. THE HVAC TO BE REDUCED TO ZONES IN THIS SPACE. FULLY BUILD-OUT THE 2ND FLOOR.



GRD RUNOUT SCHEDULE		TERMINAL UNIT DUCT RUNOUT SCHEDULE	
SYMBOL	RUNOUT DUCT SIZE	MARK	INLET DUCT SIZE
S-1	6"Ø	1-CV 08	8"
S-1A	6"Ø	1-CV 10	10"
S-2	8"Ø	1-V 04	4"
S-3	10"Ø	1-V 05	5"
S-4	12"Ø	1-V 06	6"
S-5	12"x8"	1-V 07	7"
S-6	8"Ø	1-V 08	8"
R-1	6"Ø	1-V 10	10"
R-2	8"Ø	1-V 09	9"
R-3	10"Ø	1-V 16	16"
R-4	12"Ø		
R-5	12"x8"		
R-6	14"Ø		
R-7	10"Ø		
E-1	6"Ø		
E-1A	6"Ø		
E-2	8"Ø		
E-2A	8"Ø		
E-4	12"Ø		

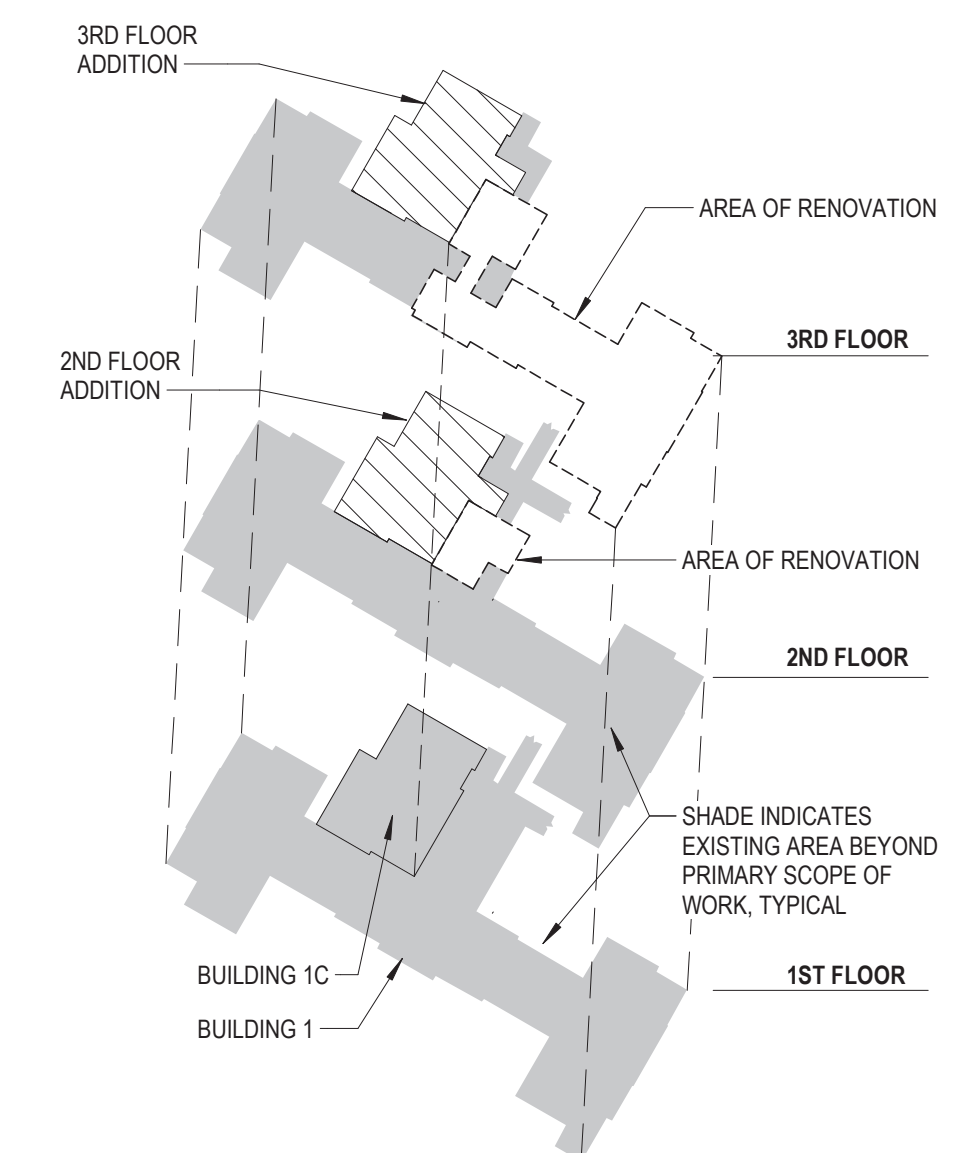
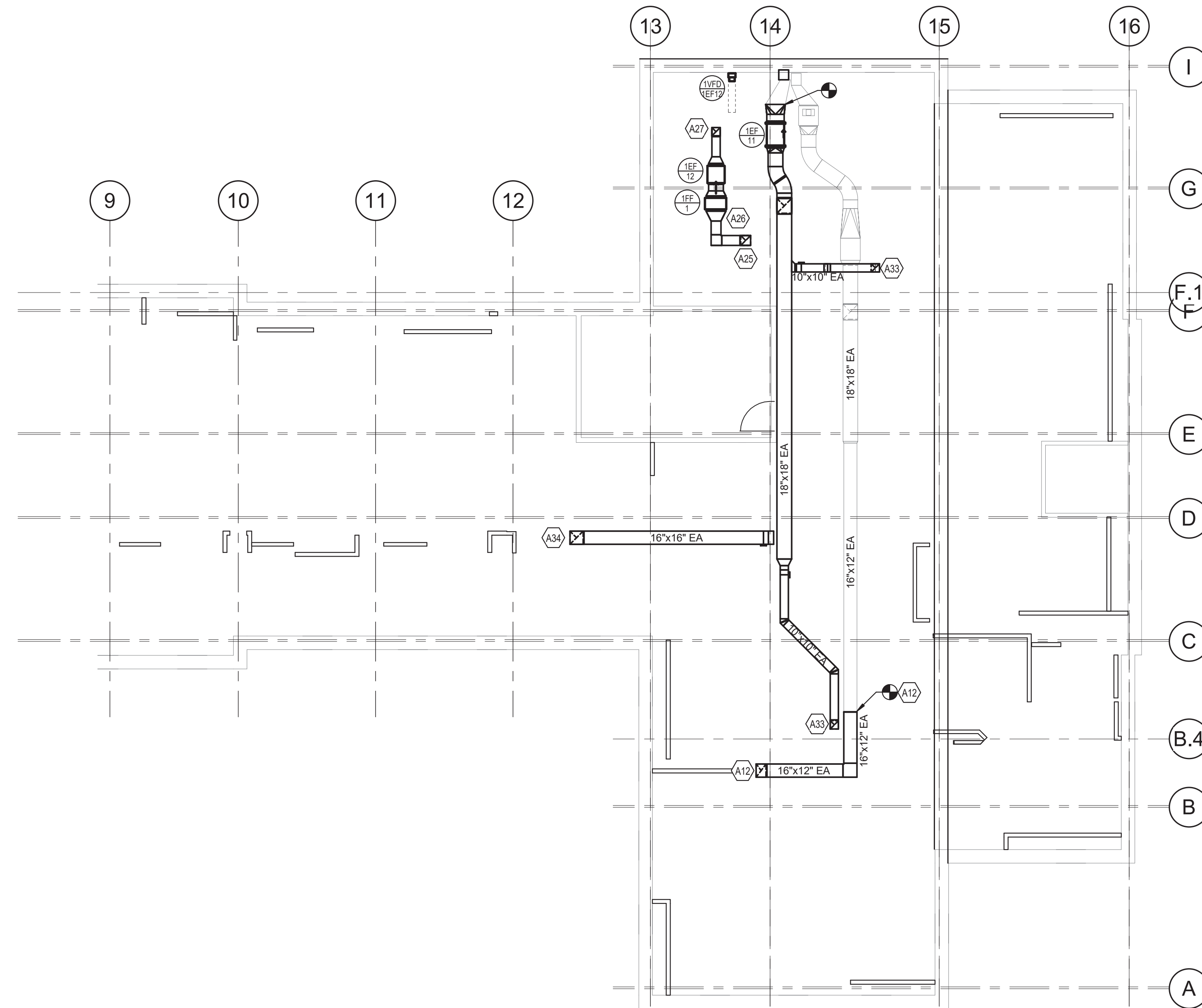


**HVAC PLAN - THIRD FLOOR**  
SCALE: 1/8" = 1'-0"  
1/8" = 1'-0"

<b>CONSULTANT</b> Consultant: CMTA CONSULTING ENGINEERS, INC. 10411 MEETING STREET PROSPECT, KY 40059 (502)326-3085	<b>ARCHITECT/ENGINEER OF RECORD</b> A/E: GUIDON DESIGN INC. 1221 N PENNSYLVANIA STREET INDIANAPOLIS, IN 46202 (502)326-3085	<b>STAMP</b> 	<b>Office of Construction and Facilities Management</b> VA U.S. Department of Veterans Affairs	Drawing Title <b>HVAC PLAN - THIRD FLOOR</b>	Phase <b>BID DOCUMENTS</b>	Project Title <b>VA WICHITA - MED/SURG BEDS FOR PATIENT PRIVACY</b>	Project Number <b>589-701</b>
				Approved:	Location <b>WICHITA, KANSAS</b>	Building Number <b>1 &amp; 1C</b>	
Revisions:	Date:			Issue Date <b>05/22/2020</b>	Checked Drawn	Drawing Number <b>MH102</b>	

**GENERAL MECHANICAL NOTES:**  
 A. REFER TO SHEET MM001 FOR GENERAL NOTES.

TAGGED NOTES	
A12	16"x12" EA UP FROM THIRD FLOOR. EXTEND TO EXISTING.
A25	12"x12" EA ISOLATION DUCT UP FROM SECOND FLOOR. PROVIDE FIRE DAMPER AT FLOOR PENETRATION.
A26	TRANSITION TO HEPA FILTER CASING.
A27	12"x12" EA THRU FLOOR. TERMINATE WITH GOOSENECK.
A33	10"x10" EA UP FROM THIRD FLOOR. PROVIDE FIRE DAMPER AT ATTIC FLOOR.
A34	16"x16" EA DUCT UP FROM THIRD FLOOR. PROVIDE FIRE DAMPER AT ATTIC FLOOR. ROUTE DUCT HIGH IN ATTIC.



**KEYPLAN**  
 SCALE: NONE

**FULLY SPRINKLERED**

Revisions:	Date:

**CONSULTANT**  
 Consultant:  
 CMTA CONSULTING ENGINEERS, INC.  
 10411 MEETING STREET  
 PROSPECT, KY 40059  
 (502)326-3085

**ARCHITECT/ENGINEER OF RECORD**  
 A/E:  
 GUIDON DESIGN INC.  
 1221 N PENNSYLVANIA STREET  
 INDIANAPOLIS, IN 46202  
 (502)326-3085

**STAMP**

**Office of Construction and Facilities Management**  
 VA U.S. Department of Veterans Affairs

Drawing Title  
**HVAC PLAN - ATTIC**  
 Approved:

Phase  
**BID DOCUMENTS**

Project Title  
**VA WICHITA - MED/SURG BEDS FOR PATIENT PRIVACY**  
 Location  
**WICHITA, KANSAS**  
 Issue Date  
 05/22/2020

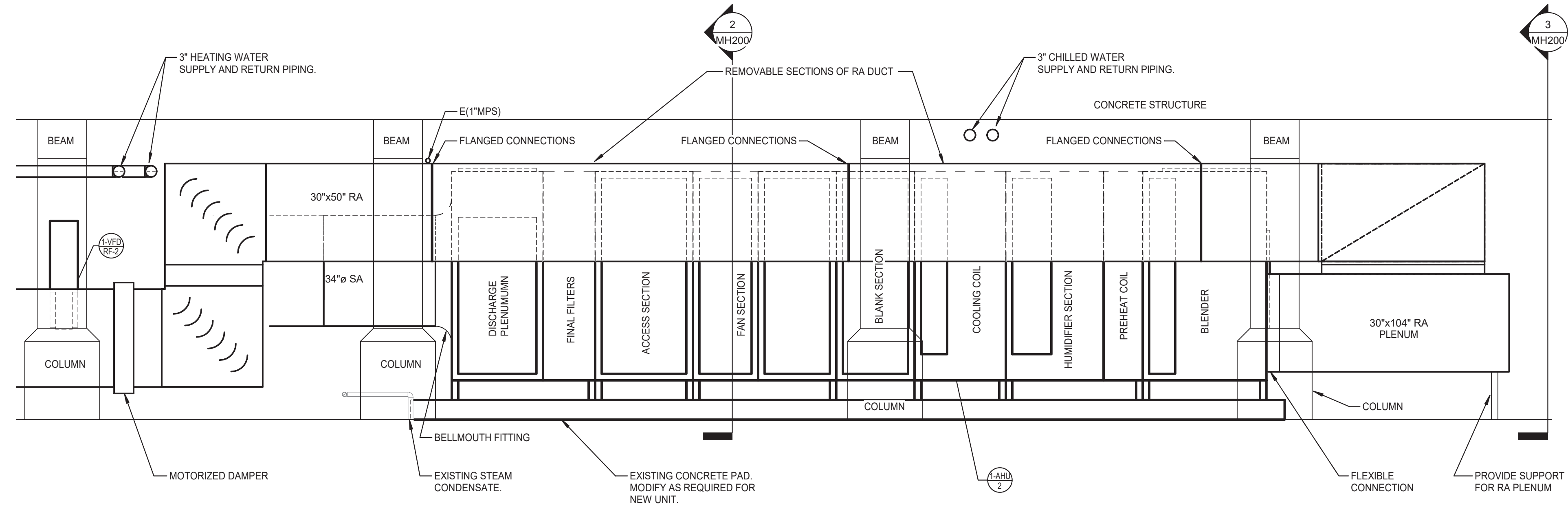
Project Number  
**589-701**  
 Building Number  
**1 & 1C**  
 Drawing Number  
**MH103**

C:\Users\jgpg\Documents\XMR19 MECH RIB 2 Jpgs\SUBMIT.rvt

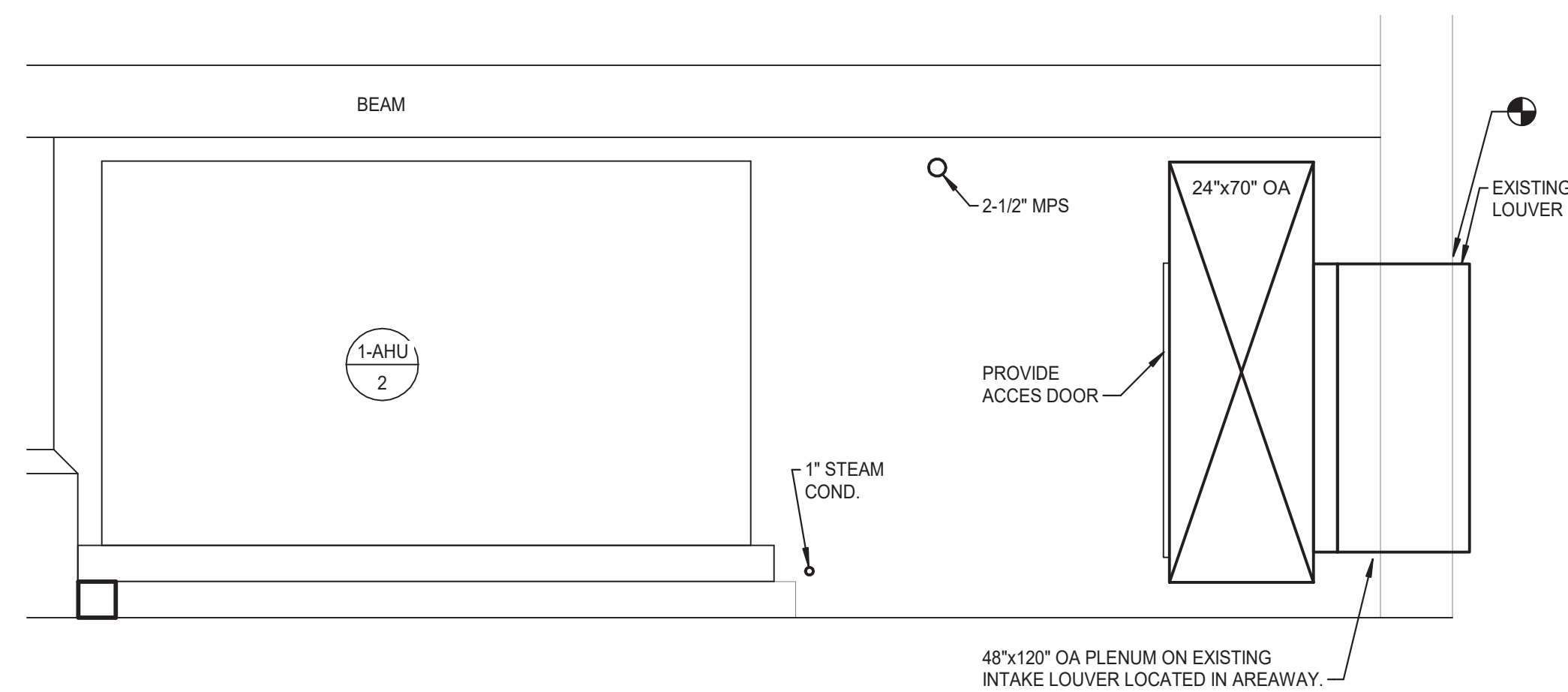


**GENERAL MECHANICAL NOTES:**  
A. REFER TO SHEET MM001 FOR GENERAL NOTES.

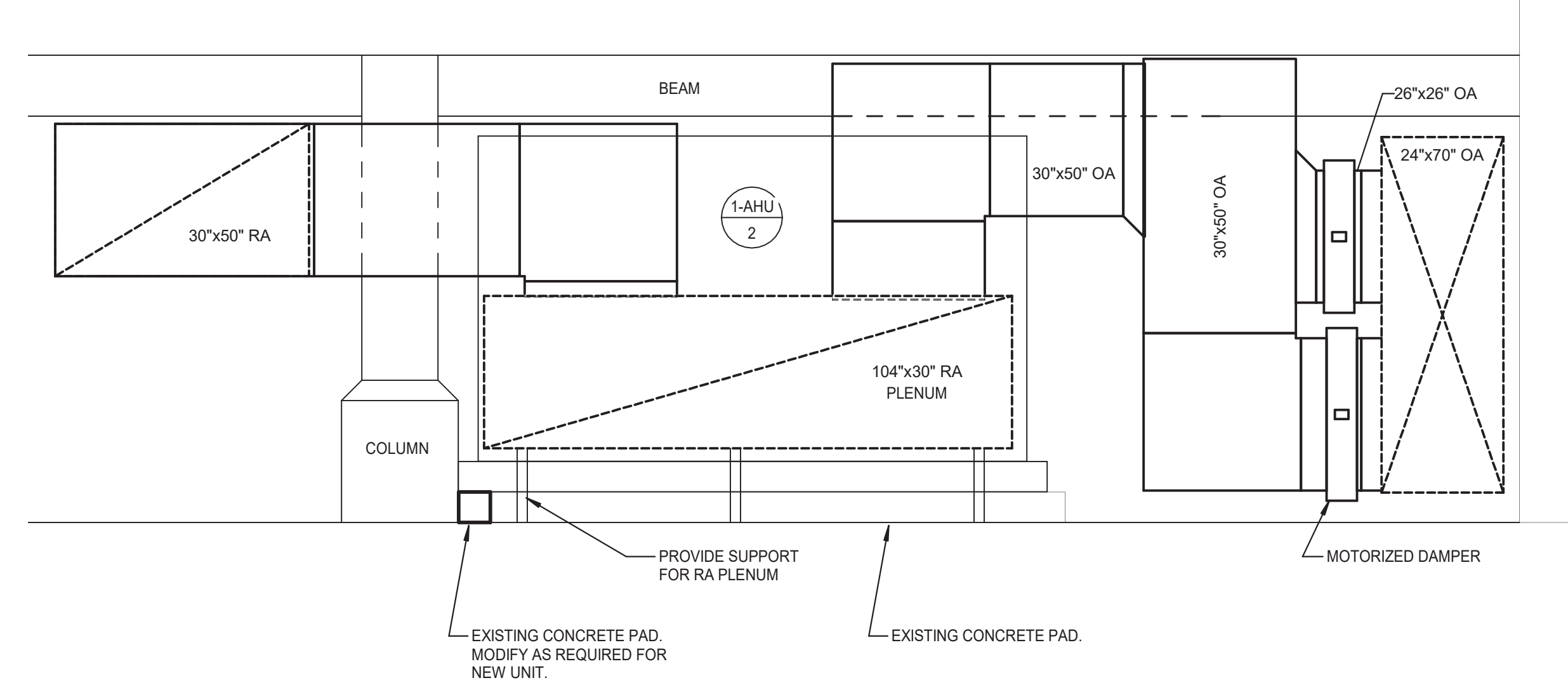
**BID DEDUCTIVE ALTERNATE 2**  
EXISTING AIR HANDLING UNIT AHU 2 AND RETURN FAN #2 SHALL REMAIN. EXISTING DUCTWORK, PIPING AND CONTROLS SERVING AND SHALL REMAIN AS IS. DUCTWORK UP IN SHAWT SHALL REMAIN AS IS. TEMPORARY AND SHALL BE SILENTED.



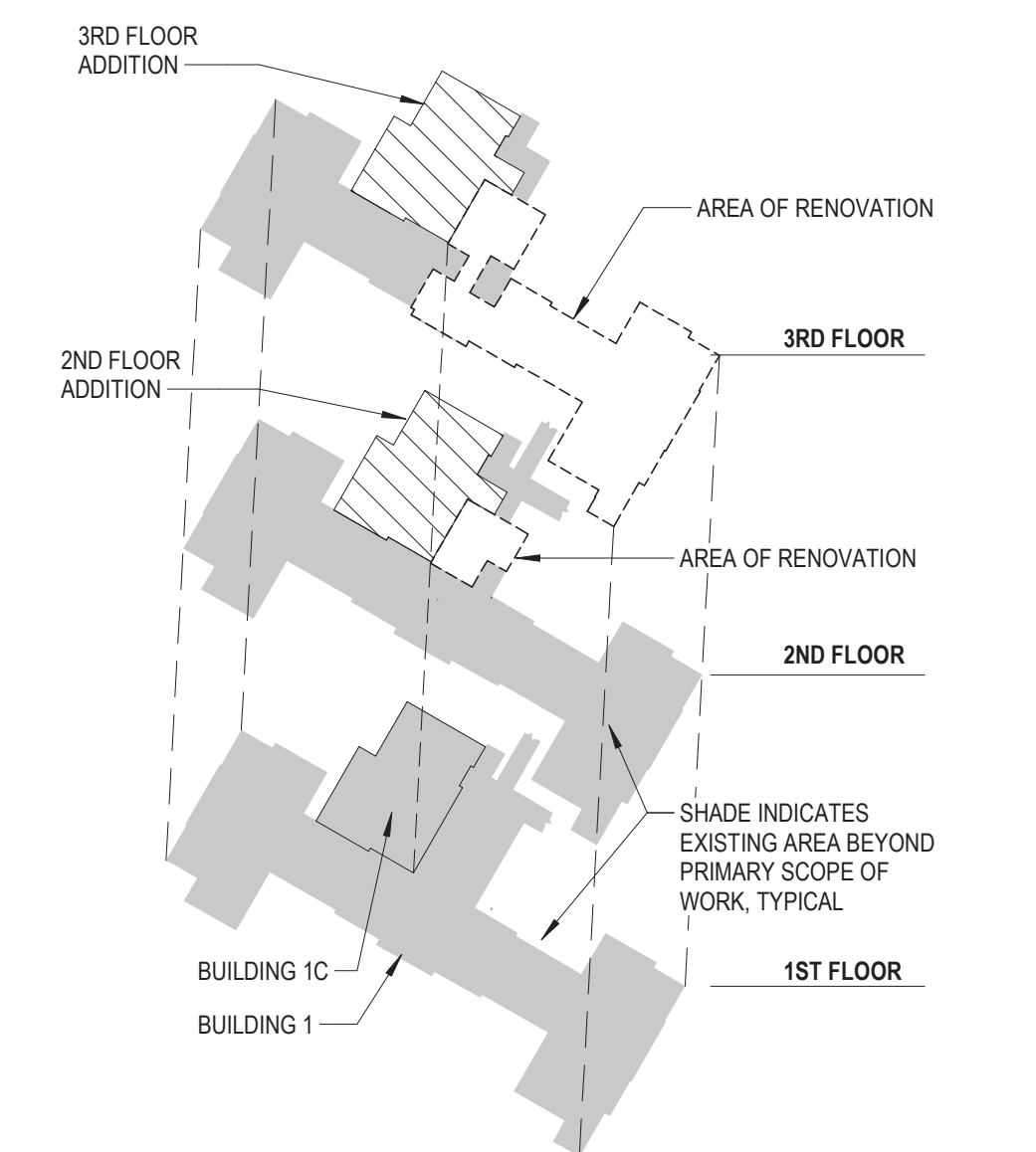
**1 EAST MECH ROOM SECTION 1**  
SCALE: 1/2" = 1'-0"  
0 2 4 8 16 24 32 1/8" = 1'-0"



**2 EAST MECH ROOM SECTION 2**  
SCALE: 1/2" = 1'-0"  
0 2 4 8 16 24 32 1/8" = 1'-0"



**3 EAST MECH ROOM SECTION 3**  
SCALE: 1/2" = 1'-0"  
0 2 4 8 16 24 32 1/8" = 1'-0"



**KEYPLAN**  
SCALE: NONE

**FULLY SPRINKLERED**

Revisions:	Date:

**CONSULTANT**  
**Consultant:**  
 CMTA CONSULTING ENGINEERS, INC.  
 10411 MEETING STREET  
 PROSPECT, KY 40059  
 (502)326-3085

**ARCHITECT/ENGINEER OF RECORD**  
**A/E:**  
 GUIDON DESIGN INC.  
 1221 N PENNSYLVANIA STREET  
 INDIANAPOLIS, IN 46202  
 (502)326-3085

**STAMP**

**Office of Construction and Facilities Management**  
**VA** U.S. Department of Veterans Affairs

**Drawing Title**  
 MECHANICAL SECTIONS

**Approved:**

**Phase**  
 BID DOCUMENTS

**Project Title**  
 VA WICHITA - MED/SURG BEDS FOR PATIENT PRIVACY

**Location**  
 WICHITA, KANSAS

**Issue Date**  
 05/22/2020

**Checked**  
 AJM

**Drawn**  
 JGR

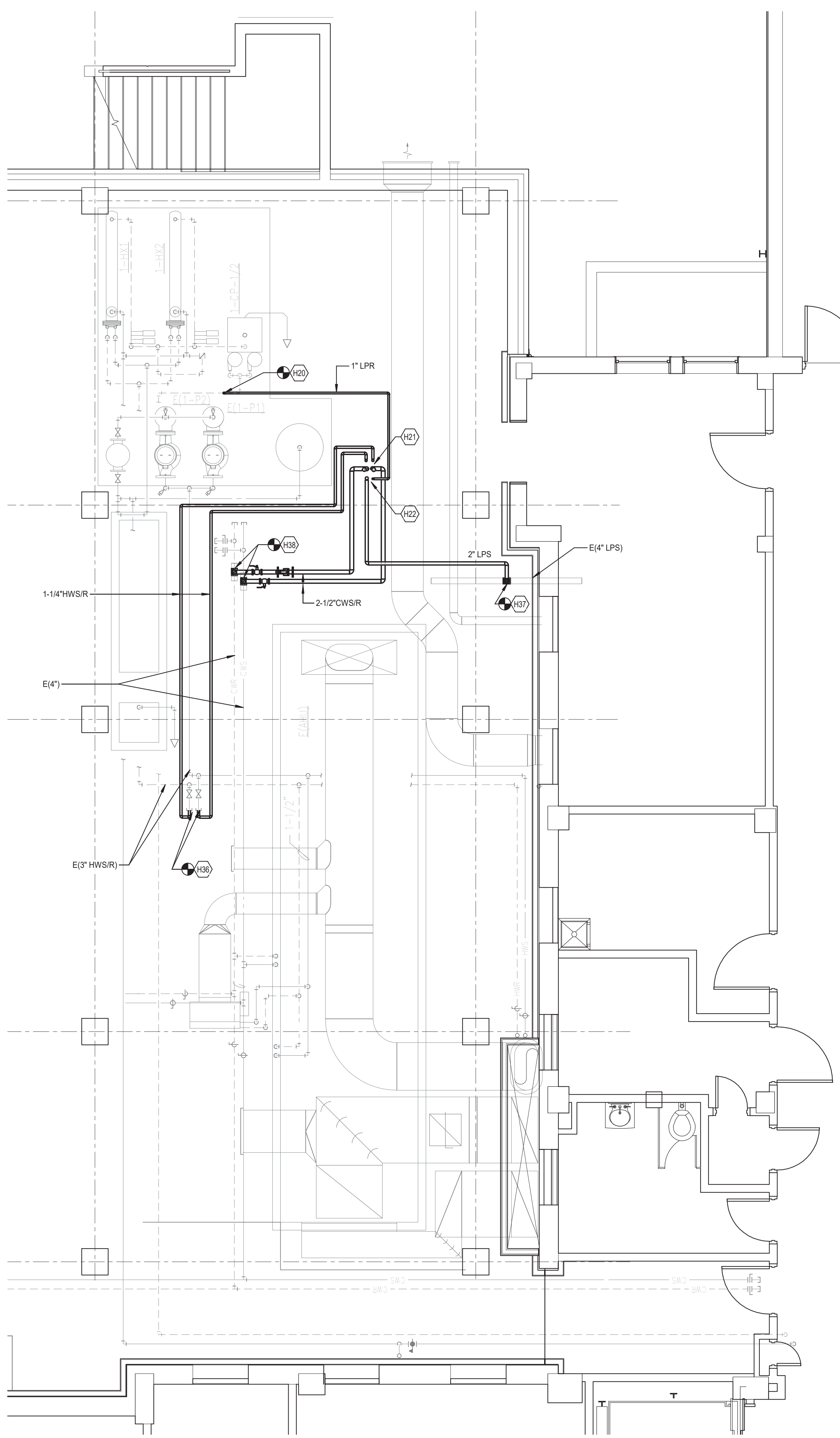
**Project Number**  
 589-701

**Building Number**  
 1 & 1C

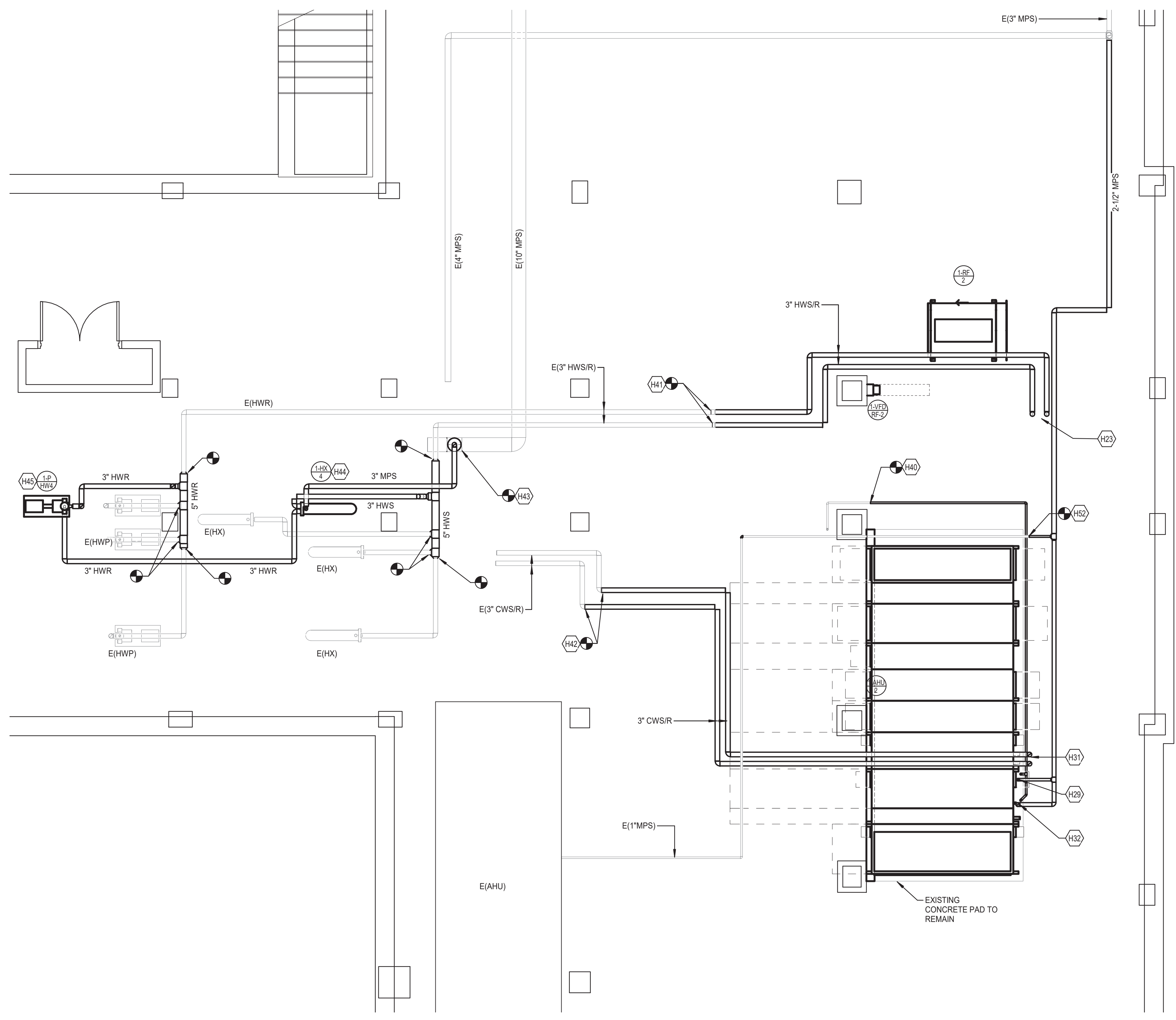
**Drawing Number**  
 MH200

C:\Users\jggs\Documents\VA\19 MECH R1E 2 JggsSBJM1.rvt

**GENERAL MECHANICAL NOTES:**  
A REFER TO SHEET MM001 FOR GENERAL NOTES.



**1 HVAC PLAN - 1C BASEMENT HYDRONICS**  
SCALE: 1/4" = 1'-0"  
1/8" = 1'-0"

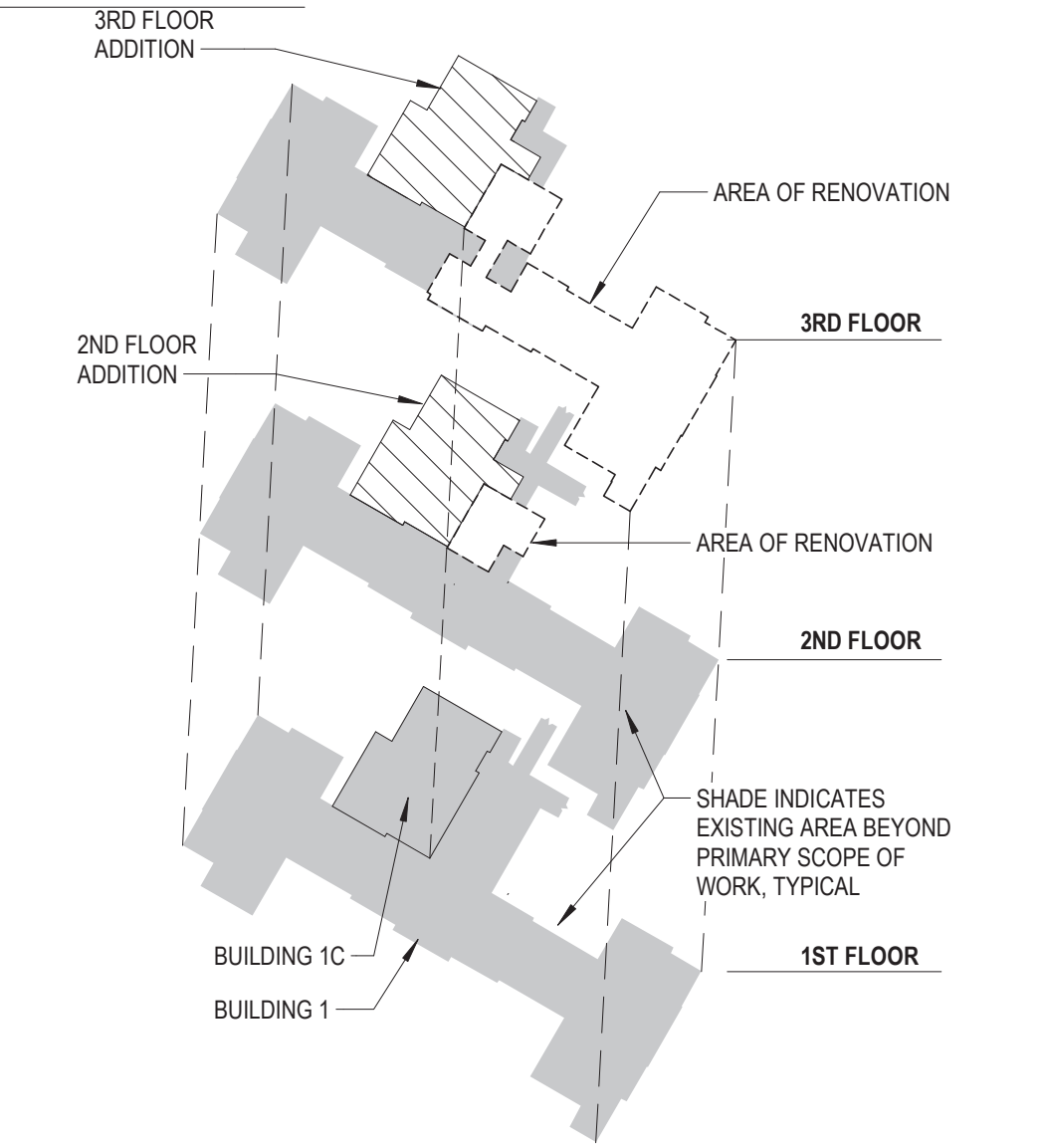


**2 HVAC PLAN - EAST BASEMENT HYDRONICS**  
SCALE: 1/4" = 1'-0"  
1/8" = 1'-0"

**TAGGED NOTES**

H20	CONNECT 2\"/>
H21	2-1/2\"/>
H22	2\"/>
H23	3\"/>
H29	REFER TO HUMIDIFIER PIPING DIAGRAM.
H31	REFER TO CHILLED WATER COIL PIPING DIAGRAM.
H32	REFER TO STEAM HEATING COIL PIPING DIAGRAM.
H36	CONNECT 1-1/4\"/>
H37	CONNECT 1\"/>
H38	CONNECT 2-1/2\"/>
H40	EXTEND EXISTING 1\"/>
H41	CONNECT TO EXISTING 3\"/>
H42	CONNECT TO EXISTING 3\"/>
H43	CONNECT 3\"/>
H44	REFER TO HEAT EXCHANGER PIPING DETAIL.
H45	REFER TO BASE MOUNTED PUMP DETAIL.
H52	CONNECT EXISTING 1\"/>

**BID DEDUCTIVE ALTERNATE 2**  
EXISTING AIR HANDLING UNIT AHU3 AND RETURN FAN RF 3 SHALL REMAIN. EXISTING DUCTWORK, PIPING AND CONTROLS SERVING AHU SHALL REMAIN AS IS. DUCTWORK UP IN SHAFT SHALL REMAIN AS IS. TEMPORARY AH4 SHALL BE DELETED.



**KEYPLAN**  
SCALE: NONE

**FULLY SPRINKLERED**

Revisions:	Date:

**CONSULTANT**  
**Consultant:**  
 CMTA CONSULTING ENGINEERS, INC.  
 10411 MEETING STREET  
 PROSPECT, KY 40059  
 (502)326-3085

**ARCHITECT/ENGINEER OF RECORD**  
**A/E:**  
 GUIDON DESIGN INC.  
 1221 N PENNSYLVANIA STREET  
 INDIANAPOLIS, IN 46202  
 (502)326-3085

**STAMP**

**Office of Construction and Facilities Management**  
 U.S. Department of Veterans Affairs

**Drawing Title**  
 HYDRONICS PLAN - BASEMENT

**Approved:**

**Phase**  
 BID DOCUMENTS

**Project Title**  
 VA WICHITA - MED/SURG BEDS FOR PATIENT PRIVACY

**Location**  
 WICHITA, KANSAS

**Issue Date**  
 05/22/2020

**Checked**

**Drawn**

**Project Number**  
 589-701

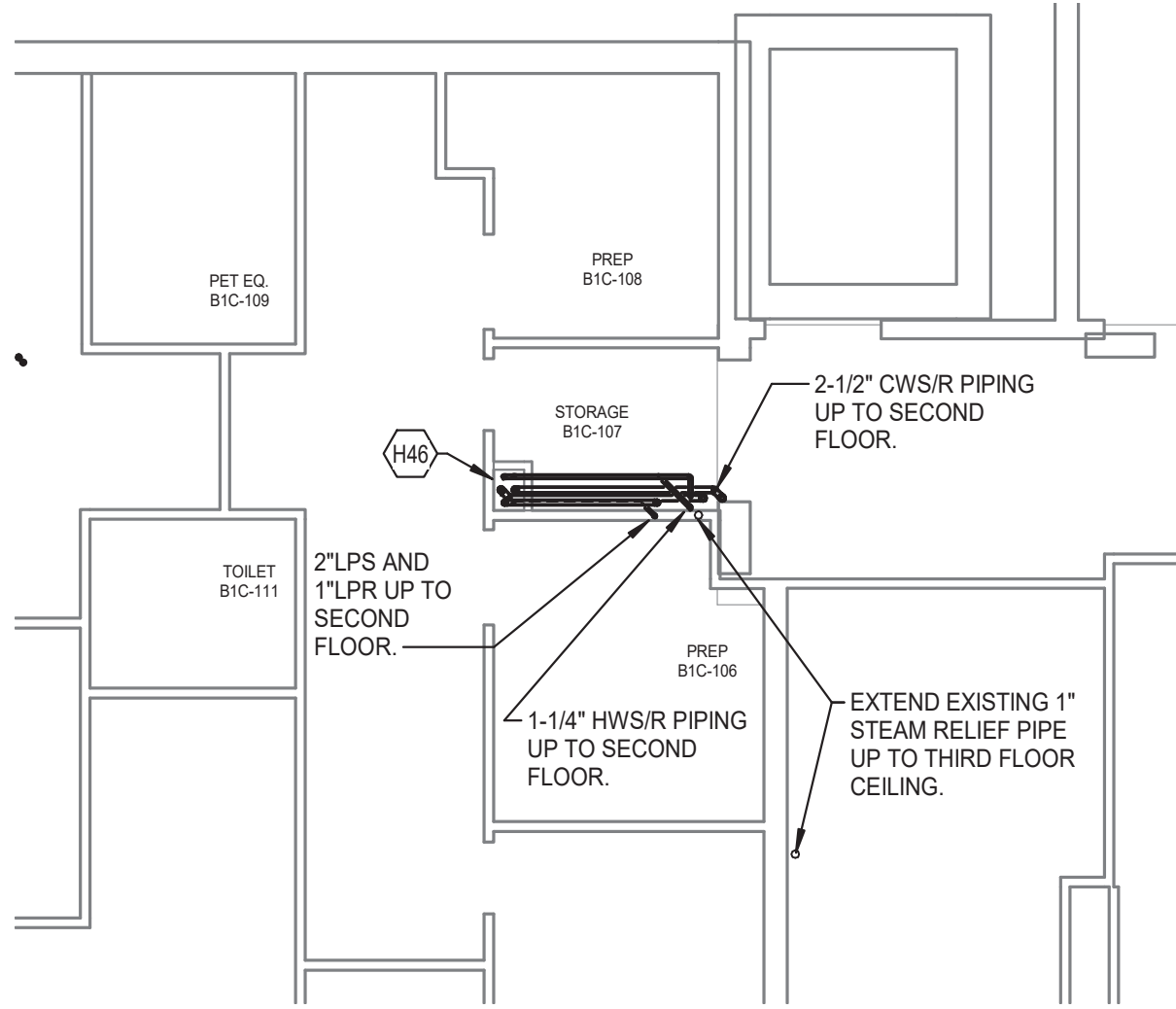
**Building Number**  
 1 & 1C

**Drawing Number**  
 MP100

C:\Users\jggs\Documents\WV\19 MECH R1E 2 Jpgs\B3M1.rvt  
 5/22/2020 10:02:38 AM  
 VA FORM 08 - 6231



**BID DEDUCTIVE ALTERNATE 4**  
 FOR THE 3RD FLOOR OF B1C, FULLY BUILD OUT ROOMS C30K, C30J, C30K, C30B AND C31G. FOR THE 2ND FLOOR OF B1C, FULLY BUILD OUT ROOMS C20J AND C20K. THE REMAINDER OF THE INTERIOR SPACES TO BE FINISHED WITH CARPET TILE, TRACT AND ACCT CEILING, WITH SMALL POWER POLES FOR ELECTRIC AND DATA. THE HVAC TO BE REDUCED TO 3 ZONES IN EACH SPACE.

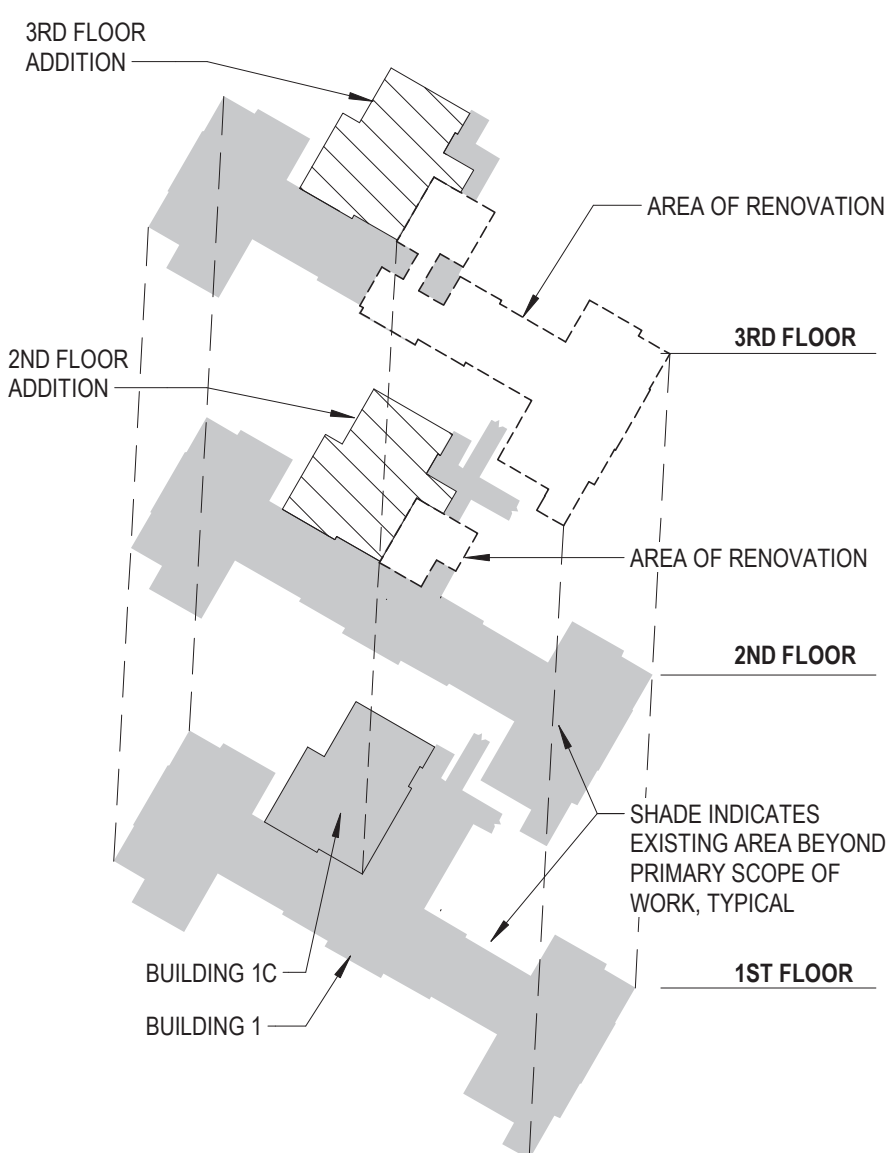
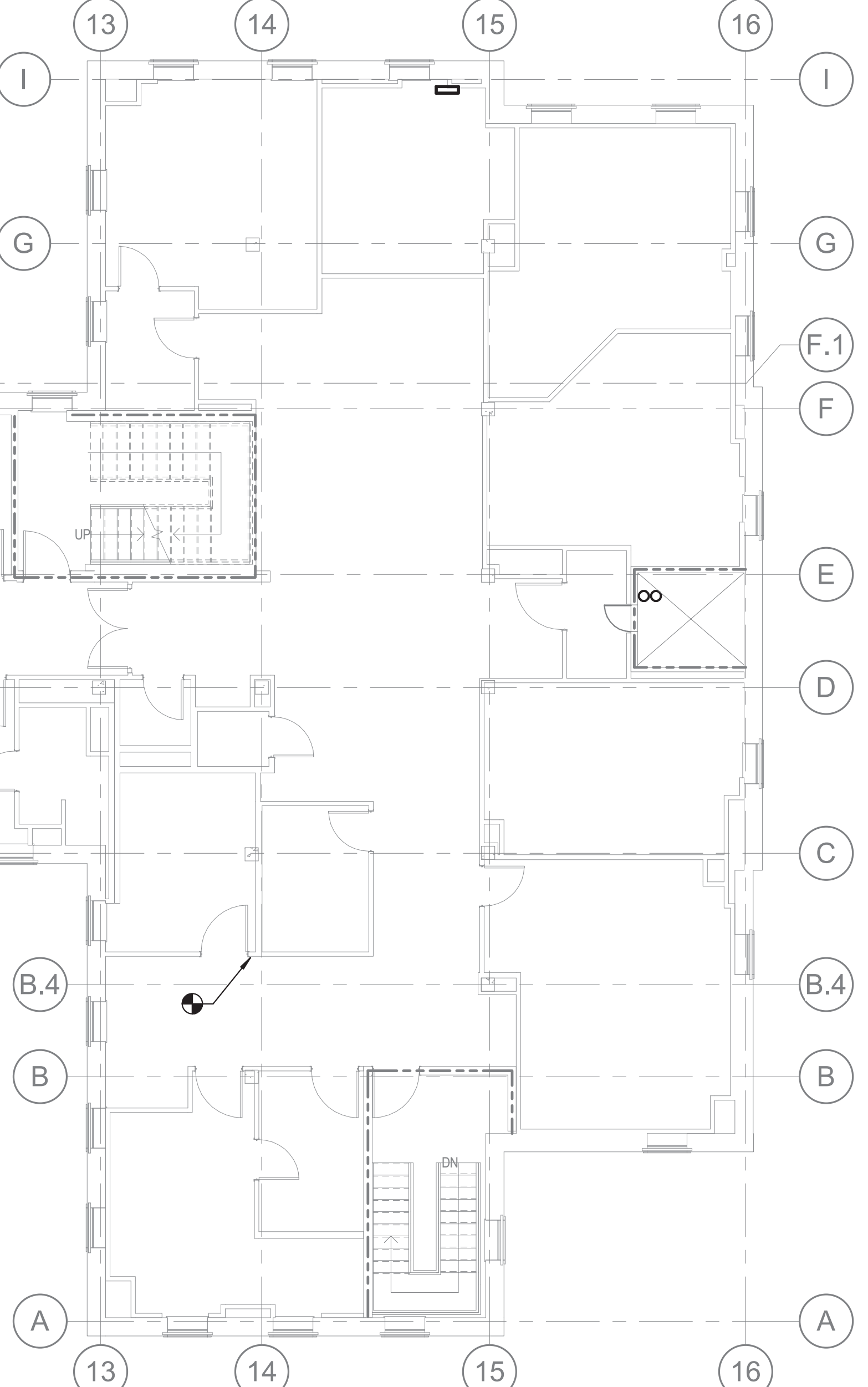


**GENERAL MECHANICAL NOTES:**  
 A. REFER TO SHEET MM001 FOR GENERAL NOTES.

**TAGGED NOTES**

H4	1-1/4" HWS/R PIPING DOWN IN SHAFT FROM THIRD FLOOR. FIRE SEAL AROUND PENETRATION.
H8	ROUTE 3/4" CONDENSATE FROM UNIT TO WALL. ROUTE DN IN WALL TO WALL BOX.
H9	REFRIGERANT PIPING DN FROM THIRD FLOOR.
H10	2-1/2" CWS&R UP FROM FIRST FLOOR, CONTINUE UP TO THIRD FLOOR.
H14	HUMIDITY SENSOR.
H24	1-1/4" HWS/R UP TO THIRD FLOOR CEILING.
H25	2"LPS AND 1"LPR UP TO SECOND FLOOR.
H46	PIPING UP FROM BASEMENT IN CHASE. ROUTE PIPING ABOVE E FIRST FLOOR CEILING AND UP TO SECOND FLOOR. MODIFY DUCTWORK AS REQUIRED.
H49	EXTEND EXISTING REFRIGERANT PIPING ON FIRST FLOOR AND ROUTE UP IN WALL. VERIFY REFRIGERANT PIPING SIZES WITH MANUFACTURER FOR NEW UNIT LOCATIONS.

**2 HVAC PLAN - PARTIAL FIRST FLOOR**  
 SCALE: 1/8" = 1'-0"



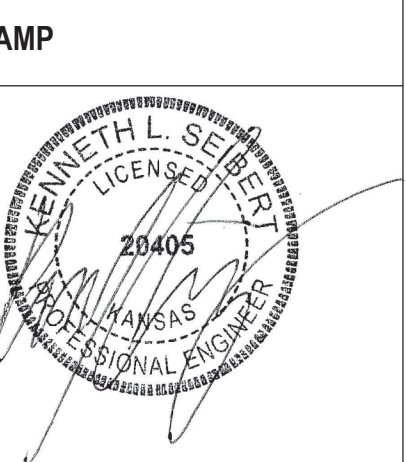
**1 HVAC PLAN - SECOND FLOOR HYDRONICS**  
 SCALE: 1/8" = 1'-0"

**FULLY SPRINKLERED**

Revisions:	Date:

**CONSULTANT**  
 Consultant:  
 CMTA CONSULTING ENGINEERS, INC.  
 10411 MEETING STREET  
 PROSPECT, KY 40059  
 (502)326-3085

**ARCHITECT/ENGINEER OF RECORD**  
 A/E:  
 GUIDON DESIGN INC.  
 1221 N PENNSYLVANIA STREET  
 INDIANAPOLIS, IN 46202  
 (502)326-3085



Office of Construction and Facilities Management  
 VA U.S. Department of Veterans Affairs

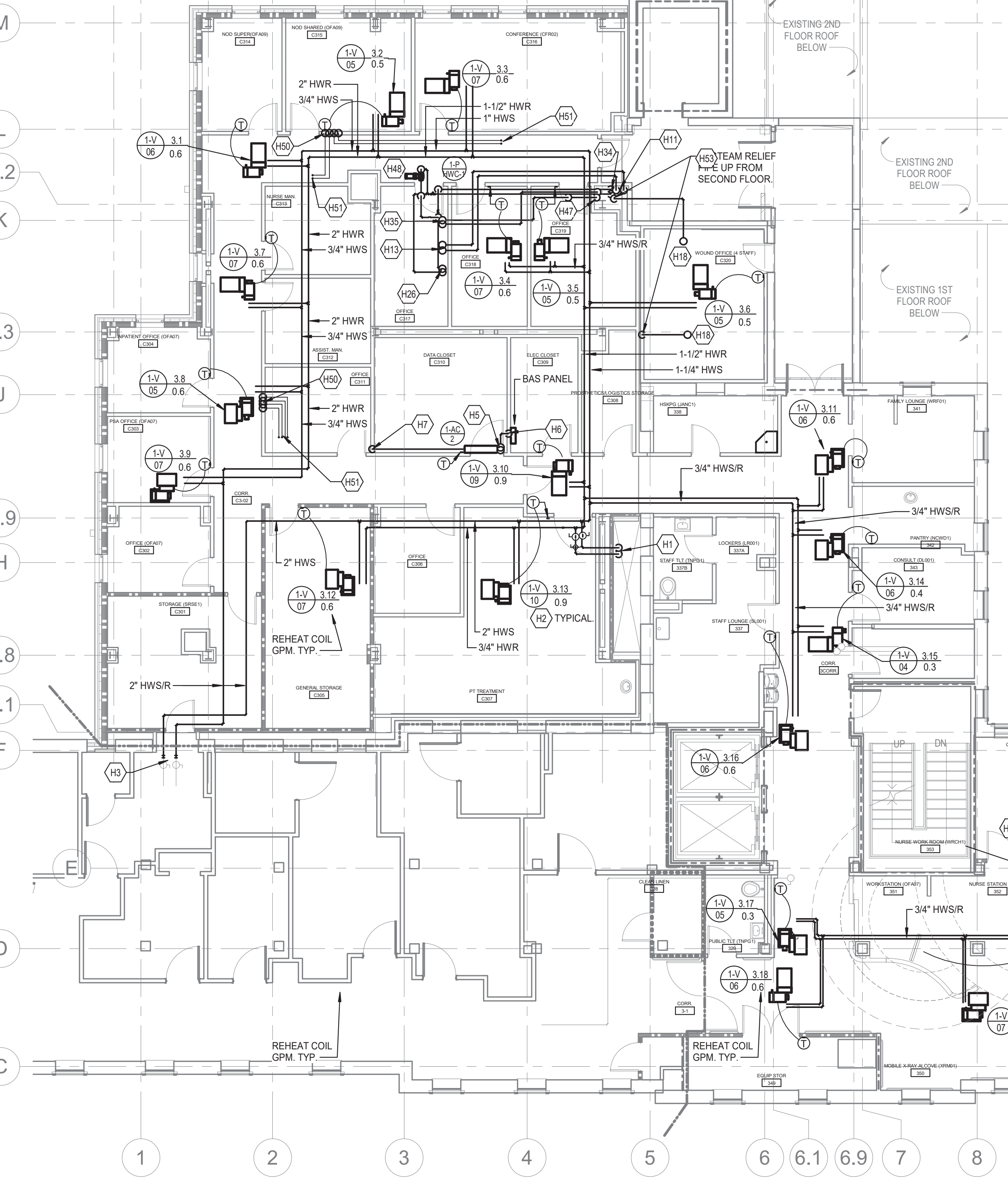
Drawing Title  
**HYDRONICS PLAN - SECOND FLOOR**  
 Approved:

Phase  
**BID DOCUMENTS**

Project Title  
**VA WICHITA - MED/SURG BEDS FOR PATIENT PRIVACY**  
 Location  
**WICHITA, KANSAS**  
 Issue Date  
 05/22/2020

Project Number  
 589-701  
 Building Number  
 1 & 1C  
 Drawing Number  
**MP101**



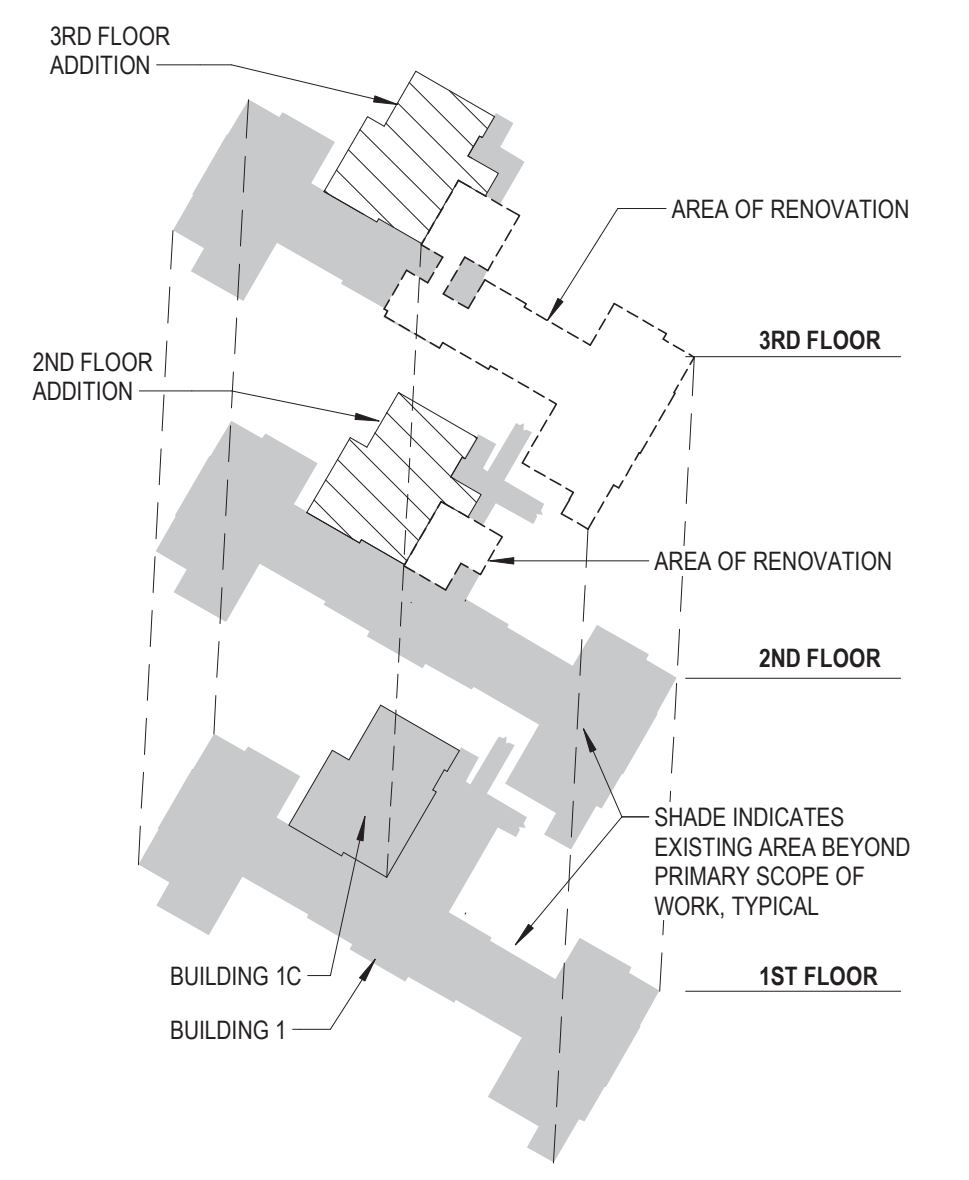
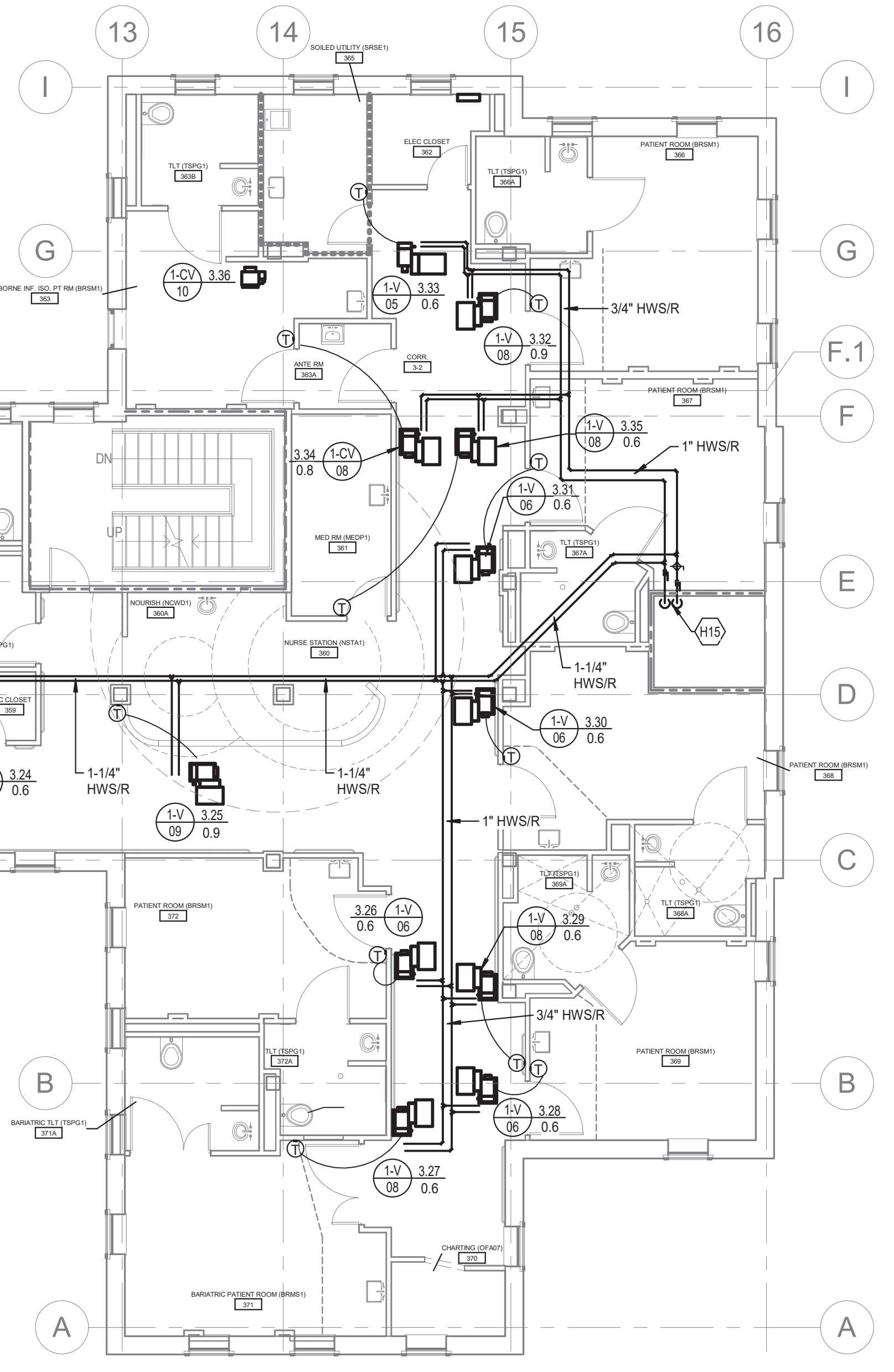


**BID DEDUCTIVE ALTERNATE 3**  
FOR THE 3RD FLOOR OF BIC FULLY BUILD OUT ROOMS C306, C307, C308, C309 AND C310, THE REMAINDER OF THE INTERIOR SPACE TO BE FINISHED WITH CARPET TILE, PAINT, AND ACET CEILING, WITH SMALL POWER POLES FOR ELECTRIC AND DATA. THE HVAC TO BE REDUCED TO ZONES IN THIS SPACE FULLY BUILT OUT THE 3RD FLOOR.

**GENERAL MECHANICAL NOTES:**  
A. REFER TO SHEET MM001 FOR GENERAL NOTES.

**TAGGED NOTES**

H1	1-1/4" HWSR PIPING DOWN IN SHAFT TO SECOND FLOOR. FIRE SEAL AROUND PENETRATION.
H2	REFER TO REHEAT COIL PIPING DETAIL, TYPICAL.
H3	CONNECT 2" HWSR TO EXISTING.
H5	REFRIGERANT PIPING DN FROM CONDENSING UNIT ON ROOF. ROUTE PIPING TO AC-2 AND DOWN IN WALL TO AC-1.
H6	REFRIGERANT PIPING DN TO SECOND FLOOR.
H7	ROUTE 3/4" CONDENSATE DN IN WALL TO SECOND FLOOR. CONNECT TO 3/4" CONDENSATE FROM SAC-1.
H11	2-1/2" CWSR UP FROM SECOND FLOOR.
H13	2-1/2" CWSR UP TO 1-RTU-1 ON ROOF.
H14	HUMIDITY SENSOR.
H15	3" HWSR UP AND DOWN.
H18	ROUTE STEAM RELIEF VENT OVER AND UP THRU ROOF.
H26	1-1/4" HWSR UP TO 1-RTU-1 ON ROOF.
H34	1-1/4" HWSR UP FROM SECOND FLOOR.
H35	2" LPS AND 1" LPR UP TO HUMIDIFIER IN 1-RTU-1.
H47	2" LPS AND 1" LPR UP FROM SECOND FLOOR.
H48	REFER TO IN-LINE PUMP CONNECTIONS DETAIL. PROVIDE DRAIN PAN BELOW PUMP.
H50	REFRIGERANT PIPING UP TO THIRD FLOOR CEILING. ROUTE UP THRU ROOF TO RELOCATED CRC UNITS ON ROOF.
H51	REFRIGERANT PIPING UP TO RELOCATED CRC UNITS ON ROOF.
H53	1" STEAM RELIEF PIPING UP FROM FIRST FLOOR. COORDINATE ROUTING WITH WALLS, TYPICAL.

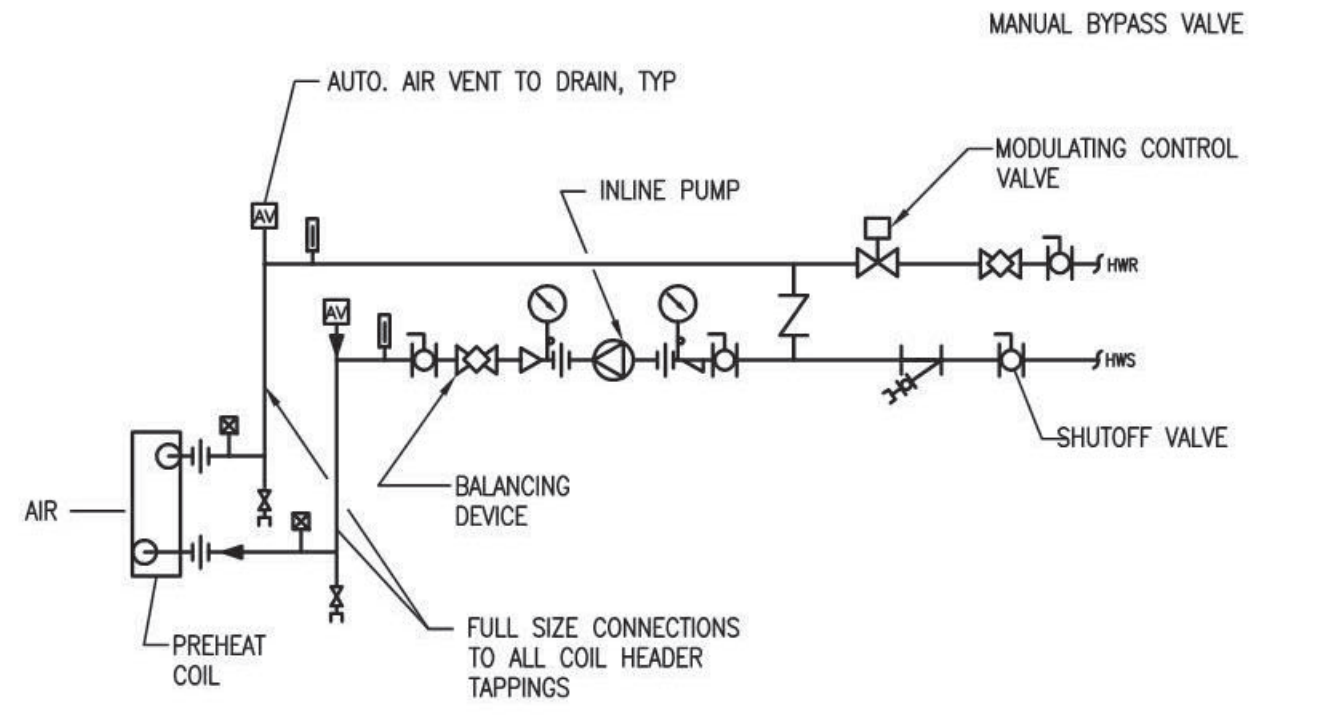


**KEYPLAN**  
SCALE: NONE

**HVAC PLAN - THIRD FLOOR HYDRONICS**  
SCALE: 1/8" = 1'-0"  
1/8" = 1'-0"

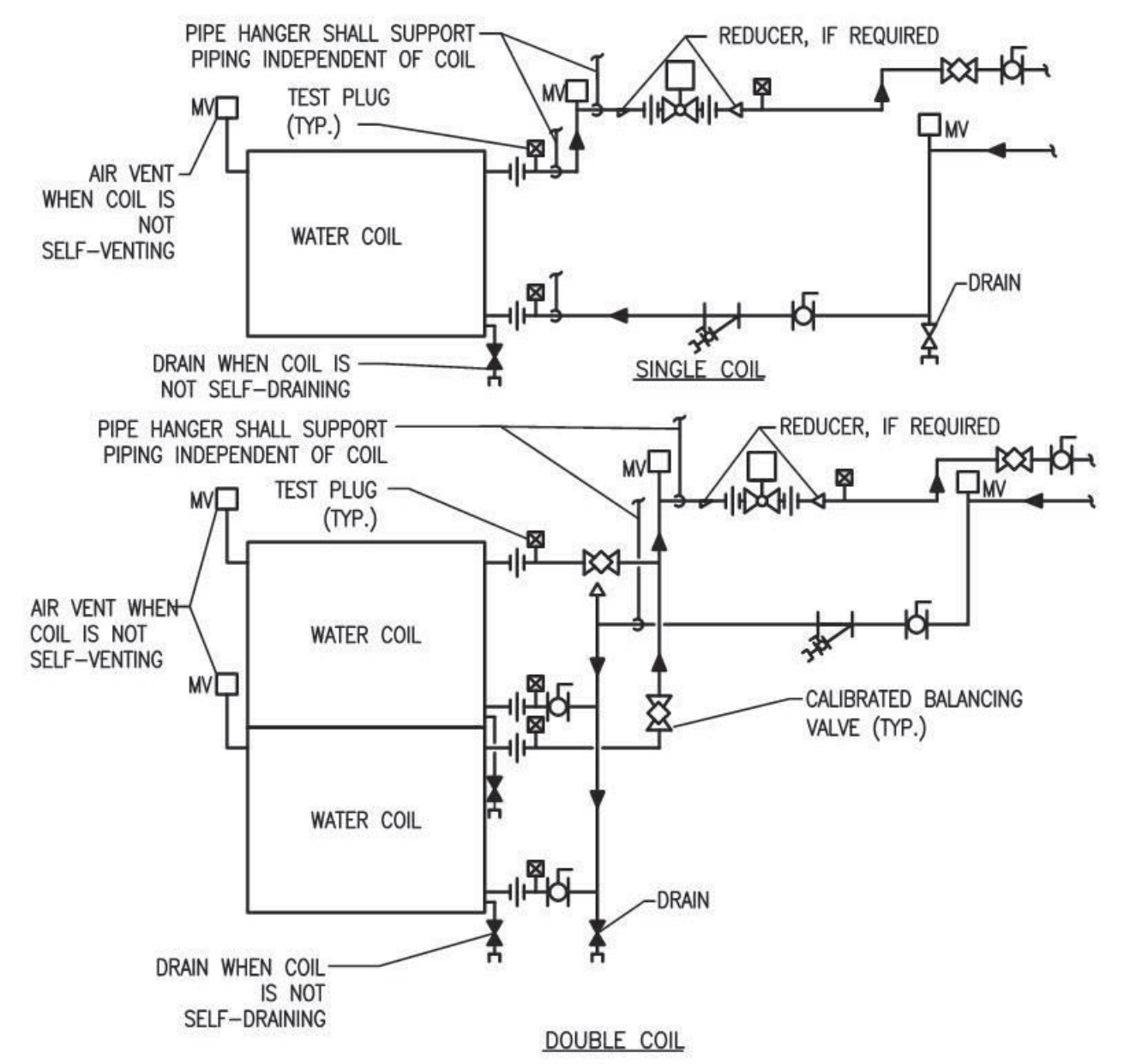
**FULLY SPRINKLERED**

Revisions:	<b>CONSULTANT</b> CMTA CONSULTING ENGINEERS, INC. 10411 MEETING STREET PROSPECT, KY 40059 (502)326-3085	<b>ARCHITECT/ENGINEER OF RECORD</b> A/E: GUIDON DESIGN INC. 1221 N PENNSYLVANIA STREET INDIANAPOLIS, IN 46202 (502)326-3085	STAMP 	Office of Construction and Facilities Management VA U.S. Department of Veterans Affairs	Drawing Title <b>HYDRONICS PLAN - THIRD FLOOR</b>	Phase <b>BID DOCUMENTS</b>	Project Title <b>VA WICHITA - MED/SURG BEDS FOR PATIENT PRIVACY</b>	Project Number <b>589-701</b>	
	Date:				Approved:		Location <b>WICHITA, KANSAS</b>	Building Number <b>1 &amp; 1C</b>	
						Issue Date <b>05/22/2020</b>	Checked	Drawn	Drawing Number <b>MP102</b>



**PREHEAT COIL (HOT WATER) - PIPING CONNECTIONS - RTU**

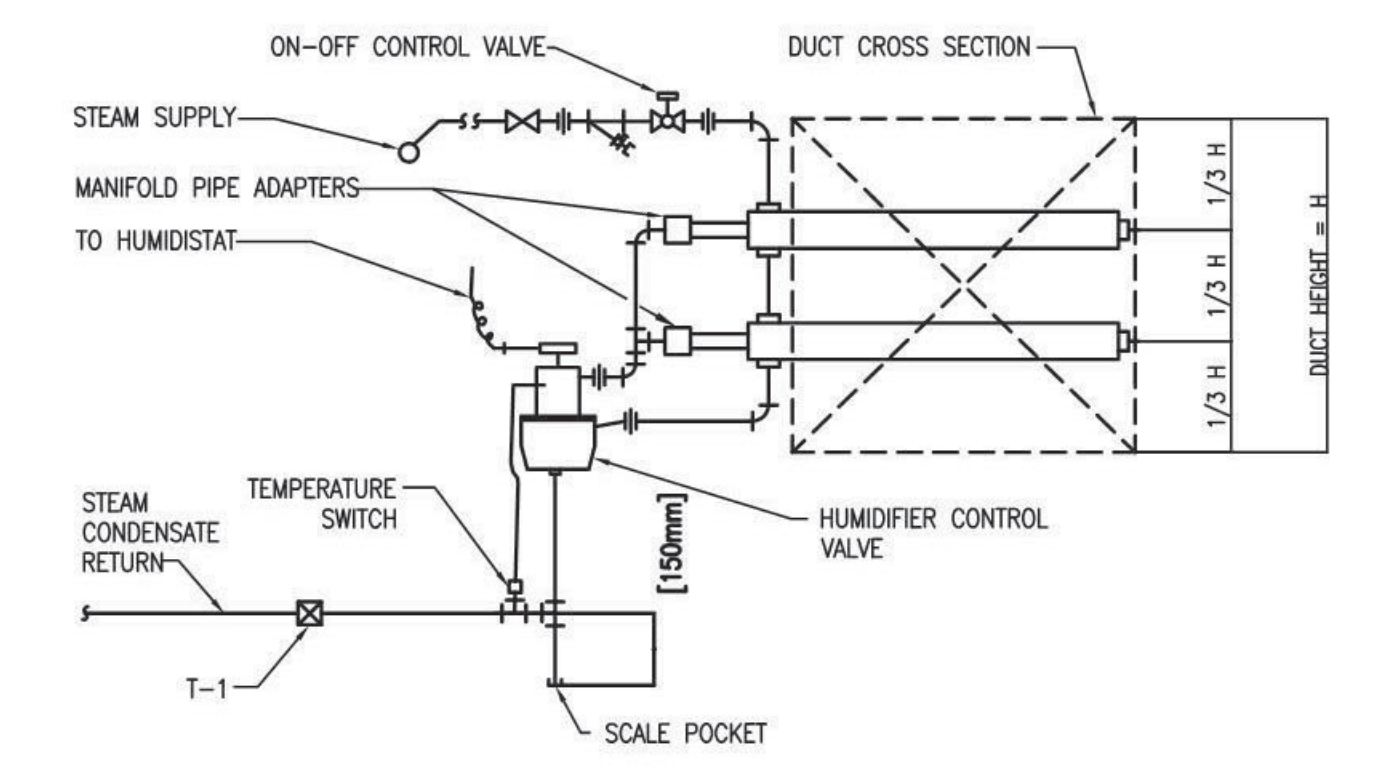
NTS



**WATER COILS - PIPING CONNECTIONS**

NTS

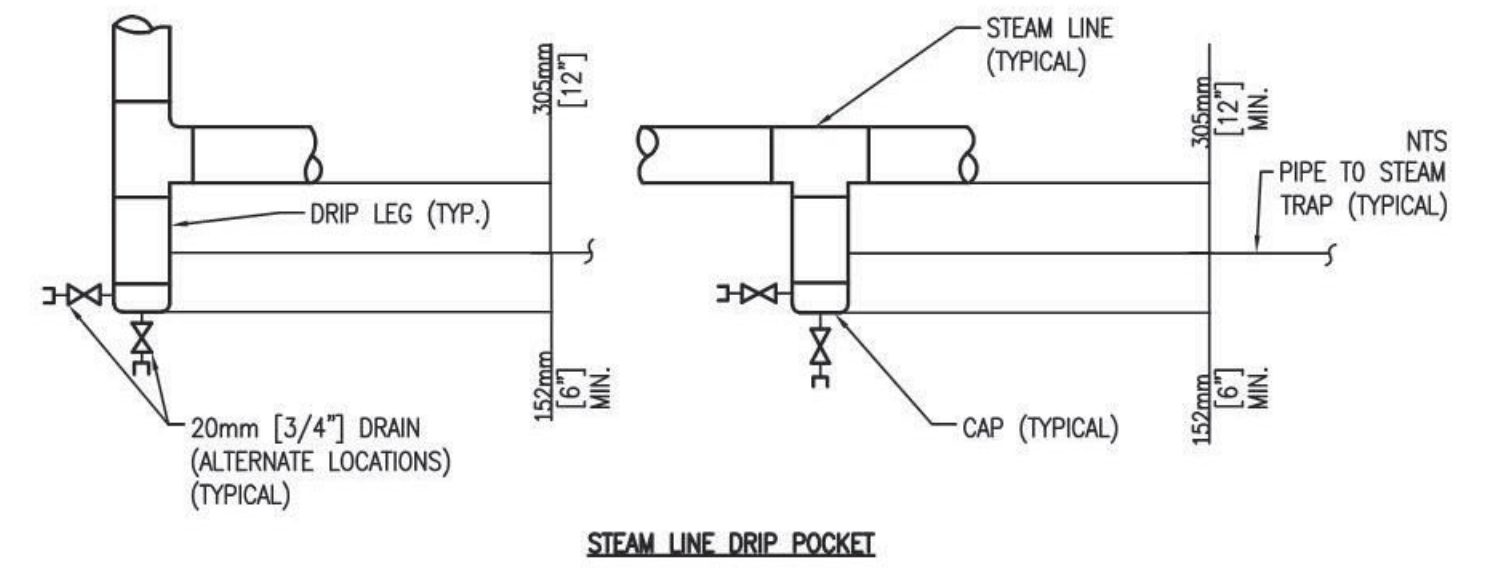
- NOTES:
- WHEN COIL IS INCLUDED IN CASING MOUNTED ON VIBRATION ISOLATORS THE FIRST 2 HANGERS FOR EACH PIPE SHALL BE SPRING & NEOPRENE TYPE. TYPE "H" FOR 100mm [4"] PIPE & SMALLER. TYPE "H-P" FOR 125mm [5"] PIPE & LARGER.
  - PIPING SHALL BE INSTALLED IN SUCH MANNER THAT IT WILL NOT BLOCK THE SWING OR USE OF ACCESS DOORS OR PANELS; NEITHER SHALL IT BLOCK THE SERVICING OF FILTERS, VALVES, OR EQUIPMENT.
  - THE FLOW ELEMENT MAY BE INSTALLED IN THE SUPPLY PIPING IF THE REQUIRED MINIMUM UPSTREAM AND DOWNSTREAM DIMENSIONS CANNOT BE OBTAINED IN THE RETURN PIPING.



**STEAM HUMIDIFIER - PIPING CONNECTIONS (MULTIPLE DISPERSION TUBES)**

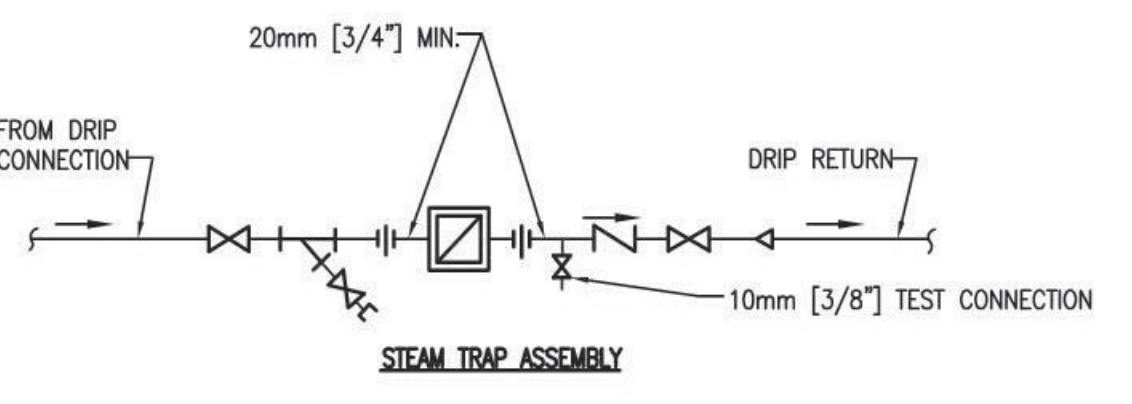
NTS

NOTE: SEE MANUFACTURER'S PIPING RECOMMENDATIONS FOR FINAL LAYOUT



**STEAM LINE DRIP POCKET**

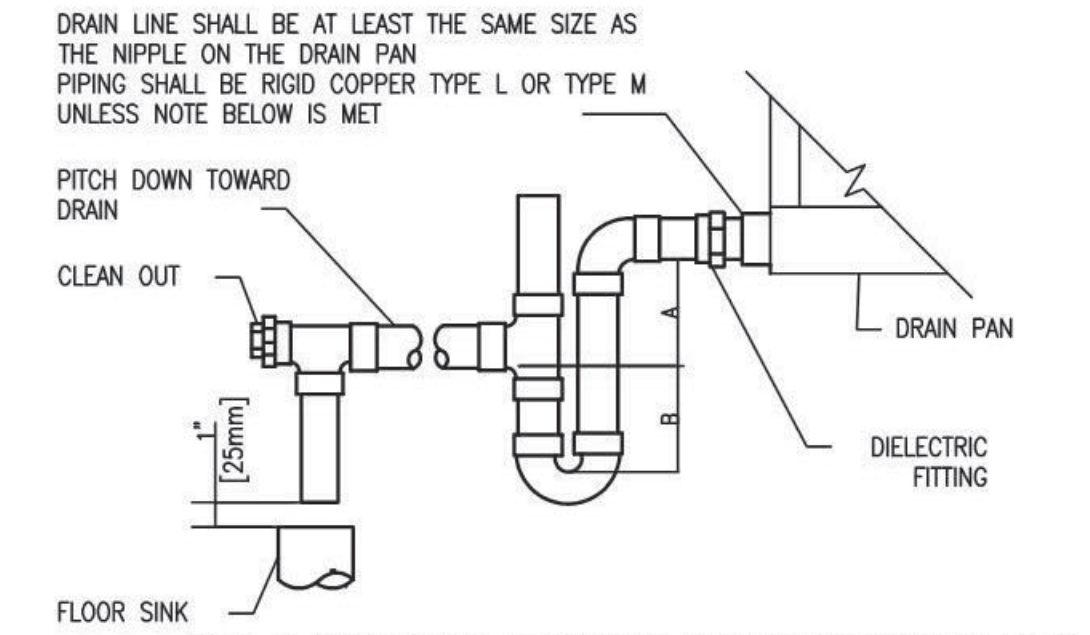
NOTE: DRIP POCKET PIPE SIZE SAME AS STEAM MAIN UNLESS OTHERWISE NOTED.



**STEAM TRAP ASSEMBLY**

**STEAM LINE DRIP POCKET AND STEAM TRAP ASSEMBLY**

NTS



**AIR HANDLING UNIT DRAIN TRAP DETAIL**

NTS

DRAIN LINE SHALL BE AT LEAST THE SAME SIZE AS THE NIPPLE ON THE DRAIN PAN PIPING SHALL BE RIGID COPPER TYPE L OR TYPE M UNLESS NOTE BELOW IS MET

PITCH DOWN TOWARD DRAIN

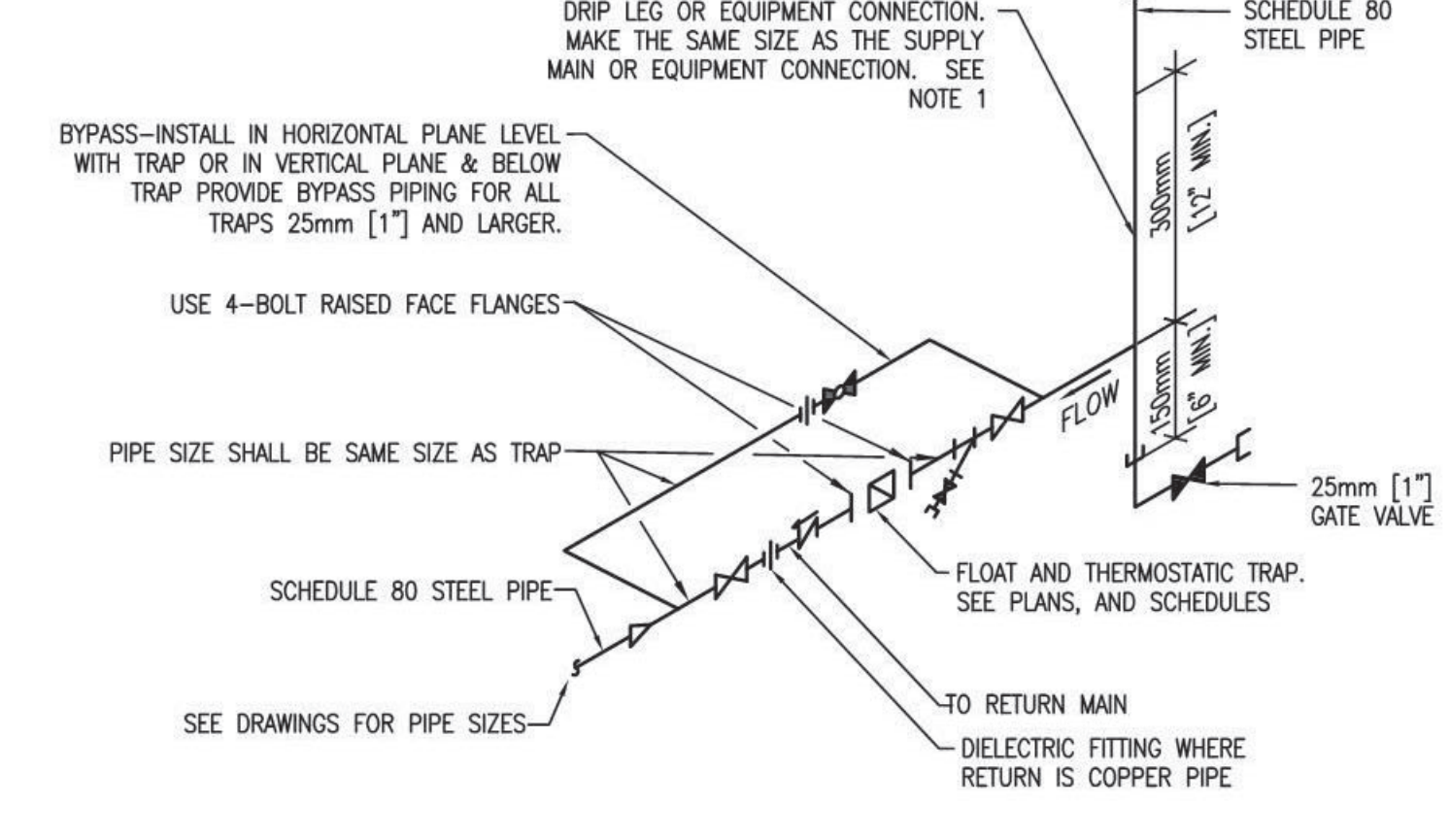
CLEAN OUT

FLOOR SINK

NOTE: 1. CPVC PIPE MAY BE USED ONLY IF APPROVED BY LOCAL VA AND IS INDOORS AND DOES NOT PASS THROUGH RATED BARRIERS. 2. DIELECTRIC FITTING TO BE USED WHEN TWO DISSIMILAR METALS ARE TO BE CONNECTED.

UNIT TYPE	A	B
DRAW THRU	2" [50mm] PLUS X	X

WHERE X = STATIC PRESSURE IN PAN



**FLOAT AND THERMOSTATIC STEAM TRAP ASSEMBLY**

NTS

DRIP LEG OR EQUIPMENT CONNECTION, MAKE THE SAME SIZE AS THE SUPPLY MAIN OR EQUIPMENT CONNECTION. SEE NOTE 1

BYPASS-INSTALL IN HORIZONTAL PLANE LEVEL WITH TRAP OR IN VERTICAL PLANE & BELOW TRAP PROVIDE BYPASS PIPING FOR ALL TRAPS 25mm [1"] AND LARGER.

USE 4-BOLT RAISED FACE FLANGES

PIPE SIZE SHALL BE SAME SIZE AS TRAP

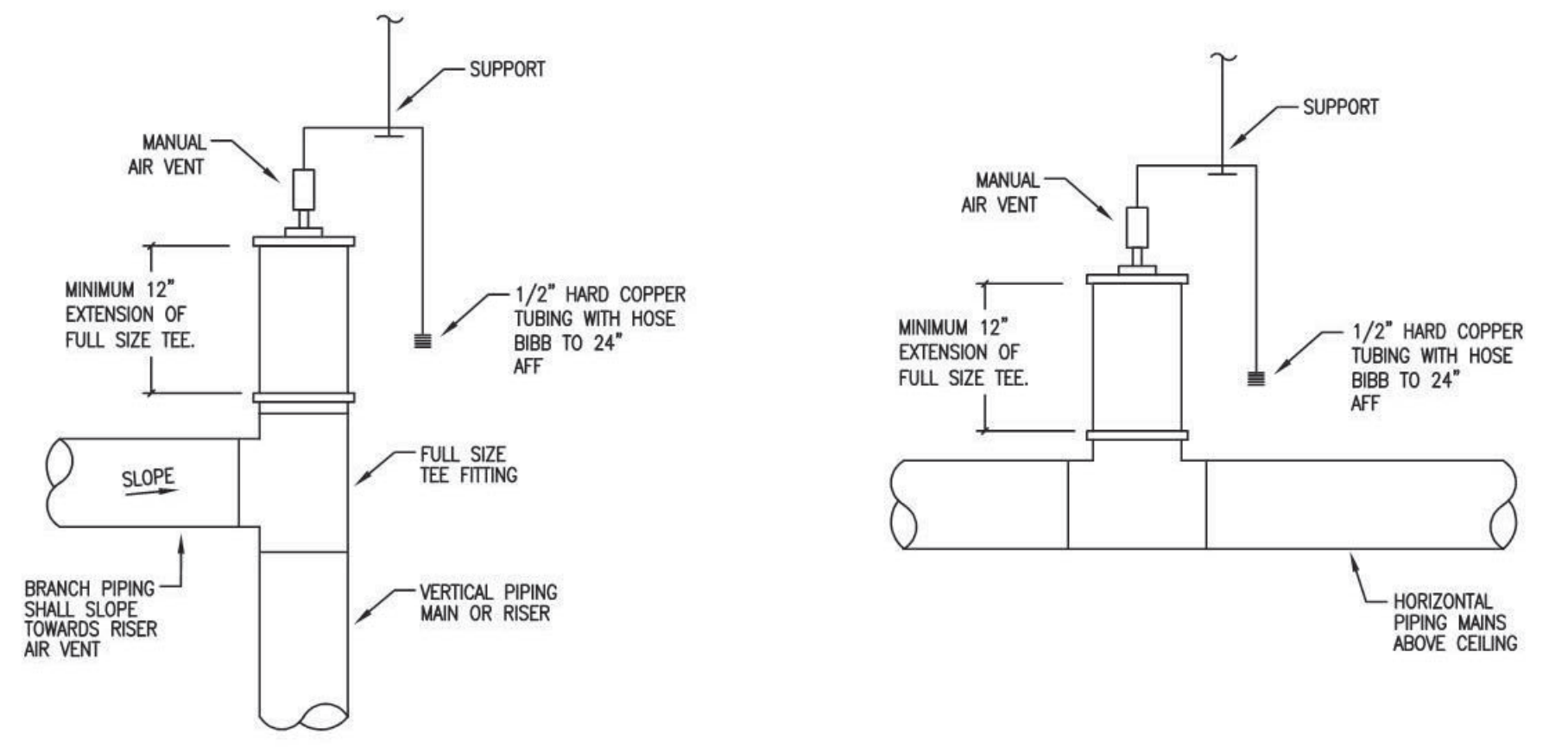
SCHEDULE 80 STEEL PIPE

SEE DRAWINGS FOR PIPE SIZES

TO RETURN MAIN

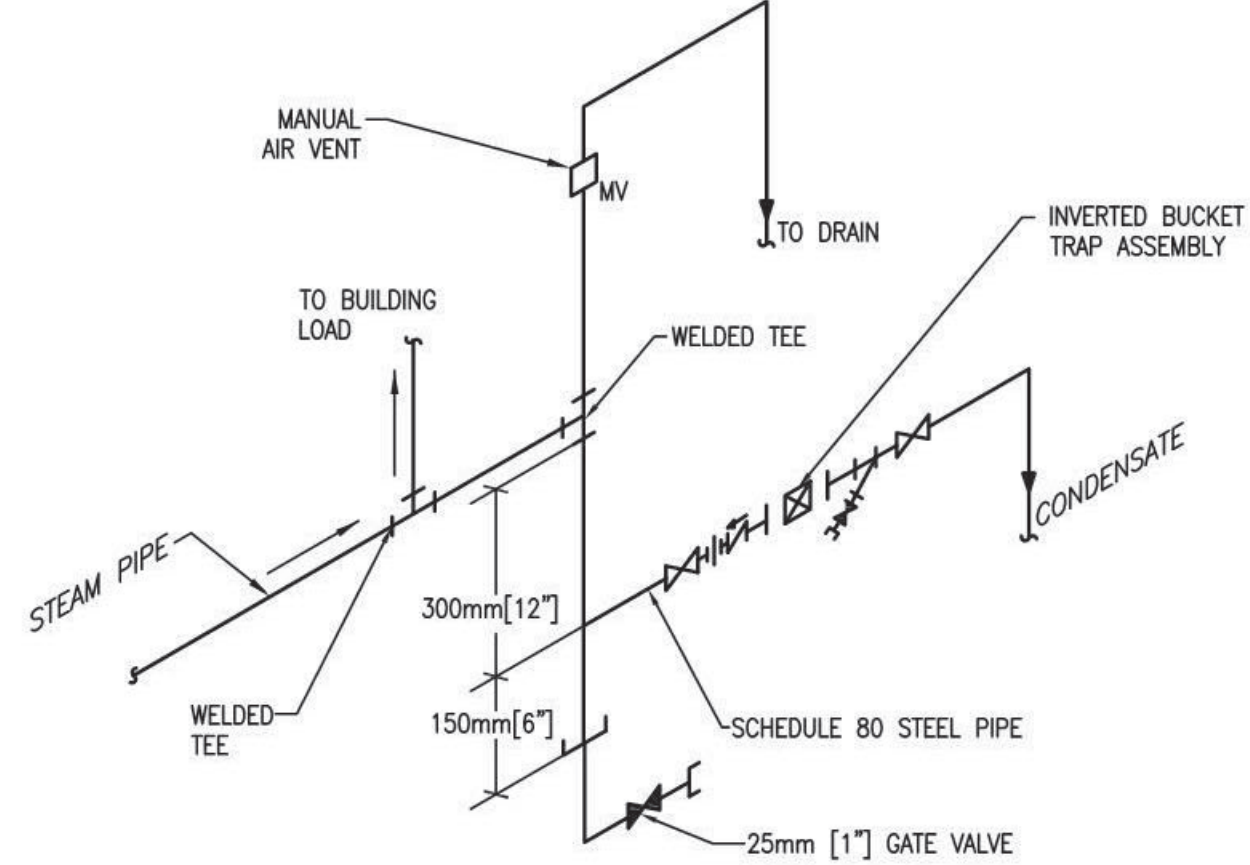
DIELECTRIC FITTING WHERE RETURN IS COPPER PIPE

NOTE: ALL DRIP POINTS ON STEAM MAINS SHALL BE PROVIDED WITH A 300mm [12"] MINIMUM HIGH DRIP LEG FROM BOTTOM OF STEAM MAIN TO TRAP INLET. DRIP LEG SHALL HAVE 150mm [6"] SCALE POCKET BELOW TRAP INLET.



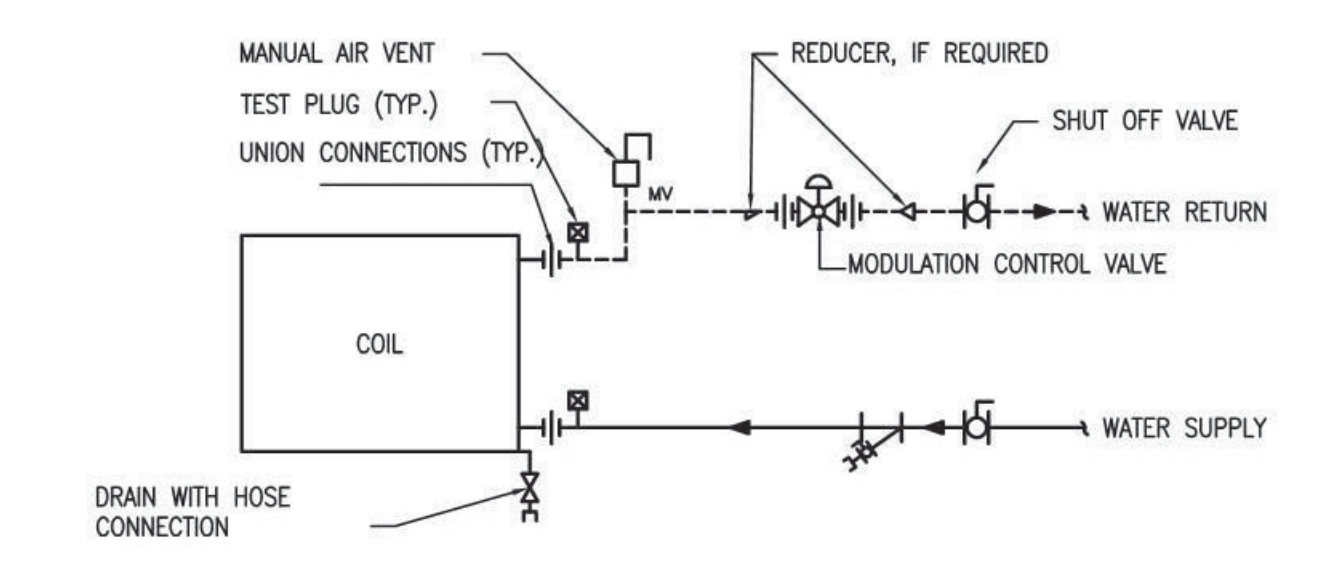
**HYDRONIC MANUAL AIR VENT (M.A.V.) DETAIL**

NOT TO SCALE



**END OF STEAM LINE DRIP TRAP**

NTS



**TERMINAL UNIT WATER COILS - PIPING CONNECTIONS**

NTS

FULLY SPRINKLERED

Revisions:	Date:

**CONSULTANT**

Consultant:

CMTA CONSULTING ENGINEERS, INC.  
10411 MEETING STREET  
PROSPECT, KY 40059  
(502)326-3085

**ARCHITECT/ENGINEER OF RECORD**

A/E:

GUIDON DESIGN INC.  
1221 N PENNSYLVANIA STREET  
INDIANAPOLIS, IN 46202  
(502)326-3085

**STAMP**

MEYNEETH L. SEIBERT  
LICENSED PROFESSIONAL ENGINEER  
20405

Office of  
Construction  
and Facilities  
Management

VA U.S. Department  
of Veterans Affairs

Drawing Title  
**MECHANICAL DETAILS**

Approved:

Phase  
**BID DOCUMENTS**

Project Title  
**VA WICHITA - MED/SURG BEDS FOR PATIENT PRIVACY**

Location  
**WICHITA, KANSAS**

Issue Date  
05/22/2020

Checked

Drawn

Project Number  
589-701

Building Number  
1 & 1C

Drawing Number  
**MH500**

C:\Users\jgall\Documents\WVNR19 MECH R18 2 - jgallsB\JM1.rvt