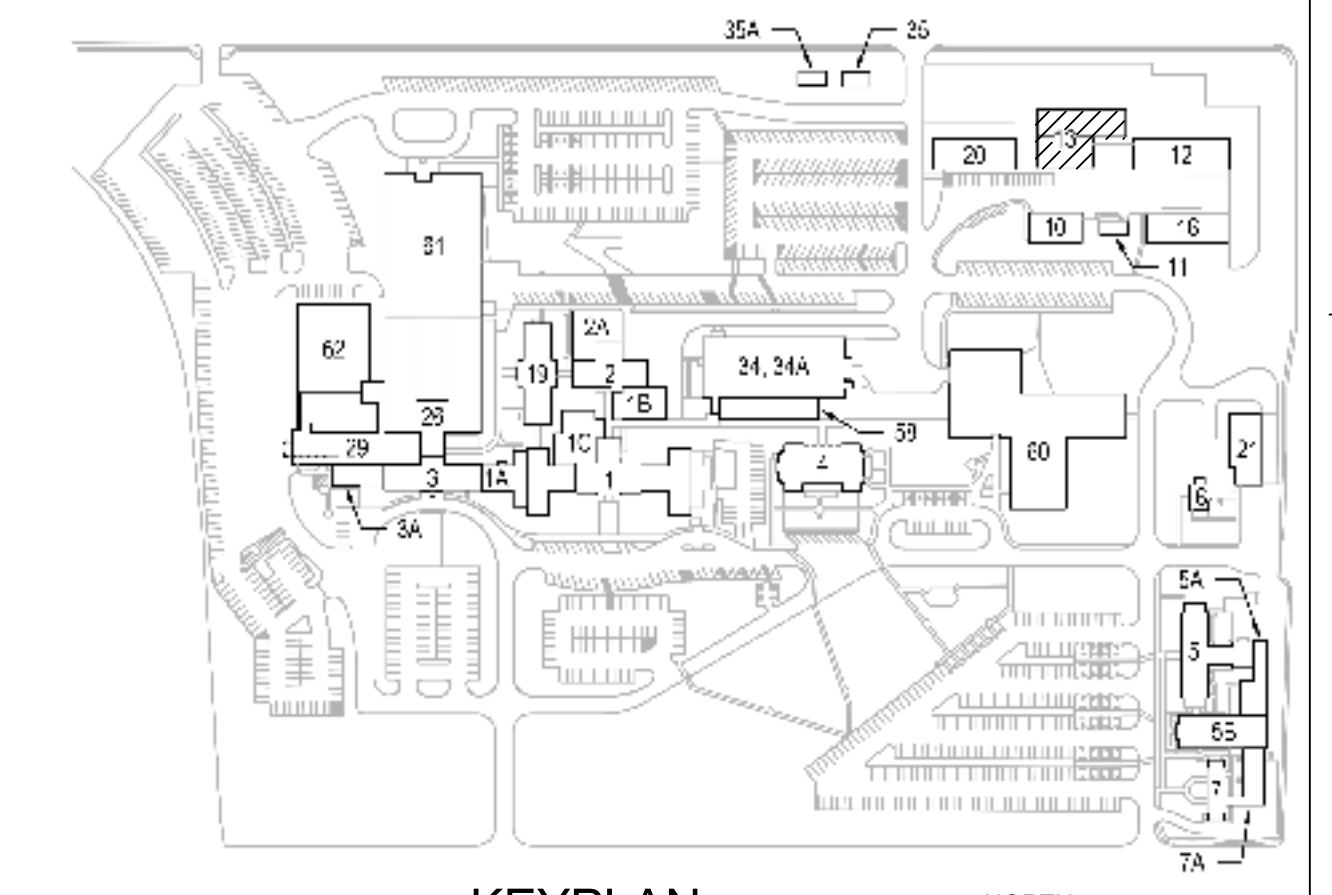
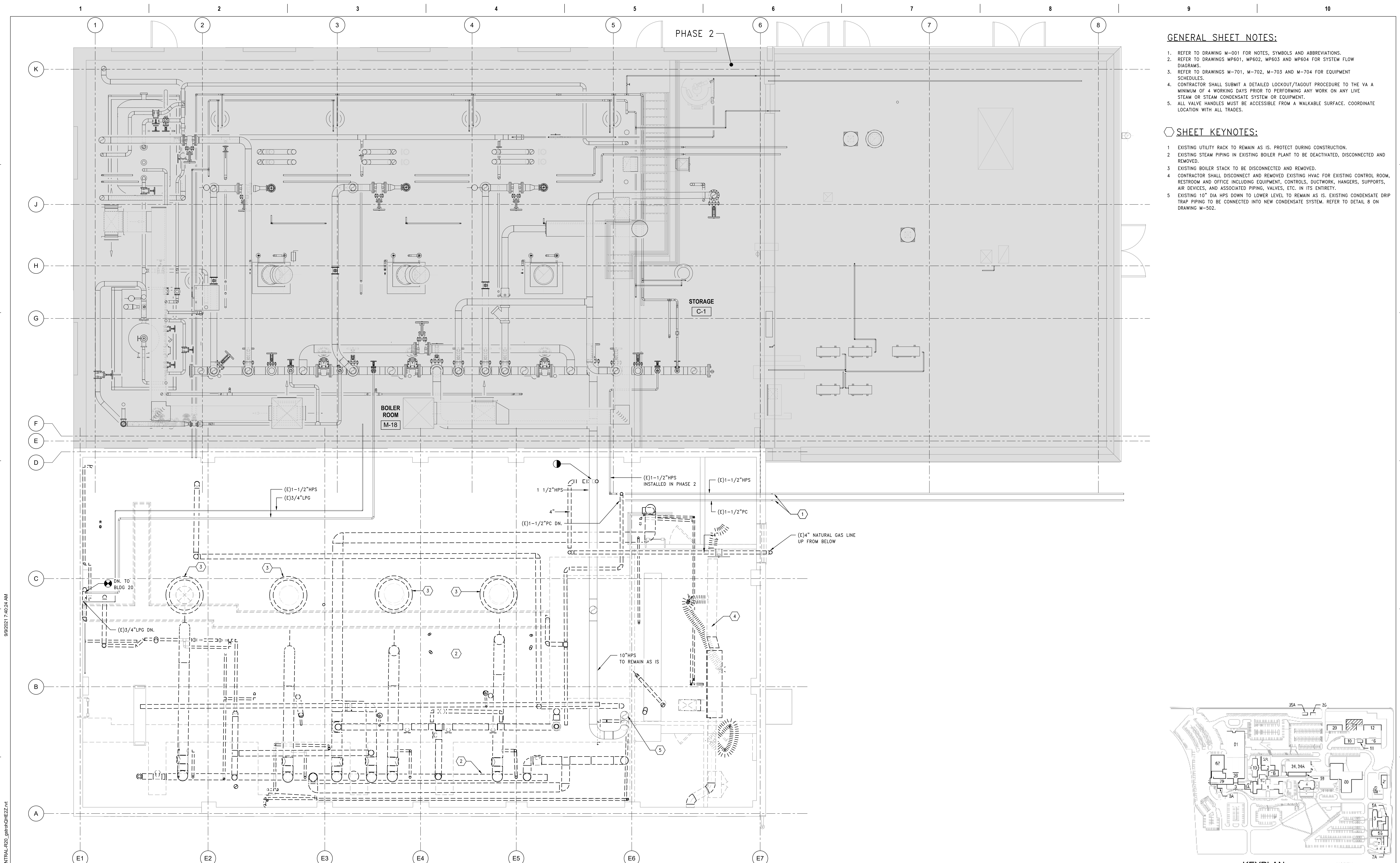


GENERAL SHEET NOTES:

1. REFER TO DRAWING M-001 FOR NOTES, SYMBOLS AND ABBREVIATIONS.
2. REFER TO DRAWINGS MP601, MP602, MP603 AND MP604 FOR SYSTEM FLOW DIAGRAMS.
3. REFER TO DRAWINGS M-701, M-702, M-703 AND M-704 FOR EQUIPMENT SCHEDULES.
4. CONTRACTOR SHALL SUBMIT A DETAILED LOCKOUT/TAGOUT PROCEDURE TO THE VA A MINIMUM OF 4 WORKING DAYS PRIOR TO PERFORMING ANY WORK ON ANY LIVE STEAM OR STEAM CONDENSATE SYSTEM OR EQUIPMENT.
5. ALL VALVE HANDLES MUST BE ACCESSIBLE FROM A WALKABLE SURFACE. COORDINATE LOCATION WITH ALL TRADES.

SHEET KEYNOTES:

- 1 EXISTING UTILITY RACK TO REMAIN AS IS. PROTECT DURING CONSTRUCTION.
- 2 EXISTING STEAM PIPING IN EXISTING BOILER PLANT TO BE DEACTIVATED, DISCONNECTED AND REMOVED.
- 3 EXISTING BOILER STACK TO BE DISCONNECTED AND REMOVED.
- 4 CONTRACTOR SHALL DISCONNECT AND REMOVE EXISTING HVAC FOR EXISTING CONTROL ROOM, RESTROOM AND OFFICE INCLUDING EQUIPMENT, CONTROLS, DUCTWORK, HANGERS, SUPPORTS, AIR DEVICES, AND ASSOCIATED PIPING, VALVES, ETC. IN ITS ENTIRETY.
- 5 EXISTING 10" DIA HPS DOWN TO LOWER LEVEL TO REMAIN AS IS. EXISTING CONDENSATE DRIP TRAP PIPING TO BE CONNECTED INTO NEW CONDENSATE SYSTEM. REFER TO DETAIL 8 ON DRAWING M-502.



MECHANICAL DEMOLITION PLAN - EXISTING CATWALK & CATWALK LEVELS, PHASE 3
 SCALE: 1/4" = 1'-0"

PRINTS OF THIS DRAWING SHALL NOT BE USED FOR ANY PURPOSE WHATSOEVER WITHOUT THE SEAL AND SIGNATURE OF THE PROFESSIONAL ENGINEER

NO.	DESCRIPTION	DATE

CONSULTANTS

<p>HAZARDOUS MATERIALS MABBETT & ASSOCIATES, INC. 105 CENTRAL STREET, STONEHAM, MA 02180 PHONE: (781)275-8050</p>	<p>FIRE SUPPRESSION KOFFEL ASSOCIATES 8815 CENTRE PARK DRIVE, SUITE 200, COLUMBIA, MD 21045 PHONE: (410)753-2246</p>
<p>CIVIL / STRUCTURAL PROFESSIONAL ENGINEERING CONSULTANTS, P.A. 303 SOUTH TOPEKA, WICHITA, KS 67202 PHONE: (316)262-2691</p>	<p>ELECTRONIC SECURITY MAGNA ENGINEERS 861 CORPORATE DRIVE, SUITE 210, LEXINGTON, KY 40503 PHONE: (859)309-2990</p>
<p>ARCHITECTURAL OCULUS INC. 1 SOUTH MEMORIAL DRIVE, SUITE 1500, SAINT LOUIS, MO 63102 PHONE: (314)367-8100</p>	<p>PHYSICAL SECURITY FORCE PROTECT 3210 GULF BLVD, UNIT 304, BELLAIR BEACH, FL 33786 PHONE: (502)836-4232</p>

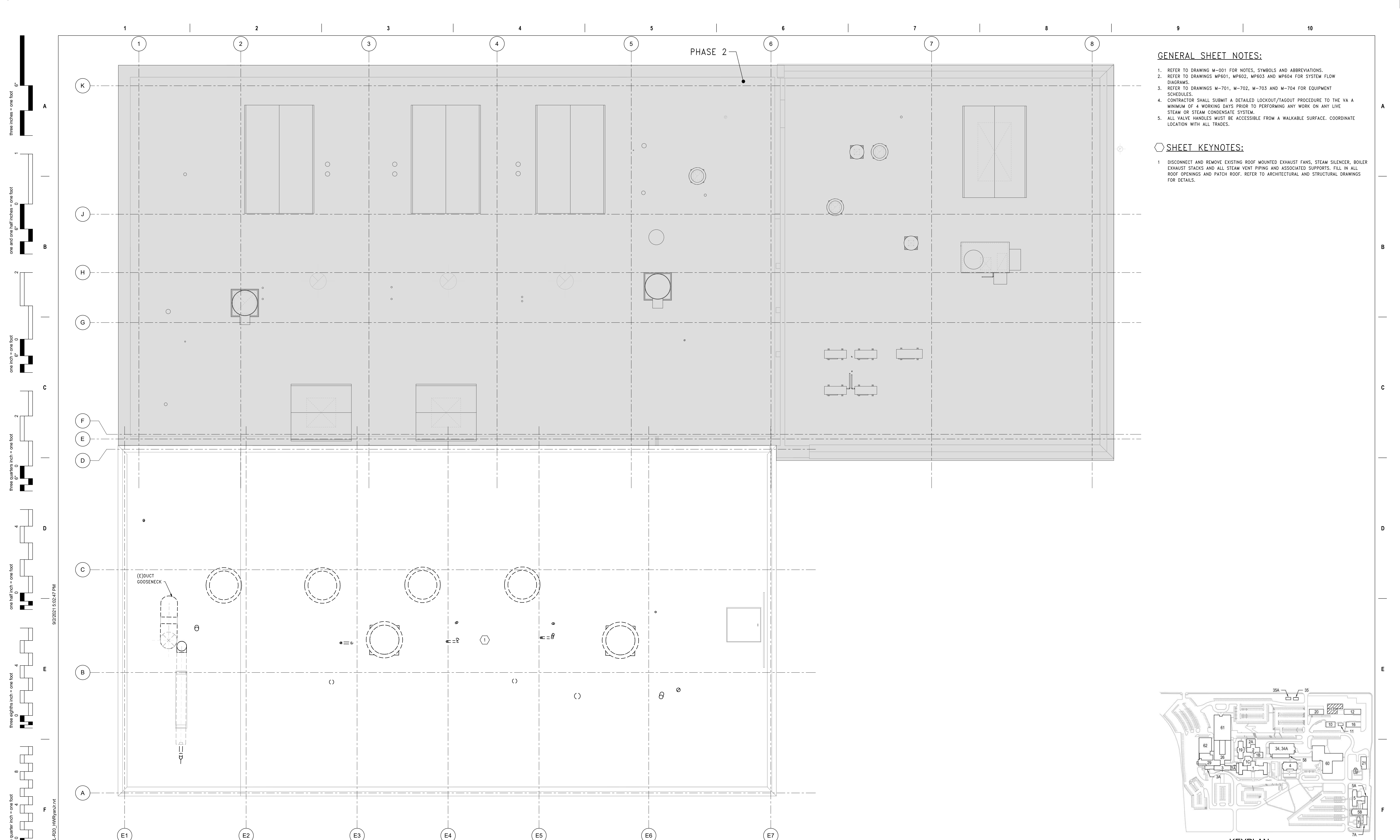
ENGINEER OF RECORD

<p>Miller-Remick LLC M.E.P. & Structural Engineering A Services Disabled Veteran Owned Small Business 1010 KINGS HIGHWAY SOUTH CHERRY HILL, NEW JERSEY 08034 PHONE: (856)424-4000 FAX: (856)420-8002 MR PROJECT NO: 0499-0121</p>	<p>MILLER-REMIK LLC PROFESSIONAL ENGINEER ANTHONY D. PACIORDI LICENSED PROFESSIONAL ENGINEER KANSAS 26413 07-3-2021</p>
--	--

Office of Construction and Facilities Management

U.S. Department of Veterans Affairs

<p>Drawing Title MECHANICAL DEMOLITION PLAN EX CATWALK & CATWALK LVLS, PH 3</p>	<p>Phase 100% BID SET</p>
<p>Approved: Project Director</p>	<p>Project Title INSTALL NEW BOILERS IN BUILDING 13</p>
<p>Project Number 589A7-18-302</p>	<p>Building Number 13</p>
<p>Drawing Number 13-MD121.03</p>	<p>Location ROBERT J. DOLE VA MEDICAL CENTER WICHITA, KANSAS</p>
<p>Issue Date 2021-09-03</p>	<p>Checked AP</p>
<p>Drawn GDS</p>	<p> </p>



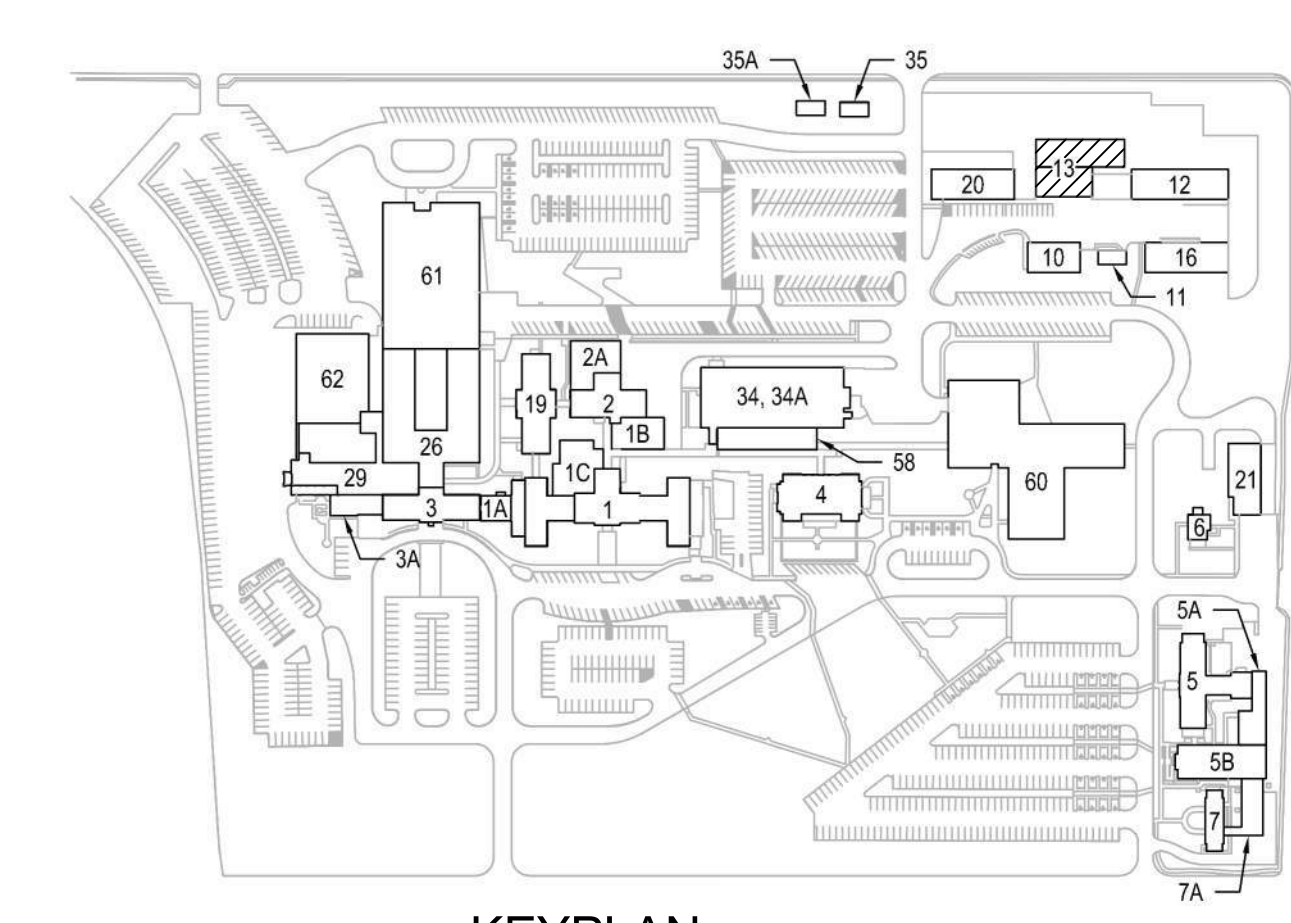
GENERAL SHEET NOTES:

1. REFER TO DRAWING M-001 FOR NOTES, SYMBOLS AND ABBREVIATIONS.
2. REFER TO DRAWINGS MP601, MP602, MP603 AND MP604 FOR SYSTEM FLOW DIAGRAMS.
3. REFER TO DRAWINGS M-701, M-702, M-703 AND M-704 FOR EQUIPMENT SCHEDULES.
4. CONTRACTOR SHALL SUBMIT A DETAILED LOCKOUT/TAGOUT PROCEDURE TO THE VA A MINIMUM OF 4 WORKING DAYS PRIOR TO PERFORMING ANY WORK ON ANY LIVE STEAM OR STEAM CONDENSATE SYSTEM.
5. ALL VALVE HANDLES MUST BE ACCESSIBLE FROM A WALKABLE SURFACE. COORDINATE LOCATION WITH ALL TRADES.

SHEET KEYNOTES:

- 1 DISCONNECT AND REMOVE EXISTING ROOF MOUNTED EXHAUST FANS, STEAM SILENCER, BOILER EXHAUST STACKS AND ALL STEAM VENT PIPING AND ASSOCIATED SUPPORTS. FILL IN ALL ROOF OPENINGS AND PATCH ROOF. REFER TO ARCHITECTURAL AND STRUCTURAL DRAWINGS FOR DETAILS.

1 MECHANICAL DEMOLITION PLAN - ROOF, PHASE 3
SCALE: 1/4" = 1'-0"



PRINTS OF THIS DRAWING SHALL NOT BE USED FOR ANY PURPOSE WHATSOEVER WITHOUT THE SEAL AND SIGNATURE OF THE PROFESSIONAL ENGINEER

NO.	DESCRIPTION	DATE

CONSULTANTS

<p>HAZARDOUS MATERIALS MABBETT & ASSOCIATES, INC. 105 CENTRAL STREET, STONEHAM, MA 02180 PHONE: (781)275-8555</p> <p>CIVIL / STRUCTURAL PROFESSIONAL ENGINEERING CONSULTANTS, P.A. 303 SOUTH TOPEKA, WICHITA, KS 67202 PHONE: (316)262-2691</p> <p>ARCHITECTURAL OCULUS INC. 1 SOUTH MEMORIAL DRIVE, SUITE 1500, SAINT LOUIS, MO 63102 PHONE: (314)367-8100</p>	<p>FIRE SUPPRESSION KOFFEL ASSOCIATES 8815 CENTRE PARK DRIVE, SUITE 200, COLUMBIA, MD 21045 PHONE: (410)753-2246</p> <p>ELECTRONIC SECURITY MAGNA ENGINEERS 861 CORPORATE DRIVE, SUITE 210, LEXINGTON, KY 40503 PHONE: (859)309-2990</p> <p>PHYSICAL SECURITY FORCE PROTECT 3210 GULF BLVD, UNIT 304, BELLEAIR BEACH, FL 33786 PHONE: (502)836-4232</p>
--	--

ENGINEER OF RECORD

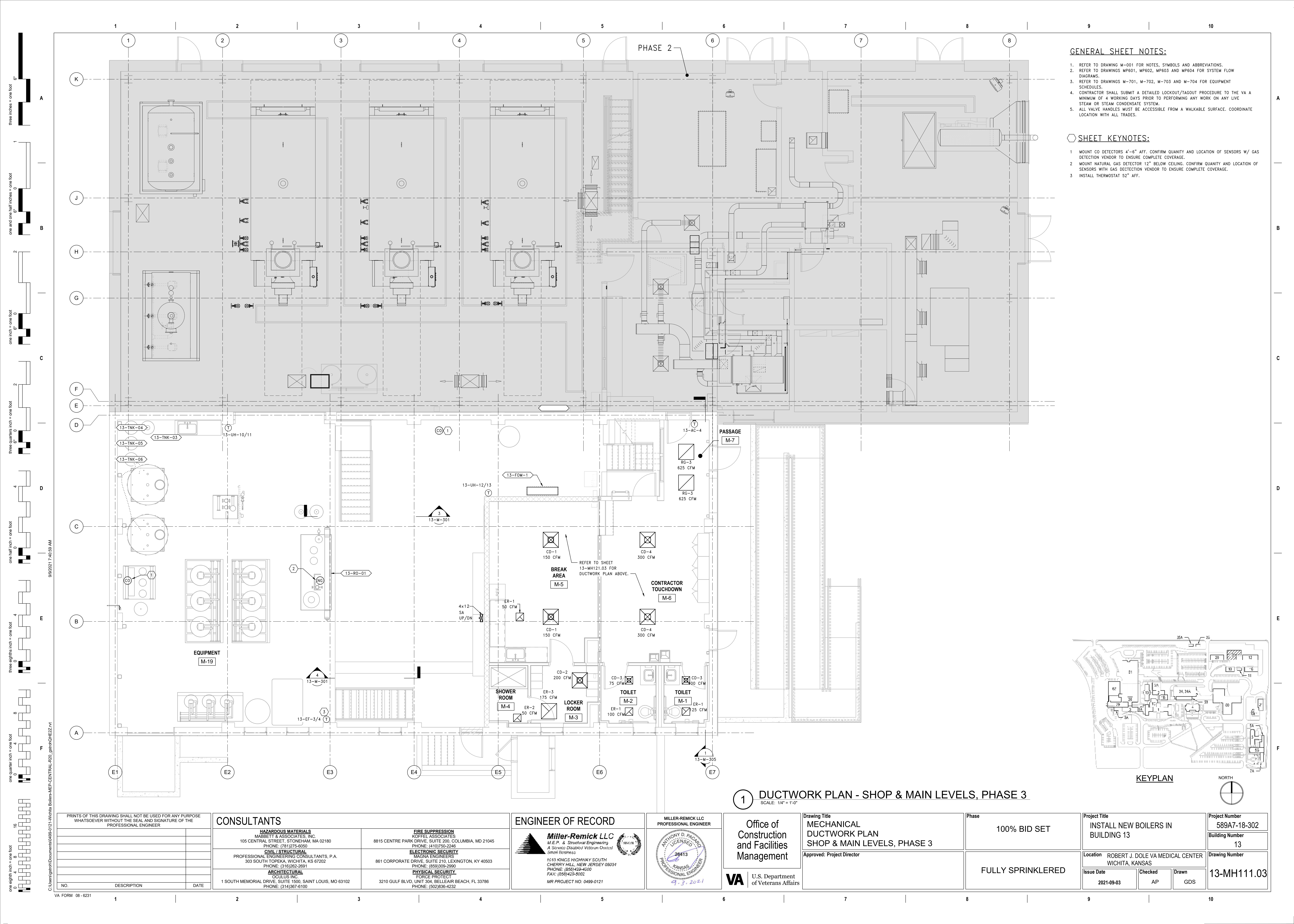
<p>Miller-Remick LLC M.E.P. & Structural Engineering A Service Disabled Veteran Owned Small Business 1010 KINGS HIGHWAY SOUTH CHERRY HILL, NEW JERSEY 08034 PHONE: (856)429-4000 FAX: (856)429-9002 MR PROJECT NO: 0499-0121</p>	<p>MILLER-REMIK LLC PROFESSIONAL ENGINEER ANTHONY D. PACIARO LICENSED PROFESSIONAL ENGINEER KANSAS 26413 9.3.2021</p>
---	--

Office of Construction and Facilities Management

U.S. Department of Veterans Affairs

<p>Drawing Title MECHANICAL DEMOLITION PLAN ROOF, PHASE 3</p> <p>Approved: Project Director</p>	<p>Phase 100% BID SET</p> <p>FULLY SPRINKLERED</p>
--	--

<p>Project Title INSTALL NEW BOILERS IN BUILDING 13</p> <p>Location ROBERT J. DOLE VA MEDICAL CENTER WICHITA, KANSAS</p> <p>Issue Date 2021-09-03</p>	<p>Checked AP</p> <p>Drawn GDS</p>	<p>Project Number 589A7-18-302</p> <p>Building Number 13</p> <p>Drawing Number 13-MD131.03</p>
--	--	---



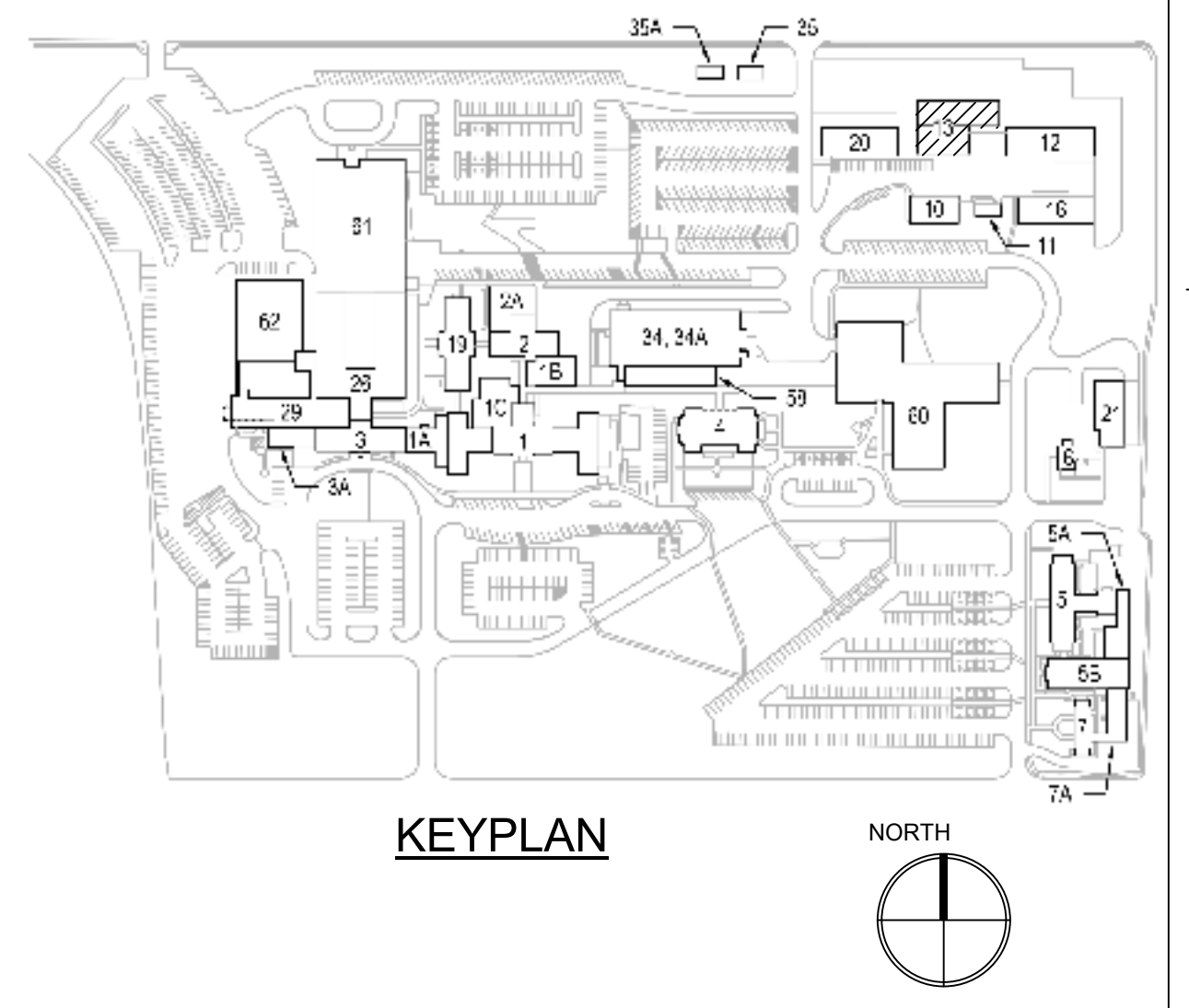
GENERAL SHEET NOTES:

1. REFER TO DRAWING M-001 FOR NOTES, SYMBOLS AND ABBREVIATIONS.
2. REFER TO DRAWINGS MP601, MP602, MP603 AND MP604 FOR SYSTEM FLOW DIAGRAMS.
3. REFER TO DRAWINGS M-701, M-702, M-703 AND M-704 FOR EQUIPMENT SCHEDULES.
4. CONTRACTOR SHALL SUBMIT A DETAILED LOCKOUT/TAGOUT PROCEDURE TO THE VA A MINIMUM OF 4 WORKING DAYS PRIOR TO PERFORMING ANY WORK ON ANY LIVE STEAM OR STEAM CONDENSATE SYSTEM.
5. ALL VALVE HANDLES MUST BE ACCESSIBLE FROM A WALKABLE SURFACE. COORDINATE LOCATION WITH ALL TRADES.

SHEET KEYNOTES:

- 1 MOUNT CO DETECTORS 4"-6" AFF. CONFIRM QUANTITY AND LOCATION OF SENSORS W/ GAS DETECTION VENDOR TO ENSURE COMPLETE COVERAGE.
- 2 MOUNT NATURAL GAS DETECTOR 12" BELOW CEILING. CONFIRM QUANTITY AND LOCATION OF SENSORS WITH GAS DETECTION VENDOR TO ENSURE COMPLETE COVERAGE.
- 3 INSTALL THERMOSTAT 52" AFF.

1 DUCTWORK PLAN - SHOP & MAIN LEVELS, PHASE 3
SCALE: 1/4" = 1'-0"



PRINTS OF THIS DRAWING SHALL NOT BE USED FOR ANY PURPOSE WHATSOEVER WITHOUT THE SEAL AND SIGNATURE OF THE PROFESSIONAL ENGINEER

NO.	DESCRIPTION	DATE

CONSULTANTS

<p>HAZARDOUS MATERIALS MABBETT & ASSOCIATES, INC. 105 CENTRAL STREET, STONEHAM, MA 02180 PHONE: (781)275-8050</p> <p>CIVIL / STRUCTURAL PROFESSIONAL ENGINEERING CONSULTANTS, P.A. 303 SOUTH TOPEKA, WICHITA, KS 67202 PHONE: (316)262-2691</p> <p>ARCHITECTURAL OCULUS INC. 1 SOUTH MEMORIAL DRIVE, SUITE 1500, SAINT LOUIS, MO 63102 PHONE: (314)367-6100</p>	<p>FIRE SUPPRESSION KOFFEL ASSOCIATES 8815 CENTRE PARK DRIVE, SUITE 200, COLUMBIA, MD 21045 PHONE: (410)759-2246</p> <p>ELECTRONIC SECURITY MAGNA ENGINEERS 861 CORPORATE DRIVE, SUITE 210, LEXINGTON, KY 40503 PHONE: (859)309-2990</p> <p>PHYSICAL SECURITY FORCE PROTECT 3210 GULF BLVD, UNIT 304, BELLAIR BEACH, FL 33786 PHONE: (502)836-4232</p>
--	---

ENGINEER OF RECORD

<p>Miller-Remick LLC M.E.P. & Structural Engineering A Service Disabled Veteran Owned Small Business 1010 KINGS HIGHWAY SOUTH CHERRY HILL, NEW JERSEY 08034 PHONE: (856)424-4000 FAX: (856)424-9022 MR PROJECT NO: 0499-0121</p>	<p>MILLER-REMICK LLC PROFESSIONAL ENGINEER ANTHONY D. PACORD LICENSED 26413 KANSAS PROFESSIONAL ENGINEER 9.3.2021</p>
---	--

Office of Construction and Facilities Management

U.S. Department of Veterans Affairs

<p>Drawing Title MECHANICAL DUCTWORK PLAN SHOP & MAIN LEVELS, PHASE 3</p> <p>Approved: Project Director</p>	<p>Phase 100% BID SET</p> <p>FULLY SPRINKLERED</p>
--	--

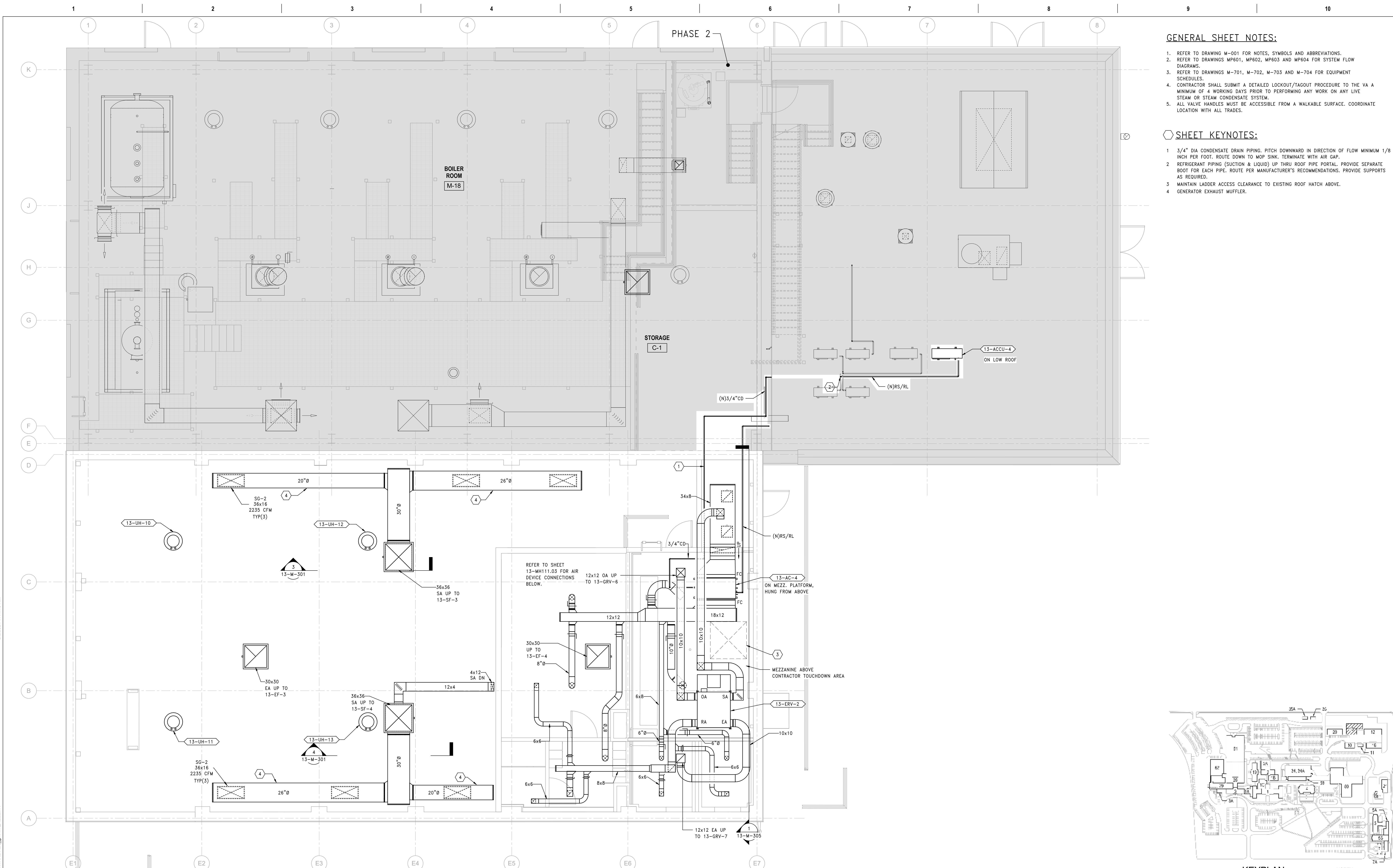
<p>Project Title INSTALL NEW BOILERS IN BUILDING 13</p>	<p>Project Number 589A7-18-302</p> <p>Building Number 13</p>
<p>Location ROBERT J. DOLE VA MEDICAL CENTER WICHITA, KANSAS</p>	<p>Drawing Number 13-MH111.03</p>
<p>Issue Date 2021-09-03</p>	<p>Checked AP</p> <p>Drawn GDS</p>

GENERAL SHEET NOTES:

1. REFER TO DRAWING M-001 FOR NOTES, SYMBOLS AND ABBREVIATIONS.
2. REFER TO DRAWINGS MP601, MP602, MP603 AND MP604 FOR SYSTEM FLOW DIAGRAMS.
3. REFER TO DRAWINGS M-701, M-702, M-703 AND M-704 FOR EQUIPMENT SCHEDULES.
4. CONTRACTOR SHALL SUBMIT A DETAILED LOCKOUT/TAGOUT PROCEDURE TO THE VA A MINIMUM OF 4 WORKING DAYS PRIOR TO PERFORMING ANY WORK ON ANY LIVE STEAM OR STEAM CONDENSATE SYSTEM.
5. ALL VALVE HANDLES MUST BE ACCESSIBLE FROM A WALKABLE SURFACE. COORDINATE LOCATION WITH ALL TRADES.

SHEET KEYNOTES:

1. 3/4" DIA CONDENSATE DRAIN PIPING, PITCH DOWNWARD IN DIRECTION OF FLOW MINIMUM 1/8" INCH PER FOOT. ROUTE DOWN TO MOP SINK. TERMINATE WITH AIR GAP.
2. REFRIGERANT PIPING (SUCTION & LIQUID) UP THRU ROOF PIPE PORTAL. PROVIDE SEPARATE BOOT FOR EACH PIPE. ROUTE PER MANUFACTURER'S RECOMMENDATIONS. PROVIDE SUPPORTS AS REQUIRED.
3. MAINTAIN LADDER ACCESS CLEARANCE TO EXISTING ROOF HATCH ABOVE.
4. GENERATOR EXHAUST MUFFLER.



1 DUCTWORK PLAN - EXISTING CATWALK & CATWALK LEVELS, PHASE 3
SCALE: 1/4" = 1'-0"

PRINTS OF THIS DRAWING SHALL NOT BE USED FOR ANY PURPOSE WHATSOEVER WITHOUT THE SEAL AND SIGNATURE OF THE PROFESSIONAL ENGINEER

NO.	DESCRIPTION	DATE

CONSULTANTS

<p>HAZARDOUS MATERIALS MABBETT & ASSOCIATES, INC. 105 CENTRAL STREET, STONEHAM, MA 02180 PHONE: (781)275-8050</p> <p>CIVIL / STRUCTURAL PROFESSIONAL ENGINEERING CONSULTANTS, P.A. 303 SOUTH TOPEKA, WICHITA, KS 67202 PHONE: (316)262-2691</p> <p>ARCHITECTURAL OCULUS INC. 1 SOUTH MEMORIAL DRIVE, SUITE 1500, SAINT LOUIS, MO 63102 PHONE: (314)367-6100</p>	<p>FIRE SUPPRESSION KOFFEL ASSOCIATES 8815 CENTRE PARK DRIVE, SUITE 200, COLUMBIA, MD 21045 PHONE: (410)759-2246</p> <p>ELECTRONIC SECURITY MAGNA ENGINEERS 861 CORPORATE DRIVE, SUITE 210, LEXINGTON, KY 40503 PHONE: (859)309-2990</p> <p>PHYSICAL SECURITY FORCE PROTECT 3210 GULF BLVD, UNIT 304, BELLAIR BEACH, FL 33786 PHONE: (502)836-4232</p>
--	---

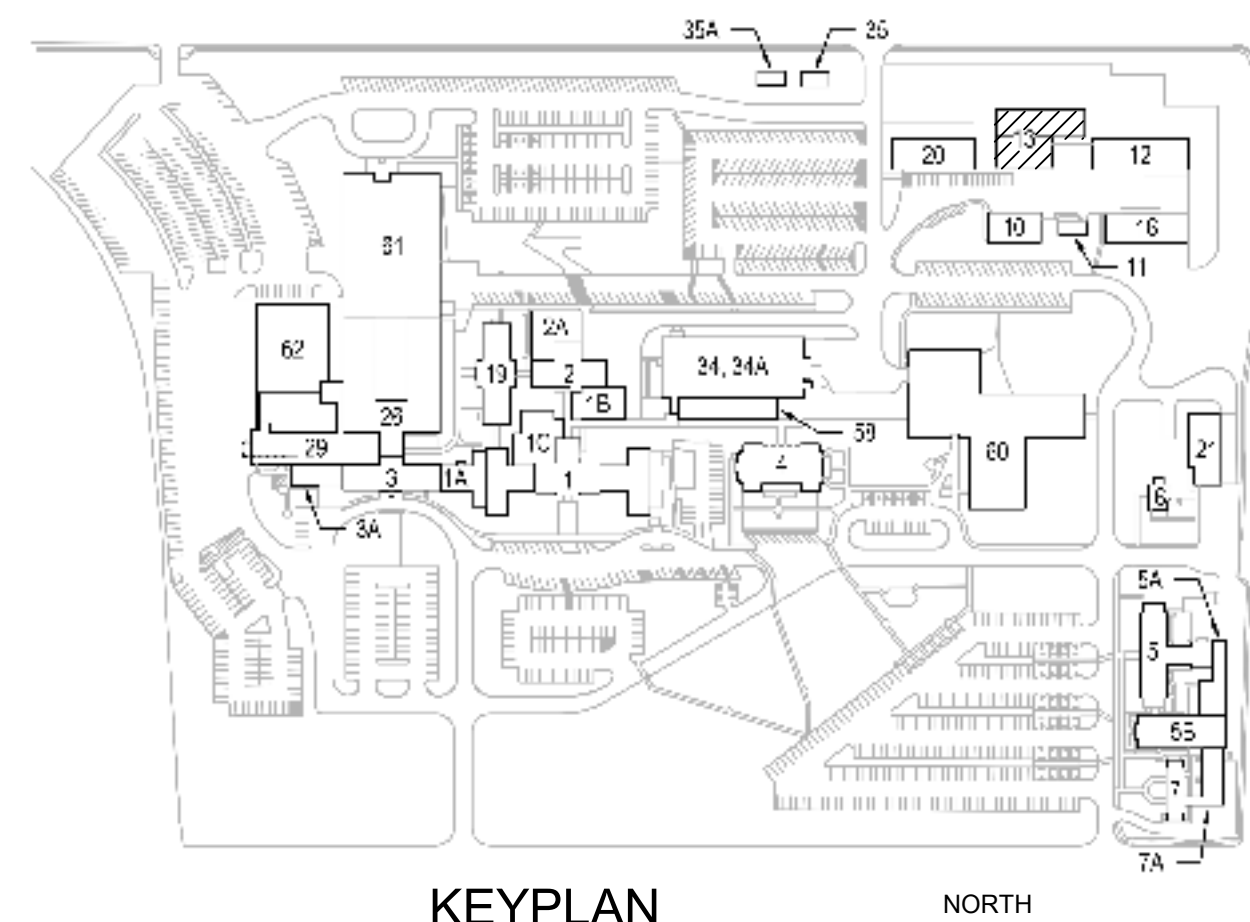
ENGINEER OF RECORD

<p>Miller-Remick LLC M.E.P. & Structural Engineering A Service Disabled Veteran Owned Small Business 1010 KINGS HIGHWAY SOUTH CHERRY HILL, NEW JERSEY 08034 PHONE: (856)424-4000 FAX: (856)420-8002 MR PROJECT NO: 0499-0121</p>	<p>MILLER-REMIK LLC PROFESSIONAL ENGINEER ANTHONY D. PACIPO LICENSED 26413 KANSAS PROFESSIONAL ENGINEER 09-3-2021</p>
---	--

<p>Office of Construction and Facilities Management VA U.S. Department of Veterans Affairs</p>	<p>Phase 100% BID SET</p>
---	-------------------------------

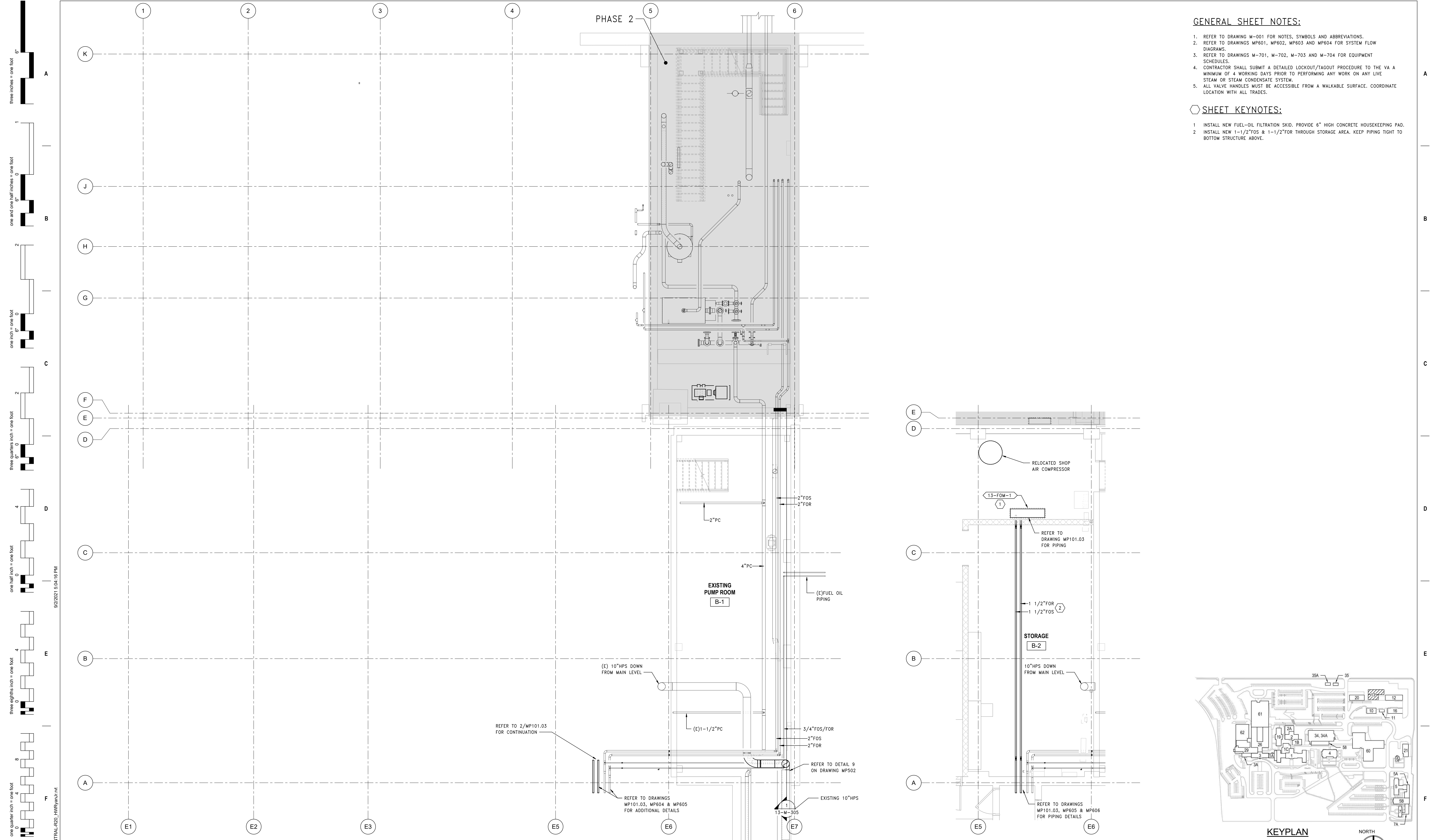
<p>Drawing Title MECHANICAL DUCTWORK PLAN EX CATWALK & CATWALK LVLS, PH 3</p> <p>Approved: Project Director</p>	<p>Project Title INSTALL NEW BOILERS IN BUILDING 13</p> <p>Location ROBERT J. DOLE VA MEDICAL CENTER WICHITA, KANSAS</p>
--	---

<p>Project Number 589A7-18-302</p> <p>Building Number 13</p> <p>Drawing Number 13-MH121.03</p>	<p>Issue Date 2021-09-03</p> <p>Checked AP</p> <p>Drawn GDS</p>
---	---



C:\Users\gnh\Documents\0910121\Wichita Boilers\MEP-CENTRAL-R20_gmarch22.rvt 9/2/2021 7:41:15 AM

three inches = one foot
 one and one half inches = one foot
 one inch = one foot
 three quarters inch = one foot
 one half inch = one foot
 three eighths inch = one foot
 one quarter inch = one foot
 one eighth inch = one foot



GENERAL SHEET NOTES:

1. REFER TO DRAWING M-001 FOR NOTES, SYMBOLS AND ABBREVIATIONS.
2. REFER TO DRAWINGS MP601, MP602, MP603 AND MP604 FOR SYSTEM FLOW DIAGRAMS.
3. REFER TO DRAWINGS M-701, M-702, M-703 AND M-704 FOR EQUIPMENT SCHEDULES.
4. CONTRACTOR SHALL SUBMIT A DETAILED LOCKOUT/TAGOUT PROCEDURE TO THE VA A MINIMUM OF 4 WORKING DAYS PRIOR TO PERFORMING ANY WORK ON ANY LIVE STEAM OR STEAM CONDENSATE SYSTEM.
5. ALL VALVE HANDLES MUST BE ACCESSIBLE FROM A WALKABLE SURFACE. COORDINATE LOCATION WITH ALL TRADES.

SHEET KEYNOTES:

1. INSTALL NEW FUEL-OIL FILTRATION SKID. PROVIDE 6" HIGH CONCRETE HOUSEKEEPING PAD.
2. INSTALL NEW 1-1/2" FOS & 1-1/2" FOR THROUGH STORAGE AREA. KEEP PIPING TIGHT TO BOTTOM STRUCTURE ABOVE.

1 PIPING PLAN - TUNNEL & BASEMENT LEVELS, PHASE 3
SCALE: 1/4" = 1'-0"

2 PIPING PLAN - STORAGE B-2, PHASE 3
SCALE: 1/4" = 1'-0"

PRINTS OF THIS DRAWING SHALL NOT BE USED FOR ANY PURPOSE WHATSOEVER WITHOUT THE SEAL AND SIGNATURE OF THE PROFESSIONAL ENGINEER

NO.	DESCRIPTION	DATE

CONSULTANTS

<p>HAZARDOUS MATERIALS MABBETT & ASSOCIATES, INC. 105 CENTRAL STREET, STONEHAM, MA 02180 PHONE: (781)275-8555</p>	<p>FIRE SUPPRESSION KOFFEL ASSOCIATES 8815 CENTRE PARK DRIVE, SUITE 200, COLUMBIA, MD 21045 PHONE: (410)753-2246</p>
<p>CIVIL / STRUCTURAL PROFESSIONAL ENGINEERING CONSULTANTS, P.A. 303 SOUTH TOPEKA, WICHITA, KS 67202 PHONE: (316)262-2691</p>	<p>ELECTRONIC SECURITY MAGNA ENGINEERS 861 CORPORATE DRIVE, SUITE 210, LEXINGTON, KY 40503 PHONE: (859)309-2990</p>
<p>ARCHITECTURAL OCULUS INC. 1 SOUTH MEMORIAL DRIVE, SUITE 1500, SAINT LOUIS, MO 63102 PHONE: (314)367-8100</p>	<p>PHYSICAL SECURITY FORCE PROTECT 3210 GULF BLVD, UNIT 304, BELLSAIR BEACH, FL 33786 PHONE: (502)836-4232</p>

ENGINEER OF RECORD

<p>Miller-Remick LLC M.E.P. & Structural Engineering A Service Disabled Veteran Owned Small Business 1010 KINGS HIGHWAY SOUTH CHERRY HILL, NEW JERSEY 08034 PHONE: (856)429-4000 FAX: (856)429-9002 MR PROJECT NO: 0499-0121</p>	<p>MILLER-REMIK LLC PROFESSIONAL ENGINEER ANTHONY D. PAKARD LICENSED PROFESSIONAL ENGINEER KANSAS 26413 9.3.2021</p>
---	---

Office of Construction and Facilities Management

VA U.S. Department of Veterans Affairs

<p>Drawing Title MECHANICAL PIPING PLAN TUNNEL & BSMT LEVELS, PHASE 3</p>	<p>Phase 100% BID SET</p>
<p>Approved: Project Director</p>	<p>FULLY SPRINKLERED</p>

<p>Project Title INSTALL NEW BOILERS IN BUILDING 13</p>	<p>Project Number 589A7-18-302</p>
<p>Location ROBERT J. DOLE VA MEDICAL CENTER WICHITA, KANSAS</p>	<p>Building Number 13</p>
<p>Issue Date 2021-09-03</p>	<p>Checked AP</p>
<p>Drawn GDS</p>	<p>Drawing Number 13-MP101.03</p>

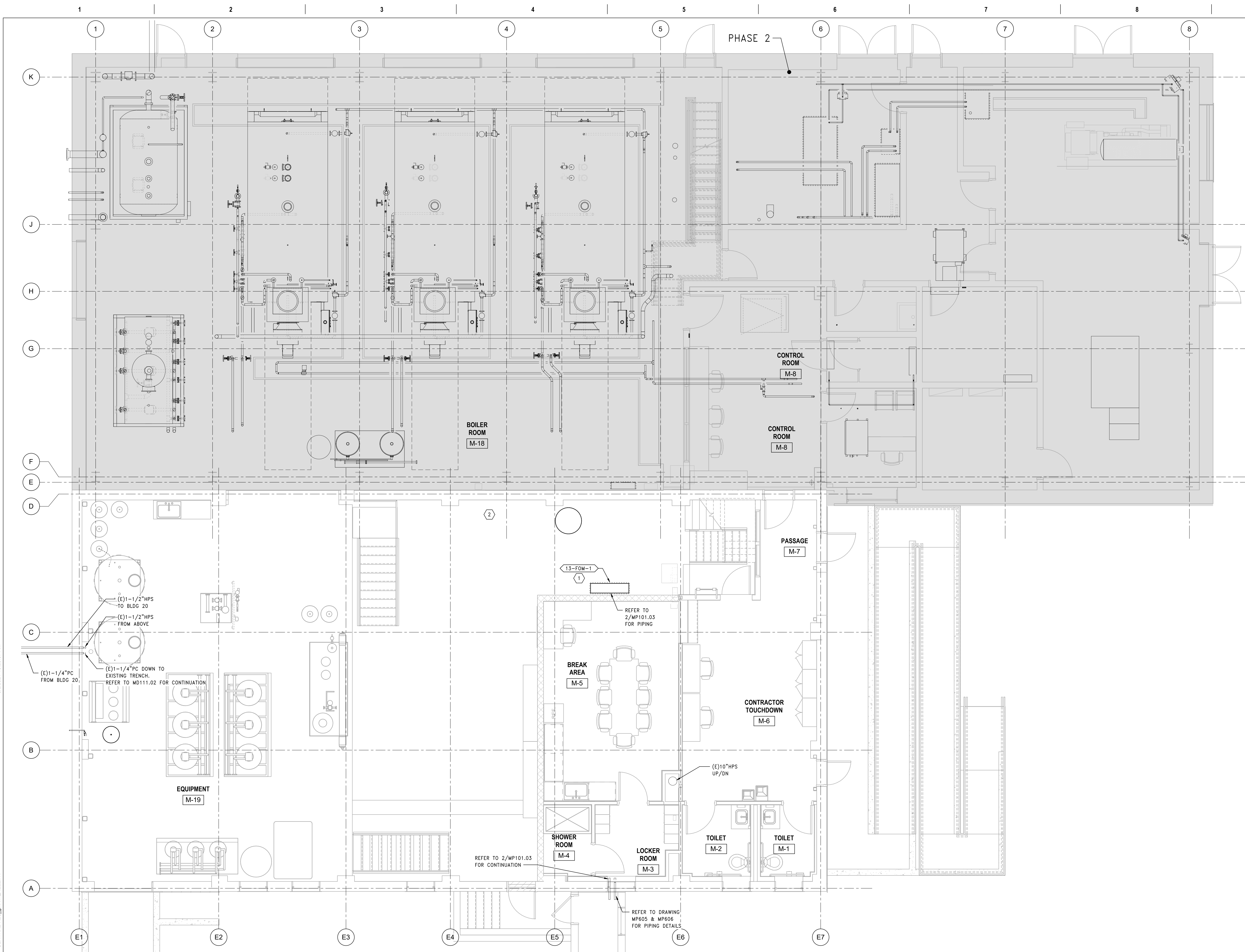
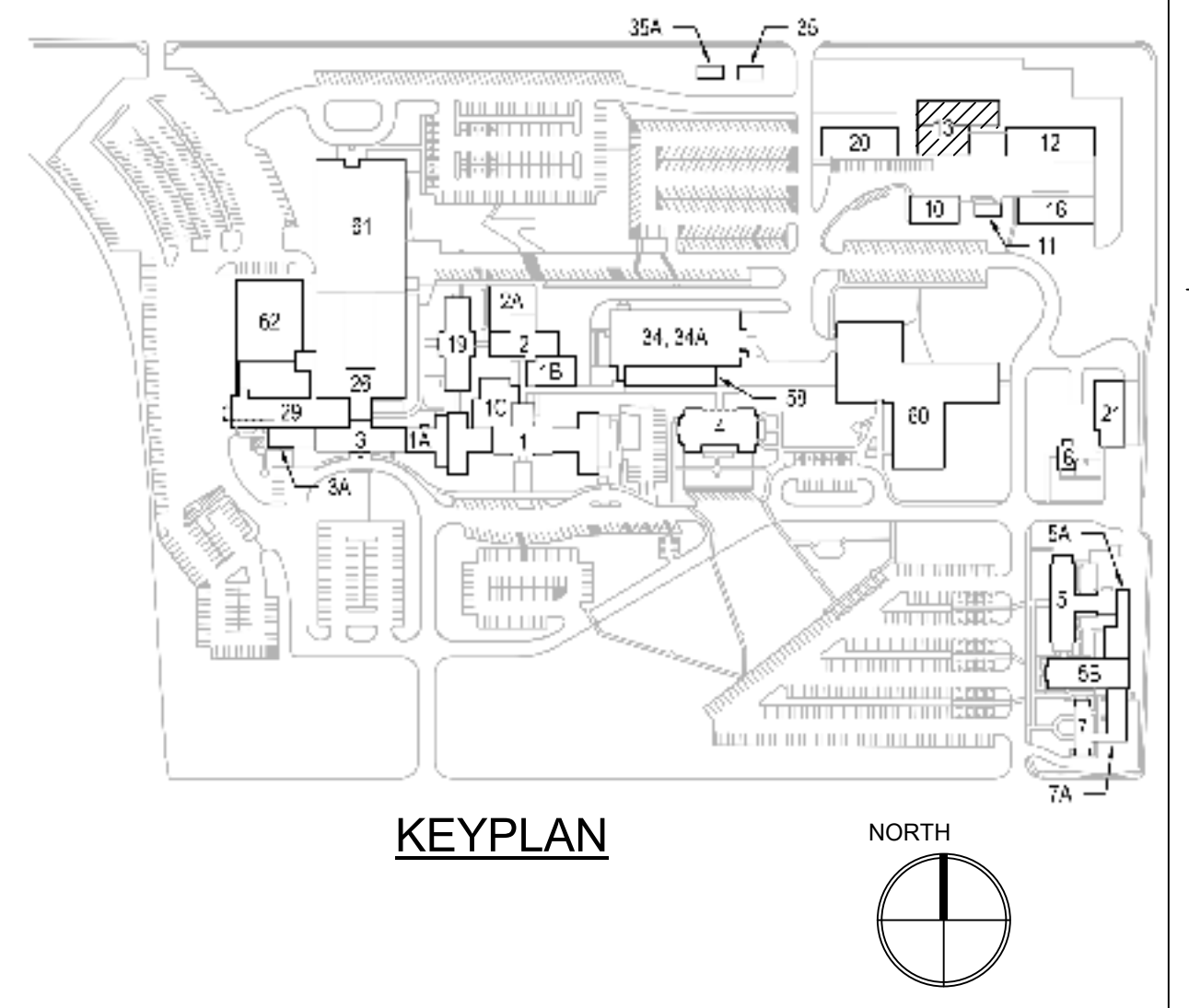
GENERAL SHEET NOTES:

1. REFER TO DRAWING M-001 FOR NOTES, SYMBOLS AND ABBREVIATIONS.
2. REFER TO DRAWINGS MP601, MP602, MP603 AND MP604 FOR SYSTEM FLOW DIAGRAMS.
3. REFER TO DRAWINGS M-701, M-702, M-703 AND M-704 FOR EQUIPMENT SCHEDULES.
4. CONTRACTOR SHALL SUBMIT A DETAILED LOCKOUT/TAGOUT PROCEDURE TO THE VA A MINIMUM OF 4 WORKING DAYS PRIOR TO PERFORMING ANY WORK ON ANY LIVE STEAM OR STEAM CONDENSATE SYSTEM.
5. ALL VALVE HANDLES MUST BE ACCESSIBLE FROM A WALKABLE SURFACE. COORDINATE LOCATION WITH ALL TRADES.

SHEET KEYNOTES:

1. INSTALL NEW FUEL-OIL FILTRATION SKID. PROVIDE 6" HIGH CONCRETE HOUSEKEEPING PAD.
2. REFER TO MH SERIES DRAWINGS FOR GAS DETECTION SENSOR LOCATIONS.

1 PIPING PLAN - SHOP & MAIN LEVELS, PHASE 3
SCALE: 1/4" = 1'-0"



PRINTS OF THIS DRAWING SHALL NOT BE USED FOR ANY PURPOSE WHATSOEVER WITHOUT THE SEAL AND SIGNATURE OF THE PROFESSIONAL ENGINEER

NO.	DESCRIPTION	DATE

CONSULTANTS

<p>HAZARDOUS MATERIALS MABBETT & ASSOCIATES, INC. 105 CENTRAL STREET, STONEHAM, MA 02180 PHONE: (781)275-8050</p> <p>CIVIL / STRUCTURAL PROFESSIONAL ENGINEERING CONSULTANTS, P.A. 303 SOUTH TOPEKA, WICHITA, KS 67202 PHONE: (316)262-2691</p> <p>ARCHITECTURAL OCULUS INC. 1 SOUTH MEMORIAL DRIVE, SUITE 1500, SAINT LOUIS, MO 63102 PHONE: (314)367-6100</p>	<p>FIRE SUPPRESSION KOFFEL ASSOCIATES 8815 CENTRE PARK DRIVE, SUITE 200, COLUMBIA, MD 21045 PHONE: (410)753-2246</p> <p>ELECTRONIC SECURITY MAGNA ENGINEERS 861 CORPORATE DRIVE, SUITE 210, LEXINGTON, KY 40503 PHONE: (859)309-2990</p> <p>PHYSICAL SECURITY FORCE PROTECT 3210 GULF BLVD, UNIT 304, BELLAIR BEACH, FL 33786 PHONE: (502)836-4232</p>
--	---

ENGINEER OF RECORD

<p>Miller-Remick LLC M.E.P. & Structural Engineering A Service Disabled Veteran Owned Small Business 1010 KINGS HIGHWAY SOUTH CHERRY HILL, NEW JERSEY 08034 PHONE: (856)424-4000 FAX: (856)424-8022 MR PROJECT NO: 0499-0121</p>	<p>MILLER-REMIK LLC PROFESSIONAL ENGINEER</p> <p>ANTHONY D. PACIOREK LICENSED PROFESSIONAL ENGINEER 26413 KANSAS PROFESSIONAL ENGINEER 9.3.2021</p>
---	---

Office of Construction and Facilities Management

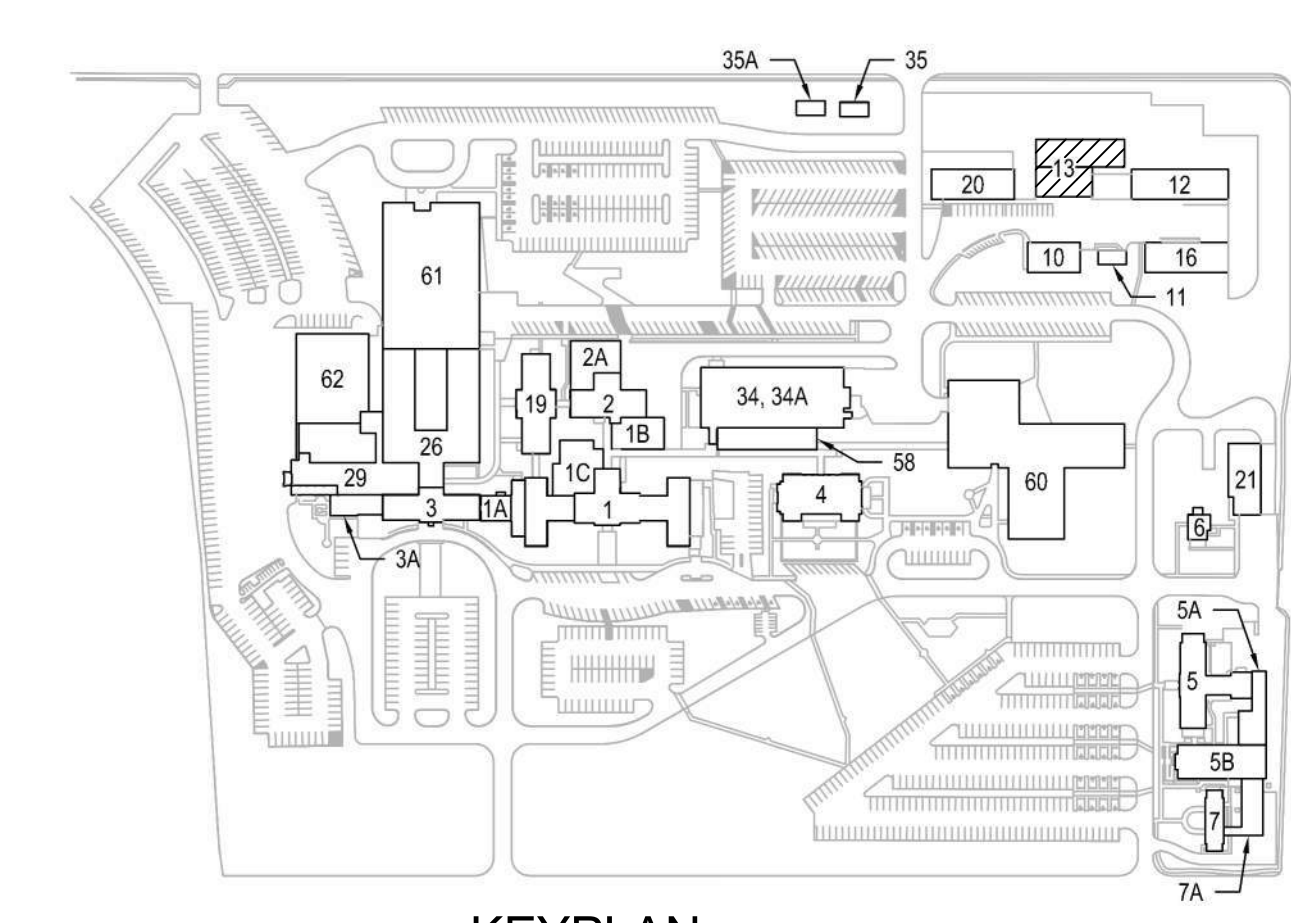
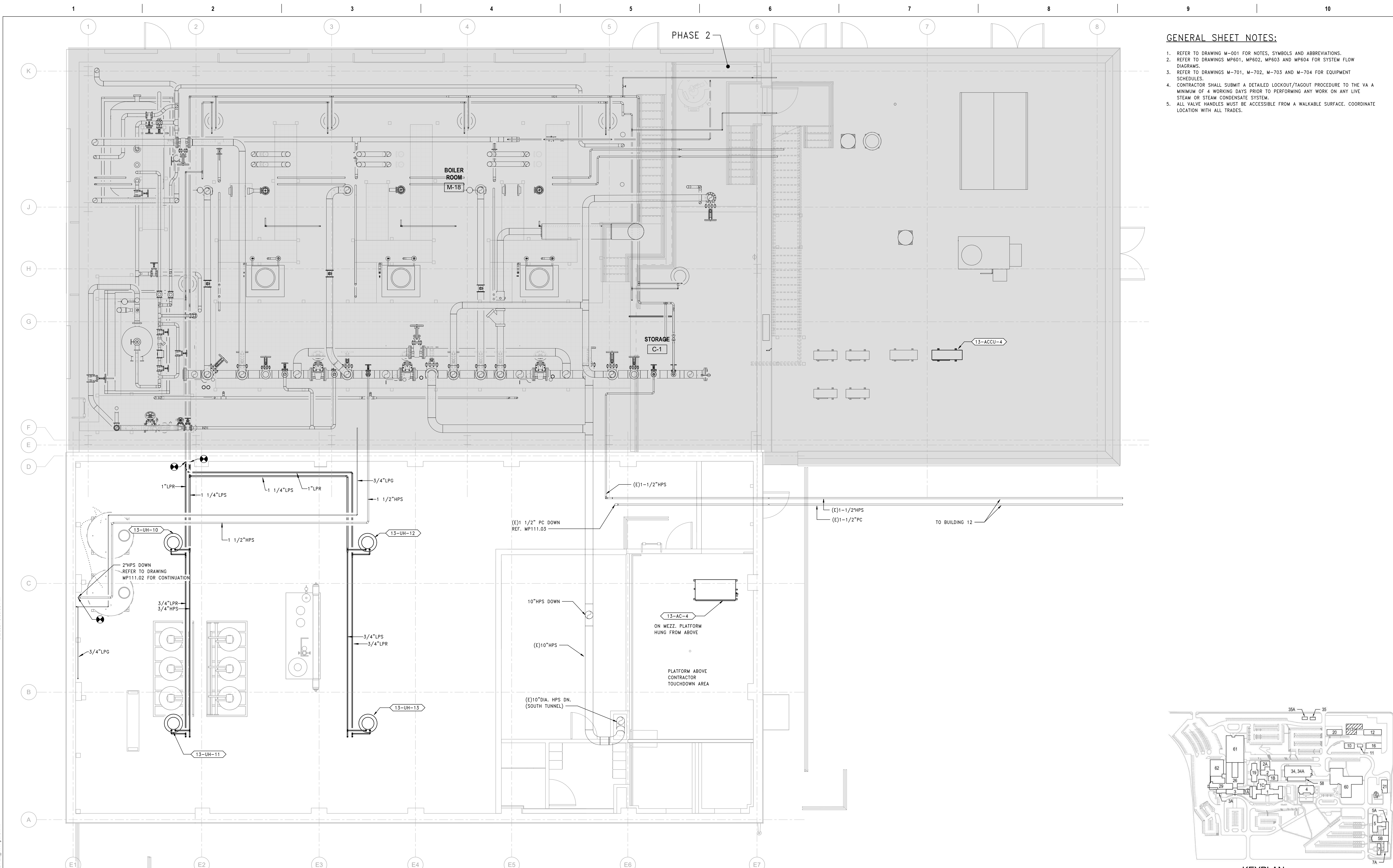
VA U.S. Department of Veterans Affairs

<p>Drawing Title MECHANICAL PIPING PLAN SHOP & MAIN LEVELS, PHASE 3</p> <p>Approved: Project Director</p>	<p>Phase 100% BID SET</p> <p>FULLY SPRINKLERED</p>
--	--

<p>Project Title INSTALL NEW BOILERS IN BUILDING 13</p> <p>Location ROBERT J. DOLE VA MEDICAL CENTER WICHITA, KANSAS</p> <p>Issue Date 2021-09-03</p> <p>Checked AP</p> <p>Drawn GDS</p>	<p>Project Number 589A7-18-302</p> <p>Building Number 13</p> <p>Drawing Number 13-MP111.03</p>
---	---

GENERAL SHEET NOTES:

1. REFER TO DRAWING M-001 FOR NOTES, SYMBOLS AND ABBREVIATIONS.
2. REFER TO DRAWINGS MP601, MP602, MP603 AND MP604 FOR SYSTEM FLOW DIAGRAMS.
3. REFER TO DRAWINGS M-701, M-702, M-703 AND M-704 FOR EQUIPMENT SCHEDULES.
4. CONTRACTOR SHALL SUBMIT A DETAILED LOCKOUT/TAGOUT PROCEDURE TO THE VA A MINIMUM OF 4 WORKING DAYS PRIOR TO PERFORMING ANY WORK ON ANY LIVE STEAM OR STEAM CONDENSATE SYSTEM.
5. ALL VALVE HANDLES MUST BE ACCESSIBLE FROM A WALKABLE SURFACE. COORDINATE LOCATION WITH ALL TRADES.



1 PIPING PLAN - EXISTING CATWALK & CATWALK LEVELS, PHASE 3
SCALE: 1/4" = 1'-0"

PRINTS OF THIS DRAWING SHALL NOT BE USED FOR ANY PURPOSE WHATSOEVER WITHOUT THE SEAL AND SIGNATURE OF THE PROFESSIONAL ENGINEER

NO.	DESCRIPTION	DATE

CONSULTANTS

<p>HAZARDOUS MATERIALS MABBETT & ASSOCIATES, INC. 105 CENTRAL STREET, STONEHAM, MA 02180 PHONE: (781)275-9595</p>	<p>FIRE SUPPRESSION KOFFEL ASSOCIATES 8815 CENTRE PARK DRIVE, SUITE 200, COLUMBIA, MD 21045 PHONE: (410)759-2246</p>
<p>CIVIL / STRUCTURAL PROFESSIONAL ENGINEERING CONSULTANTS, P.A. 303 SOUTH TOPEKA, WICHITA, KS 67202 PHONE: (316)262-2691</p>	<p>ELECTRONIC SECURITY MAGNA ENGINEERS 861 CORPORATE DRIVE, SUITE 210, LEXINGTON, KY 40503 PHONE: (859)309-2990</p>
<p>ARCHITECTURAL OCULUS INC. 1 SOUTH MEMORIAL DRIVE, SUITE 1500, SAINT LOUIS, MO 63102 PHONE: (314)367-6100</p>	<p>PHYSICAL SECURITY FORCE PROTECT 3210 GULF BLVD, UNIT 304, BELLEAIR BEACH, FL 33786 PHONE: (502)836-4232</p>

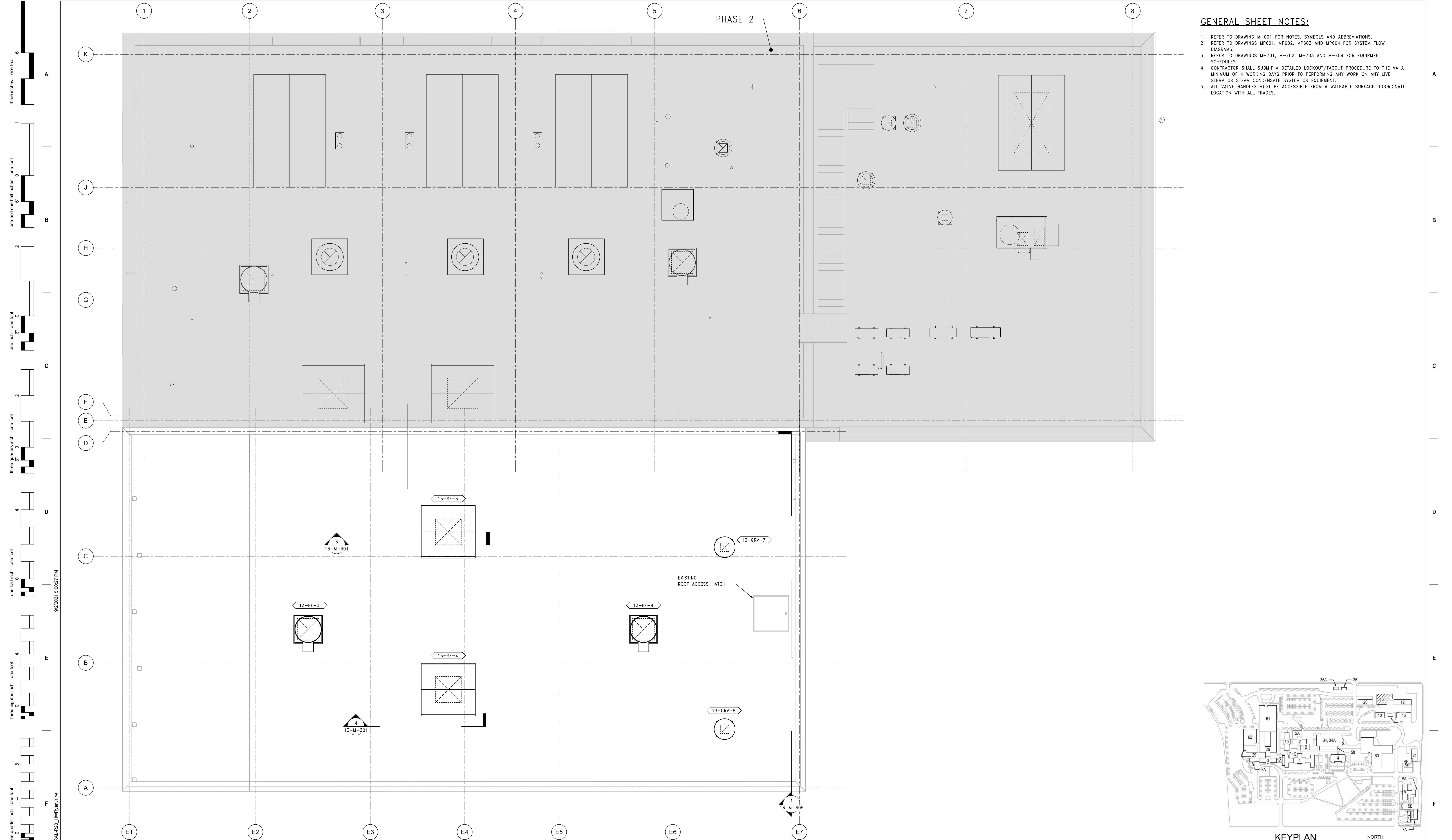
ENGINEER OF RECORD

<p>Miller-Remick LLC M.E.P. & Structural Engineering A Service Disabled Veteran Owned Small Business 1010 KINGS HIGHWAY SOUTH CHERRY HILL, NEW JERSEY 08034 PHONE: (856)429-4000 FAX: (856)429-5002 MR PROJECT NO: 0499-0121</p>	<p>MILLER-REMIK LLC PROFESSIONAL ENGINEER ANTHONY D. PACIARD LICENSED PROFESSIONAL ENGINEER KANSAS 26413 9.3.2021</p>
---	--

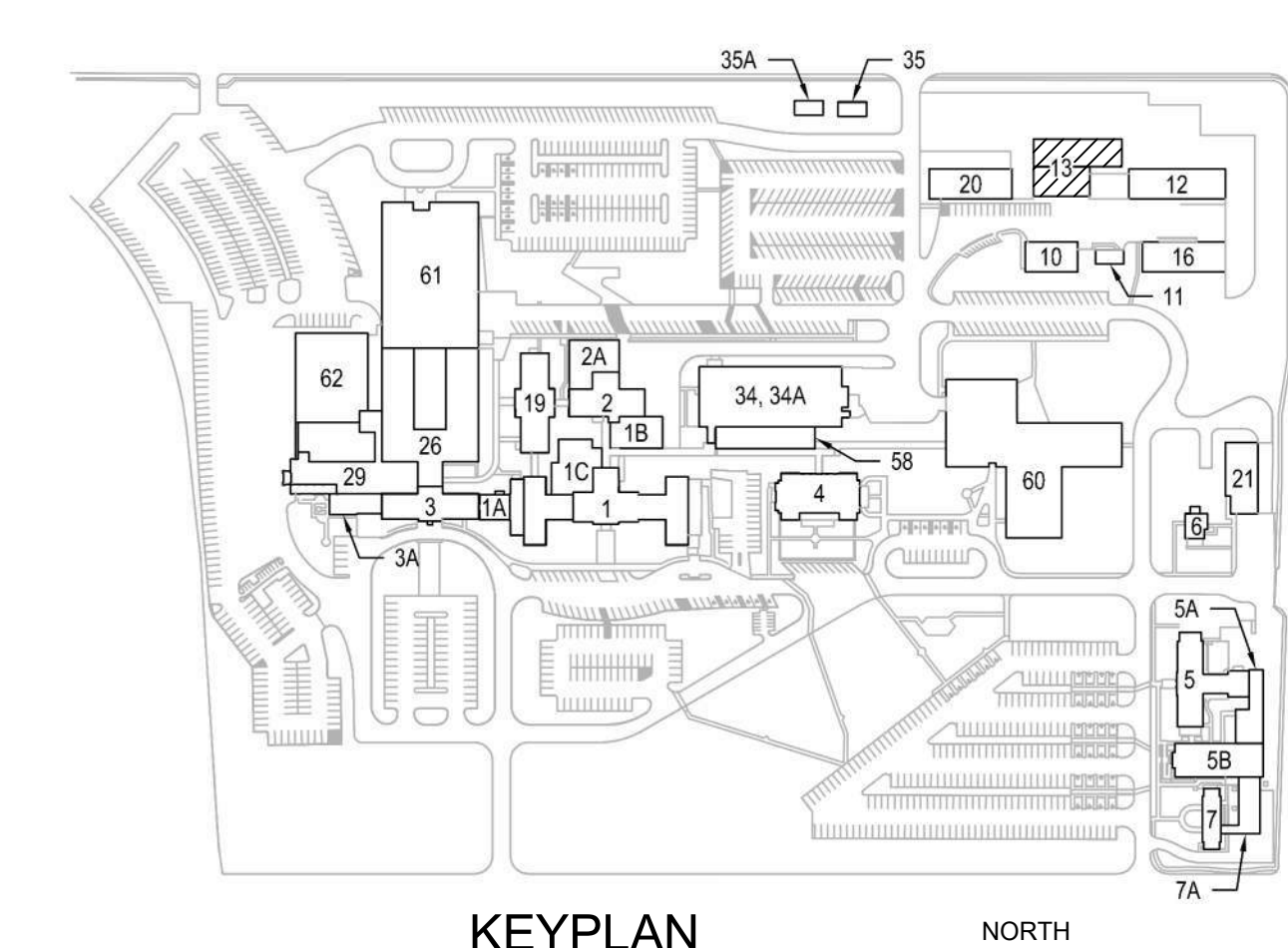
<p>Office of Construction and Facilities Management VA U.S. Department of Veterans Affairs</p>	<p>Drawing Title MECHANICAL PIPING PLAN EX CATWALK & CATWALK LVLS, PH 3 Approved: Project Director</p>
---	---

<p>Phase 100% BID SET</p>	<p>Project Title INSTALL NEW BOILERS IN BUILDING 13</p>	<p>Project Number 589A7-18-302</p>
<p>FULLY SPRINKLERED</p>	<p>Location ROBERT J. DOLE VA MEDICAL CENTER WICHITA, KANSAS</p>	<p>Building Number 13</p>
<p>Issue Date 2021-09-03</p>	<p>Checked AP</p>	<p>Drawn GDS</p>
<p>Drawing Number 13-MP121.03</p>		<p> </p>

<p>Project Title INSTALL NEW BOILERS IN BUILDING 13</p>	<p>Project Number 589A7-18-302</p>
<p>Location ROBERT J. DOLE VA MEDICAL CENTER WICHITA, KANSAS</p>	<p>Building Number 13</p>
<p>Issue Date 2021-09-03</p>	<p>Checked AP</p>
<p>Drawn GDS</p>	<p>Drawing Number 13-MP121.03</p>



- GENERAL SHEET NOTES:**
1. REFER TO DRAWING M-001 FOR NOTES, SYMBOLS AND ABBREVIATIONS.
 2. REFER TO DRAWINGS MP601, MP602, MP603 AND MP604 FOR SYSTEM FLOW DIAGRAMS.
 3. REFER TO DRAWINGS M-701, M-702, M-703 AND M-704 FOR EQUIPMENT SCHEDULES.
 4. CONTRACTOR SHALL SUBMIT A DETAILED LOCKOUT/TAGOUT PROCEDURE TO THE VA A MINIMUM OF 4 WORKING DAYS PRIOR TO PERFORMING ANY WORK ON ANY LIVE STEAM OR STEAM CONDENSATE SYSTEM OR EQUIPMENT.
 5. ALL VALVE HANDLES MUST BE ACCESSIBLE FROM A WALKABLE SURFACE. COORDINATE LOCATION WITH ALL TRADES.



1 MECHANICAL NEW WORK PLAN - ROOF, PHASE 3
SCALE: 1/4" = 1'-0"

PRINTS OF THIS DRAWING SHALL NOT BE USED FOR ANY PURPOSE WHATSOEVER WITHOUT THE SEAL AND SIGNATURE OF THE PROFESSIONAL ENGINEER

NO.	DESCRIPTION	DATE

CONSULTANTS

<p>HAZARDOUS MATERIALS MABBETT & ASSOCIATES, INC. 105 CENTRAL STREET, STONEHAM, MA 02180 PHONE: (781)275-8550</p>	<p>FIRE SUPPRESSION KOFFEL ASSOCIATES 8815 CENTRE PARK DRIVE, SUITE 200, COLUMBIA, MD 21045 PHONE: (410)753-2246</p>
<p>CIVIL / STRUCTURAL PROFESSIONAL ENGINEERING CONSULTANTS, P.A. 303 SOUTH TOPEKA, WICHITA, KS 67202 PHONE: (316)262-2691</p>	<p>ELECTRONIC SECURITY MAGNA ENGINEERS 861 CORPORATE DRIVE, SUITE 210, LEXINGTON, KY 40503 PHONE: (859)309-2990</p>
<p>ARCHITECTURAL OCULUS INC. 1 SOUTH MEMORIAL DRIVE, SUITE 1500, SAINT LOUIS, MO 63102 PHONE: (314)367-6100</p>	<p>PHYSICAL SECURITY FORCE PROTECT 3210 GULF BLVD, UNIT 304, BELLAIR BEACH, FL 33786 PHONE: (502)836-4232</p>

ENGINEER OF RECORD

<p>Miller-Remick LLC M.E.P. & Structural Engineering A Service Disabled Veteran Owned Small Business 1010 KINGS HIGHWAY SOUTH CHERRY HILL, NEW JERSEY 08034 PHONE: (856)429-4000 FAX: (856)429-9002 MR PROJECT NO: 0499-0121</p>	<p>MILLER-REMIK LLC PROFESSIONAL ENGINEER ANTHONY D. PACIARO LICENSED PROFESSIONAL ENGINEER KANSAS 26413 9.3.2021</p>
---	--

Office of Construction and Facilities Management

U.S. Department of Veterans Affairs

<p>Drawing Title MECHANICAL NEW WORK PLAN ROOF, PHASE 3</p> <p>Approved: Project Director</p>	<p>Phase 100% BID SET</p>
<p>FULLY SPRINKLERED</p>	<p>Project Title INSTALL NEW BOILERS IN BUILDING 13</p> <p>Location ROBERT J. DOLE VA MEDICAL CENTER WICHITA, KANSAS</p> <p>Issue Date 2021-09-03</p> <p>Checked AP</p> <p>Drawn GDS</p>

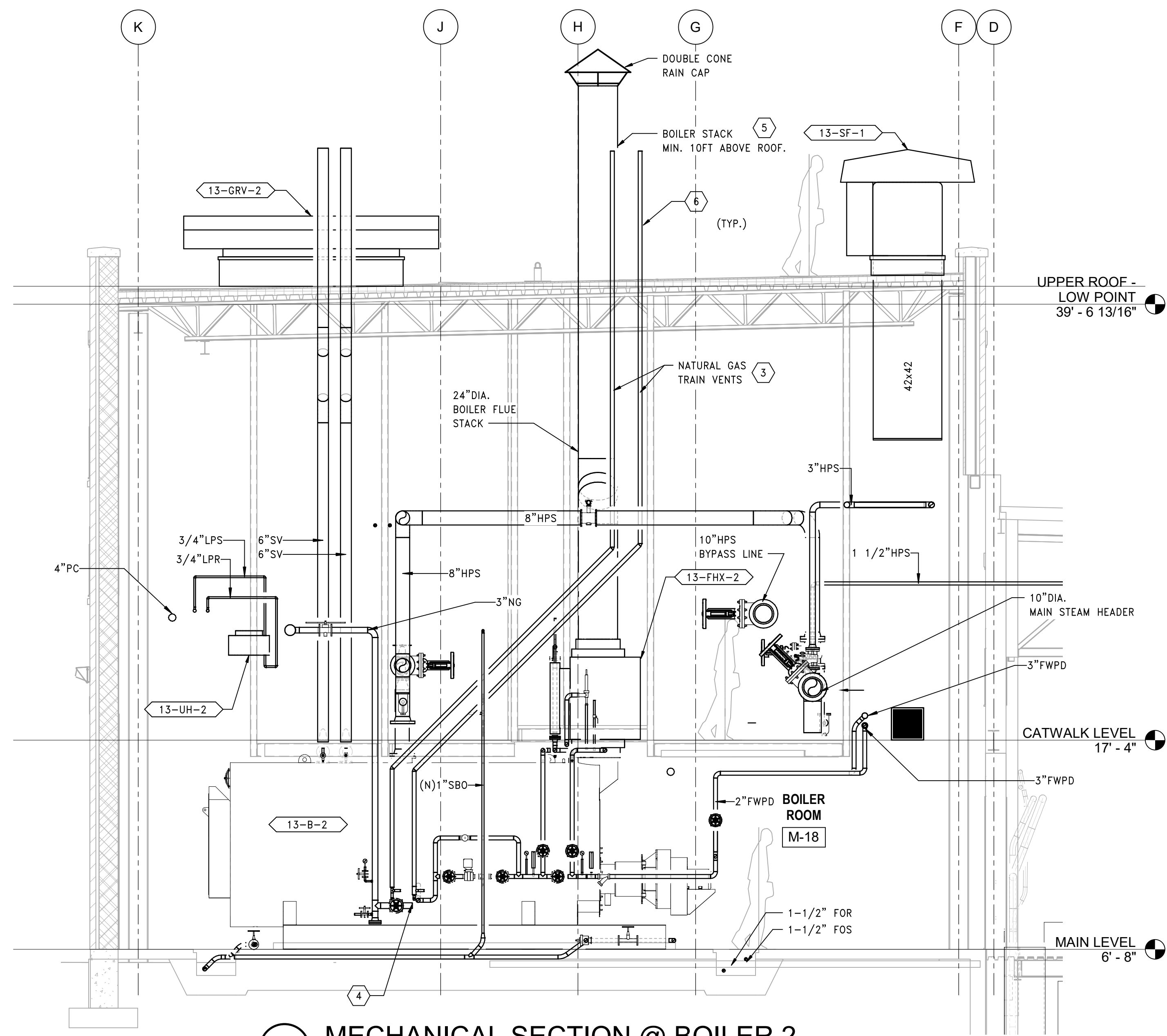
<p>Project Number 589A7-18-302</p> <p>Building Number 13</p> <p>Drawing Number 13-M-131.03</p>

GENERAL SHEET NOTES:

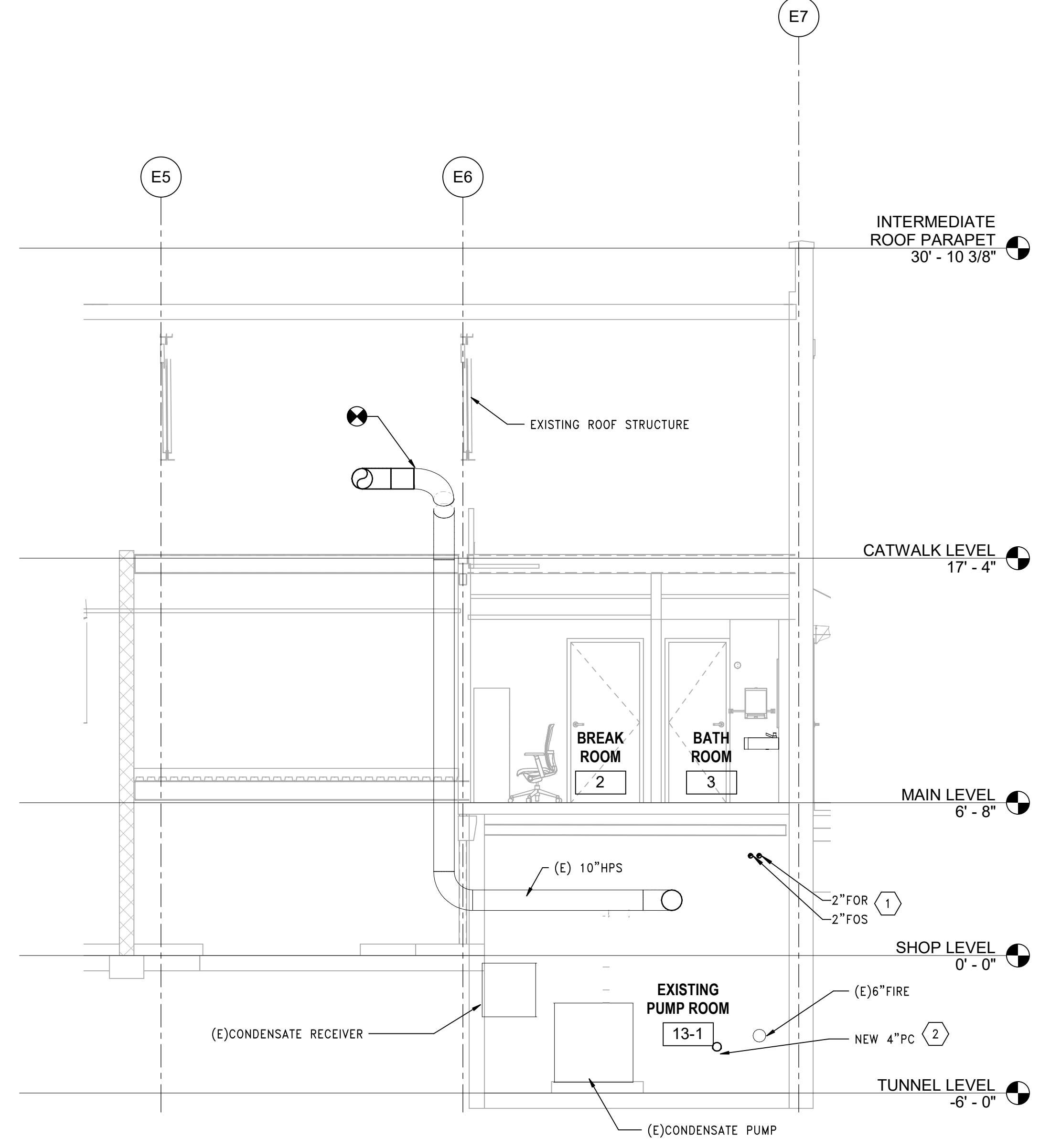
1. REFER TO DRAWING M-001 FOR NOTES, SYMBOLS AND ABBREVIATIONS.
2. REFER TO DRAWINGS MP601, MP602, MP603 AND MP604 FOR SYSTEM FLOW DIAGRAMS.
3. REFER TO DRAWINGS M-701, M-702, M-703 AND M-704 FOR EQUIPMENT SCHEDULES.
4. CONTRACTOR SHALL SUBMIT A DETAILED LOCKOUT/TAGOUT PROCEDURE TO THE VA A MINIMUM OF 4 WORKING DAYS PRIOR TO PERFORMING ANY WORK ON ANY LIVE STEAM OR STEAM CONDENSATE SYSTEM OR EQUIPMENT.
5. ALL VALVE HANDLES MUST BE ACCESSIBLE FROM A WALKABLE SURFACE. COORDINATE LOCATION WITH ALL TRADES.

SHEET KEYNOTES:

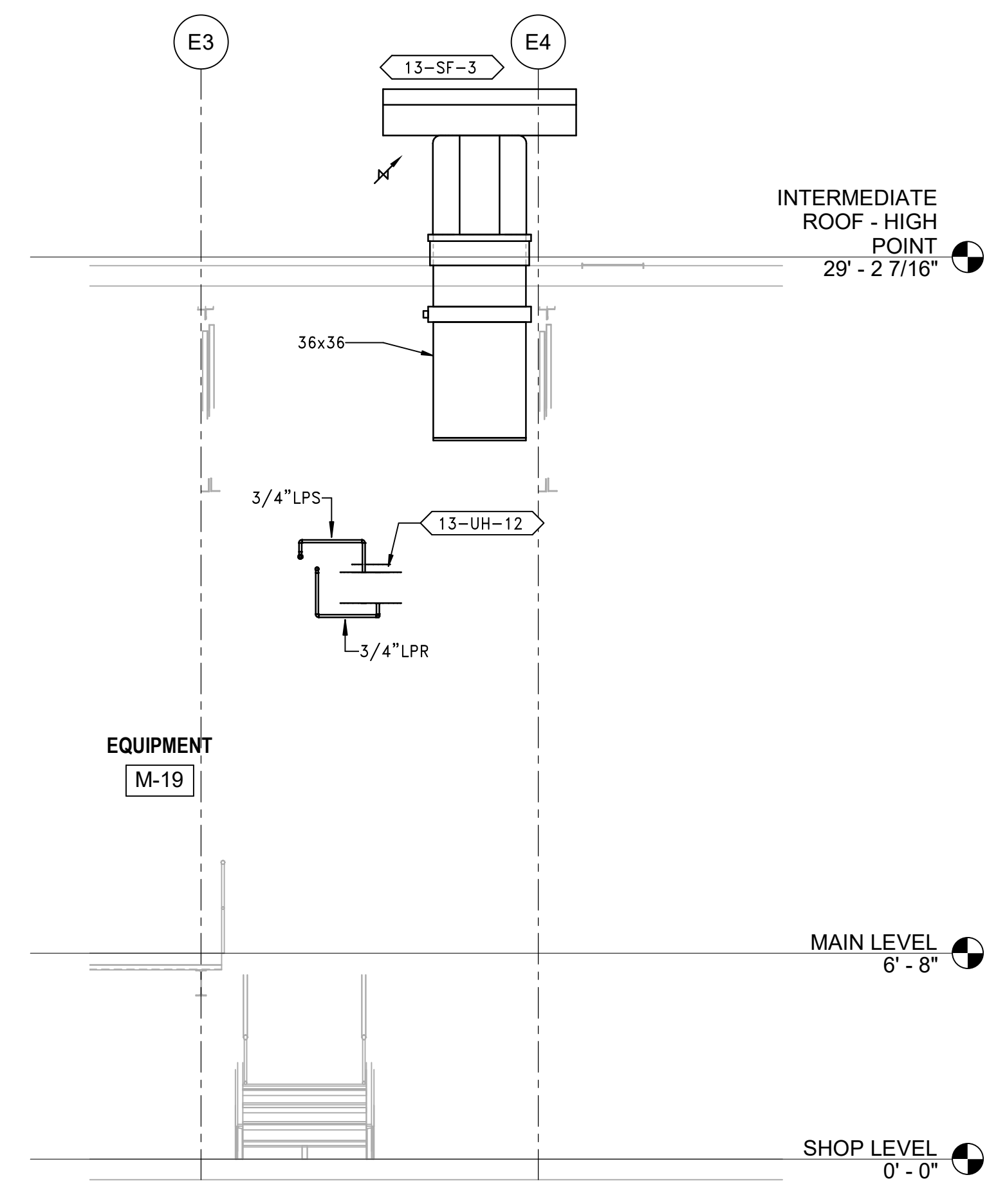
1. COORDINATE ROUTING OF NEW FUEL OIL PIPING IN LOWER LEVEL WITH EXISTING CONDITIONS AND ALL TRADES.
2. EXTEND EXISTING 4" CONDENSATE PIPE (PC) TO NEW PUMP ROOM. PIPING TO BE INSTALLED IN PHASE 2. KEEP PIPE AS CLOSE TO WALL AS POSSIBLE, COORDINATE ROUTING WITH EXISTING CONDITIONS.
3. GAS TRAIN VENTS UP THROUGH ROOF. VENTS MUST BE A MINIMUM OF 10 FEET FROM ANY INTAKES. SIZE VENTS PER SCHEDULE ON DETAIL #2 ON DRAWING M-504.
4. REFER TO DETAIL 2 ON DRAWING M-504 FOR ADDITIONAL GAS TRAIN DETAILS.
5. REFER TO DETAIL 2 ON DRAWING M-502 FOR ADDITIONAL INFORMATION.
6. INSTALL NEW PIPE ANCHOR ATTACHED TO FOUNDATION WALL. REFER TO DETAIL 15 ON STRUCTURAL DRAWING S-502.



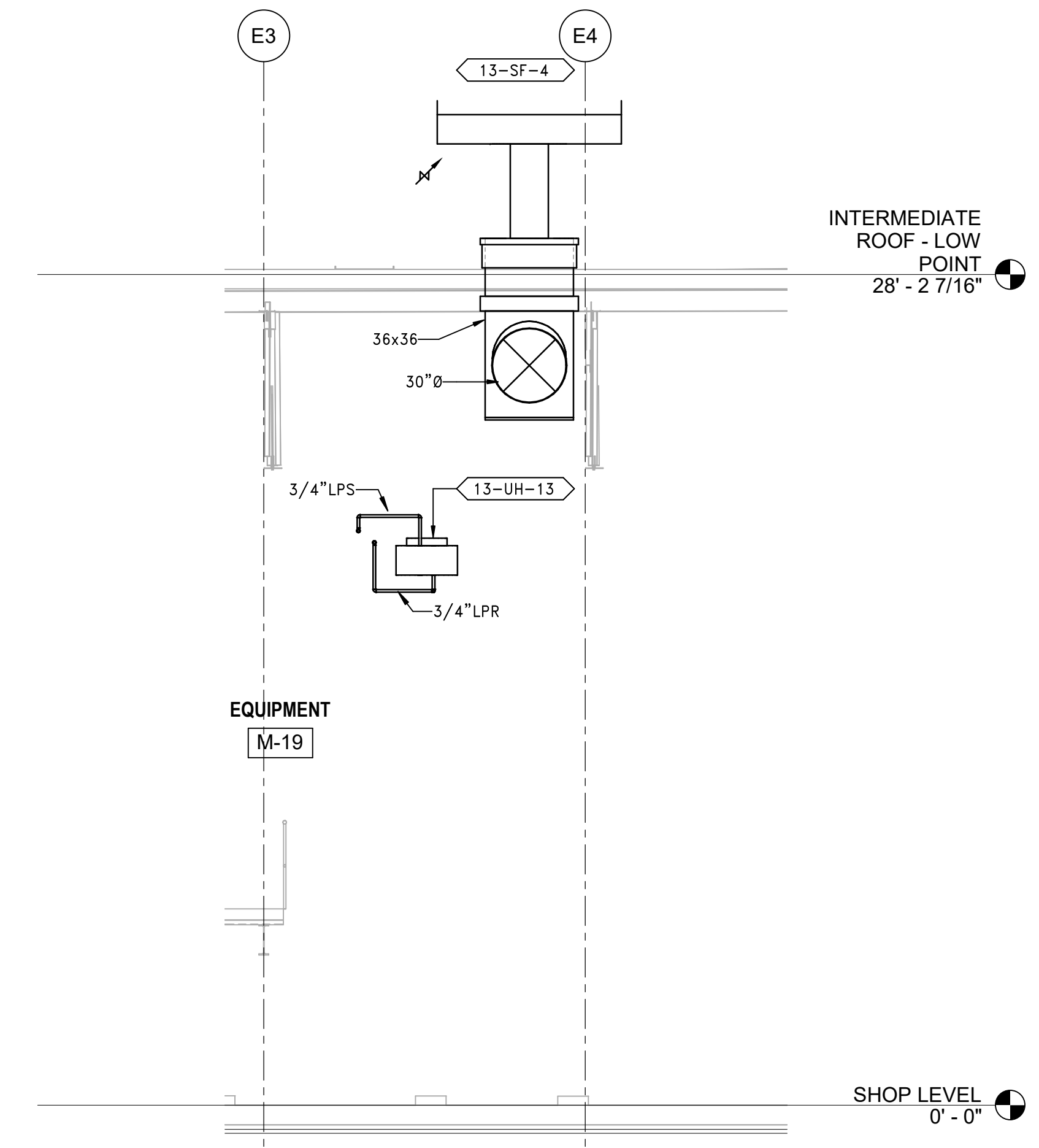
1 MECHANICAL SECTION @ BOILER 2
SCALE: 1/4" = 1'-0"



2 PHASE 2 - HPS CONNECTION TO SOUTH LOOP
SCALE: 1/4" = 1'-0"



3 SECTION SUPPLY FAN DUCT RISER
SCALE: 1/4" = 1'-0"



4 SECTION - SUPPLY FAN DUCT RISER
SCALE: 1/4" = 1'-0"

PRINTS OF THIS DRAWING SHALL NOT BE USED FOR ANY PURPOSE WHATSOEVER WITHOUT THE SEAL AND SIGNATURE OF THE PROFESSIONAL ENGINEER.			CONSULTANTS HAZARDOUS MATERIALS MABBETT & ASSOCIATES, INC. 105 CENTRAL STREET, STONEHAM, MA 02180 PHONE: (781)275-8050 CIVIL / STRUCTURAL PROFESSIONAL ENGINEERING CONSULTANTS, P.A. 303 SOUTH TOPEKA, WICHITA, KS 67202 PHONE: (316)262-2691 ARCHITECTURAL OCULUS INC. 1 SOUTH MEMORIAL DRIVE, SUITE 1500, SAINT LOUIS, MO 63102 PHONE: (314)367-8100		FIRE SUPPRESSION KOFFEL ASSOCIATES 8815 CENTRE PARK DRIVE, SUITE 200, COLUMBIA, MD 21045 PHONE: (410)759-2246 ELECTRONIC SECURITY MAGNA ENGINEERS 861 CORPORATE DRIVE, SUITE 210, LEXINGTON, KY 40503 PHONE: (859)309-2990 PHYSICAL SECURITY FORCE PROTECT 3210 GULF BLVD, UNIT 304, BELL GEAR BEACH, FL 33786 PHONE: (502)836-4232		ENGINEER OF RECORD Miller-Remick LLC M.E.P. & Structural Engineering A Service Disabled Veteran Owned Small Business 1010 KINGS HIGHWAY SOUTH CHERRY HILL, NEW JERSEY 08034 PHONE: (856)429-4000 FAX: (856)429-5022 MR PROJECT NO: 0499-0121		MILLER-REMIK LLC PROFESSIONAL ENGINEER ANTHONY D. PACIARD LICENSED PROFESSIONAL ENGINEER 26413 KANSAS 9.3.2021		Office of Construction and Facilities Management VA U.S. Department of Veterans Affairs		Drawing Title MECHANICAL SECTIONS Approved: Project Director		Phase 100% BID SET FULLY SPRINKLERED		Project Title INSTALL NEW BOILERS IN BUILDING 13 Location ROBERT J. DOLE VA MEDICAL CENTER WICHITA, KANSAS Issue Date 2021-09-03 Checked MH Drawn GDS		Project Number 589A7-18-302 Building Number 13 Drawing Number 13-M-301	
--	--	--	--	--	---	--	--	--	--	--	--	--	---	--	--	--	--	--	---	--

9/22/2021 5:00:36 PM
 C:\temp\REVIT_BAK0109-0121-Wichita Boilers-MEP-CENTRAL-R20_HWR\mru.rvt