

CONTRACTOR ABBREVIATION KEY

ABBR:	DESCRIPTION:
E.C.	ELECTRICAL CONTRACTOR
F.P.C.	FIRE PROTECTION CONTRACTOR
G.C.	GENERAL CONTRACTOR
H.C.	HEATING CONTRACTOR
M.C.	MECHANICAL CONTRACTOR
P.C.	PLUMBING CONTRACTOR
S.C.	SECURITY CONTRACTOR
T.C.	TECHNOLOGY CONTRACTOR
T.C.C.	TEMPERATURE CONTROLS CONTRACTOR
V.C.	VENTILATION CONTRACTOR

FIRE PROTECTION SYMBOL LIST

NOT ALL SYMBOLS MAY APPLY.

SYMBOL:	DESCRIPTION:
—DFP—	DRAIN
—FP—	FIRE PROTECTION
—	PIPE CAP
—	PIPE DOWN
—	PIPE UP OR UP/DOWN
—	UNION/FLANGE
—	DIRECTION OF FLOW IN PIPE
—	ROUTE TO DRAIN
—	SHUTOFF VALVE NORMALLY OPEN
—	AUTOMATIC DRAIN VALVE
—	ANGLE VALVE
—	BUTTERFLY VALVE WITH MONITOR SWITCH
—	CHECK VALVE
—	BACKFLOW PREVENTER
—	INSPECTOR TEST AND DRAIN VALVE
—	FLOW SWITCH
—	PRESSURE SWITCH
—	PRESSURE GAUGE (FURNISHED WITH BALL VALVE)
—	MONITOR SWITCH
—	AREA BOUNDARY
NO HATCH	LIGHT HAZARD
ORDINARY GROUP 1	
ORDINARY GROUP 2	
▶	SPRINKLER - WALL MOUNTED
●	SPRINKLER
○	SPRINKLER - CONCEALED

FIRE PROTECTION ABBREVIATION KEY

ABBR:	DESCRIPTION:
AD	ACCESS DOOR
AFF	ABOVE FINISHED FLOOR
BFP	BACKFLOW PREVENTER
I.E.	INVERT ELEVATION
N.C.	NORMALLY CLOSED
NIC	NOT IN CONTRACT
N.O.	NORMALLY OPEN
SCCR	SHORT CIRCUIT CURRENT RATING
TYP	TYPICAL
UNO	UNLESS NOTED OTHERWISE

FIRE SPRINKLER USAGE SCHEDULE

NOTES:
1. SEE FLOOR PLANS FOR ZONING REQUIREMENTS.
2. SPRINKLER SHALL HAVE COLOR CODED BULB THERMAL ELEMENT.
3. ALL SPRINKLERS SHALL BE UL AND FM LISTED.
4. CONTRACTOR TO VERIFY SPRINKLER REQUIREMENTS BASED ON ACTUAL INSTALLATION, USAGE, ARCHITECTURAL CEILING PLAN AND NFPA 13 REQUIREMENTS.
5. TAG NAME IS PRIMARILY FOR IDENTIFYING SPRINKLERS IN SUBMITTALS. IT MAY OR MAY NOT BE FOUND ELSEWHERE ON THE DRAWINGS. CONTRACTOR TO SUBMIT ALL SPRINKLER TYPES TO BE USED.
6. AREAS ARE GENERAL IN NATURE. CONTRACTOR TO MATCH UNSCHEDULED AREAS TO SIMILAR SPACES.

AREA TYPE (NOTE 1 & 5)	AREA HAZARD	TAG NAME (NOTE 4 & 5)	SPRINKLER			TEMPERATURE RATING	MANUFACTURER & MODEL	NOTES
			TYPE	RESPONSE CATEGORY	FINISH			
AREAS WITH FINISHED CEILINGS	SEE PLANS	SPR-1	RECESSED PENDENT	QUICK	CHROME PLATED	155 (PER NFPA)	VIKING VK, RELIABLE F1FR, TYCOO TY-FRS, VICTAULIC VZ208	NOTES 2, 3
AREAS WITHOUT CEILINGS	SEE PLANS	SPR-2	UPRIGHT	QUICK	ROUGH BRASS	155 (PER NFPA)	VIKING VK, RELIABLE F1FR, TYCOO TY-FRS, VICTAULIC Z704	NOTES 2, 3

MECHANICAL RENOVATION NOTES:

- THESE NOTES APPLY TO ALL MECHANICAL SHEETS AND TRADES, INCLUDING BUT NOT LIMITED TO, FIRE PROTECTION, PLUMBING, VENTILATION, PIPING AND TEMPERATURE CONTROL.
- EXISTING CONDITIONS ARE SHOWN BASED ON INFORMATION OBTAINED FROM FIELD SURVEYS, EXISTING BUILDING DOCUMENTS, AND STAFF. VERIFY EXISTING CONDITIONS AND REPORT ANY CONFLICTS BEFORE PROCEEDING.
 - NOT ALL EXISTING DUCTWORK AND PIPING IS SHOWN. VERIFY EXISTING CONDITIONS BEFORE STARTING WORK. NOTIFY ENGINEER OF ANY CONFLICTS WITH NEW WORK.
 - FIELD VERIFY THE AVAILABLE CLEARANCES FOR DUCTWORK AND PIPING BEFORE FABRICATION. RISERS AND DROPS MAY BE NECESSARY BECAUSE OF EXISTING FIELD CONDITIONS.
 - EACH CONTRACTOR SHALL FIELD VERIFY ACCESSIBILITY TO THE AREA OF HISHER WORK AND SHALL NOTIFY THE GENERAL CONTRACTOR PRIOR TO BIDDING IF OTHER UTILITIES ARE REQUIRED TO BE REMOVED OR RELOCATED TO ALLOW ACCESS TO HISHER AREA OF WORK.
 - EACH CONTRACTOR SHALL CUT AND PATCH ROOFS, WALLS, AND FLOORS ASSOCIATED WITH HIS WORK.
 - THE GENERAL CONTRACTOR IS RESPONSIBLE FOR REMOVAL AND REPLACEMENT OF CEILING, CEILING TILES, AND CEILING GRIDS ASSOCIATED WITH AREAS OF WORK BY ALL CONTRACTORS. NOTIFY THE GENERAL CONTRACTOR OF AFFECTED AREAS PRIOR TO BIDDING.
 - WHERE EXISTING MECHANICAL SYSTEMS ARE LOCATED IN AREAS THAT CONFLICT WITH NEW EQUIPMENT, PIPING, OR DUCTWORK TO BE INSTALLED, EACH CONTRACTOR SHALL EITHER ARRANGE NEW EQUIPMENT, PIPING, OR DUCTWORK IN SUCH A FASHION THAT IT DOES NOT CONFLICT WITH EXISTING SYSTEMS, OR REWORK EXISTING MECHANICAL SYSTEMS TO ALLOW FOR INSTALLATION OF NEW EQUIPMENT, PIPING, OR DUCTWORK.
 - PROVIDE TEMPORARY CONNECTIONS TO MAINTAIN SYSTEMS WITH MINIMUM OUTAGE DURING CONSTRUCTION. MAINTAIN ACCESS TO EXISTING MECHANICAL INSTALLATIONS THAT REMAIN ACTIVE.
 - OBTAIN PERMISSION FROM OWNER BEFORE SHUTTING DOWN ANY SYSTEM FOR ANY REASON. MAINTAIN SERVICE TO ALL COMPONENTS THAT ARE TO REMAIN UNTIL NEW SYSTEMS ARE INSTALLED.
 - MAINTAIN EXISTING SYSTEM IN SERVICE UNTIL NEW SYSTEM IS COMPLETE AND READY FOR TIE IN AND SWITCHOVER. DRAIN SYSTEM ONLY TO MAKE SWITCHOVERS AND CONNECTIONS. OBTAIN PERMISSION FROM OWNER BEFORE PARTIALLY OR COMPLETELY DRAINING SYSTEM. MAKE SWITCHOVER TO NEW SYSTEMS WITH MINIMUM OUTAGE.
 - DISCONNECT AND REMOVE MECHANICAL DEVICES AND EQUIPMENT SERVING EQUIPMENT THAT HAS BEEN REMOVED.

MECHANICAL GENERAL NOTES:

- THESE NOTES APPLY TO ALL MECHANICAL SHEETS AND TRADES, INCLUDING BUT NOT LIMITED TO, FIRE PROTECTION, PLUMBING, VENTILATION, PIPING AND TEMPERATURE CONTROL.
- DRAWINGS SHOWING LOCATIONS OF EQUIPMENT, DUCTWORK, PIPING, ETC. ARE DIAGRAMMATIC AND MAY NOT ALWAYS REFLECT EXACT INSTALLATION CONDITIONS. DRAWINGS SHOW THE GENERAL ARRANGEMENT OF DUCTWORK, PIPING, EQUIPMENT, ETC., AND MAY NOT INCLUDE ALL OFFSETS AND FITTINGS REQUIRED FOR COMPLETE INSTALLATION. THE DRAWINGS SHALL BE FOLLOWED AS CLOSELY AS ACTUAL BUILDING CONSTRUCTION AND THE WORK OF OTHERS WILL PERMIT.
 - DO NOT SCALE DRAWINGS. VERIFY ALL DIMENSIONS AND CLEARANCES FROM ARCHITECTURAL, STRUCTURAL, SUBMITTALS, AND OTHER APPROPRIATE DRAWINGS OR PHYSICALLY AT SITE. REVIEW ALL DRAWINGS, INCLUDING THOSE OF OTHER TRADES.
 - COORDINATE ALL WORK WITH ALL OTHER TRADES PRIOR TO INSTALLATION TO PROVIDE CLEARANCES REQUIRED FOR OPERATION, MAINTENANCE, CODE COMPLIANCE, AND TO VERIFY NON-INTERFERENCE WITH OTHER WORK. DO NOT FABRICATE PRIOR TO VERIFICATION OF NECESSARY CLEARANCES FOR ALL TRADES. BRING ANY INTERFERENCES OR CONFLICTS TO THE ATTENTION OF THE ARCHITECT/ENGINEER BEFORE PROCEEDING WITH FABRICATION OR EQUIPMENT ORDERS. ALL VALVES MUST BE LOCATED WITH REASONABLE ACCESS FOR SERVICE, MAINTENANCE, AND FUNCTION.
 - REVIEW SPACE REQUIREMENTS OF EQUIPMENT SPECIFIED OR SUBSTITUTED AND MAKE REASONABLE ACCOMMODATIONS IN LAYOUT AND POSITIONING TO PROVIDE PROPER ACCESS.
 - ANY CHANGES REQUIRED TO ELIMINATE CONFLICTS OR THAT RESULT FROM A FAILURE TO COORDINATE SHALL BE MADE BY THE CONTRACTOR WITHOUT ADDITIONAL COST OR EXPENSE TO OTHERS.
 - EACH CONTRACTOR IS RESPONSIBLE FOR ALL COSTS ASSOCIATED WITH ELECTRICAL CHANGES REQUIRED FOR EQUIPMENT PROPOSED THAT DIFFERS FROM THE BASIS OF DESIGN.
 - REFER TO ARCHITECTURAL REFLECTED CEILING PLAN, ELECTRICAL, TECHNOLOGY AUDIOVISUAL, AND OTHER MECHANICAL PLANS FOR EXACT LOCATIONS OF ALL CEILING MOUNTED DEVICES, OTHER THAN SPRINKLERS.
 - EACH CONTRACTOR IS RESPONSIBLE FOR DAMAGE CAUSED BY THEIR ACTIONS TO WALLS, FLOORS, CEILINGS, AND ROOFS. THE CONTRACTOR WHOSE WORK CAUSES DAMAGE IS RESPONSIBLE FOR PATCHING TO MATCH ORIGINAL CONSTRUCTION, FIRE RATING, AND FINISH.
 - IN AREAS WITH DRYWALL CEILINGS COORDINATE LOCATIONS OF ACCESS PANELS WITH THE GC FOR ACCESS TO VALVES, DUCTWORK ACCESSORIES, DAMPERS, ETC. COORDINATE PANEL TYPE AND COLOR WITH ARCHITECT. NOTIFY THE GC OF THE REQUIRED ACCESS PANELS PRIOR TO BIDDING.
 - SEAL ALL FLOOR, WALL, AND ROOF PENETRATIONS AIRTIGHT WHERE CONDUITS, PIPING, AND DUCTS PENETRATE. PENETRATIONS THROUGH EXTERIOR WALLS AND ROOF SHALL BE SEALED AIRTIGHT WITH WATERPROOFING MATERIALS RECOMMENDED BY MANUFACTURER FOR OUTDOOR USE.
 - CAULK ALL PIPE AND DUCT PENETRATIONS OF FULL HEIGHT NON-FIRE RATED WALL, PARTITION, FLOOR, AND ROOF ASSEMBLIES. THIS IS ESSENTIAL TO PREVENT NOISE TRANSMISSION FROM ONE ROOM TO ANOTHER AND TO PROVIDE THE DESIRED NC LEVELS WITHIN ROOMS.
 - WHERE PIPES AND DUCTS ARE SHOWN TO PENETRATE FLOORS, PROVIDE SLEEVED OPENINGS WITH THE TOP EDGE RAISED ABOVE FLOOR SURFACE IN ACCORDANCE WITH ALL RELEVANT SPEC SECTIONS. SEAL SLEEVE PERIMETER TO BE WATERTIGHT.
 - EQUIPMENT SIZES AND SERVICE CLEARANCE REQUIREMENTS VARY AMONG DIFFERENT MANUFACTURERS. CONSULT APPROVED SHOP DRAWINGS FOR EQUIPMENT SIZES AND REQUIRED SERVICE CLEARANCES. COORDINATE WITH LAYOUT OF EQUIPMENT PADS, PIPING, DUCTWORK, ETC.
 - DO NOT BLOCK TUBE PULL OR EQUIPMENT SERVICE CLEARANCES.
 - MAINTAIN MINIMUM 3'-6" CLEARANCE IN FRONT OF ALL ELECTRICAL PANELS, MOTOR STARTERS, SWITCHES, AND DISCONNECTS.
 - PROVIDE CONCRETE EQUIPMENT PAD FOR ALL FLOOR MOUNTED EQUIPMENT. PAD SHALL EXTEND MINIMUM 6" BEYOND ALL SIDES OF EQUIPMENT.
 - DO NOT SUPPORT EQUIPMENT, PIPING, OR DUCTWORK FROM METAL DECKING OR OTHER NON-STRUCTURAL BUILDING ELEMENTS. ANCHORS EMBEDDED IN CONCRETE SHALL BE CRACKED CONCRETE APPROVED IN ACCORDANCE WITH SPECIFICATIONS.

FIRE PROTECTION GENERAL NOTES:

- THE SYMBOLS AND THE MATERIAL LIST ARE FOR THE CONVENIENCE OF THE CONTRACTOR. CONTRACTOR SHALL VERIFY QUANTITIES AND FURNISH ALL MATERIALS REQUIRED FOR FULLY OPERATIONAL SYSTEMS, WHETHER SPECIFIED OR NOT. CATALOG NUMBERS SHALL NOT BE CONSIDERED COMPLETE, BUT ARE GIVEN AS AN AID TO THE CONTRACTOR AND TO INDICATE THE QUALITY REQUIRED. CONTRACTOR IS RESPONSIBLE FOR COMPLETE DESCRIPTION OF MATERIAL ON THESE DRAWINGS AND IN THE SPECIFICATIONS BEFORE ORDERING. THE DESCRIPTION OF THE MATERIAL TAKES PRECEDENCE OVER THE CATALOG NUMBER. THE FIRST MANUFACTURER IS THE BASIS OF DESIGN.
- CENTER SPRINKLERS IN CEILING TILES IN BOTH DIRECTIONS IN ALL AREAS. IN AREAS WITH 2"x4" CEILING TILES CENTERING USING A 2"x2" CEILING PATTERN IS ACCEPTABLE. SPRINKLER HEADS SHALL BE ALIGNED WITH OTHER SPRINKLER HEADS, LIGHTING, DIFFUSERS, AND ANY OTHER FEATURES IN THE CEILING.
 - NEW SPRINKLERS SHALL BE QUICK RESPONSE TYPE UNLESS OTHERWISE NOTED. CONTRACTOR SHALL NOT MIX STANDARD RESPONSE SPRINKLERS WITH QUICK RESPONSE SPRINKLERS IN UNPARTITIONED SPACES.
 - PROVIDE COVERAGE ABOVE AND BELOW ALL DUCTWORK GREATER THAN 48" WIDE.
 - FIRE PROTECTION PIPE ROUTING IS SHOWN FOR GENERAL LAYOUT. DETERMINE EXACT NUMBER OF SPRINKLERS, PIPE SIZING, AND PIPE ROUTING.
 - THE FIRE PROTECTION SYSTEM SHALL BE DESIGNED TO MEET OWNER'S INSURANCE COMPANY STANDARDS WHERE APPLICABLE. THE MORE STRINGENT OF THE OWNER'S INSURANCE UNDERWRITER'S DESIGN CRITERIA AND THE NFPA STANDARDS SHALL BE USED.
 - ALL BUILDING AREA SHALL BE FULLY SPRINKLERED INCLUDING CANOPIES, WALKWAYS, OVERHANGS, SOFFITS, AND BUILDING PROJECTIONS. ALL ACCESSIBLE COMBUSTIBLE CONCEALED SPACES SHALL BE FULLY PROTECTED BY THE SPRINKLER SYSTEM.
 - EACH ASSEMBLY SHALL INCLUDE CHECK VALVE BUTTERFLY CONTROL VALVE INDICATING "OPEN" OR "CLOSED" POSITION, TEST INSPECTION VALVE, FLOW SWITCH AND PRESSURE GAUGES.
 - PROVIDE RISER ROOM IDENTIFICATION SIGNAGE OUTSIDE THE FIRE RISER ROOM. COORDINATE EXACT SIGN LANGUAGE WITH AHJ.
 - WHERE FEASIBLE INSTALL PIPES HIGH AS POSSIBLE TO AVOID CONFLICT WITH OTHER DISCIPLINES, AND TO REDUCE THE AMOUNT OF REQUIRED ROD STIFFENER SUPPORTS.
 - INSTALL SYSTEM DRAINS AT LOW POCKET AREAS CONTAINING FIVE GALLONS OF WATER OR MORE. PROVIDE WITH ISOLATION VALVE AND THREADED HOSE CONNECTION.
 - FOLLOW STRUCTURAL DETAILS WHEN PENETRATING OR PASSING THROUGH STRUCTURAL ELEMENTS. ALTERNATE DESIGNS WILL NEED TO BE APPROVED THROUGH THE STRUCTURAL ENGINEER.
 - PROVIDE INTERMEDIATE TEMPERATURE SPRINKLER HEADS WHERE REQUIRED BY NFPA 13 OR FM UNLESS OTHERWISE NOTED.
 - FINAL HEAD LOCATION, TYPE AND FINISH SHALL BE REVIEWED AND APPROVED BY THE ARCHITECT.
 - EXACT LOCATION OF THE ALL PANELS SHALL BE VERIFIED ON SITE AND COORDINATED WITH THE ELECTRICAL CONTRACTOR.
 - PAINT ALL EXPOSED PIPING TO MATCH BACKGROUND OR AS DIRECTED BY THE ARCHITECT.
 - THE OWNER MUST BE NOTIFIED PRIOR TO EACH AND EVERY DRAINING OR RECHARGING OF THE SPRINKLER SYSTEM.
 - THE CONTRACTOR SHALL PREPARE A COORDINATED SET OF SHOP DRAWINGS AND SHALL OBTAIN APPROVAL FROM THE AUTHORITIES HAVING JURISDICTION AND THE LOCAL FIRE DEPARTMENT PRIOR TO ANY INSTALLATION.
 - WHERE PIPE PASSES THROUGH HOLES IN PLATFORMS, FOUNDATIONS, WALL, OR FLOORS, THE HOLES SHALL BE SIZED SUCH THAT DIAMETER OF THE HOLE IS NOMINALLY 2 INCHES LARGER THAN THE PIPE FOR 1" NOMINAL TO 3 1/2" NOMINAL AND 4" LARGER THAN THE PIPE FOR PIPE 4" AND LARGER.
 - DRAWING SHOW LOCATIONS OF EQUIPMENT, DUCTWORK, PIPING, ETC. ARE DIAGRAMMATIC AND MAY NOT ALWAYS REFLECT EXACT INSTALLATION CONDITIONS. DRAWINGS SHOW THE GENERAL ARRANGEMENT OF DUCTWORK, PIPING, EQUIPMENT, ETC. AND MAY NOT INCLUDE ALL OFFSETS AND FITTINGS REQUIRED FOR COMPLETE INSTALLATION. THE DRAWINGS SHALL BE FOLLOWED AS CLOSELY AS ACTUAL BUILDING CONSTRUCTION AND THE WORK OF OTHERS WILL PERMIT.
 - VERIFY ALL DIMENSIONS AND CLEARANCES FROM ARCHITECTURAL, STRUCTURAL SUBMITTALS, AND OTHER APPROPRIATE DRAWINGS OR PHYSICALLY AT SITE. REVIEW ALL DRAWINGS, INCLUDING THOSE OF OTHER TRADES.
 - A FLOW TEST SHALL BE PERFORMED ON THE FIRE PROTECTION MAIN SERVING THE BUILDING TO ENSURE ADEQUATE FLOW AND PRESSURE TO THE FIRE PROTECTION SYSTEM. CURRENT DESIGN ASSUMES ADEQUATE FLOW AND PRESSURE FOR REVISED FLOOR PLANS.

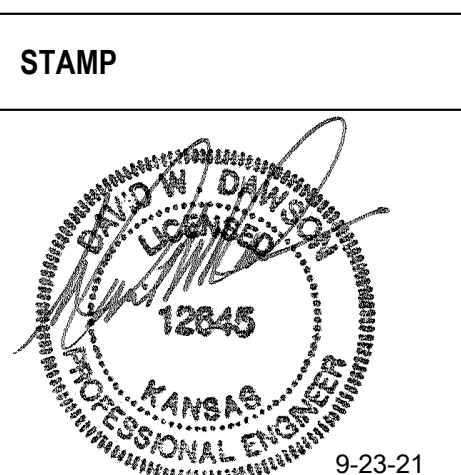
Revisions:	Date:

CONSULTANT

Engineering:
IMEG Corp.
15 Sunnen Drive, Suite 104
St. Louis, MO 63143
(314) 645-1132

ARCHITECT/ENGINEER OF RECORD

A/E:
Calvin L. Hinz Architects P.C.
3705 N. 200th Street
Elkhorn, NE 68022
(402) 291-6941



Office of Construction and Facilities Management

VA U.S. Department of Veterans Affairs

Drawing Title
FIRE PROTECTION COVERSHEET

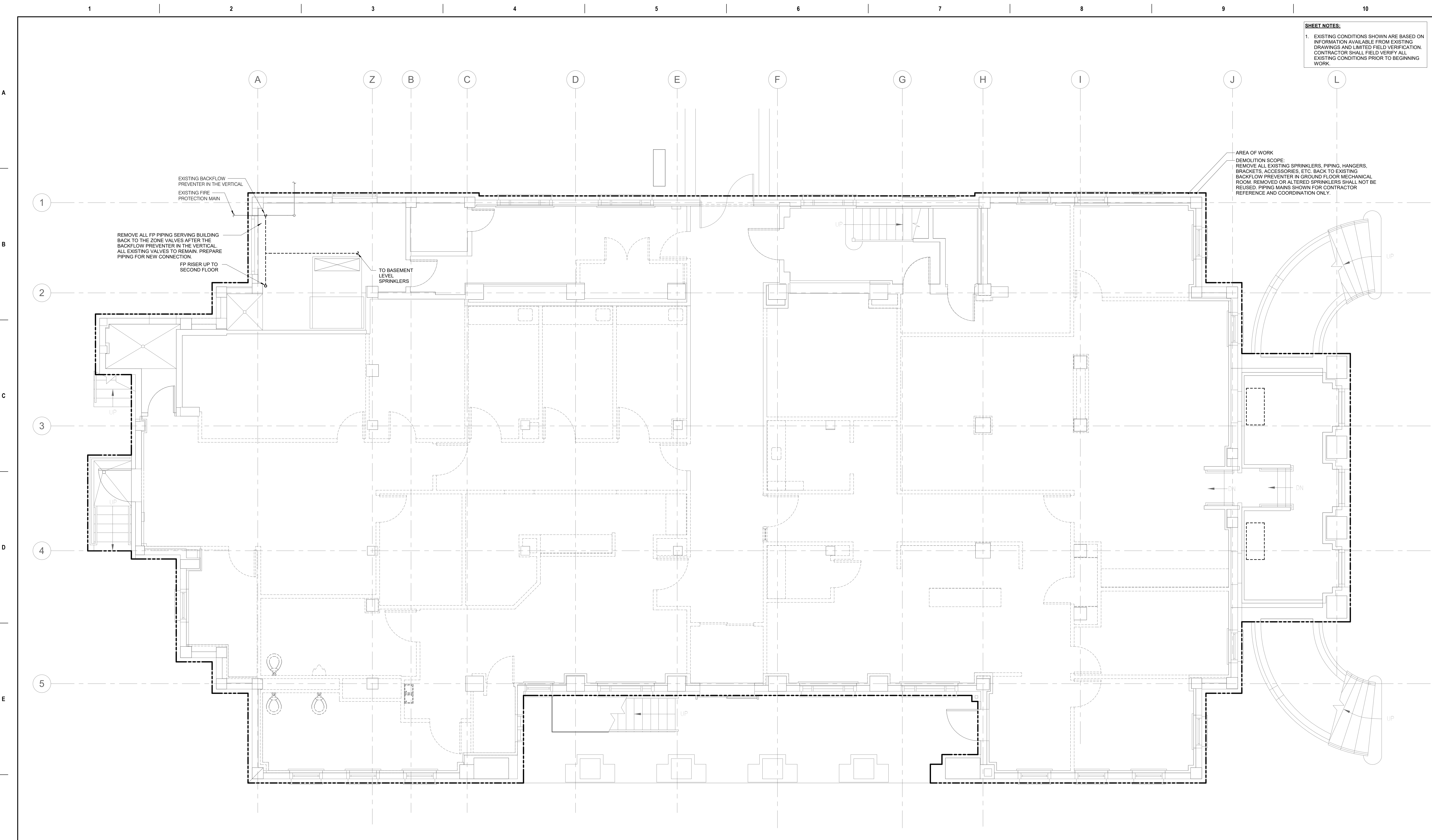
Approved:

Phase
BID DOCUMENTS

FULLY SPRINKLERED

Project Title Renovate and Repair Structural, Building 4	Project Number 589A7-21-108
Location Wichita, KS	Drawing Number FP-001
Issue Date 9/23/2021	Checked MATKAH
	Drawn KATDEN

SHEET NOTES:
 1. EXISTING CONDITIONS SHOWN ARE BASED ON INFORMATION AVAILABLE FROM EXISTING DRAWINGS AND LIMITED FIELD VERIFICATION. CONTRACTOR SHALL FIELD VERIFY ALL EXISTING CONDITIONS PRIOR TO BEGINNING WORK.

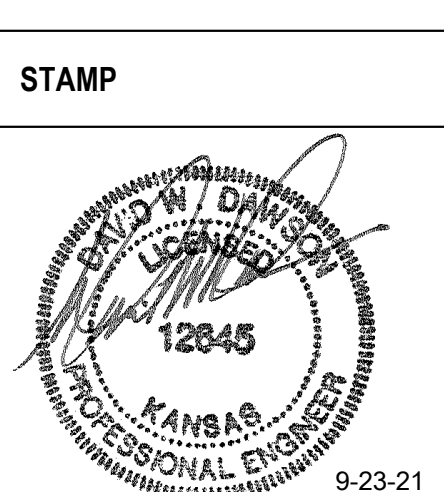


1 BASEMENT PLAN - FIRE PROTECTION DEMOLITION
 1/4" = 1'-0"

Revisions:	Date:

CONSULTANT
 Engineering:
 IMEG Corp.
 15 Sunnen Drive, Suite 104
 St. Louis, MO 63143
 (314) 645-1132

ARCHITECT/ENGINEER OF RECORD
 A/E:
 Calvin L. Hinz Architects P.C.
 3705 N. 200th Street
 Elkhorn, NE 68022
 (402) 291-6941



Office of Construction and Facilities Management
 VA U.S. Department of Veterans Affairs

Drawing Title
BASEMENT PLAN - FIRE PROTECTION DEMOLITION
 Approved:

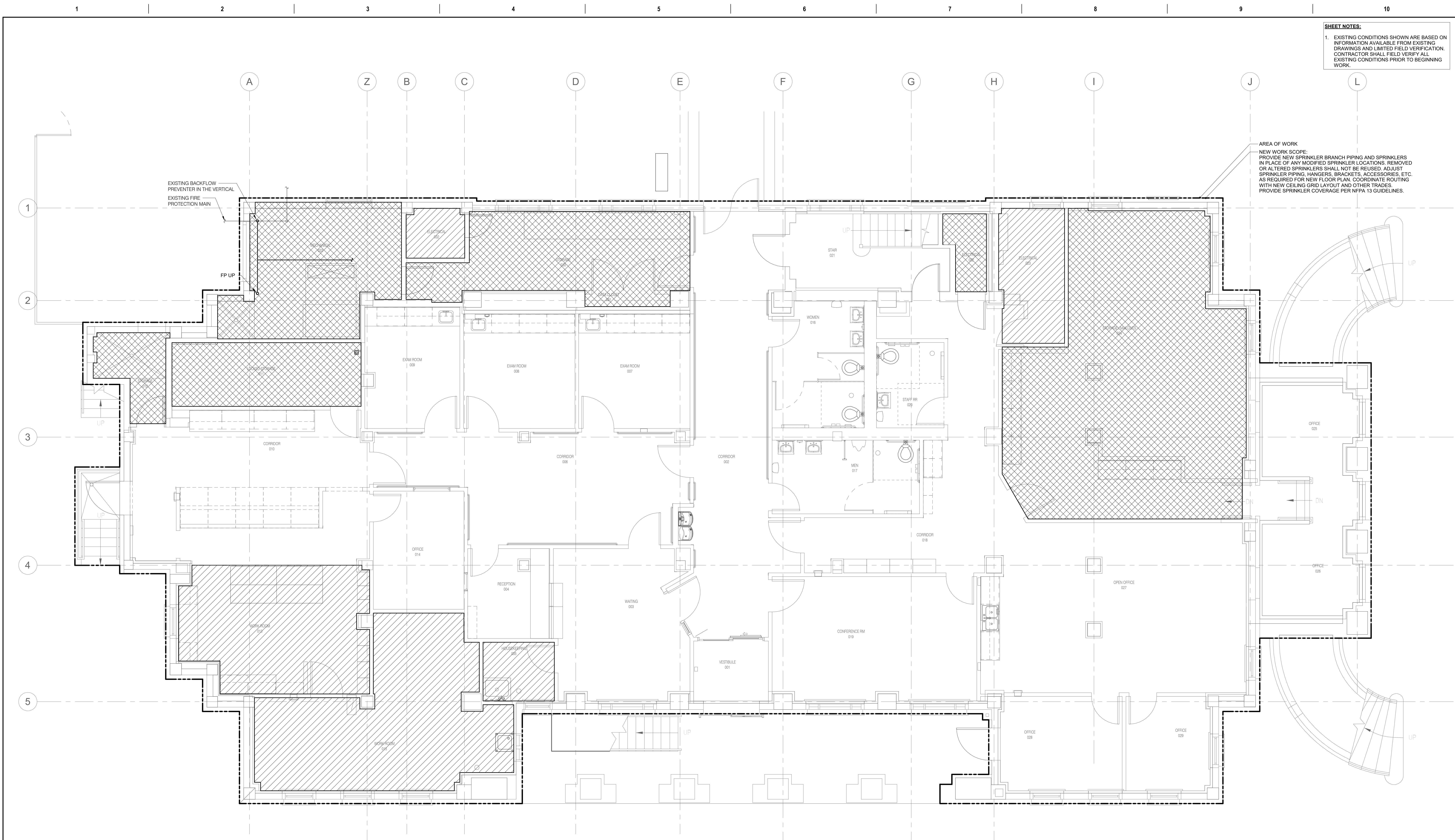
Phase
BID DOCUMENTS
FULLY SPRINKLERED

Project Title
 Renovate and Repair Structural, Building 4
 Location
 Wichita, KS
 Issue Date
 9/23/2021
 Checked
 MATKAH
 Drawn
 KATDEN

Project Number
 589A7-21-108
 Building Number
 4
 Drawing Number
 FD101

SHEET NOTES:
 1. EXISTING CONDITIONS SHOWN ARE BASED ON INFORMATION AVAILABLE FROM EXISTING DRAWINGS AND LIMITED FIELD VERIFICATION. CONTRACTOR SHALL FIELD VERIFY ALL EXISTING CONDITIONS PRIOR TO BEGINNING WORK.

AREA OF WORK
 NEW WORK SCOPE:
 PROVIDE NEW SPRINKLER BRANCH PIPING AND SPRINKLERS IN PLACE OF ANY MODIFIED SPRINKLER LOCATIONS, REMOVED OR ALTERED SPRINKLERS SHALL NOT BE REUSED. ADJUST SPRINKLER PIPING, HANGERS, BRACKETS, ACCESSORIES, ETC. AS REQUIRED FOR NEW FLOOR PLAN. COORDINATE ROUTING WITH NEW CEILING GRID LAYOUT AND OTHER TRADES. PROVIDE SPRINKLER COVERAGE PER NFPA 13 GUIDELINES.

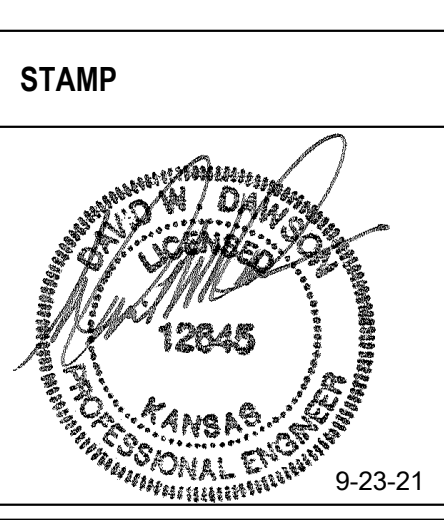


1 BASEMENT PLAN - FIRE PROTECTION
 1/4" = 1'-0"

Revisions:	Date:

CONSULTANT
Engineering:
 IMEG Corp.
 15 Sunnen Drive, Suite 104
 St. Louis, MO 63143
 (314) 645-1132

ARCHITECT/ENGINEER OF RECORD
A/E:
 Calvin L. Hinz Architects P.C.
 3705 N. 200th Street
 Elkhorn, NE 68022
 (402) 291-6941



Office of Construction and Facilities Management
 U.S. Department of Veterans Affairs

Drawing Title
 BASEMENT PLAN - FIRE PROTECTION
Approved:

Phase
 BID DOCUMENTS
 FULLY SPRINKLERED

Project Title
 Renovate and Repair Structural, Building 4
Location
 Wichita, KS
Issue Date
 9/23/2021
Checked
 MATKAH
Drawn
 KATDEN

Project Number
 589A7-21-108
Building Number
 4
Drawing Number
 FP-101

SHEET NOTES:
 1. EXISTING CONDITIONS SHOWN ARE BASED ON INFORMATION AVAILABLE FROM EXISTING DRAWINGS AND LIMITED FIELD VERIFICATION. CONTRACTOR SHALL VERIFY ALL EXISTING CONDITIONS PRIOR TO BEGINNING WORK.

NEW WORK SCOPE:
 PROVIDE NEW SPRINKLER BRANCH PIPING AND SPRINKLERS IN PLACE OF ANY MODIFIED SPRINKLER LOCATIONS. REMOVED OR ALTERED SPRINKLERS SHALL NOT BE REUSED. ADJUST SPRINKLER PIPING, HANGERS, BRACKETS, ACCESSORIES, ETC. AS REQUIRED FOR NEW FLOOR PLAN. COORDINATE ROUTING WITH NEW CEILING GRID LAYOUT AND OTHER TRADES. PROVIDE SPRINKLER COVERAGE PER NFPA 13 GUIDELINES.

AREA OF WORK

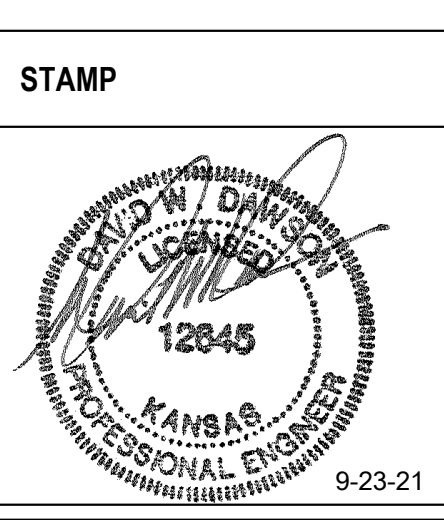
COORDINATE SPRINKLER LOCATIONS IN TELECOM ROOM 217 WITH DATA AND SYSTEMS EQUIPMENT BEING PROVIDED AS A PART OF SEPARATE PROJECT #689A7-21-100. SPRINKLERS SHALL NOT BE OVER CABLE TRAY OR EQUIPMENT.

1 SECOND FLOOR PLAN - FIRE PROTECTION
 1/4" = 1'-0"

Revisions:	Date:

CONSULTANT
Engineering:
 IMEG Corp.
 15 Sunnen Drive, Suite 104
 St. Louis, MO 63143
 (314) 645-1132

ARCHITECT/ENGINEER OF RECORD
A/E:
 Calvin L. Hinz Architects P.C.
 3705 N. 200th Street
 Elkhorn, NE 68022
 (402) 291-6941



Office of Construction and Facilities Management
 U.S. Department of Veterans Affairs

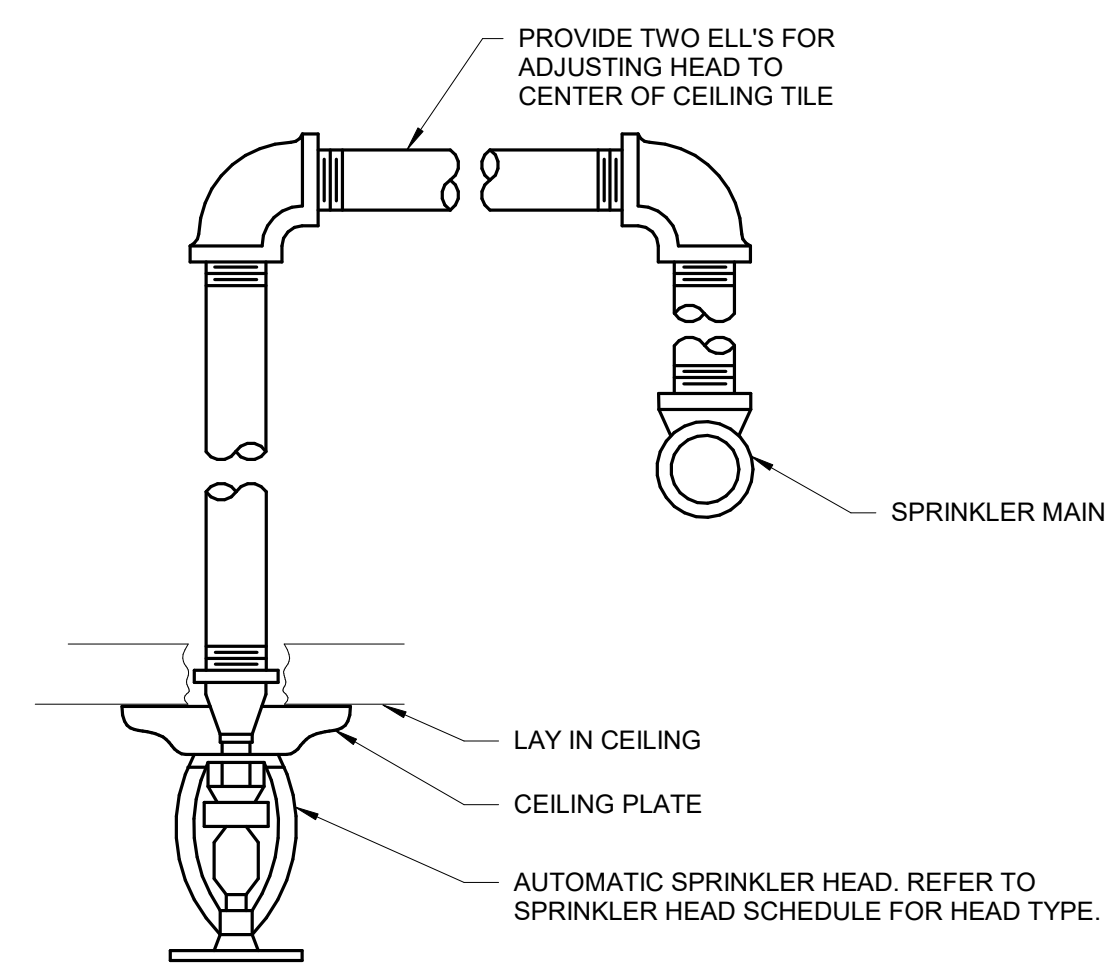
Drawing Title
 SECOND FLOOR PLAN - FIRE PROTECTION
Approved:

Phase
 BID DOCUMENTS
 FULLY SPRINKLERED

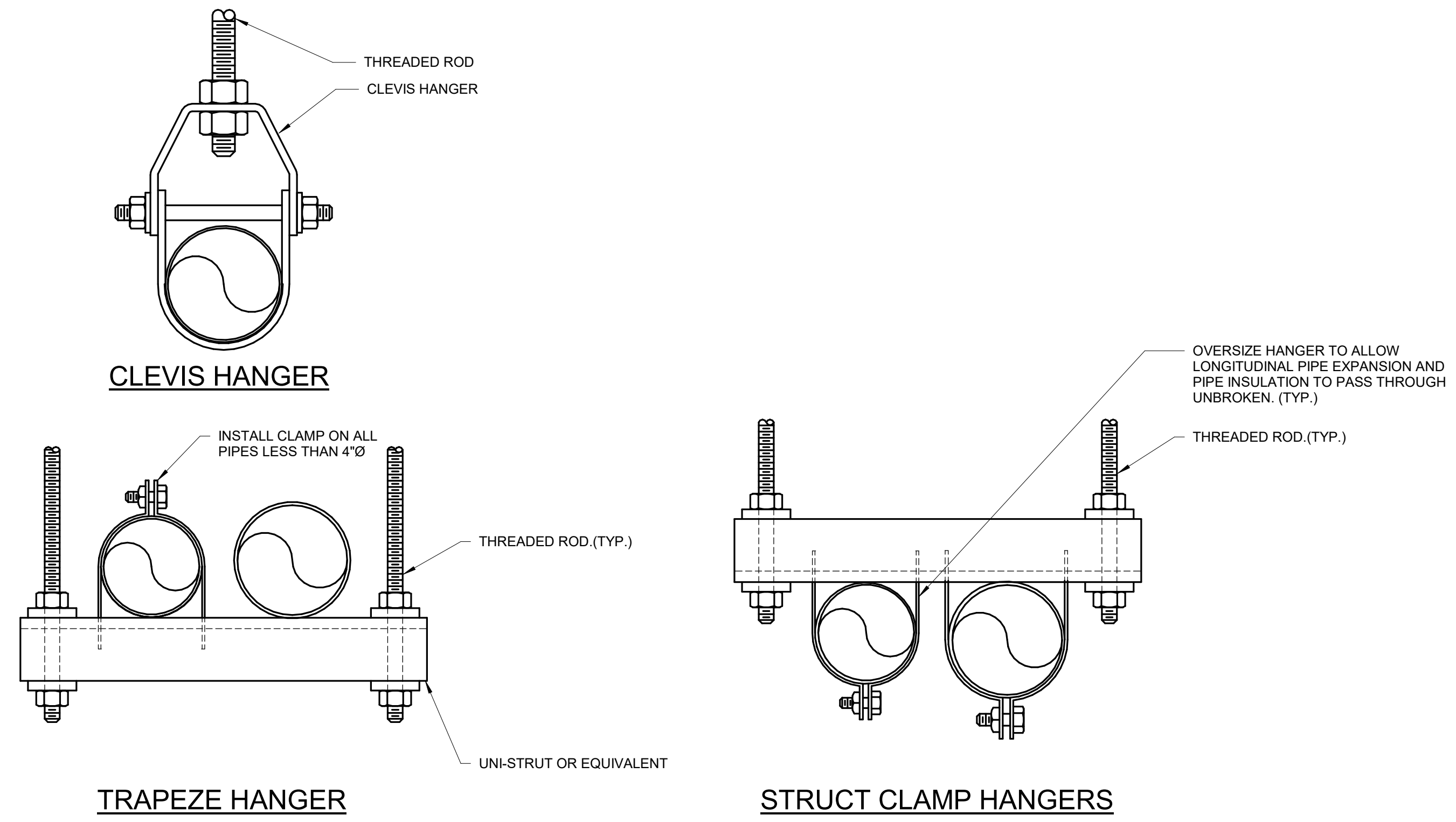
Project Title
 Renovate and Repair Structural, Building 4
Location
 Wichita, KS
Issue Date
 9/23/2021
Checked
 MATKAH
Drawn
 KATDEN

Project Number
 589A7-21-108
Building Number
 4
Drawing Number
 FP-103

A
B
C
D
E
F



1 SPRINKLER HEAD MOUNTING DETAIL
NO SCALE



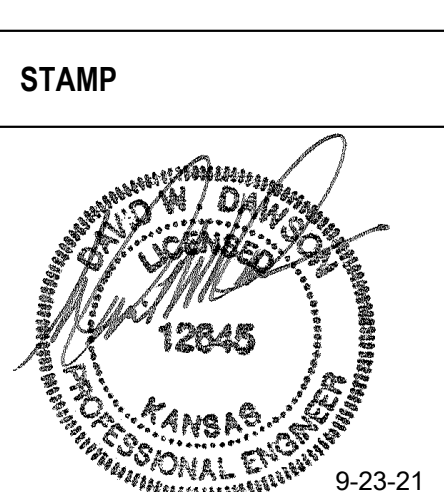
2 PIPE SUPPORT DETAIL
NO SCALE

NOTES:
1. REFER TO SPECIFICATION SECTION 21 05 29.

Revisions:	Date:

CONSULTANT
Engineering:
IMEG Corp.
15 Sunnen Drive, Suite 104
St. Louis, MO 63143
(314) 645-1132

ARCHITECT/ENGINEER OF RECORD
A/E:
Calvin L. Hinz Architects P.C.
3705 N. 200th Street
Elkhorn, NE 68022
(402) 291-6941



Office of
Construction
and Facilities
Management
VA U.S. Department
of Veterans
Affairs

Drawing Title
FIRE PROTECTION DETAILS
Approved:

Phase
BID DOCUMENTS
FULLY SPRINKLERED

Project Title
Renovate and Repair Structural,
Building 4
Location
Wichita, KS
Issue Date
9/23/2021
Checked
MATKAH
Drawn
KATDEN

Project Number
589A7-21-108
Building Number
4
Drawing Number
FP-301