

VIEW KEY	
	NAME LEVEL NAME 10' - 0" HEIGHT ABOVE PROJECT 0' - 0"
	INDICATES NOTE USED TO DESCRIBE ADDITIONAL INFORMATION ABOUT WORK REQUIRED, SPECIFIC TO THE SHEET AND/OR DETAIL
	INDICATES DIRECTION OF TRUE NORTH PLAN OR DETAIL NUMBER PLAN OR DETAIL NAME 1/8" = 1'-0" PLAN OR DETAIL SCALE
	INDICATES SIMILAR DETAIL REFERENCED IN MULTIPLE LOCATIONS DETAIL REFERRED TO BY SECTION CUT SHEET DETAIL IS LOCATED ON T101
LINE TYPE AND TAG KEY:	
	NEW WORK BY THIS CONTRACTOR (WIDE LINE)
	EXISTING TO BE REMOVED (SHORT DASHED PATTERN)
	NEW UNDERFLOOR OR UNDERGROUND (LONG DASHED PATTERN)
	EXISTING TO REMAIN OR WORK BY OTHERS (NARROW LINE)
	EXISTING TO BE REMOVED BY OTHERS (SHORT DASHED PATTERN)
	EXISTING UNDERFLOOR OR UNDERGROUND (LONG DASHED PATTERN)
HALFTONING DOES NOT MODIFY SCOPE:	
	TAG-E TAGS WITH DASH 'E' INDICATES THE REFERENCED OBJECT IS EXISTING
	TAG-1 UNDERLINED TEXT INDICATES ADDITIONAL INFORMATION CAN BE FOUND ELSEWHERE IN A SCHEDULE, MATERIAL LIST, OR SYMBOL LIST
	INDICATES AN EXISTING SYSTEM'S POINT OF CONNECTION/REMOVAL

CONTRACTOR ABBREVIATION KEY	
ABBR:	DESCRIPTION:
E.C.	ELECTRICAL CONTRACTOR
F.P.C.	FIRE PROTECTION CONTRACTOR
G.C.	GENERAL CONTRACTOR
H.C.	HEATING CONTRACTOR
M.C.	MECHANICAL CONTRACTOR
P.C.	PLUMBING CONTRACTOR
S.C.	SECURITY CONTRACTOR
T.C.	TECHNOLOGY CONTRACTOR
T.C.C.	TEMPERATURE CONTROLS CONTRACTOR
V.C.	VENTILATION CONTRACTOR

PLUMBING SYMBOL LIST	
NOT ALL SYMBOLS MAY APPLY.	
SYMBOL:	DESCRIPTION:
	COMPRESSED AIR
	COLD WATER - POTABLE
	DRAIN
	HOT WATER - POTABLE
	HOT WATER CIRC
	SANITARY DRAINAGE
	STORM DRAINAGE (ROOF SQUARE FOOTAGE)
	STORM DRAINAGE (SECONDARY)
	VENT
	SERVICE WATER - POTABLE
	PIPE CONTINUATION
	PIPE CAP
	PIPE DOWN
	PIPE UP OR UP/DOWN
	PIPE SERVING FIXTURE ON FLOOR ABOVE (EXAMPLE: FD = FLOOR DRAIN)
	PITCH PIPE IN DIRECTION
	DIRECTION OF FLOW IN PIPE
	ROUTE TO DRAIN
	ROOF DRAIN PROPERTIES SYMBOL SIZE (ROOF SQ. FT.)
	DIELECTRIC CONNECTION
	UNION/FLANGE
	SHUTOFF VALVE NORMALLY OPEN
	SHUTOFF VALVE NORMALLY CLOSED
	BALANCING VALVE (NUMBER INDICATES GPM)
	CHECK VALVE
	BACKFLOW PREVENTER
	SOLENOID VALVE
	SAFETY/RELIEF VALVE
	VACUUM BREAKER
	PRESSURE GAUGE (FURNISHED WITH BALL VALVE)
	PRESSURE SENSOR (FURNISHED WITH BALL VALVE)
	TEMPERATURE SENSOR WITH WELL
	THERMOMETER WITH WELL (DIAL TYPE)
	THERMOMETER WITH WELL (FILLED TYPE)
	REDUCER - REFERENCE SPECIFICATION FOR CONCENTRIC/ECCENTRIC AND FOT/FOB
	PRESSURE REDUCING VALVE (LIQUID/GAS)
	PUMP
	METER
	ALIGNMENT GUIDE
	PIPE ANCHOR
	EXPANSION JOINT

PLUMBING ABBREVIATION KEY	
ABBR:	DESCRIPTION:
AD	ACCESS DOOR
AFF	ABOVE FINISHED FLOOR
BFP	BACKFLOW PREVENTER
CO	CLEANOUT
E	EXISTING
EE	EMERGENCY EYEWASH
EWC	ELECTRIC WATER COOLER
FCO	FLOOR CLEANOUT
FD	FLOOR DRAIN
FM	FLOW METER
FS	FLOOR SINK
IE	INVERT ELEVATION (FOR REFERENCE ONLY)
LAV	LAVATORY
MB	MOP BASIN
MV	MIXING VALVE
NIC	NOT IN CONTRACT
RD	ROOF DRAIN
SCCR	SHORT CIRCUIT CURRENT RATING
SK	SINK
SS	SERVICE SINK
TD	TRENCH DRAIN
TP	TRAP PRIMER
TYP	TYPICAL
UR	URINAL
VTR	VENT THROUGH ROOF
WC	WATER CLOSET
WCO	WALL CLEANOUT
WH	WATER HEATER
WB	WATER BOX
UNO	UNLESS NOTED OTHERWISE
YCO	YARD CLEANOUT

- ### MECHANICAL RENOVATION NOTES:
- THESE NOTES APPLY TO ALL MECHANICAL SHEETS AND TRADES, INCLUDING BUT NOT LIMITED TO, FIRE PROTECTION, PLUMBING, VENTILATION, PIPING AND TEMPERATURE CONTROL.
- EXISTING CONDITIONS ARE SHOWN BASED ON INFORMATION OBTAINED FROM FIELD SURVEYS, EXISTING BUILDING DOCUMENTS, AND STAFF. VERIFY EXISTING CONDITIONS AND REPORT ANY CONFLICTS BEFORE PROCEEDING.
 - NOT ALL EXISTING DUCTWORK AND PIPING IS SHOWN. VERIFY EXISTING CONDITIONS BEFORE STARTING WORK. NOTIFY ENGINEER OF ANY CONFLICTS WITH NEW WORK FABRICATION, RISERS AND DROPS MAY BE NECESSARY BECAUSE OF EXISTING FIELD CONDITIONS.
 - EACH CONTRACTOR SHALL FIELD VERIFY ACCESSIBILITY TO THE AREA OF HIS/HER WORK AND SHALL NOTIFY THE GENERAL CONTRACTOR PRIOR TO BIDDING IF OTHER UTILITIES ARE REQUIRED TO BE REMOVED OR RELOCATED TO ALLOW ACCESS TO HIS/HER AREA OF WORK.
 - EACH CONTRACTOR SHALL CUT AND PATCH ROOFS, WALLS, AND FLOORS ASSOCIATED WITH HIS WORK.
 - THE GENERAL CONTRACTOR IS RESPONSIBLE FOR REMOVAL AND REPLACEMENT OF CEILING, CEILING TILES, AND CEILING GRIDS ASSOCIATED WITH AREAS OF WORK BY ALL CONTRACTORS. NOTIFY THE GENERAL CONTRACTOR OF AFFECTED AREAS PRIOR TO BIDDING.
 - WHERE EXISTING MECHANICAL SYSTEMS ARE LOCATED IN AREAS THAT CONFLICT WITH NEW EQUIPMENT, PIPING, OR DUCTWORK TO BE INSTALLED, EACH CONTRACTOR SHALL EITHER ARRANGE NEW EQUIPMENT, PIPING, OR DUCTWORK IN SUCH A FASHION THAT IT DOES NOT CONFLICT WITH EXISTING SYSTEMS, OR REWORK EXISTING MECHANICAL SYSTEMS TO ALLOW FOR INSTALLATION OF NEW EQUIPMENT, PIPING, OR DUCTWORK CONSTRUCTION. MAINTAIN ACCESS TO EXISTING MECHANICAL INSTALLATIONS THAT REMAIN ACTIVE.
 - OBTAIN PERMISSION FROM OWNER BEFORE SHUTTING DOWN ANY SYSTEM FOR ANY REASON. MAINTAIN SERVICE TO ALL COMPONENTS THAT ARE TO REMAIN UNTIL NEW SYSTEMS ARE INSTALLED.
 - MAINTAIN EXISTING SYSTEM IN SERVICE UNTIL NEW SYSTEM IS COMPLETE AND READY FOR TIE IN AND SWITCHOVER. DRAIN SYSTEM ONLY TO MAKE SWITCHOVERS AND CONNECTIONS. OBTAIN PERMISSION FROM OWNER BEFORE PARTIALLY OR COMPLETELY DRAINING SYSTEM. MAKE CHANGE-OVER TO NEW SYSTEMS WITH MINIMUM OUTAGE.
 - DISCONNECT AND REMOVE MECHANICAL DEVICES AND EQUIPMENT SERVING EQUIPMENT THAT HAS BEEN REMOVED.

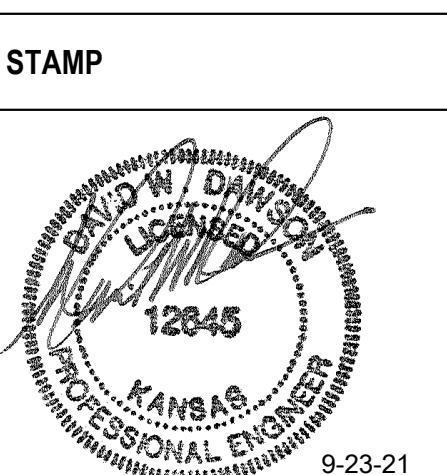
- ### PLUMBING GENERAL NOTES:
- THESE NOTES APPLY TO ALL MECHANICAL SHEETS AND TRADES, INCLUDING BUT NOT LIMITED TO, FIRE PROTECTION, PLUMBING, VENTILATION, PIPING AND TEMPERATURE CONTROL.
- THE SYMBOLS AND THE MATERIAL LIST ARE FOR THE CONVENIENCE OF THE CONTRACTOR. CONTRACTOR SHALL VERIFY QUANTITIES AND FURNISH ALL MATERIALS REQUIRED FOR FULLY OPERATIONAL SYSTEMS, WHETHER SPECIFIED OR NOT.
 - CATALOG NUMBERS SHALL NOT BE CONSIDERED COMPLETE, BUT ARE GIVEN AS AN AID TO THE CONTRACTOR AND TO INDICATE THE QUALITY REQUIRED. CONTRACTOR IS RESPONSIBLE FOR A COMPLETE DESCRIPTION OF MATERIAL ON THESE DRAWINGS AND IN THE SPECIFICATIONS BEFORE ORDERING. THE DESCRIPTION OF THE MATERIAL TAKES PRECEDENCE OVER THE CATALOG NUMBER. THE FIRST MANUFACTURER LISTED IS THE BASIS OF DESIGN.
 - CONTRACTOR SHALL VERIFY THAT FIXTURES SUPPLIED ARE APPROVED PER ALL APPLICABLE STATE, LOCAL AND GOVERNING AUTHORITIES.
 - ALL FIXTURES SHALL CONFORM TO FEDERAL ACT 5 3874
 - INVERT ELEVATIONS ARE FROM EXISTING DRAWINGS AND MAY NOT BE ACCURATE. VERIFY ALL ELEVATIONS BEFORE BEGINNING WORK.
 - VERIFY UNDERGROUND PIPE SIZES, INVERT ELEVATIONS, AND LOCATIONS PRIOR TO BEGINNING ANY WORK.
 - REFER TO THE PLUMBING ROUGH-IN SCHEDULE FOR THE SIZES OF BRANCH PIPES TO PLUMBING FIXTURES.
 - EXISTING CONDITIONS ON DEMOLITION PLANS ARE PROVIDED TO INDICATE THE GENERAL SCOPE OF ITEMS TO BE REMOVED. REFER TO SPECIFICATION SECTION 22 05 05 FOR ADDITIONAL DEMOLITION INFORMATION.
 - P.C. SHALL CUT AND PATCH EXISTING AS REQUIRED FOR NEW OR DEMOLITION WORK UNLESS NOTED OTHERWISE. REFER TO SPECIFICATION SECTION 22 05 05 FOR ADDITIONAL INFORMATION.

- ### MECHANICAL GENERAL NOTES:
- THESE NOTES APPLY TO ALL MECHANICAL SHEETS AND TRADES, INCLUDING BUT NOT LIMITED TO, FIRE PROTECTION, PLUMBING, VENTILATION, PIPING AND TEMPERATURE CONTROL.
- DRAWINGS SHOWING LOCATIONS OF EQUIPMENT, DUCTWORK, PIPING, ETC. ARE DIAGRAMMATIC AND MAY NOT ALWAYS REFLECT EXACT INSTALLATION CONDITIONS. DRAWINGS SHOW THE GENERAL ARRANGEMENT OF DUCTWORK, PIPING, EQUIPMENT, ETC. AND MAY NOT INCLUDE ALL OFFSETS AND FITTINGS REQUIRED FOR COMPLETE INSTALLATION. THE DRAWINGS SHALL BE FOLLOWED AS CLOSELY AS ACTUAL BUILDING CONDITIONS AND THE WORK OF OTHERS WILL PERMIT.
 - DO NOT SCALE DRAWINGS. VERIFY ALL DIMENSIONS AND CLEARANCES FROM ARCHITECTURAL, STRUCTURAL, SUBMITTALS, AND OTHER APPROPRIATE DRAWINGS OR PHYSICALLY AT SITE. REVIEW ALL DRAWINGS, INCLUDING THOSE OF OTHER TRADES.
 - COORDINATE ALL WORK WITH ALL OTHER TRADES PRIOR TO INSTALLATION TO PROVIDE CLEARANCES REQUIRED FOR OPERATION, MAINTENANCE, CODE COMPLIANCE, AND TO VERIFY NON-INTERFERENCE WITH OTHER WORK. DO NOT FABRICATE PRIOR TO VERIFICATION OF NECESSARY CLEARANCES FOR ALL TRADES. BRING ANY INTERFERENCES OR CONFLICTS TO THE ATTENTION OF THE ARCHITECT/ENGINEER BEFORE PROCEEDING WITH FABRICATION OR EQUIPMENT ORDERS. ALL VALVES MUST BE LOCATED WITH REASONABLE ACCESS FOR SERVICE, MAINTENANCE, AND FUNCTION.
 - REVIEW SPACE REQUIREMENTS OF EQUIPMENT SPECIFIED OR SUBSTITUTED AND MAKE REASONABLE ACCOMMODATIONS IN LAYOUT AND POSITIONING TO PROVIDE PROPER ACCESS.
 - ANY CHANGES REQUIRED TO ELIMINATE CONFLICTS OR THAT RESULT FROM A FAILURE TO COORDINATE SHALL BE MADE BY THE CONTRACTOR WITHOUT ADDITIONAL COST OR EXPENSE TO OTHERS.
 - EACH CONTRACTOR IS RESPONSIBLE FOR ALL COSTS ASSOCIATED WITH ELECTRICAL CHANGES REQUIRED FOR EQUIPMENT PROPOSED THAT DIFFERS FROM THE BASIS OF DESIGN.
 - REFER TO ARCHITECTURAL REFLECTED CEILING PLAN, ELECTRICAL, TECHNOLOGY AUDIO/VISUAL, AND OTHER MECHANICAL PLANS FOR EXACT LOCATIONS OF ALL CEILING MOUNTED DEVICES, OTHER THAN SPRINKLERS.
 - EACH CONTRACTOR IS RESPONSIBLE FOR DAMAGE CAUSED BY THEIR ACTIONS TO WALLS, FLOORS, CEILINGS, AND ROOFS. THE CONTRACTOR WHOSE WORK CAUSES DAMAGE IS RESPONSIBLE FOR PATCHING TO MATCH ORIGINAL CONSTRUCTION, FIRE RATING, AND FINISH.
 - IN AREAS WITH DRYWALL CEILINGS COORDINATE LOCATIONS OF ACCESS PANELS WITH THE GC FOR ACCESS TO VALVES, DUCTWORK ACCESSORIES, DAMPERS, ETC. COORDINATE PANEL TYPE AND COLOR WITH ARCHITECT. NOTIFY THE GC OF THE REQUIRED ACCESS PANELS PRIOR TO BIDDING.
 - SEAL ALL FLOOR, WALL, AND ROOF PENETRATIONS AIRTIGHT WHERE CONDUITS, PIPING, AND DUCTS PENETRATE. PENETRATIONS THROUGH EXTERIOR WALLS AND ROOF SHALL BE SEALED AIRTIGHT WITH WATERPROOFING MATERIALS RECOMMENDED BY MANUFACTURER FOR OUTDOOR USE.
 - CAULK ALL PIPE AND DUCT PENETRATIONS OF FULL HEIGHT NON-FIRE RATED WALL, PARTITION, FLOOR, AND ROOF ASSEMBLIES. THIS IS ESSENTIAL TO PREVENT NOISE TRANSMISSION FROM ONE ROOM TO ANOTHER AND TO PROVIDE THE DESIRED NC LEVELS WITHIN ROOMS.
 - WHERE PIPES AND DUCTS ARE SHOWN TO PENETRATE FLOORS, PROVIDE SLEEVED OPENINGS WITH THE TOP EDGE RAISED ABOVE FLOOR SURFACE IN ACCORDANCE WITH ALL RELEVANT SPEC SECTIONS. SEAL SLEEVE PERIMETER TO BE WATERTIGHT.
 - EQUIPMENT SIZES AND SERVICE CLEARANCE REQUIREMENTS VARY AMONG DIFFERENT MANUFACTURERS. CONSULT APPROVED SHOP DRAWINGS FOR EQUIPMENT SIZES AND REQUIRED SERVICE CLEARANCES. COORDINATE WITH LAYOUT OF EQUIPMENT PADS, PIPING, DUCTWORK, ETC.
 - DO NOT BLOCK TUBE PULL OR EQUIPMENT SERVICE CLEARANCES.
 - MAINTAIN MINIMUM 3'-0" CLEARANCE IN FRONT OF ALL ELECTRICAL PANELS, MOTOR STARTERS, SWITCHES, AND DISCONNECTS.
 - PROVIDE CONCRETE EQUIPMENT PAD FOR ALL FLOOR MOUNTED EQUIPMENT. PAD SHALL EXTEND MINIMUM 6" BEYOND ALL SIDES OF EQUIPMENT.
 - DO NOT SUPPORT EQUIPMENT, PIPING, OR DUCTWORK FROM METAL DECKING OR OTHER NON-STRUCTURAL BUILDING ELEMENTS. ANCHORS EMBEDDED IN CONCRETE SHALL BE CRACKED CONCRETE APPROVED IN ACCORDANCE WITH SPECIFICATIONS.

Revisions:	Date:

CONSULTANT
Engineering: IMEG Corp. 15 Sunnen Drive, Suite 104 St. Louis, MO 63143 (314) 645-1132

ARCHITECT/ENGINEER OF RECORD
A/E: Calvin L. Hinz Architects P.C. 3705 N. 200th Street Elkhorn, NE 68022 (402) 291-6941



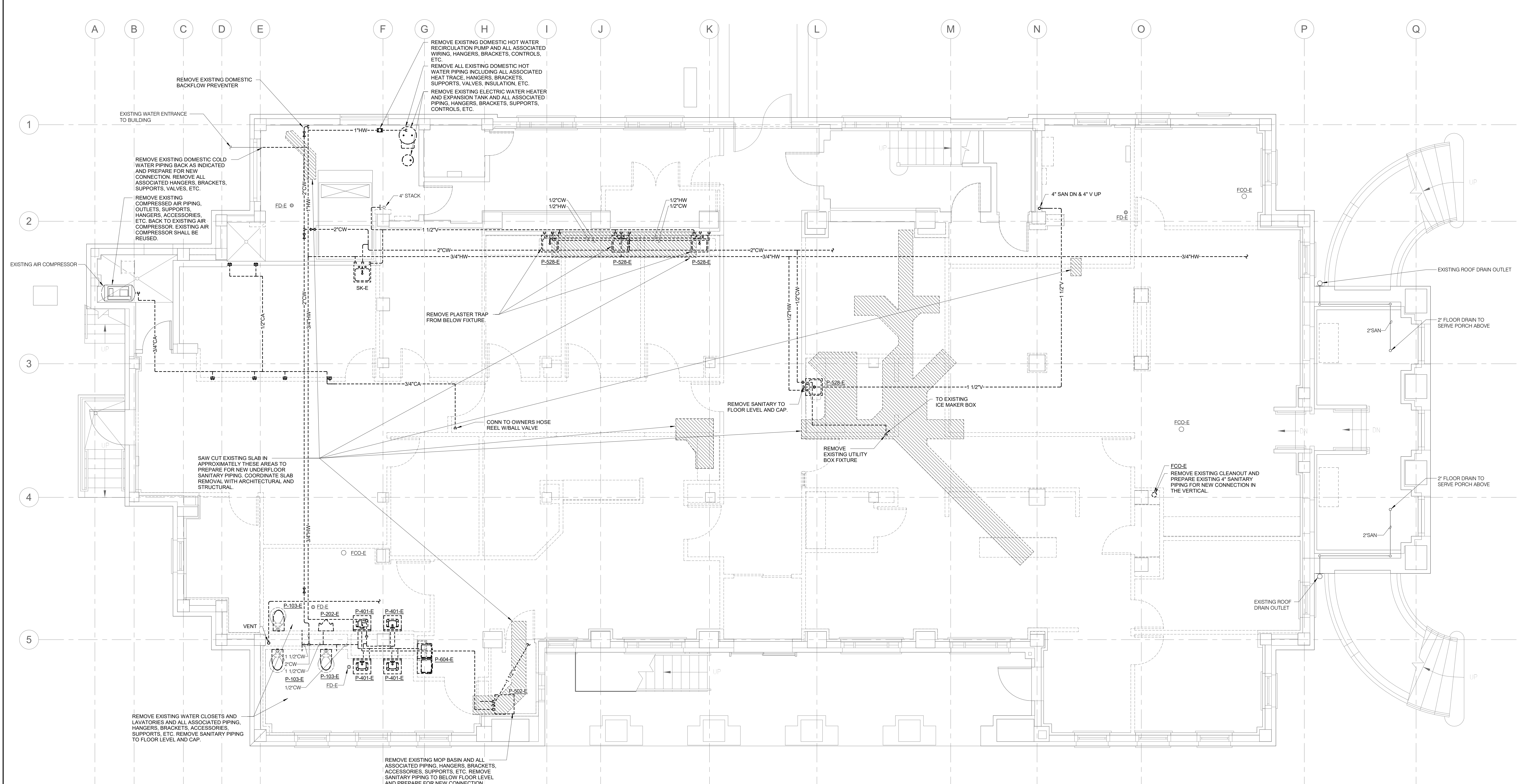
Office of Construction and Facilities Management
VA U.S. Department of Veterans Affairs

Drawing Title PLUMBING COVERSHEET
Approved:

Phase BID DOCUMENTS
FULLY SPRINKLERED

Project Title Renovate and Repair Structural, Building 4	Project Number 589A7-21-108
Location Wichita, KS	Building Number 4
Issue Date 9/23/2021	Checked MATKAH
Drawn KATDEN	Drawing Number P-001

SHEET NOTES:
 1. EXISTING CONDITIONS SHOWN ARE BASED ON INFORMATION AVAILABLE FROM EXISTING DRAWINGS AND LIMITED FIELD VERIFICATION. CONTRACTOR SHALL FIELD VERIFY ALL EXISTING CONDITIONS PRIOR TO BEGINNING WORK.

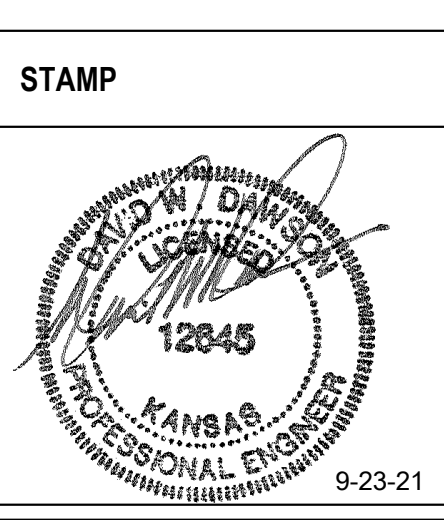


1 BASEMENT PLAN - PLUMBING DEMOLITION
 1/4" = 1'-0"

Revisions:	Date:

CONSULTANT
 Engineering:
 IMEG Corp.
 15 Sunnen Drive, Suite 104
 St. Louis, MO 63143
 (314) 645-1132

ARCHITECT/ENGINEER OF RECORD
 A/E:
 Calvin L. Hinz Architects P.C.
 3705 N. 200th Street
 Elkhorn, NE 68022
 (402) 291-6941



Office of Construction and Facilities Management
 VA U.S. Department of Veterans Affairs

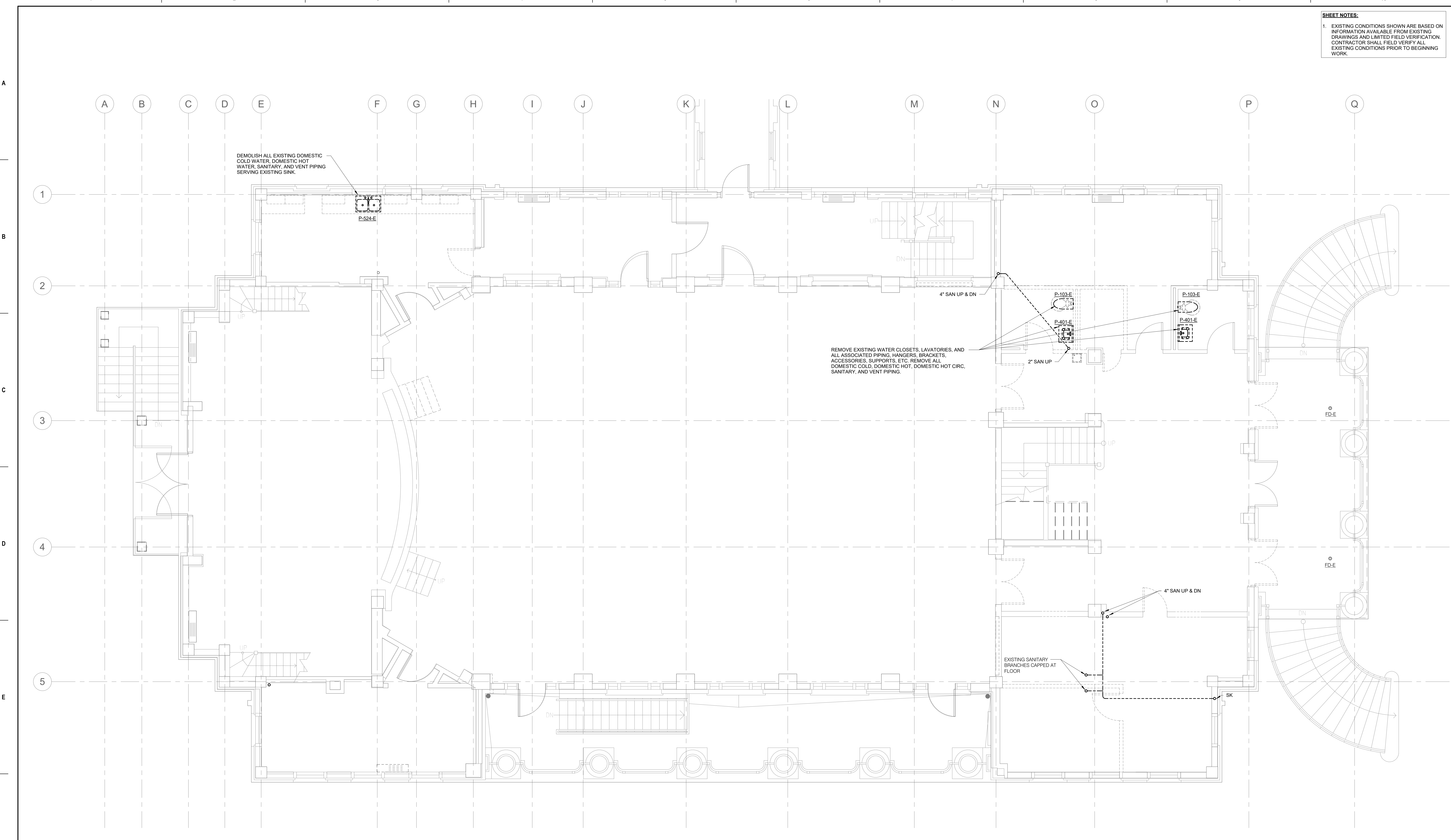
Drawing Title
BASEMENT PLAN - PLUMBING DEMOLITION
 Approved:

Phase
BID DOCUMENTS
FULLY SPRINKLERED

Project Title
 Renovate and Repair Structural, Building 4
 Location
 Wichita, KS
 Issue Date
 9/23/2021
 Checked
 MATKAH
 Drawn
 KATDEN

Project Number
 589A7-21-108
 Building Number
 4
 Drawing Number
 PD101

SHEET NOTES:
 1. EXISTING CONDITIONS SHOWN ARE BASED ON INFORMATION AVAILABLE FROM EXISTING DRAWINGS AND LIMITED FIELD VERIFICATION. CONTRACTOR SHALL FIELD VERIFY ALL EXISTING CONDITIONS PRIOR TO BEGINNING WORK.

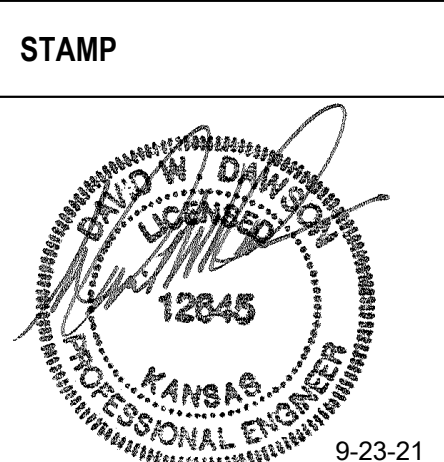


1 FIRST FLOOR PLAN - PLUMBING DEMOLITION
 1/4" = 1'-0"

Revisions:	Date:

CONSULTANT
 Engineering:
 IMEG Corp.
 15 Sunnen Drive, Suite 104
 St. Louis, MO 63143
 (314) 645-1132

ARCHITECT/ENGINEER OF RECORD
 A/E:
 Calvin L. Hinz Architects P.C.
 3705 N. 200th Street
 Elkhorn, NE 68022
 (402) 291-6941



Office of
 Construction
 and Facilities
 Management
 VA U.S. Department
 of Veterans
 Affairs

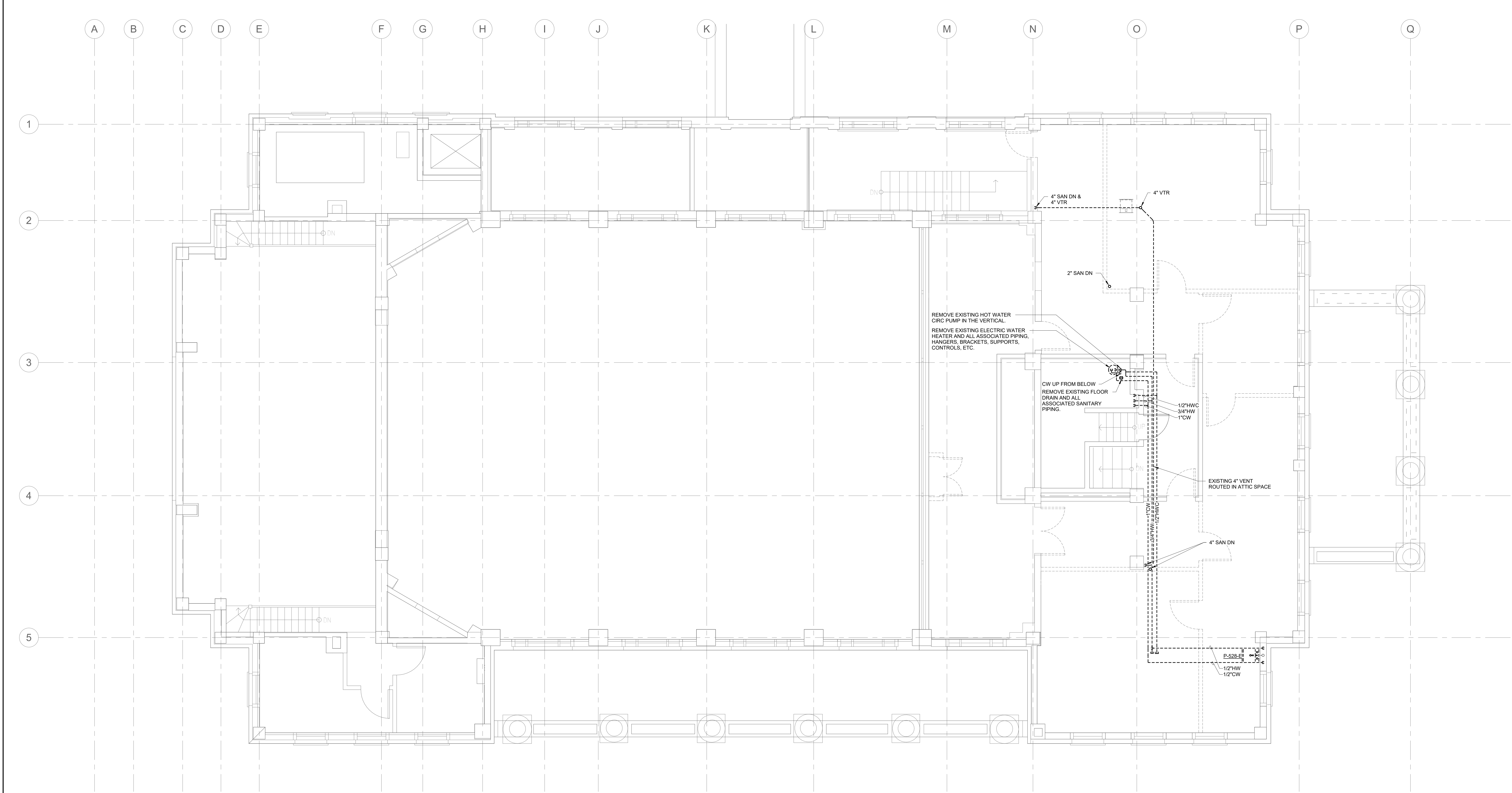
Drawing Title
FIRST FLOOR PLAN - PLUMBING DEMOLITION
 Approved:

Phase
BID DOCUMENTS
FULLY SPRINKLERED

Project Title
 Renovate and Repair Structural,
 Building 4
 Location
 Wichita, KS
 Issue Date
 9/23/2021
 Checked
 MATKAH
 Drawn
 KATDEN

Project Number
 589A7-21-108
 Building Number
 4
 Drawing Number
 PD102

SHEET NOTES:
 1. EXISTING CONDITIONS SHOWN ARE BASED ON INFORMATION AVAILABLE FROM EXISTING DRAWINGS AND LIMITED FIELD VERIFICATION. CONTRACTOR SHALL FIELD VERIFY ALL EXISTING CONDITIONS PRIOR TO BEGINNING WORK.

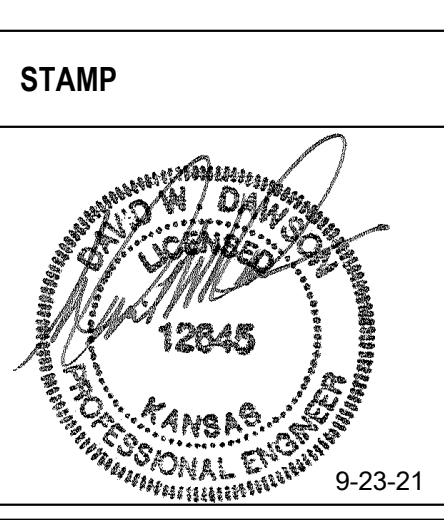


1 SECOND FLOOR PLAN - PLUMBING DEMOLITION
 1/4" = 1'-0"

Revisions:	Date:

CONSULTANT
Engineering:
 IMEG Corp.
 15 Sunnen Drive, Suite 104
 St. Louis, MO 63143
 (314) 645-1132

ARCHITECT/ENGINEER OF RECORD
A/E:
 Calvin L. Hinz Architects P.C.
 3705 N. 200th Street
 Elkhorn, NE 68022
 (402) 291-6941



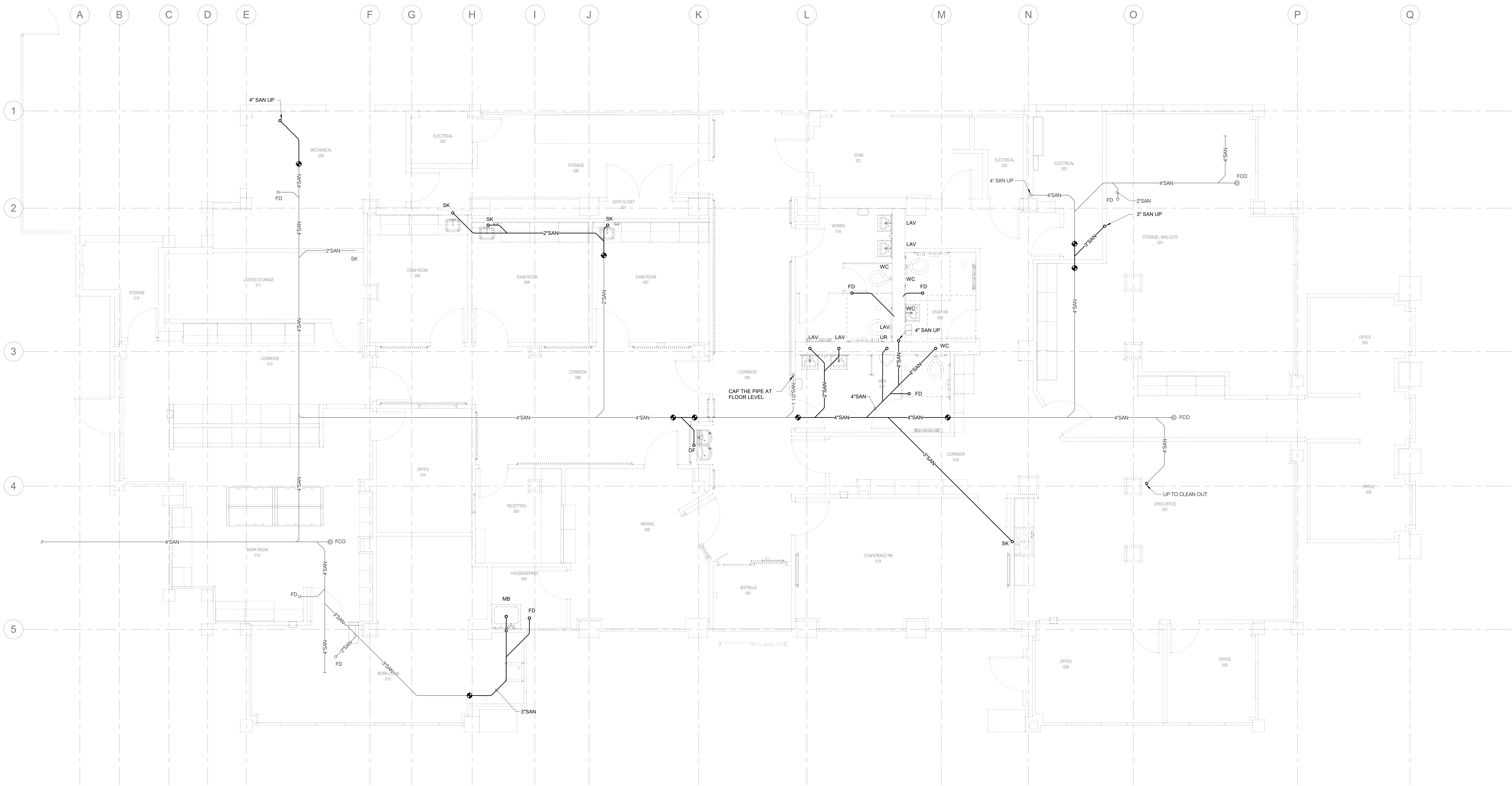
Office of
 Construction
 and Facilities
 Management
VA U.S. Department
 of Veterans
 Affairs

Drawing Title
SECOND FLOOR PLAN - PLUMBING DEMOLITION
 Approved:

Phase
BID DOCUMENTS
FULLY SPRINKLERED

Project Title
 Renovate and Repair Structural,
 Building 4
 Location
 Wichita, KS
 Issue Date
 9/23/2021
 Checked
 MATKAH
 Drawn
 KATDEN

Project Number
 589A7-21-108
 Building Number
 4
 Drawing Number
 PD103

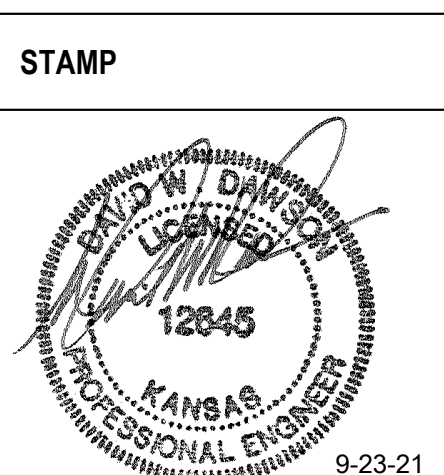


1 UNDERFLOOR PLAN - PLUMBING
 1/4" = 1'-0"

Revisions:	Date:

CONSULTANT
 Engineering:
 IMEG Corp.
 15 Sunnen Drive, Suite 104
 St. Louis, MO 63143
 (314) 645-1132

ARCHITECT/ENGINEER OF RECORD
 A/E:
 Calvin L. Hinz Architects P.C.
 3705 N. 200th Street
 Elkhorn, NE 68022
 (402) 291-6941



Office of Construction and Facilities Management
 VA U.S. Department of Veterans Affairs

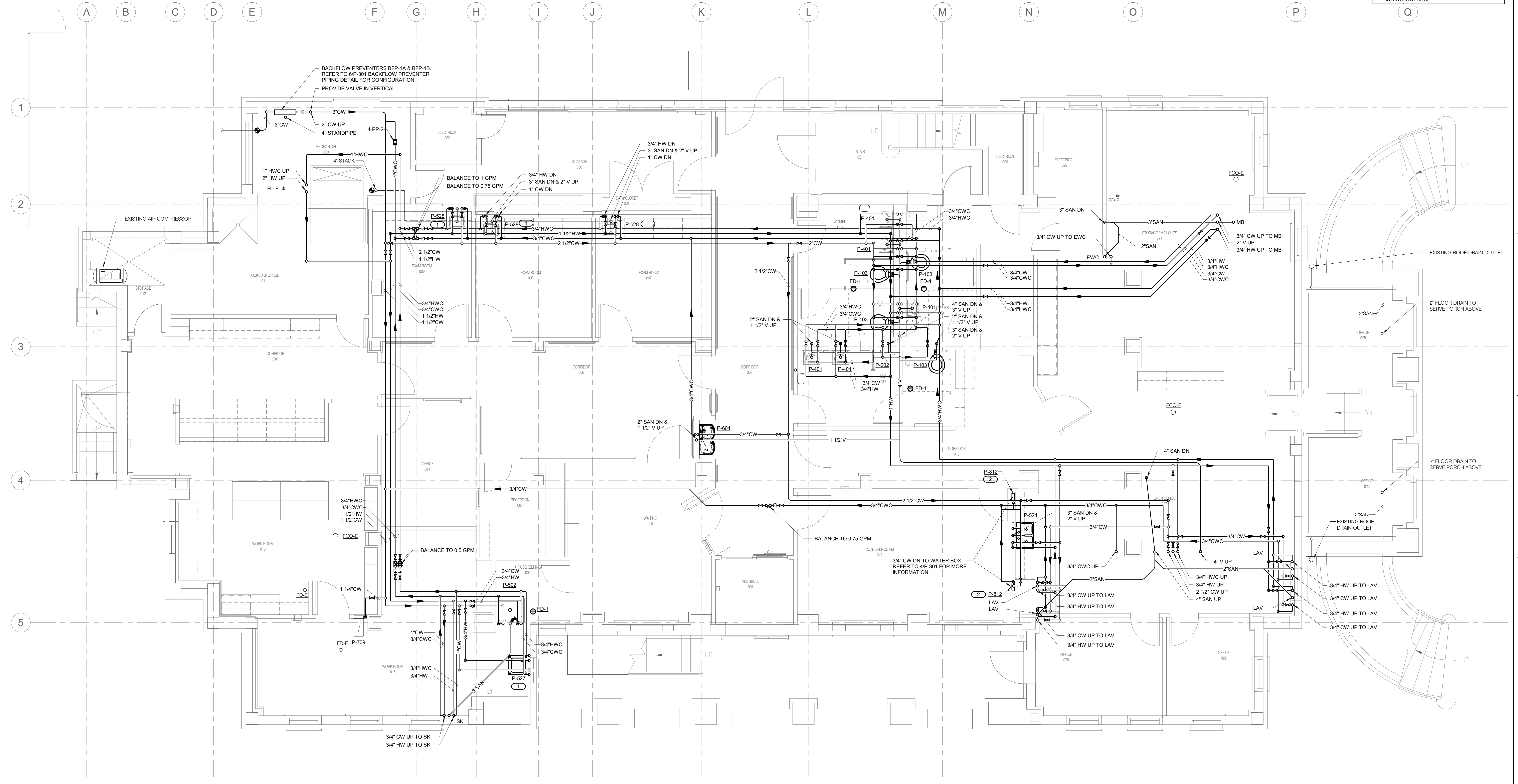
Drawing Title
UNDERFLOOR PLAN - PLUMBING
 Approved:

Phase
BID DOCUMENTS
FULLY SPRINKLERED

Project Title
 Renovate and Repair Structural, Building 4
 Location
 Wichita, KS
 Issue Date
 9/23/2021
 Checked
 MATKAH
 Drawn
 KATDEN

Project Number
 589A7-21-108
 Building Number
 4
 Drawing Number
P-100

- KEYNOTES: (#)**
1. PROVIDE PLASTER TRAP ON SANITARY PIPING SERVING FIXTURE PRIOR TO FLOOR PENETRATION.
 2. PROVIDE CW CONNECTION TO WATER BOX. EXTEND 1/2" CW LINE TO FRIDGE OR COFFEE MAKER AND PROVIDE BACKFLOW PREVENTER BEHIND UPSTREAM OF FINAL CONNECTION. FRIDGE AND COFFEE MAKER PROVIDED BY OTHERS.
- SHEET NOTES:**
1. EXISTING CONDITIONS SHOWN ARE BASED ON INFORMATION AVAILABLE FROM EXISTING DRAWINGS AND LIMITED FIELD VERIFICATION. CONTRACTOR SHALL FIELD VERIFY ALL EXISTING CONDITIONS PRIOR TO BEGINNING WORK.
 2. ALL NEW FIXTURES REQUIRING HOT WATER SHALL HAVE A POINT OF USE MIXING VALVE TO SUPPLY A HOT WATER TEMPERATURE NOT EXCEEDING 43.3 DEGREES C (110 DEGREES F). COORDINATE REPAIR OF EXISTING SLAB FOR UNDERFLOOR WORK WITH ARCHITECTURAL AND STRUCTURAL.

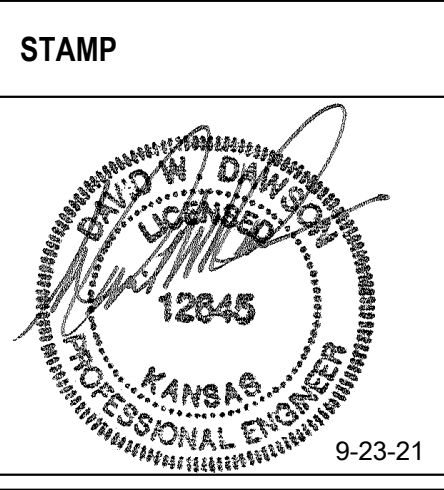


1 BASEMENT PLAN - PLUMBING
 1/4" = 1'-0"
 NORTH

Revisions:	Date:

CONSULTANT
 Engineering:
 IMEG Corp.
 15 Sunnen Drive, Suite 104
 St. Louis, MO 63143
 (314) 645-1132

ARCHITECT/ENGINEER OF RECORD
 A/E:
 Calvin L. Hinz Architects P.C.
 3705 N. 200th Street
 Elkhorn, NE 68022
 (402) 291-6941



Office of
 Construction
 and Facilities
 Management
 VA U.S. Department
 of Veterans
 Affairs

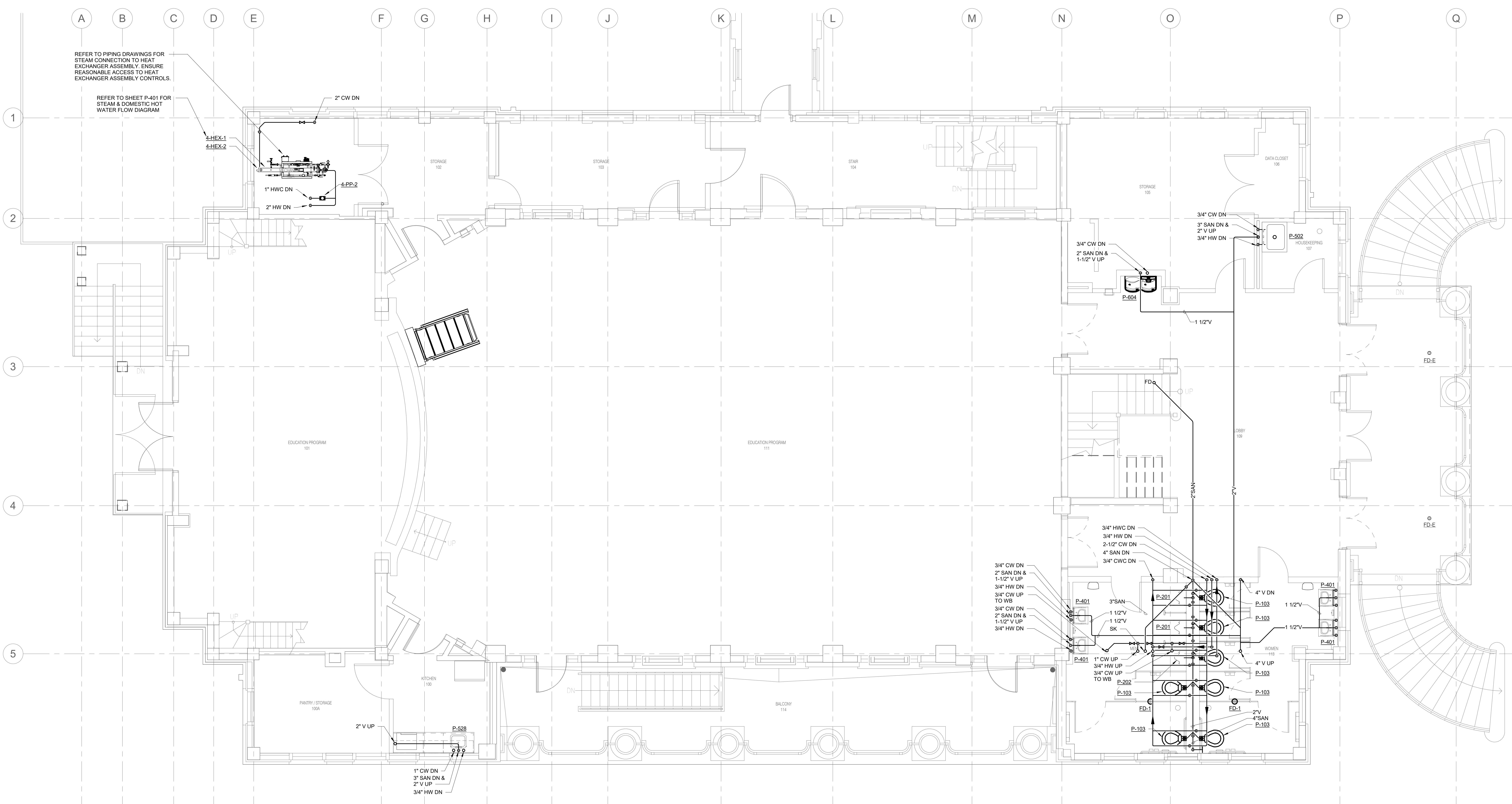
Drawing Title
BASEMENT PLAN - PLUMBING
 Approved:

Phase
BID DOCUMENTS
FULLY SPRINKLERED

Project Title
 Renovate and Repair Structural,
 Building 4
 Location
 Wichita, KS
 Issue Date
 9/23/2021
 Checked
 MATKAH
 Drawn
 KATDEN

Project Number
 589A7-21-108
 Building Number
 4
 Drawing Number
 P-101

SHEET NOTES:
 1. EXISTING CONDITIONS SHOWN ARE BASED ON INFORMATION AVAILABLE FROM EXISTING DRAWINGS AND LIMITED FIELD VERIFICATION. CONTRACTOR SHALL FIELD VERIFY ALL EXISTING CONDITIONS PRIOR TO BEGINNING WORK.

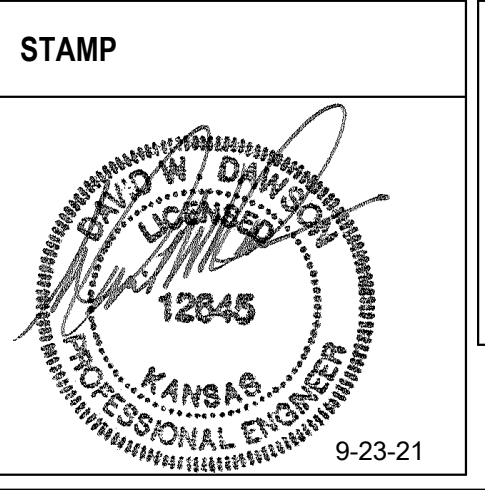


1 FIRST FLOOR PLAN - PLUMBING
 1/4" = 1'-0"

Revisions:	Date:

CONSULTANT
Engineering:
 IMEG Corp.
 15 Sunnen Drive, Suite 104
 St. Louis, MO 63143
 (314) 645-1132

ARCHITECT/ENGINEER OF RECORD
A/E:
 Calvin L. Hinz Architects P.C.
 3705 N. 200th Street
 Elkhorn, NE 68022
 (402) 291-6941



Office of Construction and Facilities Management
 U.S. Department of Veterans Affairs

Drawing Title:
 FIRST FLOOR PLAN - PLUMBING
Approved:

Phase:
 BID DOCUMENTS
 FULLY SPRINKLERED

Project Title:
 Renovate and Repair Structural, Building 4
Location:
 Wichita, KS
Issue Date:
 9/23/2021
Checked:
 MATKAH
Drawn:
 KATDEN

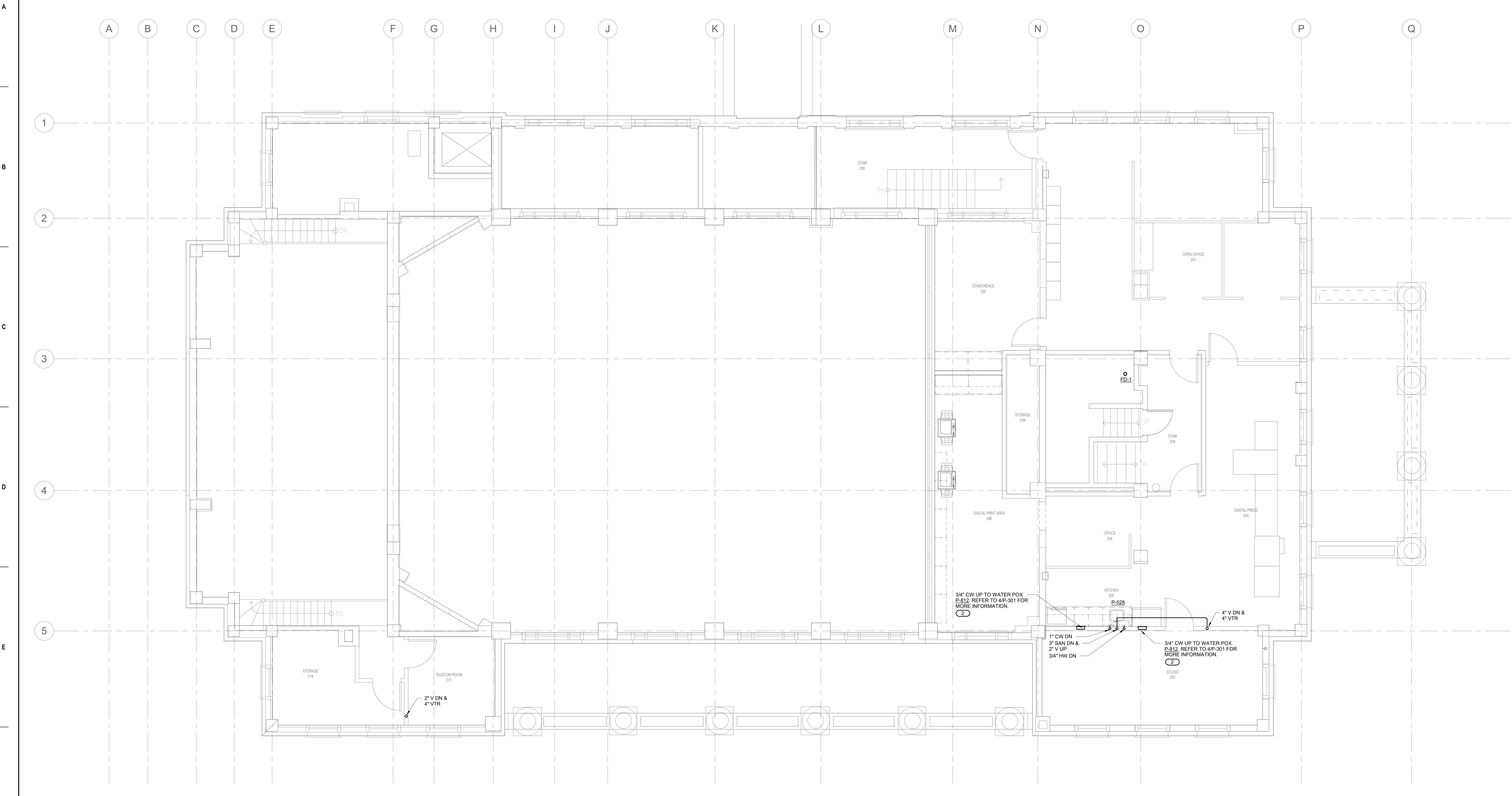
Project Number:
 589A7-21-108
Building Number:
 4
Drawing Number:
 P-102

KEYNOTES: (#)

1. PROVIDE CW CONNECTION TO WATER BOX. EXTEND 1/2" CW LINE TO FRIDGE OR COFFEE MAKER AND PROVIDE BACKFLOW PREVENTER BEHIND UPSTREAM OF FINAL CONNECTION. FRIDGE AND COFFEE MAKER PROVIDED BY OTHERS.

SHEET NOTES:

1. EXISTING CONDITIONS SHOWN ARE BASED ON INFORMATION AVAILABLE FROM EXISTING DRAWINGS AND LIMITED FIELD VERIFICATION. CONTRACTOR SHALL FIELD VERIFY ALL EXISTING CONDITIONS PRIOR TO BEGINNING WORK.



1 SECOND FLOOR PLAN - PLUMBING
1/4" = 1'-0"

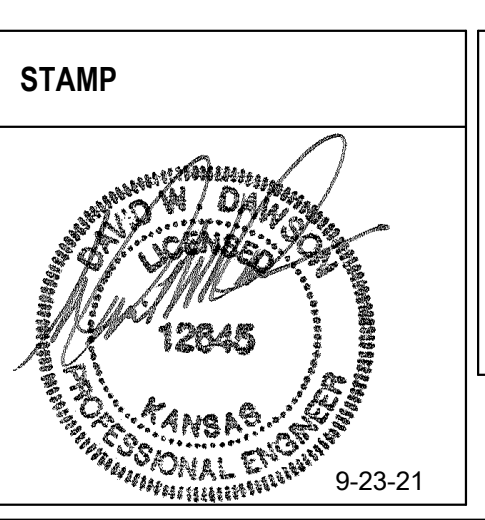
Revisions:	Date:

CONSULTANT

Engineering:
IMEG Corp.
15 Sunnen Drive, Suite 104
St. Louis, MO 63143
(314) 645-1132

ARCHITECT/ENGINEER OF RECORD

A/E:
Calvin L. Hinz Architects P.C.
3705 N. 200th Street
Elkhorn, NE 68022
(402) 291-6941



Office of
Construction
and Facilities
Management

VA U.S. Department
of Veterans
Affairs

Drawing Title
SECOND FLOOR PLAN - PLUMBING

Approved:

Phase
BID DOCUMENTS

FULLY SPRINKLERED

Project Title
Renovate and Repair Structural,
Building 4

Location
Wichita, KS

Issue Date
9/23/2021

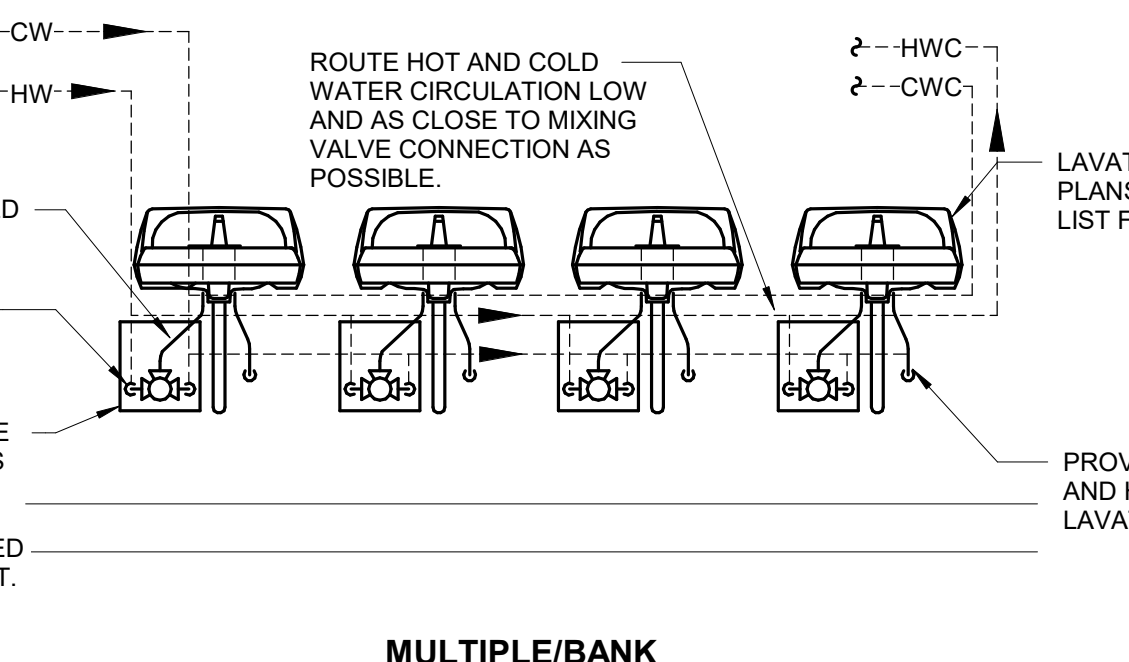
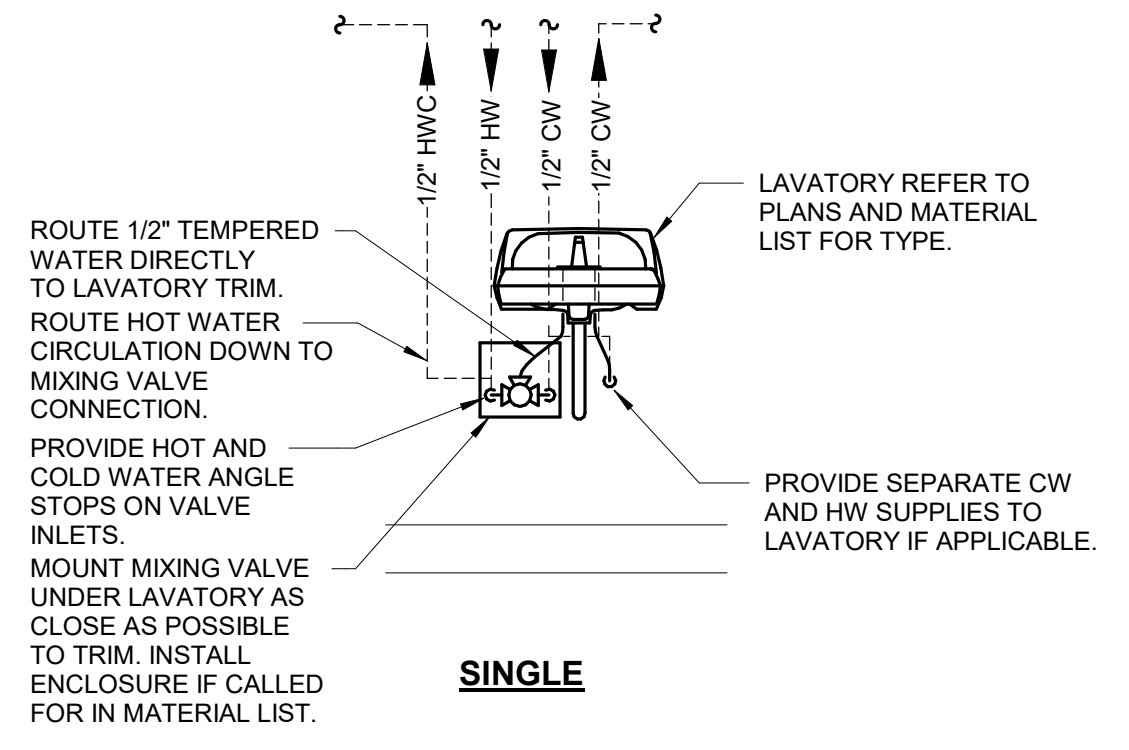
Checked
MATKAH

Drawn
KATDEN

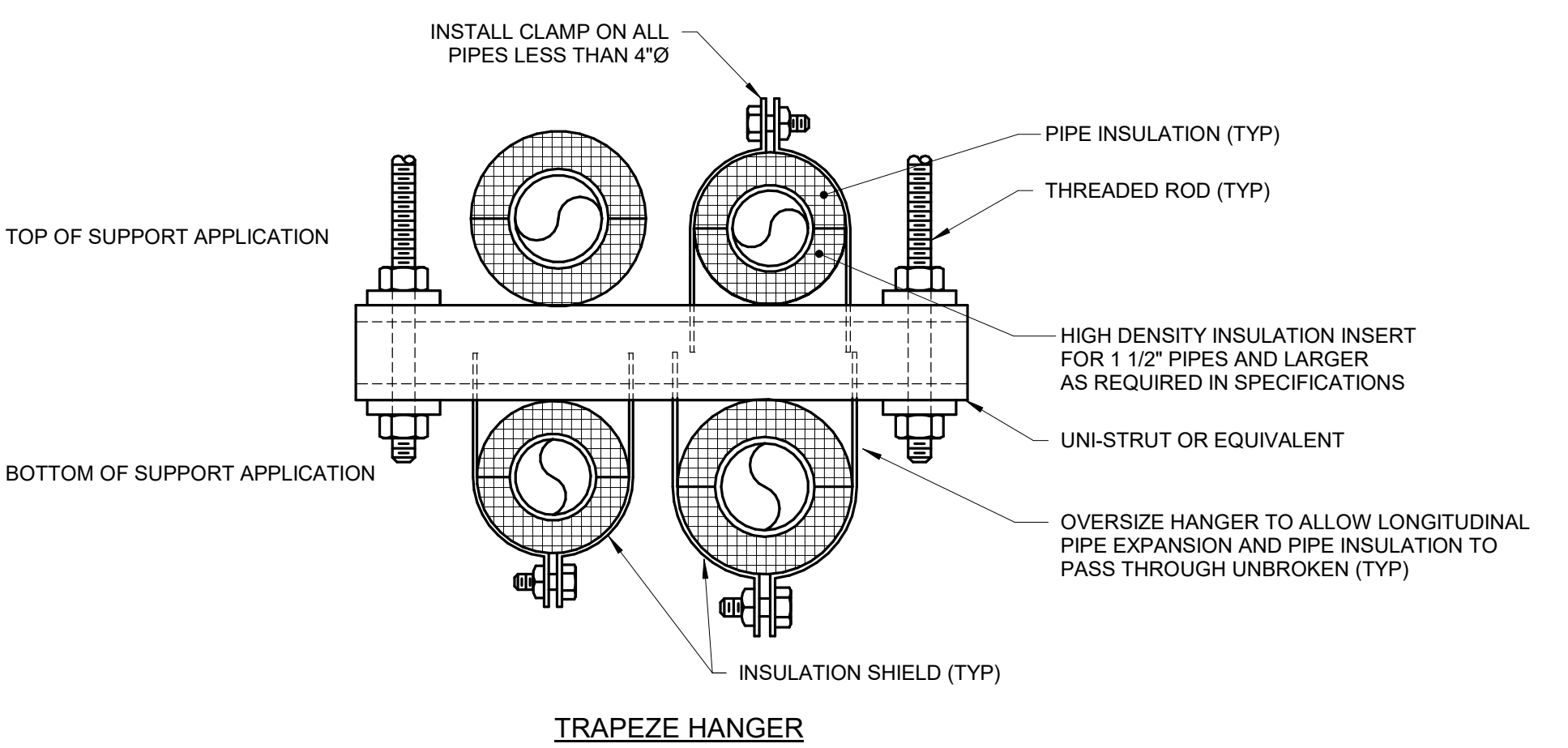
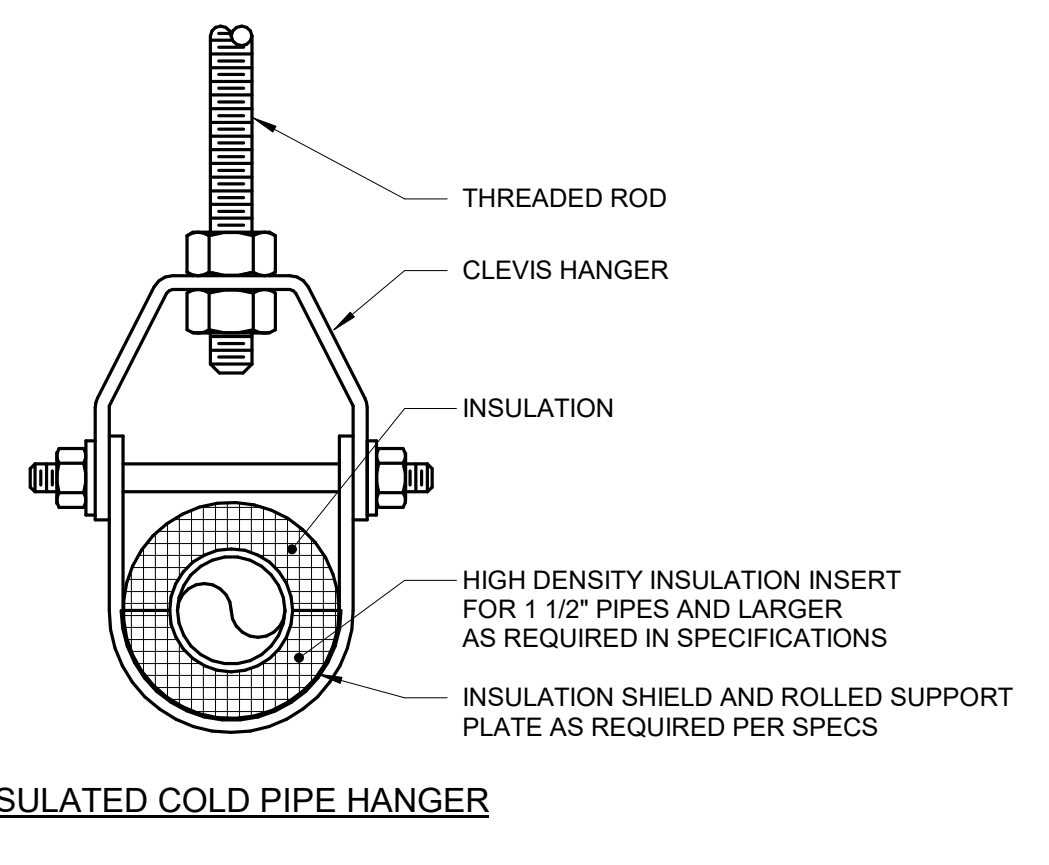
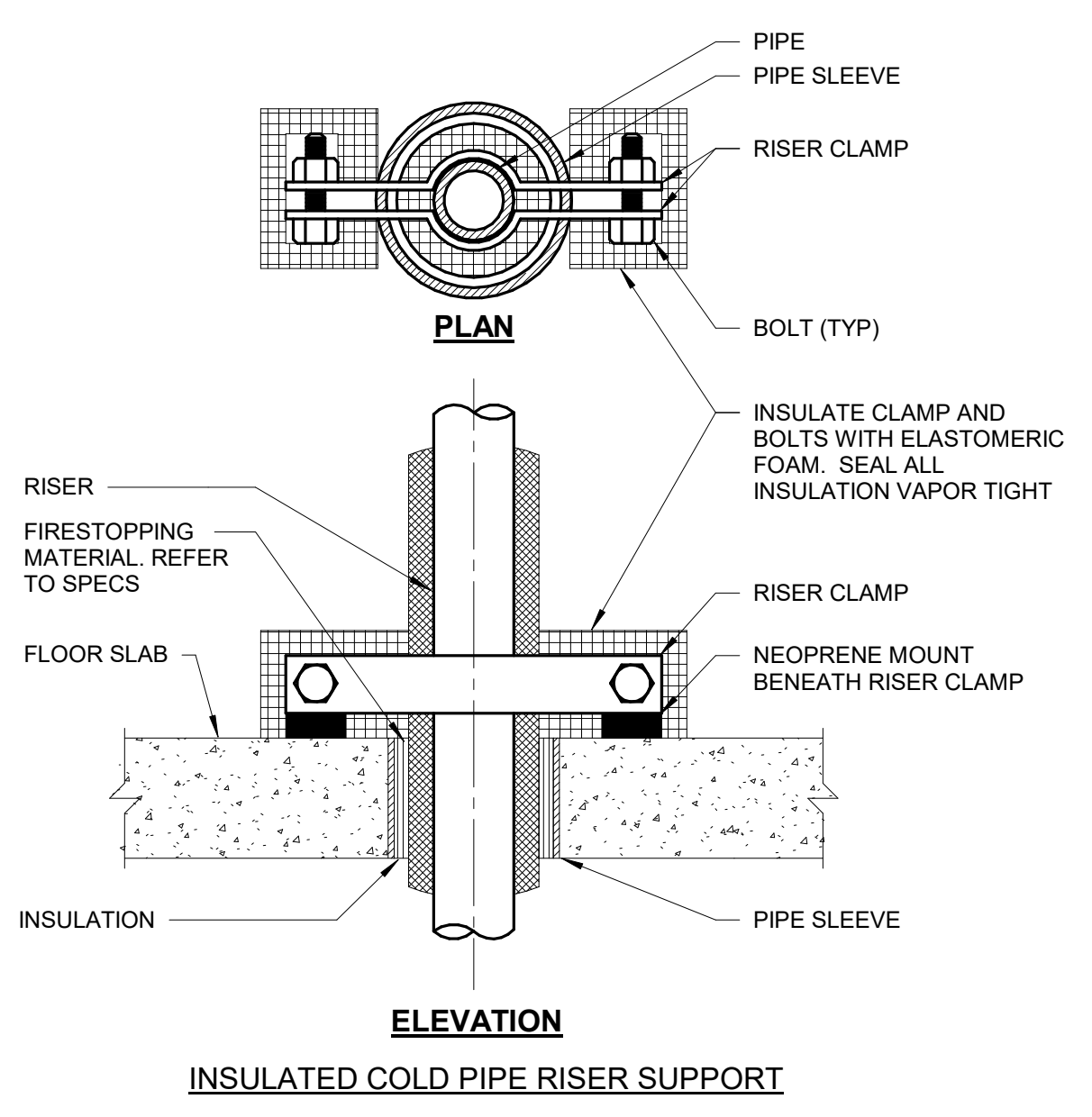
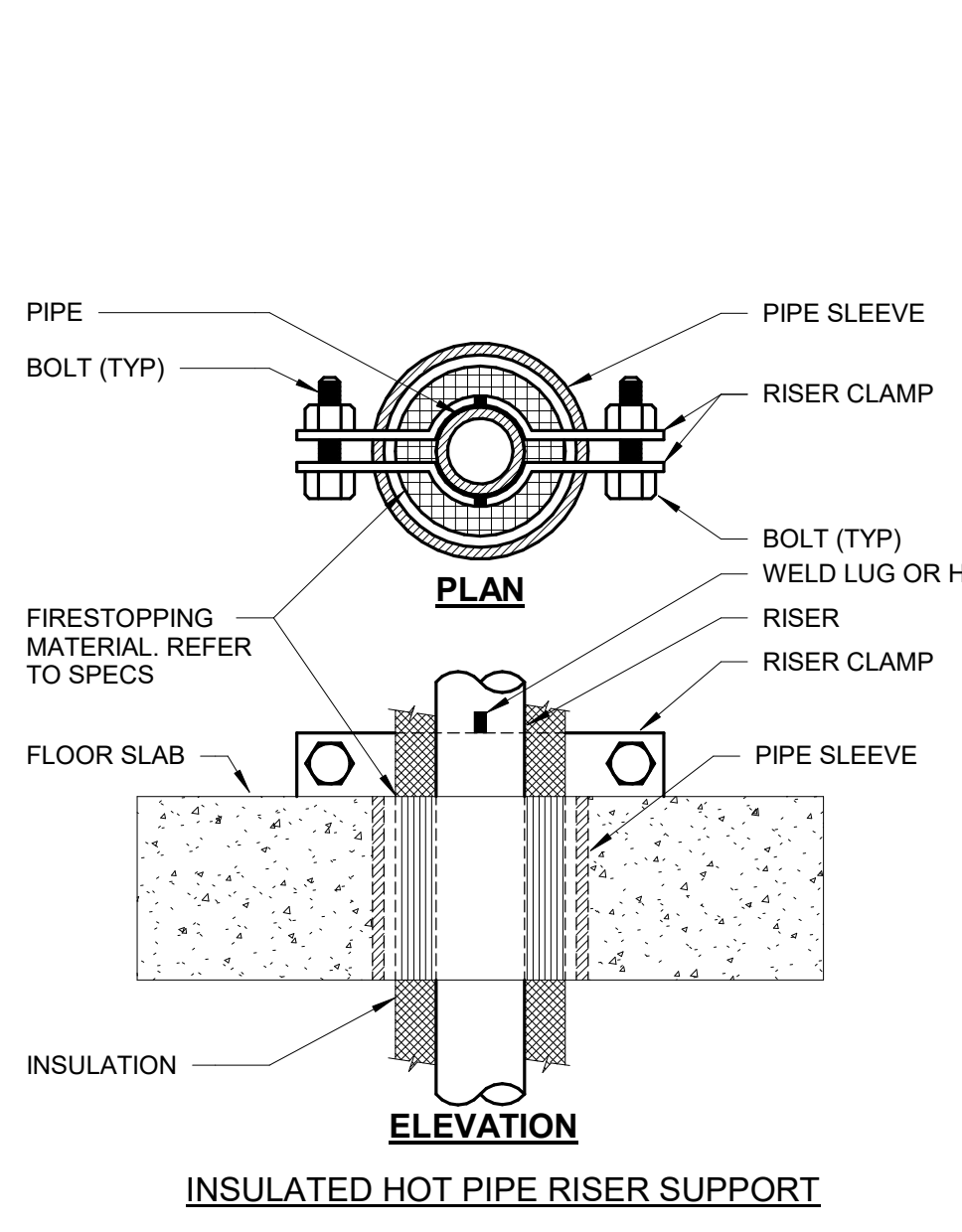
Project Number
589A7-21-108

Building Number
4

Drawing Number
P-103

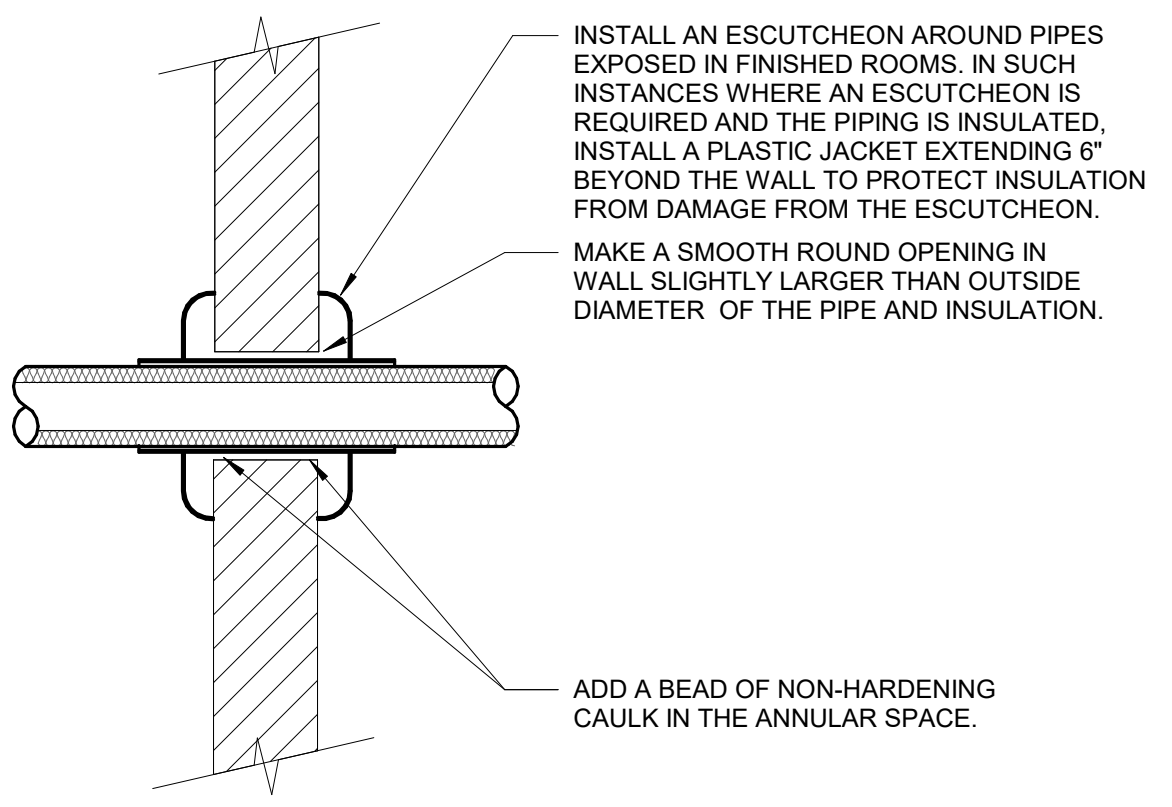


1 LAVATORY AND SINK MIXING VALVE DETAIL
NO SCALE



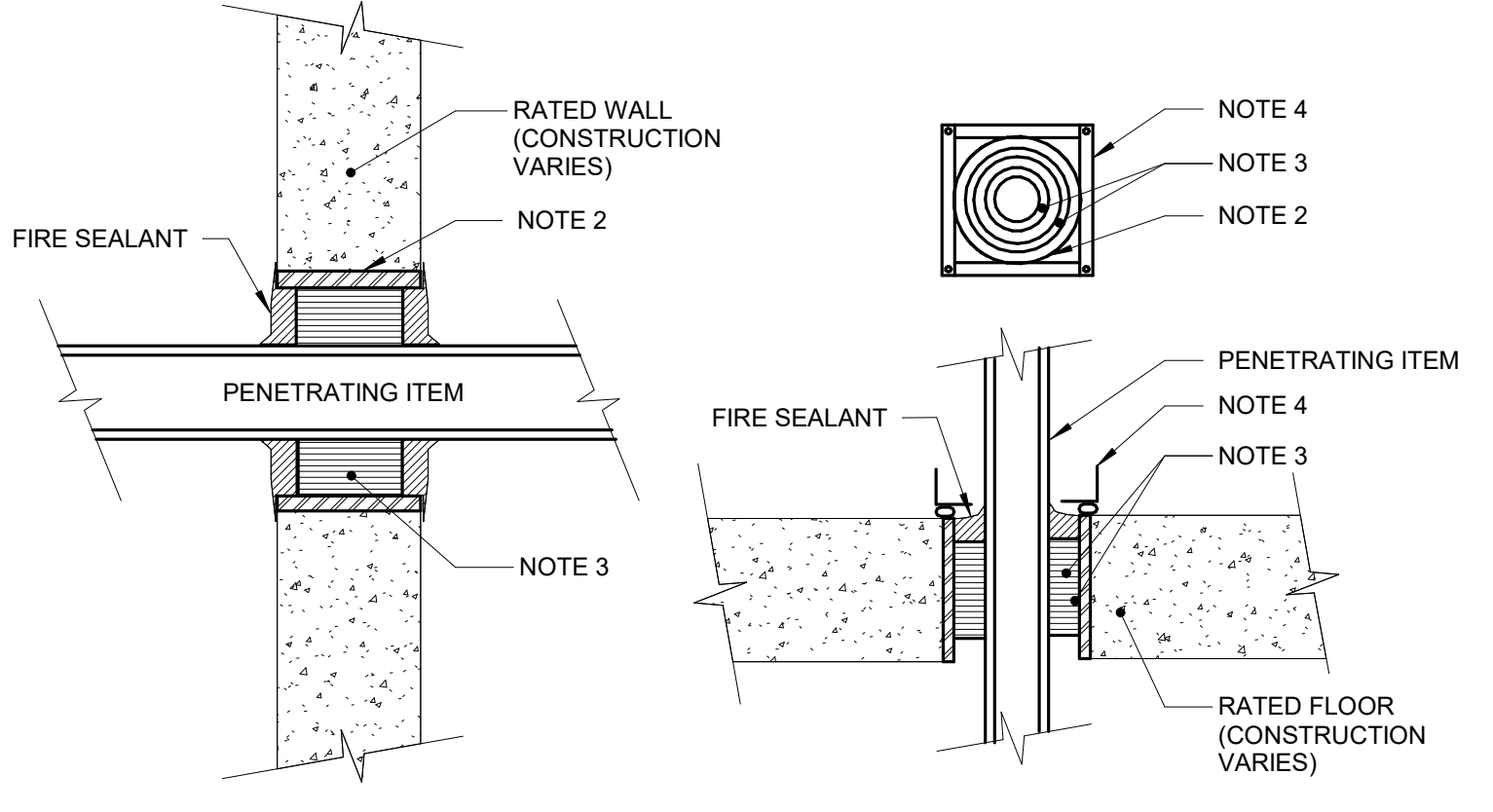
6 PIPE SUPPORT DETAIL
NO SCALE

NOTES:
1. REFER TO SPECIFICATIONS FOR MORE INFORMATION.



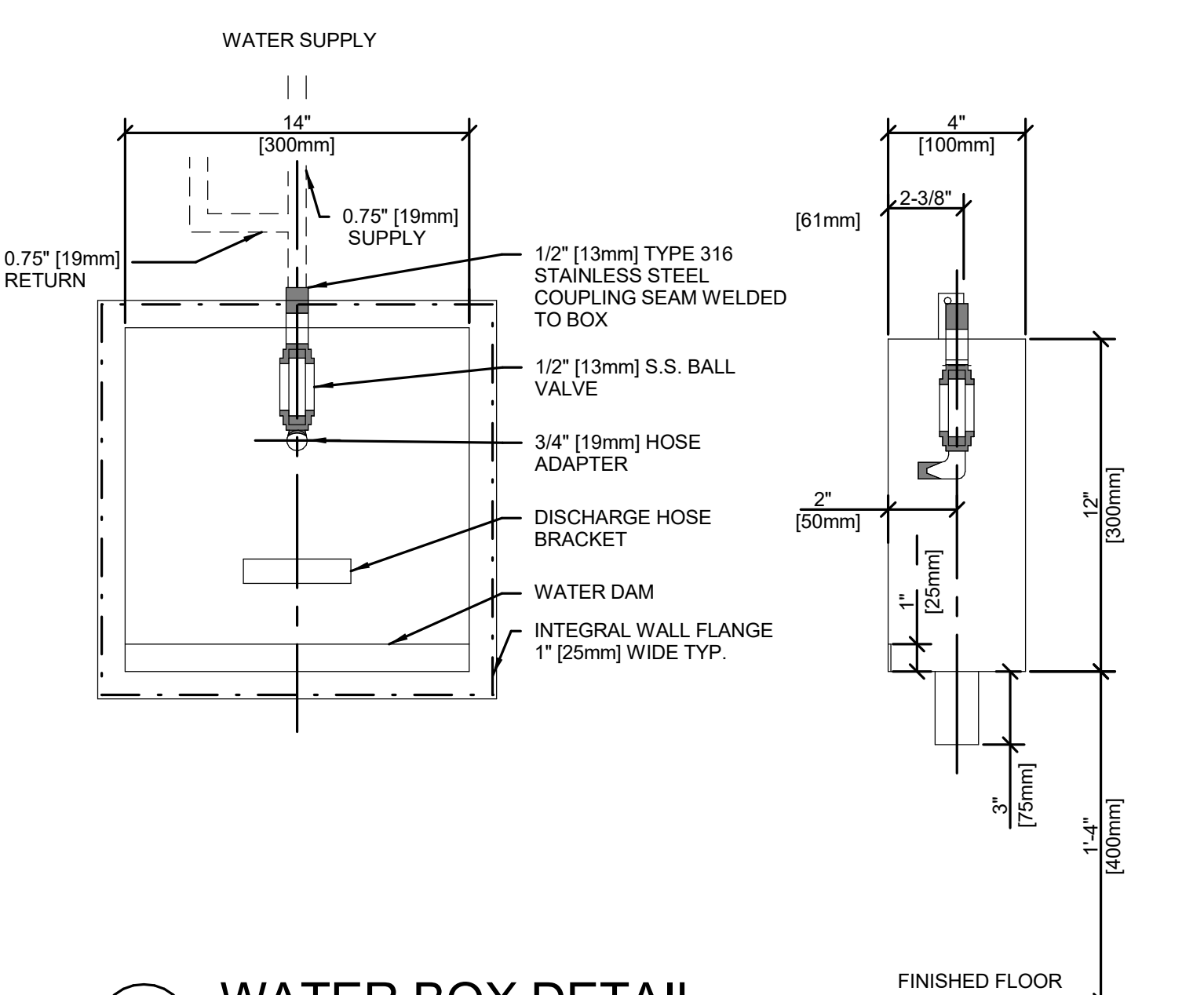
2 PIPE THROUGH NON-FIRE RATED WALL
NO SCALE

NOTES:
1. THIS DETAIL APPLIES TO ALL PIPES. THE INTENTION IS TO CONTINUE THE INSULATION AND VAPOR BARRIER THROUGH ALL PENETRATIONS. PERMIT THERMAL EXPANSION WITHOUT DAMAGING INSULATION, AND TO SEAL AIR TIGHT AROUND INSULATED AND UNINSULATED PIPES FOR NOISE TRANSMISSION CONTROL.
2. FLOOR OPENINGS ARE SIMILAR. SEE SPECIFICATIONS FOR DIFFERENCES BETWEEN FLOOR AND WALL PENETRATIONS.



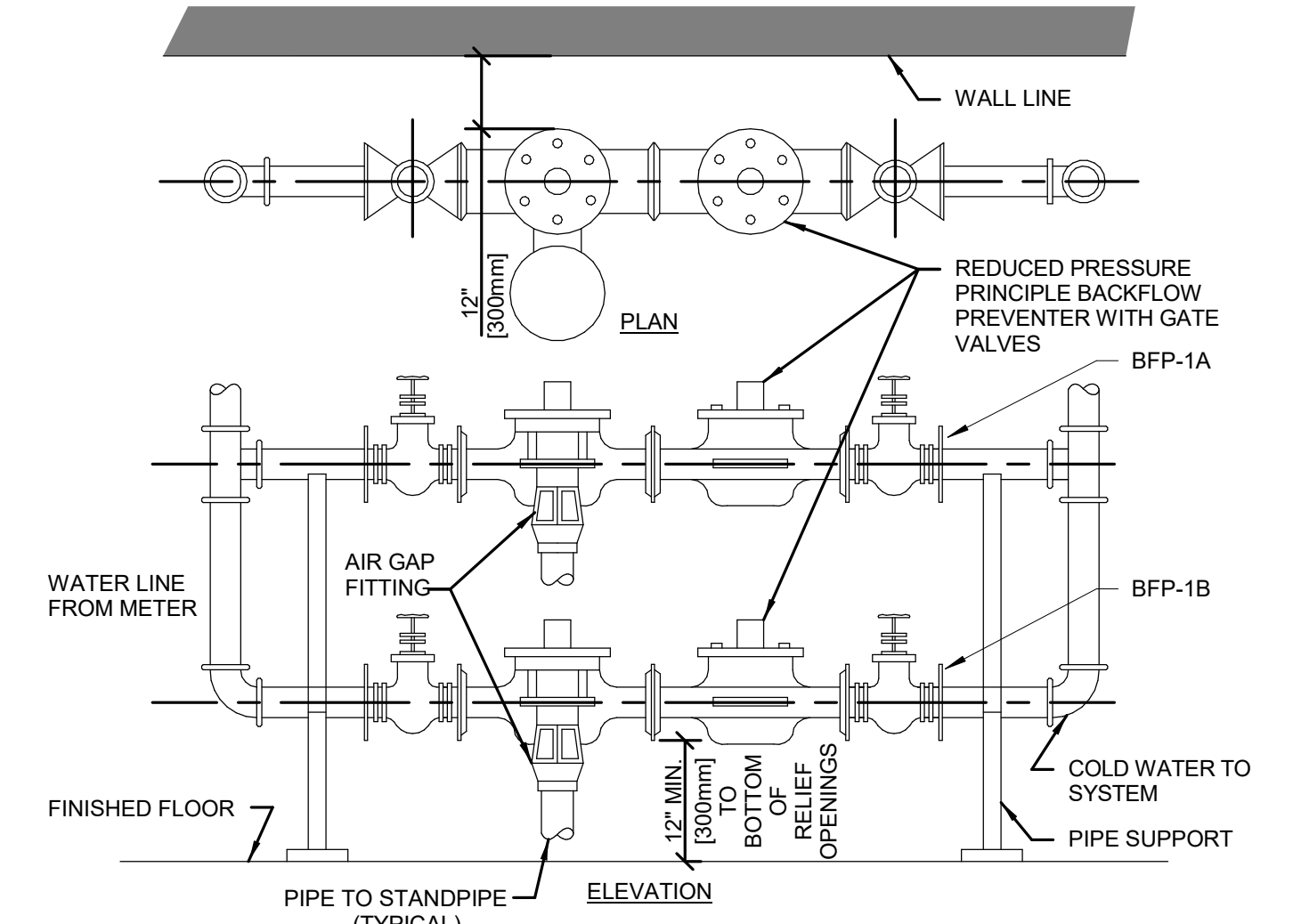
3 RATED FIRE BARRIER PENETRATION
NO SCALE

NOTES:
1. THIS GENERAL DETAIL APPLIES TO ALL ITEMS PENETRATING FIRE RATED WALLS OR FLOORS. THE INTENT IS TO MAINTAIN THE FIRE RATING AND TO ALLOW LONGITUDINAL MOVEMENT.
2. SCHEDULE 5 PIPE SLEEVE EMBEDDED IN WALL OR FLOOR, OR SMOOTH CORE DRILL. EACH CONTRACTOR FURNISHES SLEEVE TO G.C. COORDINATES SLEEVE LOCATIONS AND DEBURS SLEEVE. G.C. BUILDS SLEEVE INTO WALL OR FLOOR ALLOWING NO GAP AROUND SLEEVE. IF SLEEVE IS NOT PROVIDED WHEN WALL OR FLOOR IS BUILT, CONTRACTOR SHALL INSTALL SLEEVE. SLEEVE SIZE SHALL ALLOW ANNUAL SPACE REQUIRED BY THE SELECTED FIRE STOP SYSTEM.
3. INSTALL BACKING MATERIAL, SUCH AS MINERAL WOOL SAFING, AS REQUIRED FOR FIRE STOP SYSTEM. INSTALL IN ACCORDANCE WITH FIRE STOP SYSTEM APPLICATION LISTING. SECURE TO WALL OR FLOOR TO ALLOW LONGITUDINAL MOVEMENT OF PENETRATING ITEM WITHOUT MOVEMENT OF FIRE BARRIER.
4. WATERTIGHT WELDED 1x1/2\"/>



4 WATER BOX DETAIL
NTS

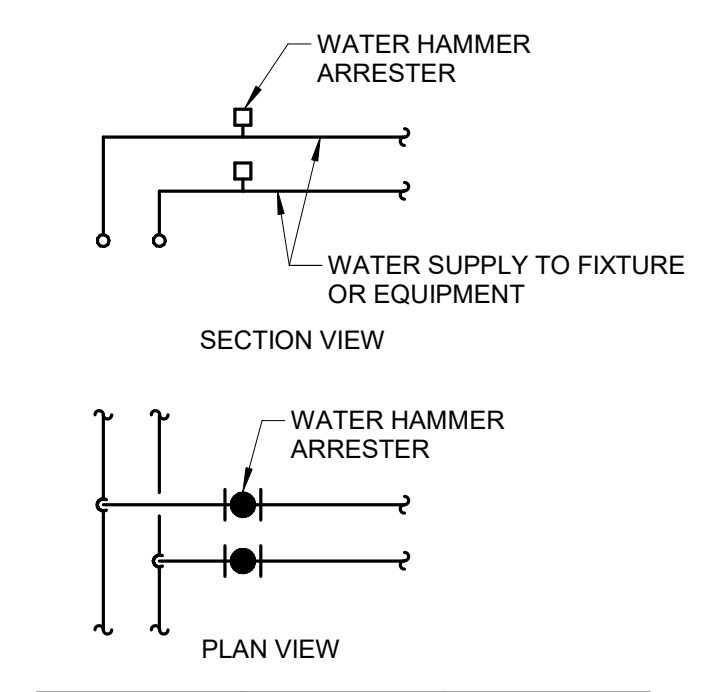
NTS



5 BACKFLOW PREVENTER PIPING DETAIL
NTS

NTS

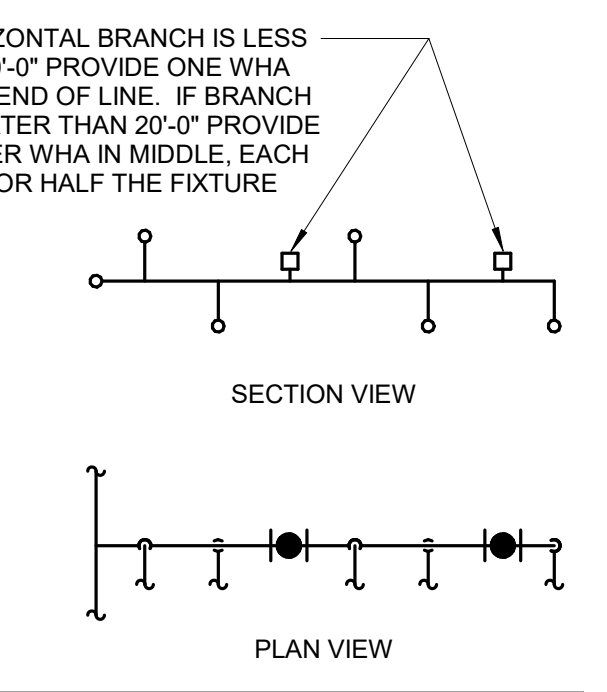
SINGLE / DOUBLE FIXTURE



PDI SIZE	PIPE SIZE	FIXTURE UNIT LOAD
A	1/2"	1-11
B	3/4"	12-32
C	1"	33-60
D	1-1/4"	61-113
E	1-1/2"	114-154
F	2"	155-330

INSTALL WHA'S PER PDI STANDARDS AND MANUFACTURER'S INSTRUCTIONS. INSTALL IN HORIZONTAL OR VERTICAL POSITION, BUT NEVER UPSIDE DOWN. INSTALL IN LINE WITH WATER FLOW DIRECTION IF POSSIBLE. SIZE THE WHA AS SHOWN PER THE TABLES ABOVE. PROVIDE ACCESSIBILITY TO WHA WITH ACCESS PANEL OR INSTALL ABOVE ACCESSIBLE CEILING.

MULTIPLE FIXTURES



FIXTURE UNIT CALCULATION		
FIXTURE	COLD	HOT
WATER CLOSET (F.V.)	10	--
WATER CLOSET (TANK)	5	--
URINAL	5	--
LAVATORY	1.5	1.5
JANITOR'S SINK	3	3
SHOWER/BATH/TUB	2	3
DRINKING FOUNTAIN	2	-
KITCHEN SINK	2	2
ICE MAKER / BEVERAGE	1	-

7 WATER HAMMER ARRESTER LOCATION DETAIL
NO SCALE

NO SCALE

8 TYPICAL WHEELCHAIR LAVATORY DETAIL
NTS

NOTE:
PROVIDE COVER FOR EXPOSED PIPING

Revisions:	Date:

CONSULTANT
Engineering:
IMEG Corp.
15 Sunnen Drive, Suite 104
St. Louis, MO 63143
(314) 645-1132

ARCHITECT/ENGINEER OF RECORD
A/E:
Calvin L. Hinz Architects P.C.
3705 N. 200th Street
Elkhorn, NE 68022
(402) 291-6941

STAMP
Professional Engineer
12845
9-23-21

Office of Construction and Facilities Management
U.S. Department of Veterans Affairs

Drawing Title
PLUMBING DETAILS
Approved:

Phase
BID DOCUMENTS
FULLY SPRINKLERED

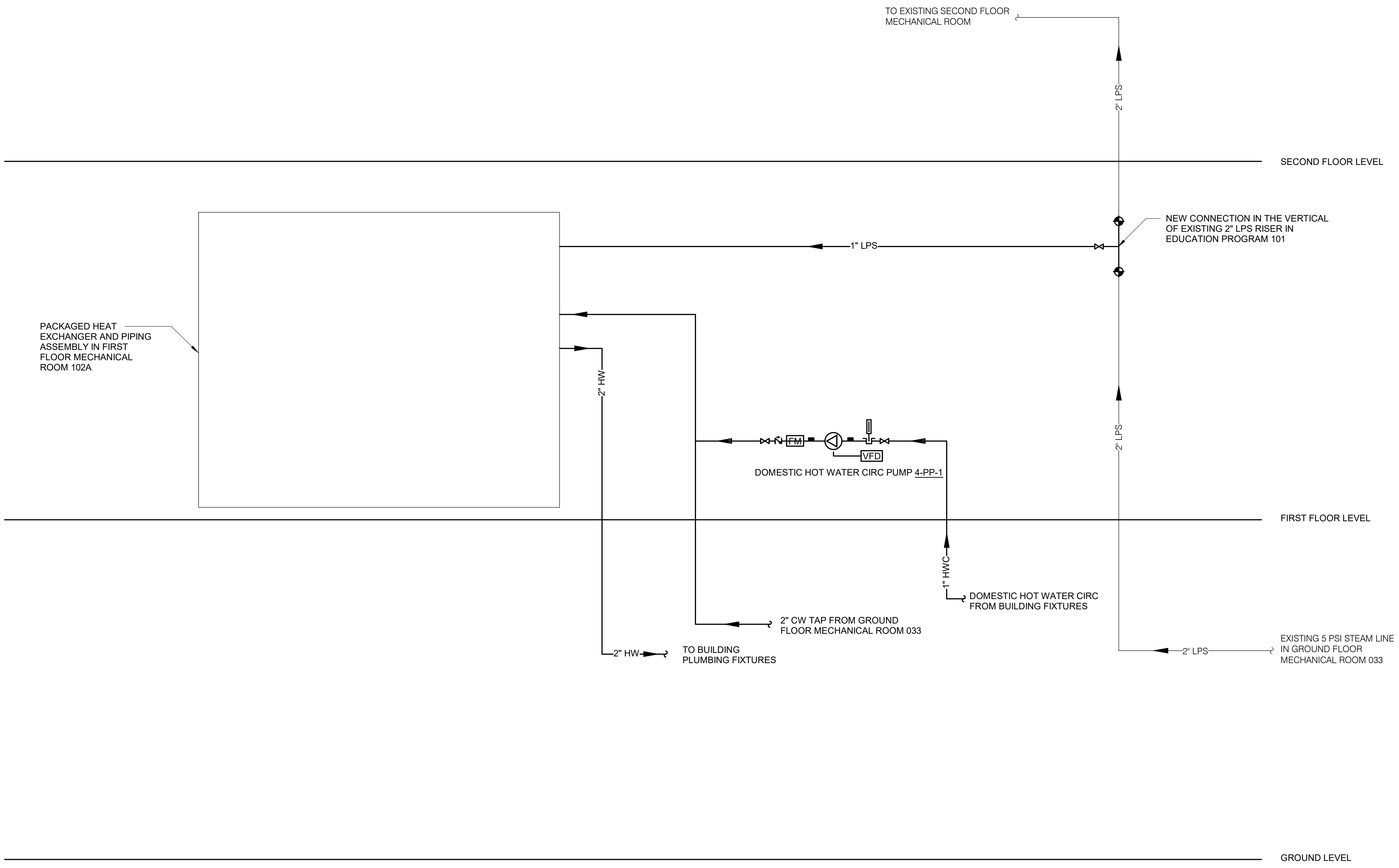
Project Title
Renovate and Repair Structural, Building 4
Location
Wichita, KS
Issue Date
9/23/2021
Checked
MATKAH
Drawn
KATDEN

Project Number
589A7-21-108
Building Number
4
Drawing Number
P-301

STEAM/HEATING WATER FLOW DIAGRAM SYMBOL LIST

SYMBOL:	DESCRIPTION:
	STEAM (___ OPERATING PRESSURE)
	DOMESTIC HOT WATER SUPPLY
	DOMESTIC HOT WATER CIRC
	HIGH PRESSURE CONDENSATE
	LOW PRESSURE CONDENSATE
	PUMPED CONDENSATE
	PITCH PIPE IN DIRECTION
	DIRECTION OF FLOW IN PIPE
	METER
	PRESSURE GAUGE (FURNISHED WITH BALL VALVE)
	THERMOMETER WITH WELL (FILLED TYPE)
	TEMPERATURE SENSOR WITH WELL
	"WYE" - STRAINER W/SHUTOFF VALVE AND HOSE CONNECTION WITH CAP
	FLEXIBLE CONNECTION
	BALANCING VALVE
	AUTOMATIC BALANCING VALVE
	SHUTOFF VALVE NORMALLY OPEN
	TRIPLE DUTY VALVE
	SHUTOFF VALVE NORMALLY CLOSED
	THROTTLING VALVE
	CHECK VALVE
	UNION/FLANGE
	REDUCER - REFERENCE SPECIFICATION FOR CONCENTRIC/ECCENTRIC AND FOT/FOB
	PIPE CAP
	AUTOMATIC AIR VENT
	MANUAL AIR VENT W/ BALL VALVE
	DRAIN WITH HOSE CONNECTION, CAP & BALL VALVE
	SAFETY/RELIEF VALVE
	PRESSURE REDUCING VALVE (LIQUID/GAS)
	PRESSURE/TEMPERATURE TEST PLUG
	CONTROL VALVE (TWO-WAY)
	STEAM TRAP (SEE SCHEDULE)
	AHU AIR HANDLING UNIT
	RV RELIEF VALVE
	VTR VENT TO ROOF

GENERAL NOTES:
 1. MAKE ALL TAPS FOR STEAM DISTRIBUTION PIPING FROM TOP (OR WITHIN 45°) OF PIPE.
 2. PITCH ALL STEAM AND CONDENSATE LINES 1" PER 40'-0" MINIMUM IN THE DIRECTION OF FLOW.
 3. REFER TO MECHANICAL PIPING FLOOR PLANS FOR STEAM AND CONDENSATE PIPE ROUTING.

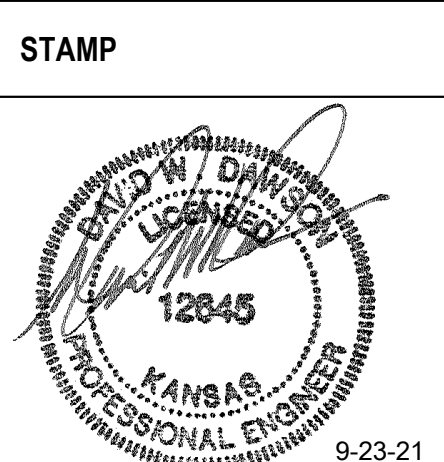


2 STEAM & DOMESTIC HOT WATER FLOW DIAGRAM
 NO SCALE

Revisions:	Date:

CONSULTANT
 Engineering:
 IMEG Corp.
 15 Sunnen Drive, Suite 104
 St. Louis, MO 63143
 (314) 645-1132

ARCHITECT/ENGINEER OF RECORD
 A/E:
 Calvin L. Hinz Architects P.C.
 3705 N. 200th Street
 Elkhorn, NE 68022
 (402) 291-6941



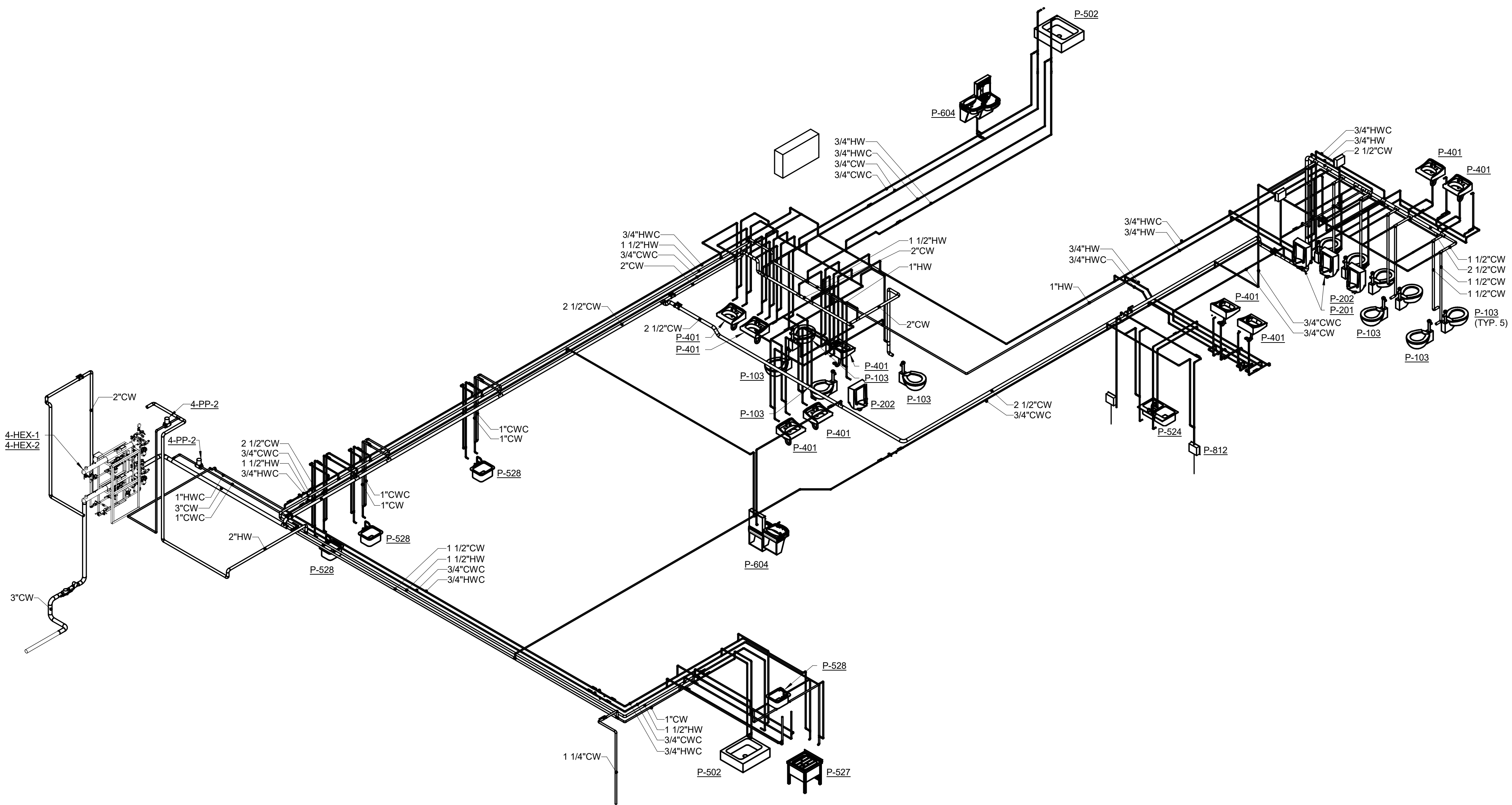
Office of
 Construction
 and Facilities
 Management
 VA U.S. Department
 of Veterans
 Affairs

Drawing Title
PLUMBING DIAGRAMS
 Approved:

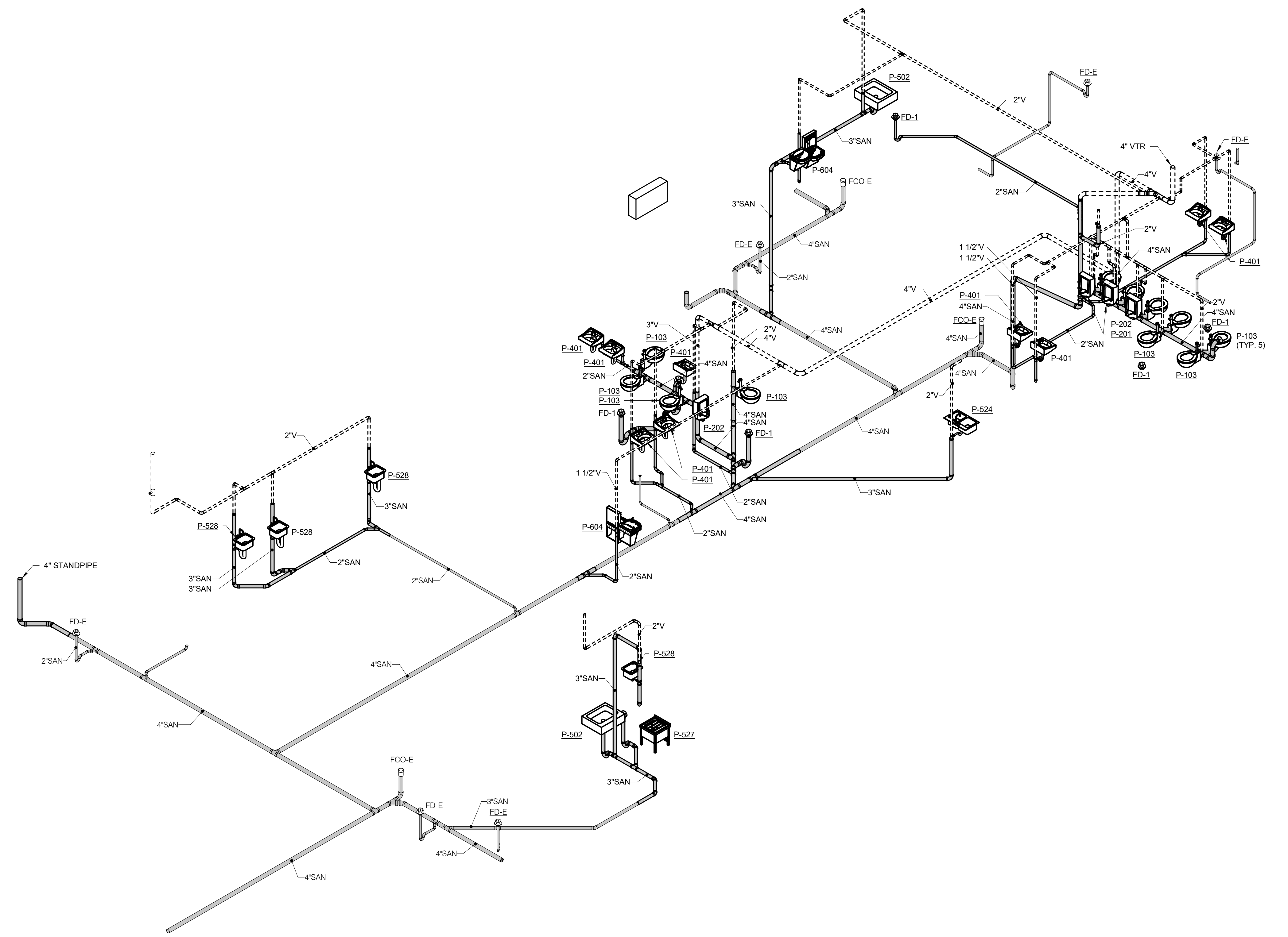
Phase
BID DOCUMENTS
FULLY SPRINKLERED

Project Title
 Renovate and Repair Structural,
 Building 4
 Location
 Wichita, KS
 Issue Date
 9/23/2021
 Checked
 MATKAH
 Drawn
 KATDEN

Project Number
 589A7-21-108
 Building Number
 4
 Drawing Number
P-401



1 DOMESTIC PLUMBING RISER
NO SCALE

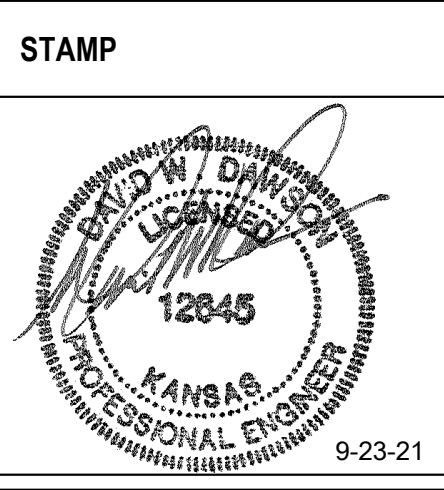


2 SAN/VENT PLUMBING RISER
NO SCALE

Revisions:	Date:

CONSULTANT
Engineering:
 IMEG Corp.
 15 Sunnen Drive, Suite 104
 St. Louis, MO 63143
 (314) 645-1132

ARCHITECT/ENGINEER OF RECORD
A/E:
 Calvin L. Hinz Architects P.C.
 3705 N. 200th Street
 Elkhorn, NE 68022
 (402) 291-6941



Office of Construction and Facilities Management
 U.S. Department of Veterans Affairs

Drawing Title
 PLUMBING ISOMETRIC DIAGRAMS
Approved:

Phase
 BID DOCUMENTS
 FULLY SPRINKLERED

Project Title
 Renovate and Repair Structural, Building 4
Location
 Wichita, KS
Issue Date
 9/23/2021
Checked
 MATKAH
Drawn
 KATDEN

Project Number
 589A7-21-108
Building Number
 4
Drawing Number
 P-402

PLUMBING PUMP SCHEDULE																			
MARK	LOCATION	AREA AND/OR BLDG SERVED	SYSTEM AND/OR SERVICE	TYPE	CIRCULATING FLUID								ELECTRICAL MOTOR					REMARKS	
					FLUID	FLOW GPM [L/s]	HEAD FT [kPa]	NPSH AVAILABLE FT [kPa]	TEMPERATURE °F [°C]	SP. GR.	MIN. % EFF.	NOMINAL POWER HP [kW]	PHASE	VOLT	MAX RPM	SPEED CONTROL			
4-PP1	MECHANICAL 102A	BUILDING 4	HOT WATER RECIR.	CENT	DOMESTIC WATER	3	[]	30 [480]	NA	NA	140 [60]	1	50	0.17 []	1	115	1750	CONSTANT	---
4-PP2	MECHANICAL 033	BUILDING 4	COLD WATER RECIR.	CENT	DOMESTIC WATER	3	[]	35 [560]	NA	NA	65 [18]	1	50	0.17 []	1	115	1750	CONSTANT	---

PLUMBING FIXTURE SCHEDULE														
MARK	DESCRIPTION	WASTE PIPE		VENT PIPE		COLD WATER		HOT WATER		WASTE FIXTURE UNITS	WATER FIXTURE UNITS	WRIST BLADE HANDLES	ELECTRIC SENSOR	REMARKS
		IN	[mm]	IN	[mm]	IN	[mm]	IN	[mm]					
P-103	WATER CLOSET, WALL HUNG	3	[75]	2	[50]	1.25	[31]			6	10	N/A	NO	WALL HUNG WITH MANUAL FLUSH VALVE
P-201	URINAL WALL HUNG	2	[50]	1.5	[38]	.75	[19]			2	5	N/A	NO	WALL HUNG WITH MANUAL FLUSH VALVE
P-202	URINAL WALL HUNG	2	[50]	1.5	[38]	.75	[19]			2	5	N/A	NO	WALL HUNG WITH MANUAL FLUSH VALVE, ADA
P-401	LAVATORY	2	[50]	1.5	[38]	.5	[13]	.5	[13]	2	2	N/A	NO	
P-502	SINK SERVICE FLOOR MOUNTED	3	[75]	2	[50]	.75	[19]	.75	[19]	3	4	N/A	NO	
P-524	SINK COUNTER MOUNTED DOUBLE	3	[75]	2	[50]	.75	[19]	.75	[19]	3	4	N/A	NO	
P-527	SINK SERVICE	3	[75]	2	[50]	1	[25]	.75	[19]	3	4	N/A	NO	PROVIDE WITH GOOSENECK RETRACTABLE FAUCET
P-528	SINK COUNTER MOUNTED SINGLE	3	[75]	2	[50]	1	[25]	.75	[19]	3	4	N/A	NO	
P-604	ELECTRIC WATER COOLER	2	[50]	1.5	[38]	.5	[13]			1	1	N/A	NO	DUAL HEIGHT WITH BOTTLE FILLER.
P-709	EMERGENCY EYE AND FACE WASH					1.25	[31]				10	N/A	NO	
P-812	WALL BOX					.5	[13]				3	N/A	NO	COORDINATE INSTALLATION LOCATION WITH ARCHITECT
BFP-1A	BACKFLOW PREVENTER					3	[75]					N/A	NO	REDUCED PRESSURE ZONE, LEAD FREE BRONZE CONSTRUCTION, SIZE SAME AS PIPE, NON-CORROSIVE INTERNAL PARTS, STAINLESS STEEL SPRINGS, DIFFERENTIAL PRESSURE RELIEF VALVE BETWEEN SPRING-LOADED CHECK VALVES, BALL STYLE SHUT-OFF VALVES ON INLET AND OUTLET OF UNIT, AIR GAP DRAIN FITTING TEST PORTS WITH SHUT-OFF VALVES, RATED FOR 175 PSI AT 33°F TO 140°F, 15 PSI (MAXIMUM) PRESSURE DROP AT 10 FPS, FACTORY TESTED, ALL PARTS TO BE SERVICEABLE WITHOUT REMOVING UNIT FROM LINE, APPROVED BY USC FCCC & HR, AWWA C511-92, ASSE 1013, IAPMO AND SBCCI LISTED. MOUNT WITHIN 60" OF FINISHED FLOOR. ROUTE DRAIN PIPE FROM AIR GAP FITTING TO FLOOR DRAIN. PROVIDE AND INSTALL BRONZE OR EPOXY COATED STRAINER UPSTREAM OF EACH UNIT AND ADDITIONAL VALVE UPSTREAM OF EACH STRAINER. FLOW PRESSURE DROP CURVES SHALL BE SUBMITTED.
BFP-1B	BACKFLOW PREVENTER					3	[75]					N/A	NO	REDUCED PRESSURE ZONE, LEAD FREE BRONZE CONSTRUCTION, SIZE SAME AS PIPE, NON-CORROSIVE INTERNAL PARTS, STAINLESS STEEL SPRINGS, DIFFERENTIAL PRESSURE RELIEF VALVE BETWEEN SPRING-LOADED CHECK VALVES, BALL STYLE SHUT-OFF VALVES ON INLET AND OUTLET OF UNIT, AIR GAP DRAIN FITTING TEST PORTS WITH SHUT-OFF VALVES, RATED FOR 175 PSI AT 33°F TO 140°F, 15 PSI (MAXIMUM) PRESSURE DROP AT 10 FPS, FACTORY TESTED, ALL PARTS TO BE SERVICEABLE WITHOUT REMOVING UNIT FROM LINE, APPROVED BY USC FCCC & HR, AWWA C511-92, ASSE 1013, IAPMO AND SBCCI LISTED. MOUNT WITHIN 60" OF FINISHED FLOOR. ROUTE DRAIN PIPE FROM AIR GAP FITTING TO FLOOR DRAIN. PROVIDE AND INSTALL BRONZE OR EPOXY COATED STRAINER UPSTREAM OF EACH UNIT AND ADDITIONAL VALVE UPSTREAM OF EACH STRAINER. FLOW PRESSURE DROP CURVES SHALL BE SUBMITTED.
BFP-2	BACKFLOW PREVENTER											N/A	NO	DUAL CHECK, LEAD FREE STAINLESS STEEL BODY, HEAVY DUTY FDA APPROVED RUBBER DIAPHRAGMS, 3/8" SIZE, RATED FOR 150 PSI AT 33°F TO 110°F, APPROVED BY ASSE 1032.
FD-1	FLOOR DRAIN	2	[50]	1.5	[38]					3	0	N/A	NO	
WHA-1	WATER HAMMER ARRESTOR											N/A	NO	PISTON TYPE, PRE-CHARGED WITH 60 PSIG AIR, LEAD FREE, COPPER BODY, BRASS OR HIGH HEAT POLY-PROPYLENE PISTON WITH DUAL EPDM O-RING SEALS LUBRICATED WITH FDA APPROVED SILICONE LUBRICANT, PDI CERTIFIED, A.S.S.E. 1010 APPROVED FOR SEALED WALL INSTALLATION, INSTALL PER MANUFACTURER'S RECOMMENDATIONS.

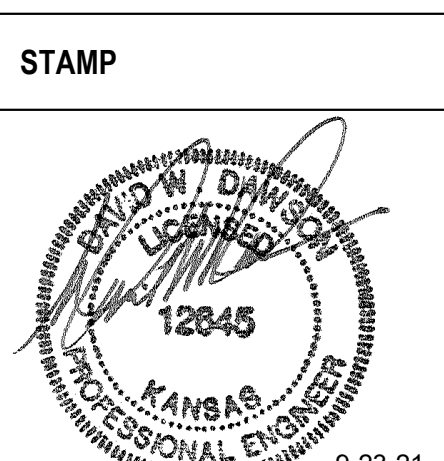
GENERAL NOTES
1. SANITARY RISER UP IN WALL TO FIXTURES SHALL BE A MINIMUM OF 2".
2. 1/2" CW AND HW APPLIES ONLY TO THE FINAL VERTICAL RISE-DROP TO EACH FIXTURE. BRANCH PIPING TO VERTICAL RISE-DROP SHALL BE A MINIMUM OF 3/4" UNLESS NOTED OTHERWISE.
3. SIZES SHOWN ARE MINIMUMS. SIZES SHOWN ON THE DRAWING THAT ARE LARGER THAN THE SIZES LISTED IN THE SCHEDULE SHALL DICTATE THE ROUGH-IN SIZE.

STEAM TO WATER HEAT EXCHANGER SCHEDULE																						
MARK	LOCATION	AREA AND/OR BLDG SERVED	SYSTEM AND/OR SERVICE	TYPE	WATER CONDITIONS						STEAM PRESSURE				CONTROL VALVE		TRAP		REMARKS			
					FLOW		EWT		LWT		WPD		ENT CONTROL VALVE		ENT HEAT EXCHANGER		TRAP NO	CAPACITY				
					GPM	[L/s]	°F	[°C]	°F	[°C]	FT	[kPa]	PSIG	[kPa]	PSIG	[kPa]		LB/HR		[KG/HR]	[LB/HR]	[KG/HR]
4-HEX-1	MECHANICAL 102A	BUILDING 4	DOMESTIC HOT WATER	DOUBLE WALL SHELL & TUBE	10	[1]	60	[16]	140	[60]	5	[15]	5	[35]	5	[35]	805	[370]	1-TP1	10999	[5000]	PRE-PIPED ASSEMBLY INCLUDING 4-HEX-2, FULLY REDUNDANT, PROVIDE WITH INTEGRAL CONTROLLER WITH BAS CONNECTIVITY.
4-HEX-2	MECHANICAL 102A	BUILDING 4	DOMESTIC HOT WATER	DOUBLE WALL SHELL & TUBE	10	[1]	60	[16]	140	[60]	5	[15]	5	[35]	5	[35]	805	[370]	1-TP2	11000	[5000]	PRE-PIPED ASSEMBLY INCLUDING 4-HEX-1, FULLY REDUNDANT, PROVIDE WITH INTEGRAL CONTROLLER WITH BAS CONNECTIVITY.

Revisions:	Date:

CONSULTANT
Engineering:
IMEG Corp.
15 Sunnen Drive, Suite 104
St. Louis, MO 63143
(314) 645-1132

ARCHITECT/ENGINEER OF RECORD
A/E:
Calvin L. Hinz Architects P.C.
3705 N. 200th Street
Elkhorn, NE 68022
(402) 291-6941



Office of Construction and Facilities Management
VA U.S. Department of Veterans Affairs

Drawing Title
PLUMBING SCHEDULES
Approved:

Phase
BID DOCUMENTS
FULLY SPRINKLERED

Project Title
Renovate and Repair Structural, Building 4
Location
Wichita, KS
Issue Date
9/23/2021
Checked
MATKAH
Drawn
KATDEN

Project Number
589A7-21-108
Building Number
4
Drawing Number
P-501